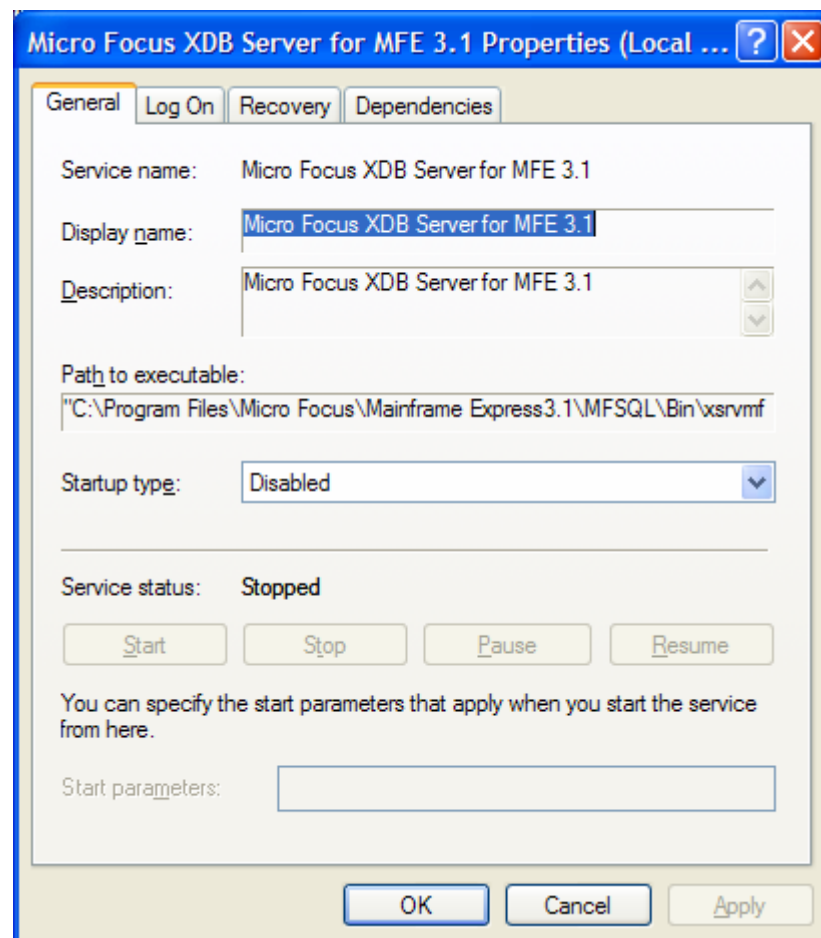


Suppression of the “1058” message when using the XDB “Blue Screen” Server

NOTE :-This article assumes that the Mainframe Express installation is not a Citrix or Terminal Server installation.

To use the XDB “Blue Screen” Server, the XDB Service must first be disabled.
To do this, follow these instructions:

1. Close any Mainframe Express windows.
2. Stop the XDB Server.
3. From the Control Panel, go to Administrative tools and then Services.
4. Highlight the service “Micro Focus XDB Server for MFE 3.1” and right click
From the context menu, choose properties.
5. Amend the properties as shown below....



With the XDB Service disabled, when XDB is used in any Mainframe Express project, the following message is displayed, and can be quite irritating.

```
XDB SERVER SERVICE - "Micro Focus XDB Server for MFE 3.1"  
Error 1058: The service cannot be started, either because it is disabled or because it has no  
enabled devices associated with it  
Would you like to start the blue-screen XDB server
```

Normally this is acceptable and by replying to this display, the XDB "Blue Screen" Server will be started.

However, it is possible to avoid this message and start the XDB "Blue Screen" Server directly.

To do this, update the registry as follows...

1. Navigate to
My Computer\HKEY_LOCAL_MACHINE\SOFTWARE\Micro
Focus\COBOL\6.0\XDB\3.0\XDB Server
2. Add a new entry....

UseBlueScreen (REG_DWORD with value set to 1 to activate)
3. Re-open Mainframe Express and open your project

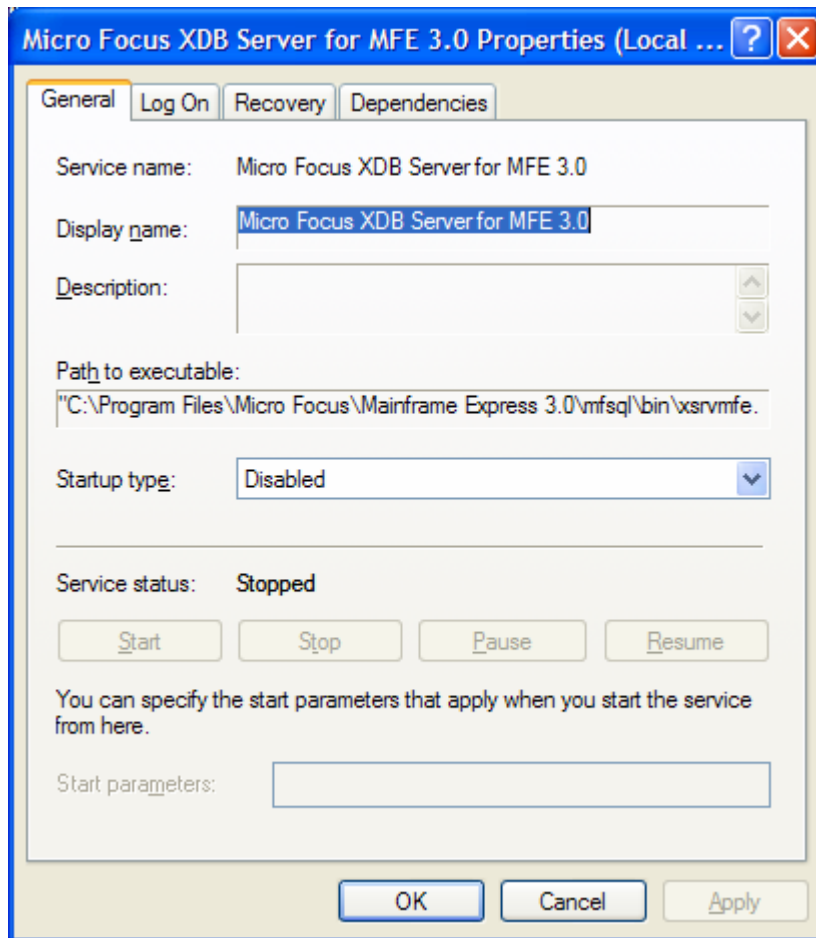
The blue screen server will now automatically start without the error message prompt...

Mainframe Express 3.0

Close any Mainframe Express windows.
Stop the XDB Server.

From the Control Panel, go to Administrative tools and then Services.
Highlight the service Micro Focus XDB Server for MFE 3.0 and right click
From the context menu, choose properties.

Amend the properties as shown below....



Now update the registry as follows...

My Computer\HKEY_LOCAL_MACHINE\SOFTWARE\Micro Focus\Mainframe Express\3.0\XDB\3.0\XDB Server

Add a new entry....

UseBlueScreen (REG_DWORD with value set to 1 to activate)

Re-open Mainframe Express and open your project.

The blue screen server will now automatically start without the error message prompt...

XDB SERVER SERVICE - "Micro Focus XDB Server for MFE 3.0"

Error 1058: The service cannot be started, either because it is disabled or because it has no enabled devices associated with it

Would you like to start the blue-screen XDB server

Possible useful items & notes:

Take care with abbreviations. If you wish to use them state the full name of the item the first time it appears in the article followed by the abbreviation in brackets.

For example: Mainframe Express (MFE). The abbreviation MFE can then be used in the rest of the article.

Take care with links to the SupportLine Web Service. Customers need to have current maintenance to access certain facilities. If unsure provide details of the link you would like when submitting your article to the editor who can then make the final decision on what should be used.

Some useful basic links are:

To the SupportLine Web Login Page: [SupportLine Web Service](#)

To the contact us page: Contact your local [Customer Care](#) centre.

Or Contact your local [Sales Representative](#).

In need of inspiration? Check out previous articles in the [Customer Care In Focus archive](#).

If the article is based upon an existing KB please use the following text at the bottom to show the KB number:

NOTE: *this is based on Knowledge Base article reference: 12345*