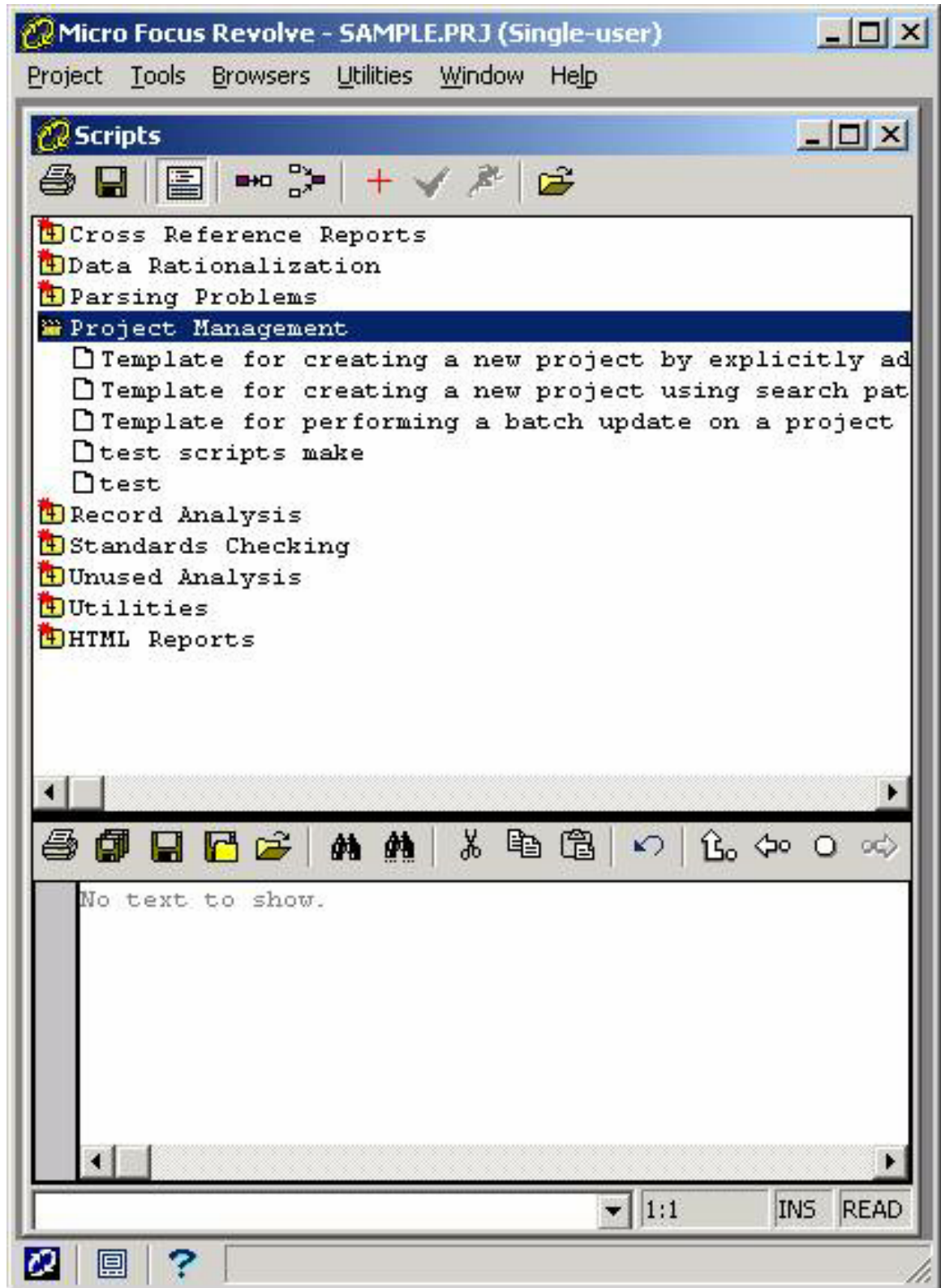


Creating your own BASIC REQL scripts within REVOLVE

To create, compile and run a new script from within Project Management, follow the example included below.

- Go to Tools / Scripts / Project Management
- Split the Screen View

Creating your own BASIC REQL scripts within REVOLVE



- Press the Red + to add an item in this folder

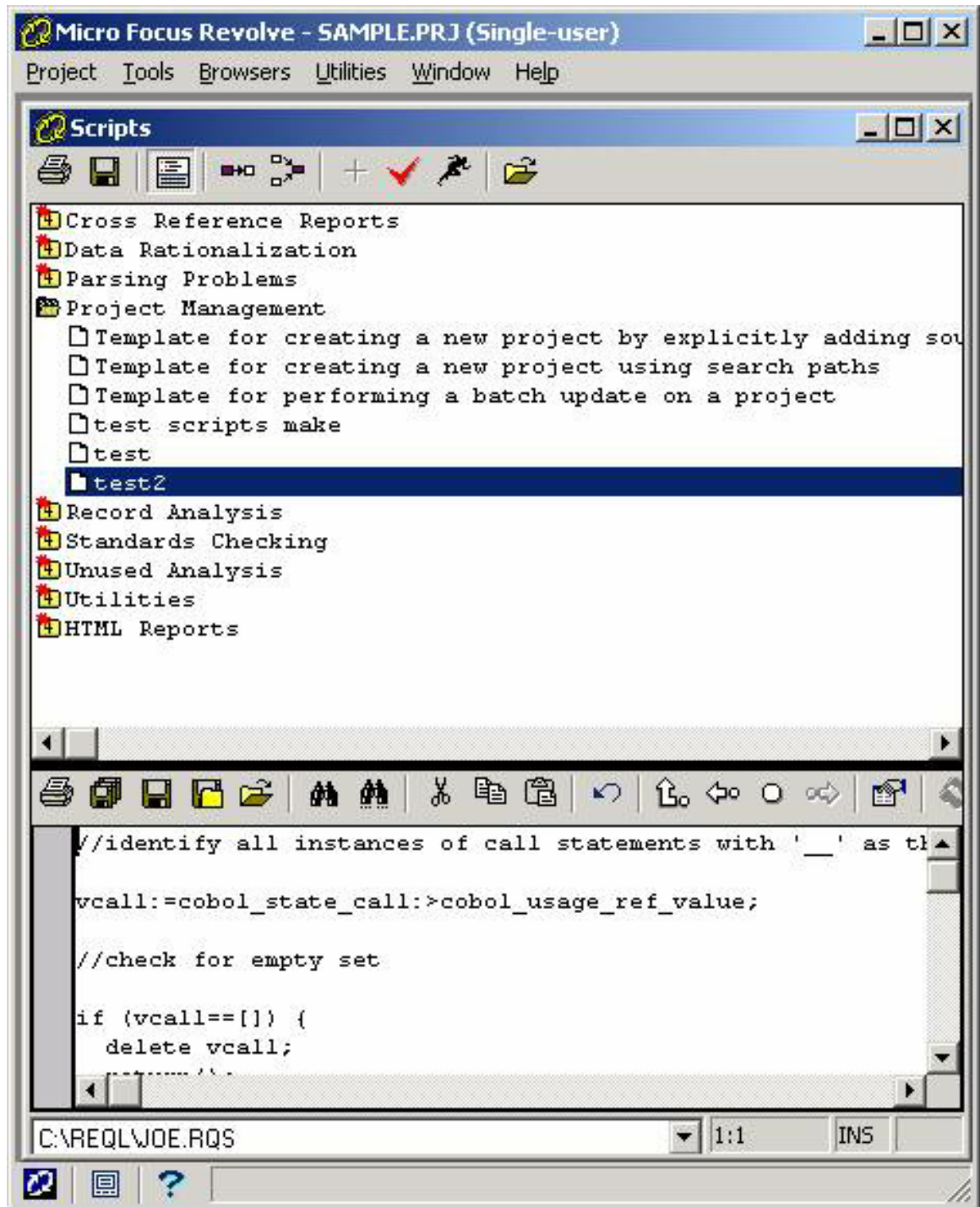
Creating your own BASIC REQL scripts within REVOLVE



** This will add a script to TPS\Script\ProjMan\ folder in the structure of rqs00000.rqs, where the 00000 is increased by 1 every time you create a new script. Currently mine will be rqs00003.rqs.

- Load from file the script you want to add ("Open Folder" icon in "View Source Code" screen)

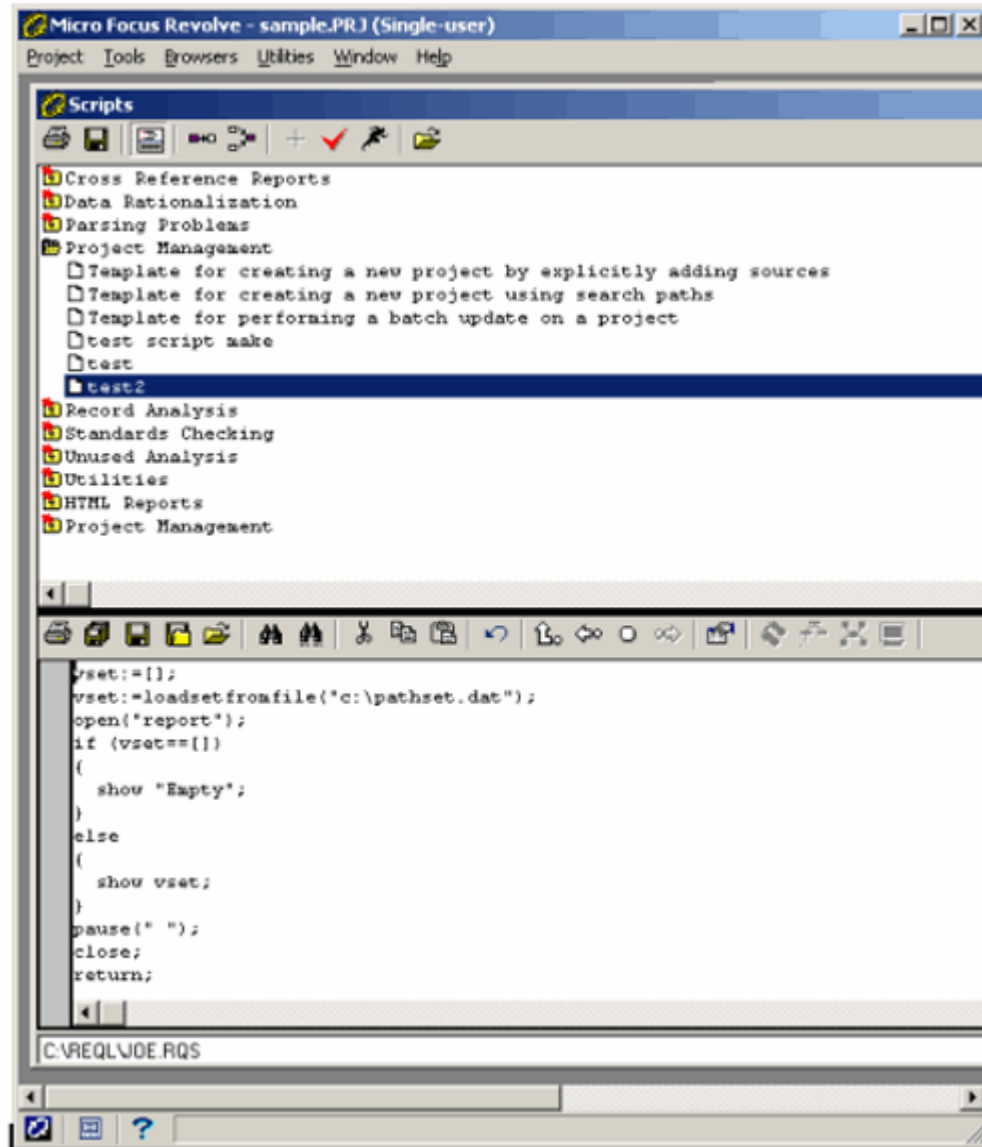
Creating your own BASIC REQL scripts within REVOLVE



**note that the "View Source Code" screen is showing what is in c:\reql\joe.rqs not TPS\Script\ProjMan\rqs00003.rqs

- Save as New File (press the "Disk with Folder" icon):

Creating your own BASIC REQL scripts within REVOLVE



- Compile this script by clicking on the RED CHECK icon from the top tool bar
- Run the script by clicking on the Icon of a RUNNER.

To verify that you have a compile of this script you can go to TPS\Script\ProjMan\ folder and check that there is now an .rqc file along with the .rqc file.

*** Note that there are limitations to the scripts you create and compile in the base Revolve product. To enable you to create and compile more complicated scripts, using relationships or chaining statements, you will require a copy of the Revolve Enterprise Edition. Please contact your sales representative, email Sales.US@microfocus.com or call 1-877-772-4450, to inquire about obtaining a copy of that product.