

## DOS TRANSLATIONS TAB

The DOS Translations tab is useful when the source code for a Revolve project has been moved. In Revolve, the project itself is portable, but Revolve will still expect the source to be at the original location from which it was loaded. For example, if a Revolve project has been built on one workstation where the source files are located on a logical path beginning with S:\, and the source files are moved to a server on P:\, a DOS translation can be created rather than deleting and re-adding the source. The path of the original source file location will still display in the project manager, but Revolve will actually look for the source where the DOS translation tells it to. DOS translations are stored in the RVIO.INI file in the Windows folder, on the C drive by default, for every project created.

Mappings are stored on a project basis.

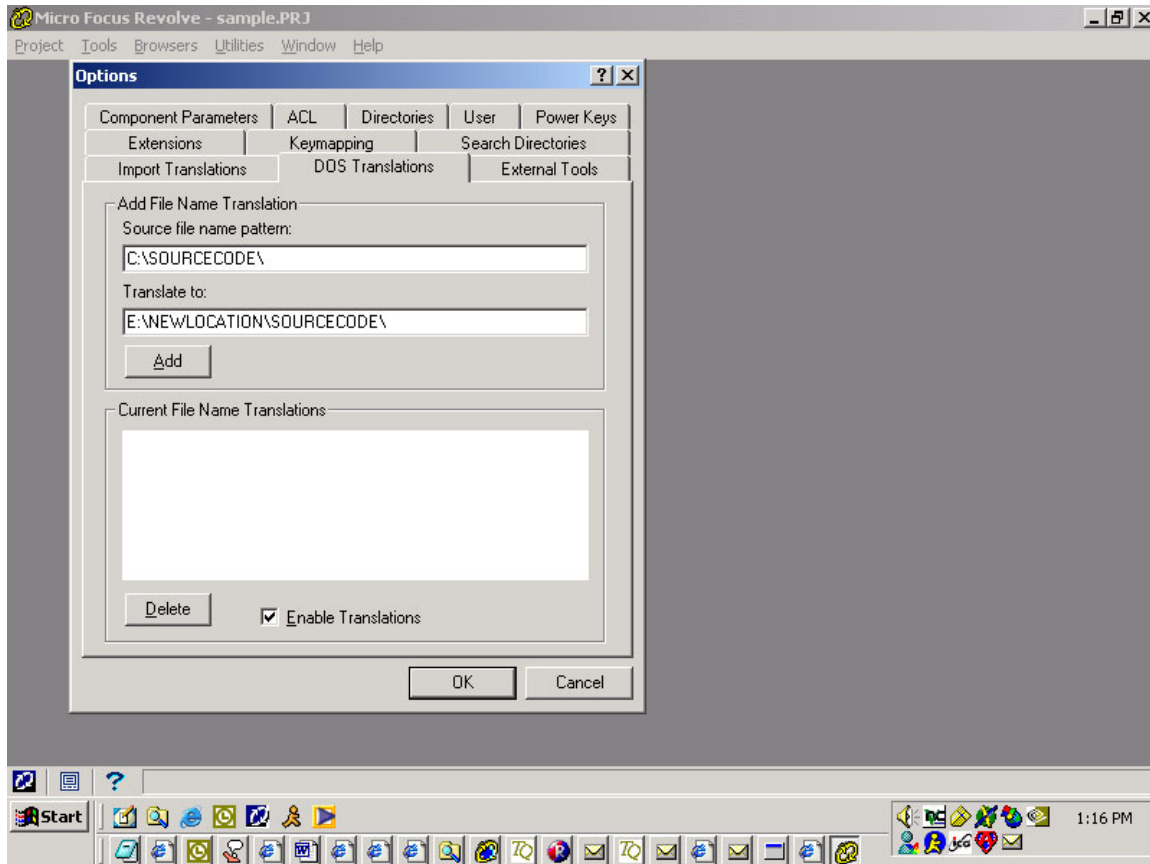
### To set up DOS translations

1. Click Utilities > Options... > DOS Translations tab.
2. Make sure Enable Translations is checked.
3. Specify the name of the file that should be translated in the *Source file name pattern* field.
4. Specify the translated name in the *Translate to* field.
5. Click Add.
6. The translation is displayed in the Current File Name Translations list.

## DOS TRANSLATIONS TAB

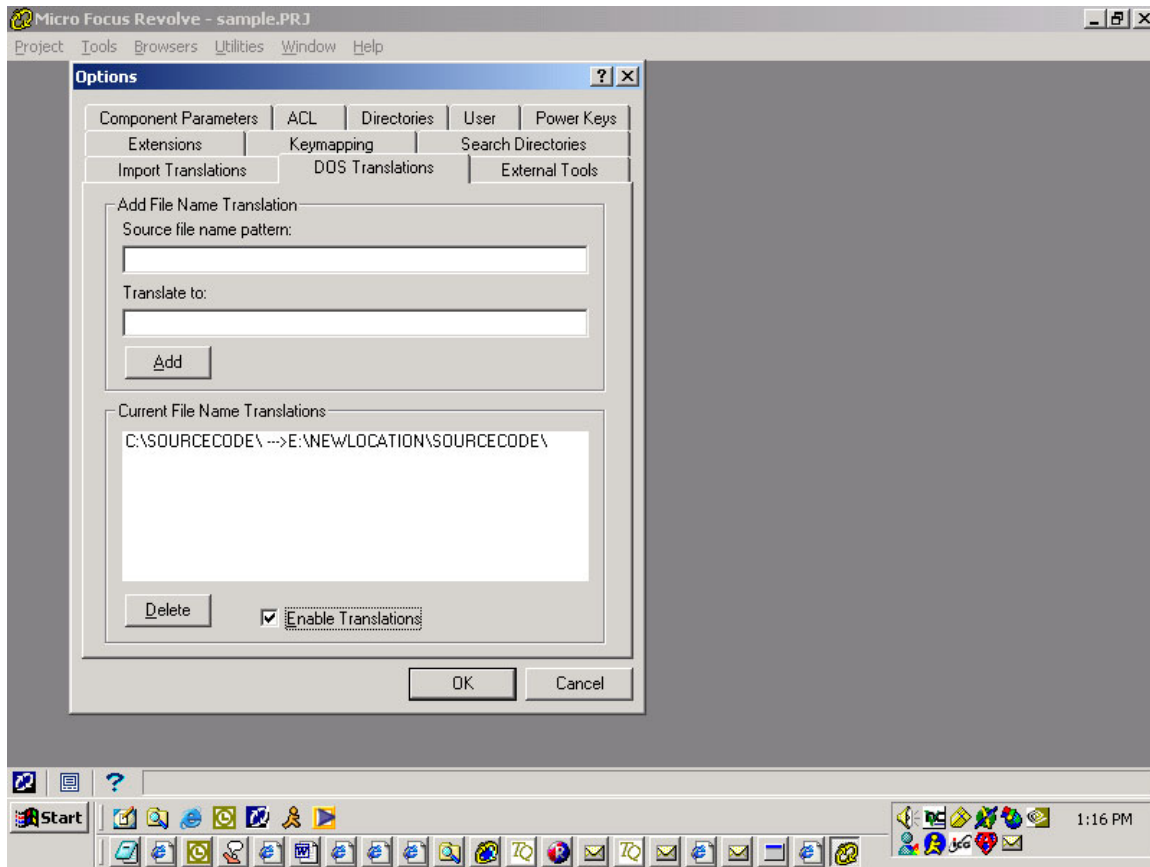
It is important to type the path exactly. If the *Source file name pattern* ends with a backslash (“\”), the *Translate to* should also end with a backslash (“\”).

Example: if source has been loaded from D:\SourceCode\, and now exists on E:\NewLocation\SourceCode\ your translation will look like this:



## DOS TRANSLATIONS TAB

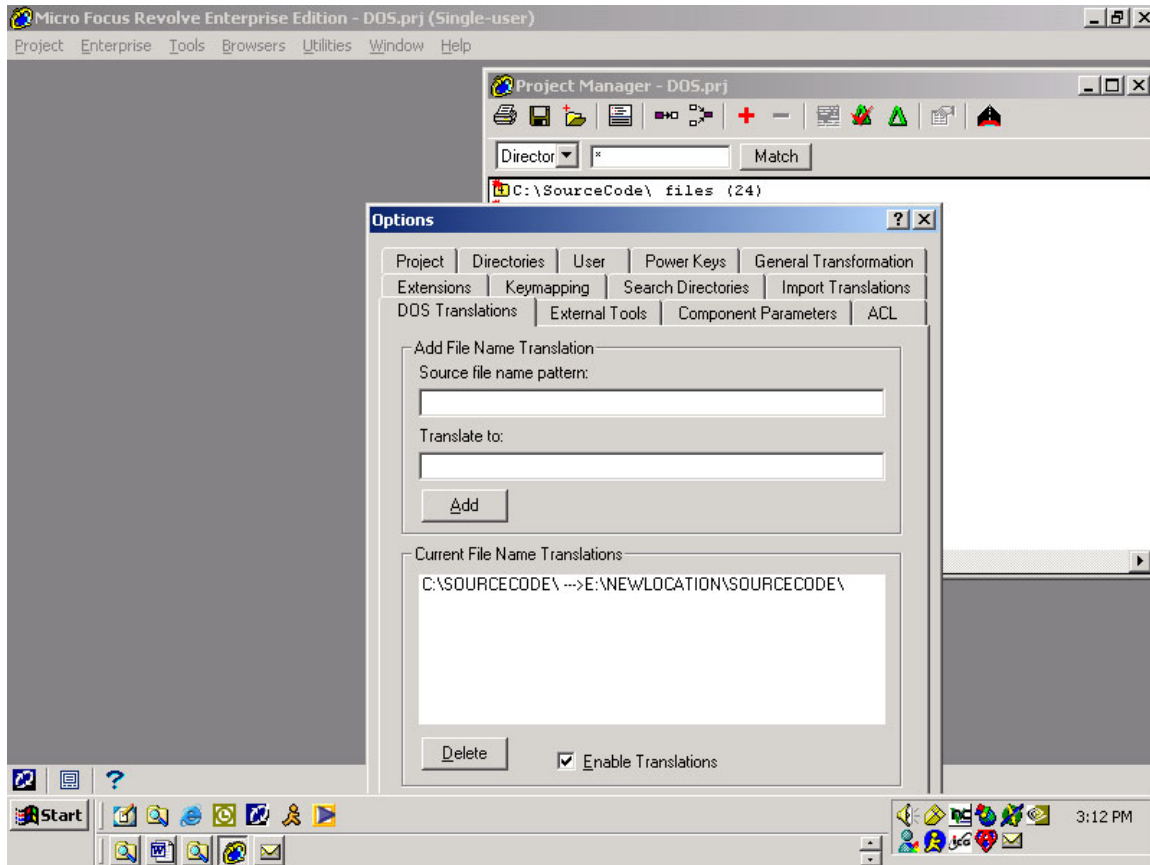
When you click the ADD button, the window will look like this:



It is important to type the path exactly and for your path to have an ending backslash (""). After you click OK, you should be able to see the new source immediately. If you do not, the translation has not been entered correctly. **You do not need to reparse the project for the translations to take effect.**

## DOS TRANSLATIONS TAB

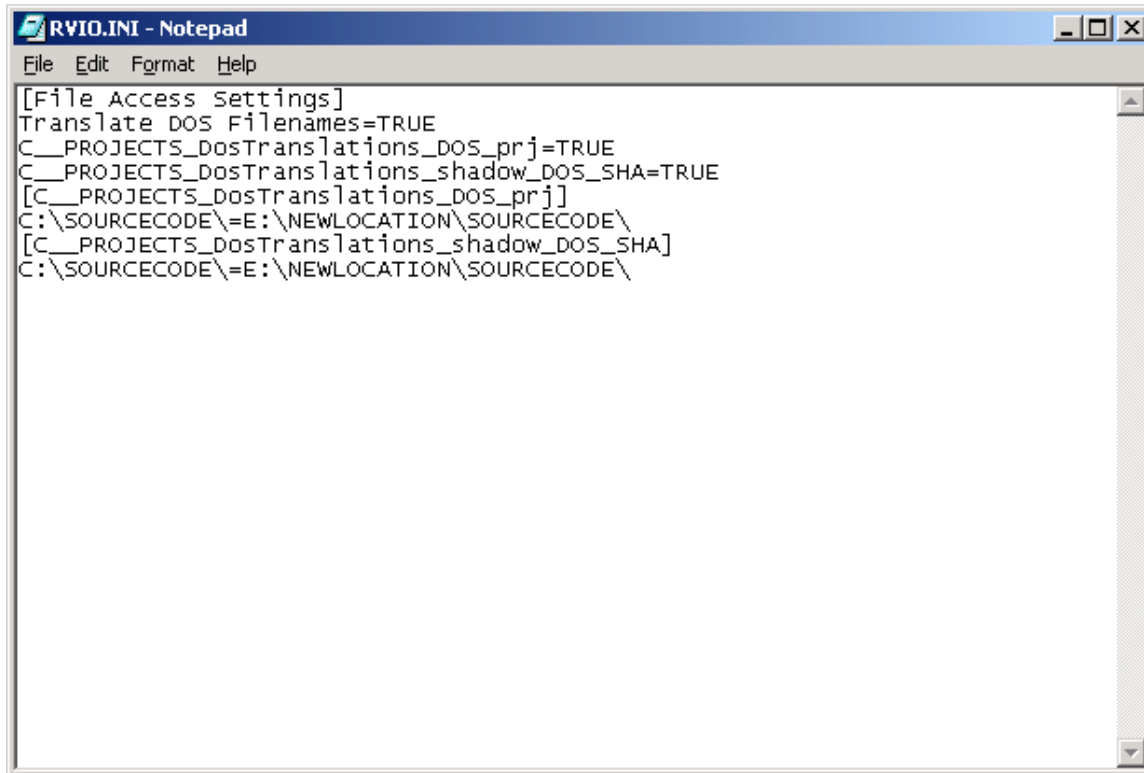
Under the directory tab in Project Manager, it will continue to show the original mapping to the files.



If a project is shared, a DOS translation must be created in the Shadow (.SHA) as well as the user project (.PRJ). This definition is also stored in the RVIO.INI file in the Windows directory.

## DOS TRANSLATIONS TAB

The RVIO.INI file will look like this:



The image shows a Notepad window titled "RVIO.INI - Notepad". The window contains the following text:

```
[File Access Settings]
Translate DOS Filenames=TRUE
C__PROJECTS_DosTranslations_DOS_prj=TRUE
C__PROJECTS_DosTranslations_shadow_DOS_SHA=TRUE
[C__PROJECTS_DosTranslations_DOS_prj]
C:\SOURCECODE\E:\NEWLOCATION\SOURCECODE\
[C__PROJECTS_DosTranslations_shadow_DOS_SHA]
C:\SOURCECODE\E:\NEWLOCATION\SOURCECODE\
```