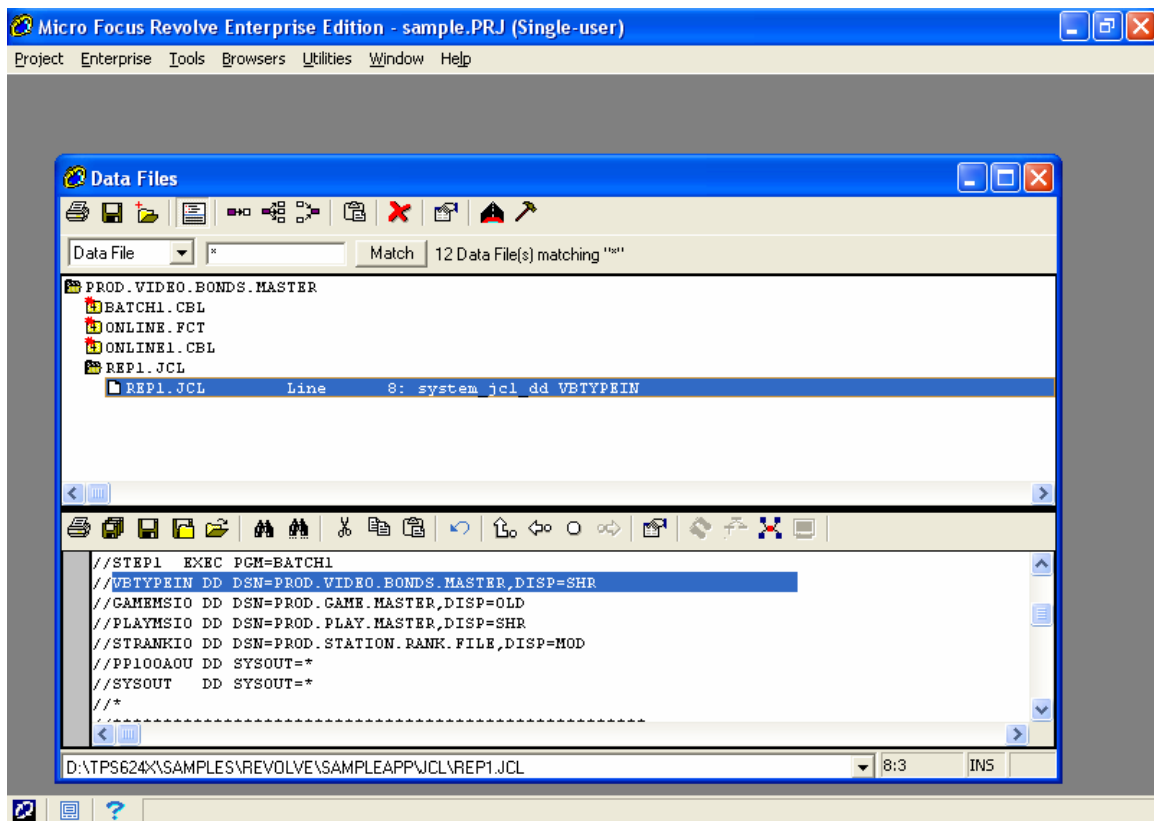


Data Files Browser

Data files themselves are not loaded into Revolve, but information about them is. This information can be found in the Data Files Browser. Data files are defined to Revolve from programs, JCL or CICS tables. You can choose to display by Data File name, or DD name. The display by data file will show all data files from programs, JCL and CICS tables. Displaying by DD name will not display CICS data file information, since these are not associated with a DD name.

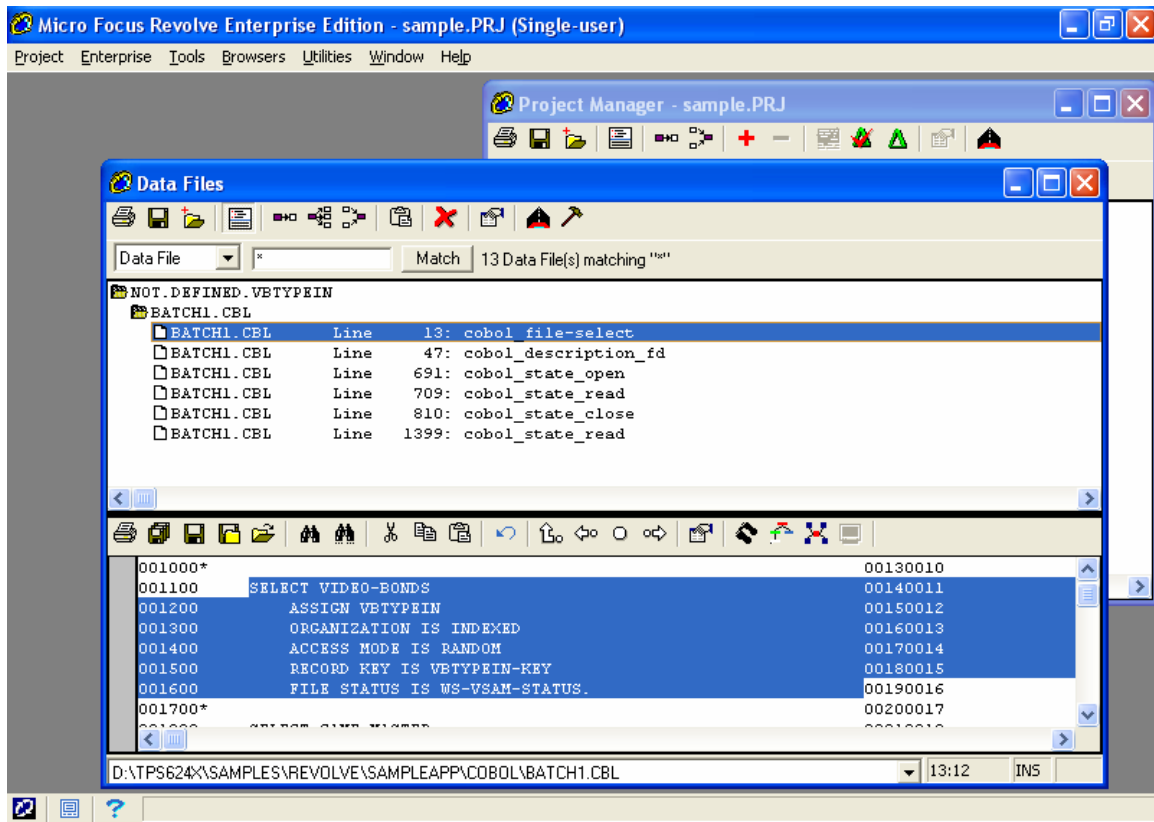
BY DATA FILE

If the data file is being used in batch mode, and the associated JCL is loaded, the data file will display as below, by the actual data file name associated with the DD name; example PROD.VIDEO.BONDS.MASTER associated with VBTYPEIN:



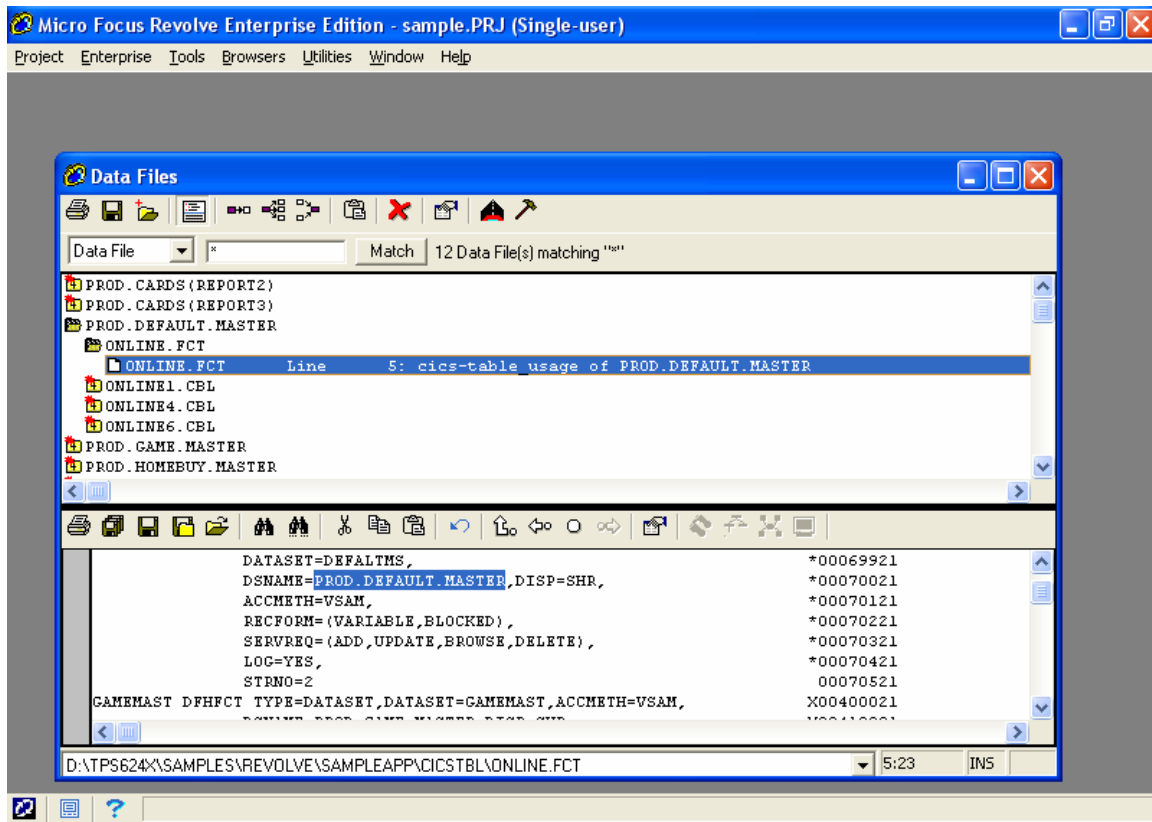
If it is a batch program, and no associated JCL is loaded into the project, the data file will show in this browser as not defined. Revolve will use the label in the assign statement in the select clause as its name; *not.defined.assign-to-name*, as shown below.

Data Files Browser



CICS data files will only be displayed in the browser if they are defined in the CSD report or FCT table since the data files are not defined in the programs.

Data Files Browser



In the Data Files browser, you can select what information is displayed. These options can be set by default for the entire project in Utilities/Browser Options/Data Files, or by individual component or component type in the Project Manager.

Display Options for the data file information can be found in the Options tab. Under Options, there are two tabs; Data Files and Scope.

Options Tab

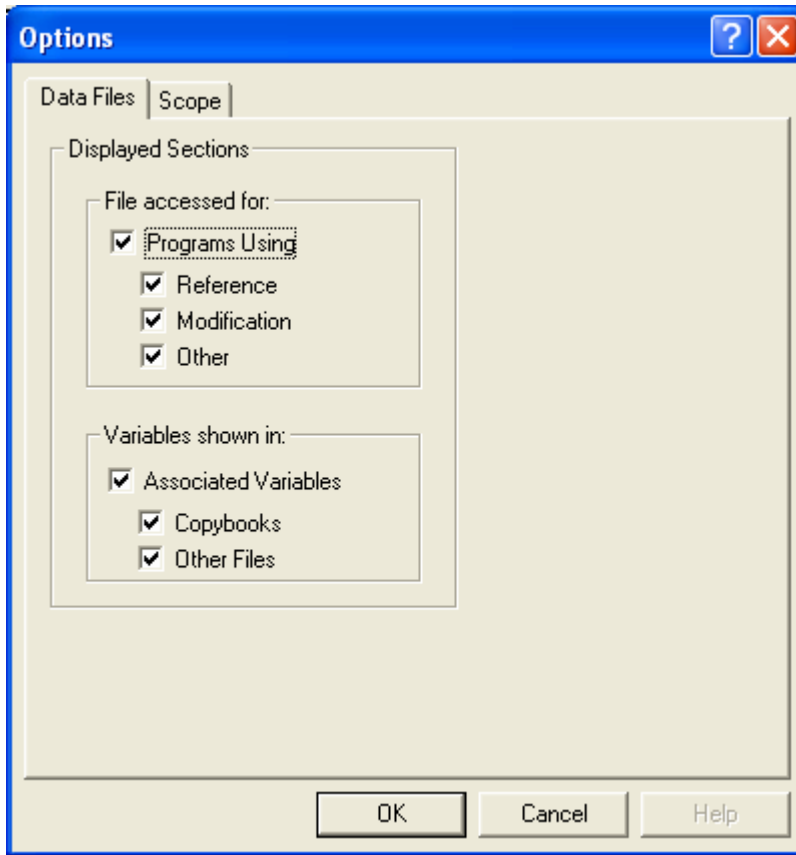
The File accessed for:

- **Programs Using** option enables you to display specific usages of data files in the project.
 - *References* would display statements like Read.
 - *Modifications* would display statements like Write and Rewrite.
 - *Other* would display statements like Select and Open and Close.

Variables shown in:

- *Associated Variables* option allows you to display variables associated with the dataset, such as record layouts, from copybooks or hard coded in the program.
 - Copybooks
 - Other Files

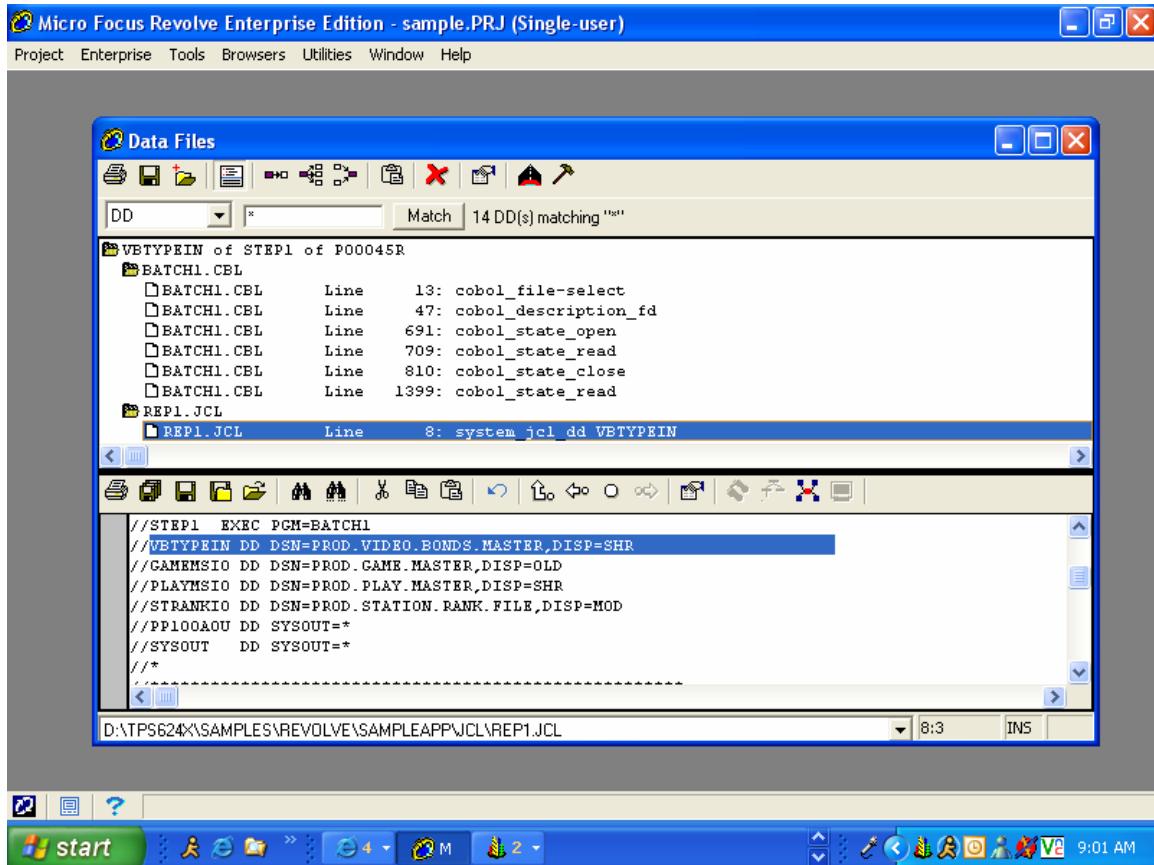
Data Files Browser



Data Files Browser

BY DD NAME

Data files (in Batch mode only) are displayed by their label names within JCL step.



Under the Scope tab, you can select which components are included in your data file analysis.

Data Files Browser

