

# Unused

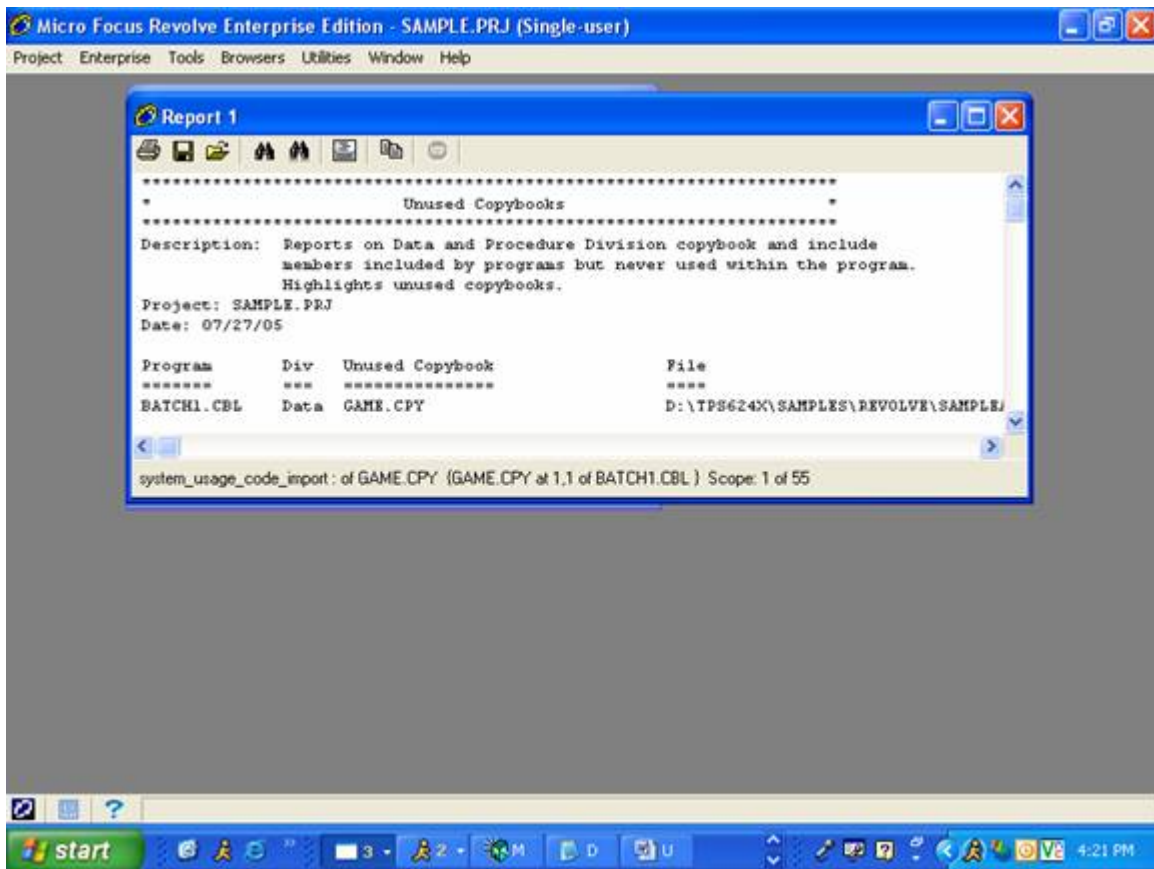
The Scripts tool, found under Tools on the tool bar, enables you to extend your project analysis with the use of provided scripts. There are 9 categories of scripts: Cross Reference Reports; Data Rationalization; Parsing Problems; Project Management; Record Analysis; Standards Checking; Unused Analysis; Utilities and HTML Reports. This is part 7 of a 9 part series.

## UNUSED ANALYSIS

*These scripts report on unused code within the project.*

### Copybooks with no Referenced Variables

*Reports on copybooks included in programs whose variable definitions are not referenced or whose procedural logic is not executed.*

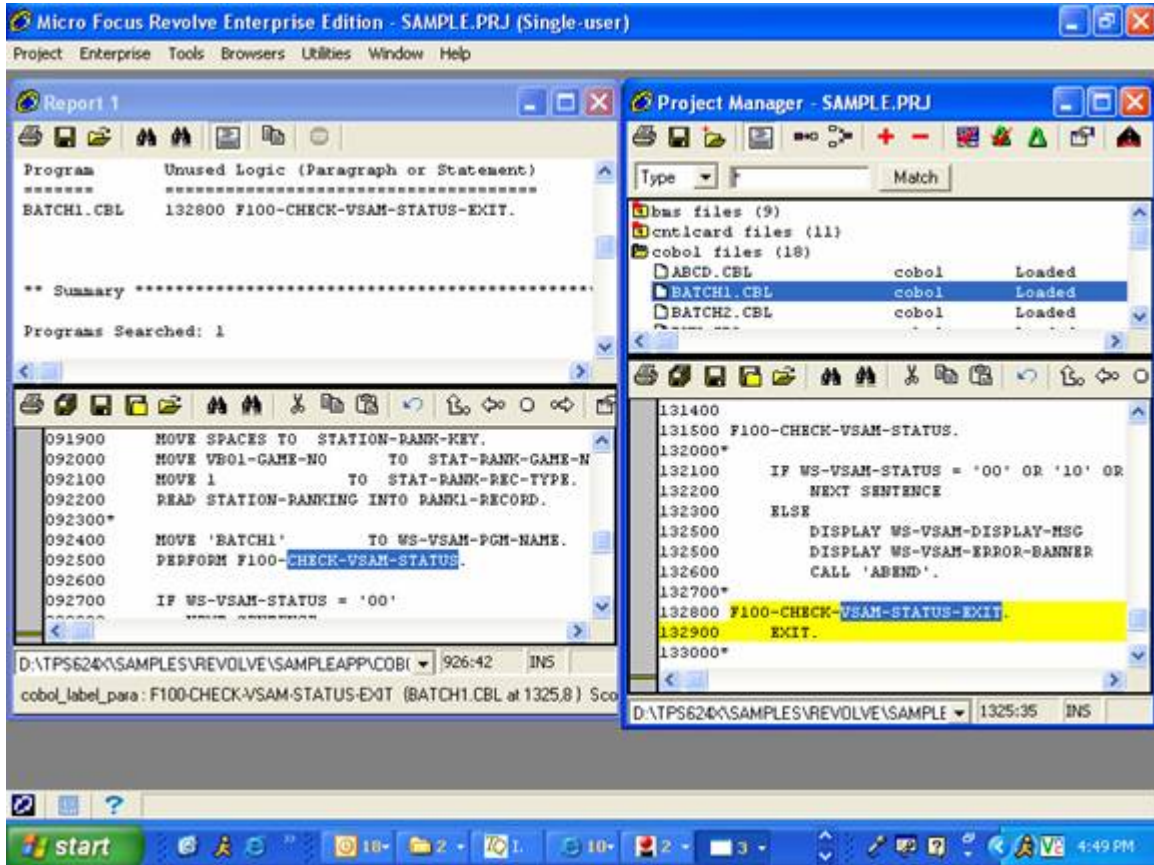


*Unused data division copybooks and unused procedure division copybooks are highlighted in different colors. Copy books in File not Found status are not included in this report.*

# Unused

## Unused Paragraphs

Reports on paragraphs whose statements are not executed.



The paragraph is not performed thru, therefore the exit is never executed.

# Unused

## Unused Procedural Logic

Reports on the unused procedural logic within the selected program.

The screenshot displays the Micro Focus Revolve Enterprise Edition interface. The main window shows a report titled "Unused Procedural Logic" for the project "SAMPLE.PRJ" dated "07/27/05". The report lists several paragraphs of unused logic from the program "BATCH2.CBL".

Program	Unused Logic (Paragraph or Statement)	Location
BATCH2.CBL	094400 PERFORM C250-DETERMINE-STAT THRU	(BATCH2.CBL at 528,12 )
BATCH2.CBL	094800 IF WS-LOOP-COUNT > WS-LOOP-MAX	(BATCH2.CBL at 532,12 )
BATCH2.CBL	095100 PERFORM C240-MAIL-HDR THRU	(BATCH2.CBL at 535,12 )
BATCH2.CBL	087400 C100-CONVERT-SALES-DATE.	(BATCH2.CBL at 540,8 )
BATCH2.CBL	089900 C100-CONVERT-SALES-DATE-EXIT.	(BATCH2.CBL at 547,8 )
BATCH2.CBL	082100 D100-READ-TIME.	(BATCH2.CBL at 574,8 )

Below the report, a detailed view of the program code is shown. The code is color-coded: yellow highlights indicate unused logic, and blue highlights indicate unused paragraphs within unused sections. The code includes paragraphs 094300 through 095300, with various statements like "PERFORM", "IF", "UNTIL", "GO TO", and "EXIT".

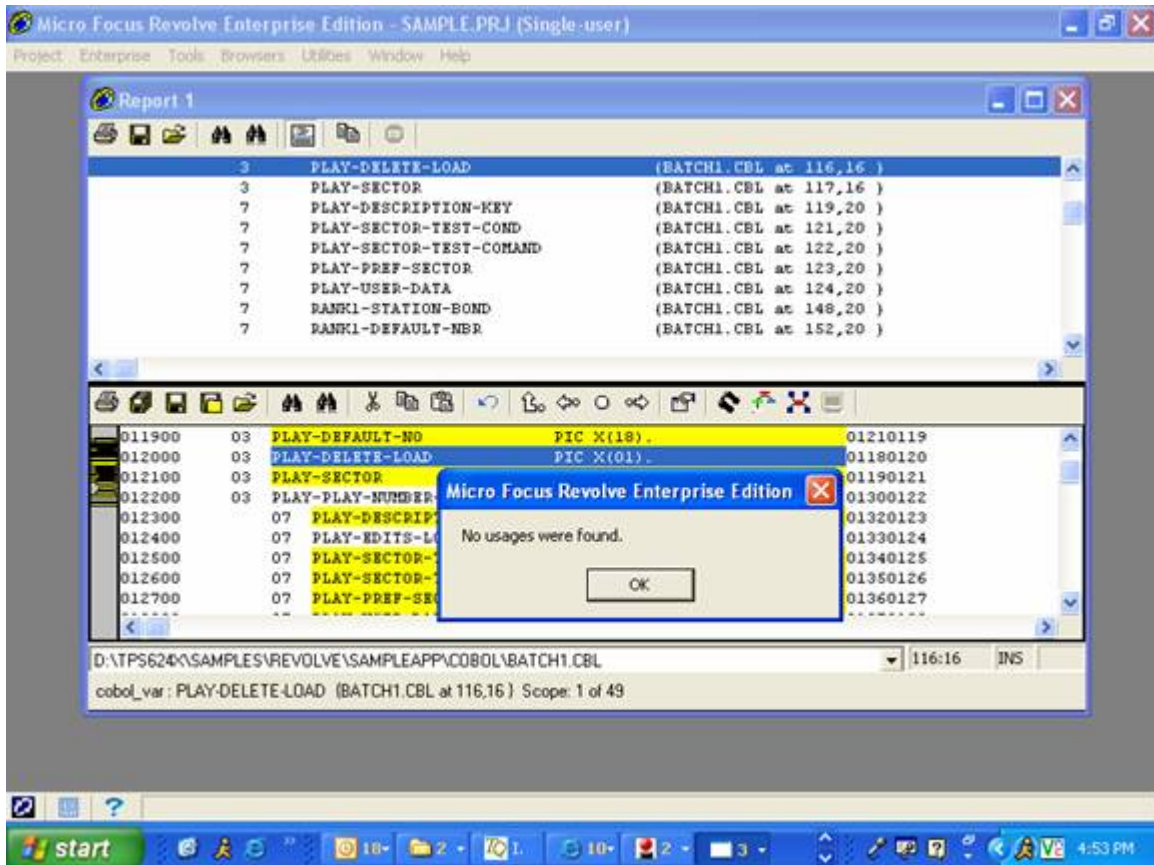
The bottom of the screenshot shows the Windows taskbar with the Start button and system tray icons, indicating the time is 5:07 PM.

Unused logic is highlighted in yellow, unused paragraphs within unused sections are highlighted in blue.

# Unused

## Unused Program Variables

Provides information about variables that are not explicitly used in the loaded project. Please note that some returned fields may not be removed from the project because they are part of redefines, structure definitions, or copybook members that cannot be modified.



Selecting the unused variable and hitting the next usage arrow on the tool bar produces the message No usages were found.