



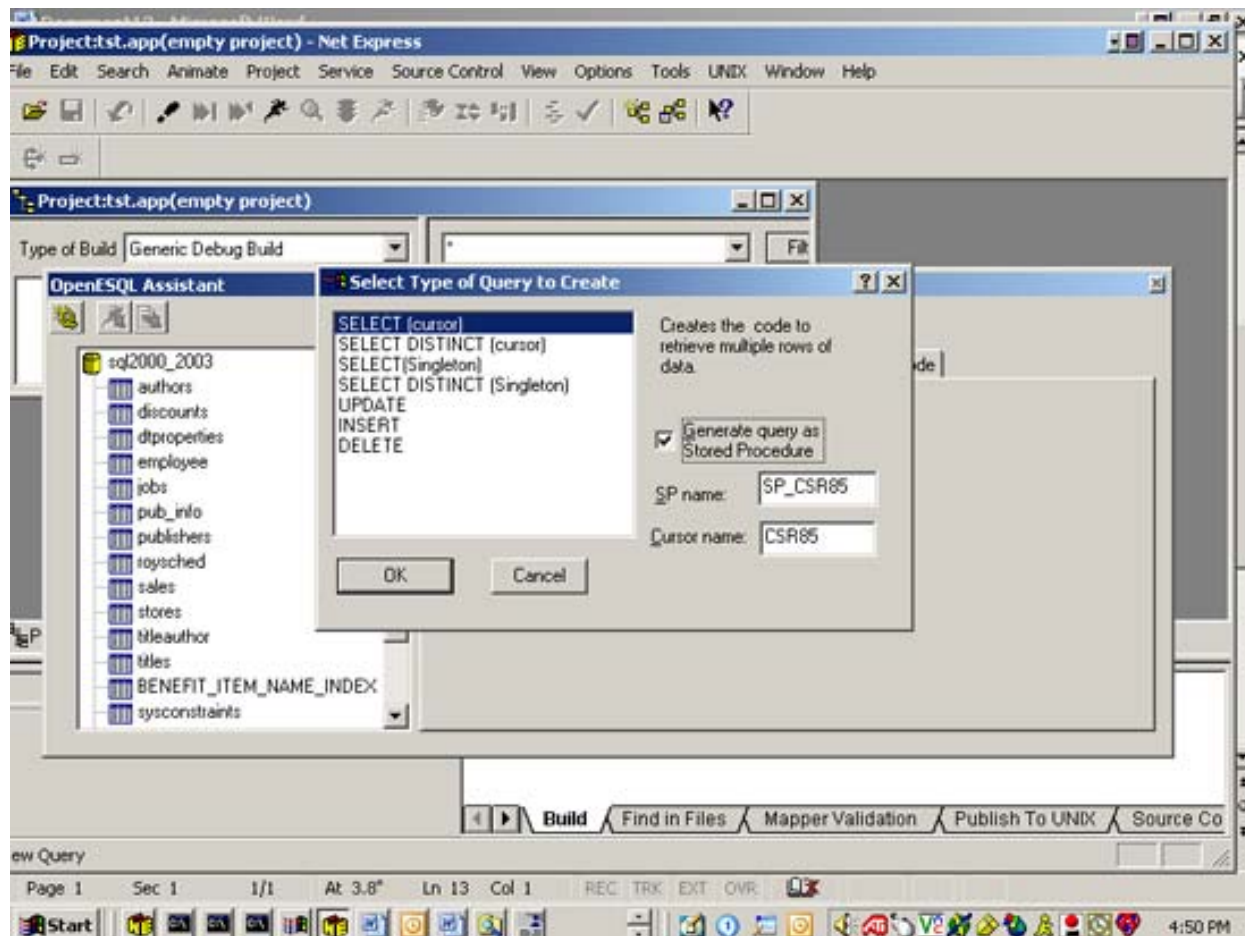
Technical Articles

Learning to Generate and Call SQL Server Stored Procedures

The Net Express product provides a simple and straightforward way to generate and call SQL Server Stored Procedures. To do this, you make use of the OpenESQL Assistant function within the Net Express product to generate the stored procedure and to generate the code necessary to call that stored procedure. This method is useful in assisting in the debugging of stored procedures as well as in helping you learn how to properly code and call SQL Server stored procedures.

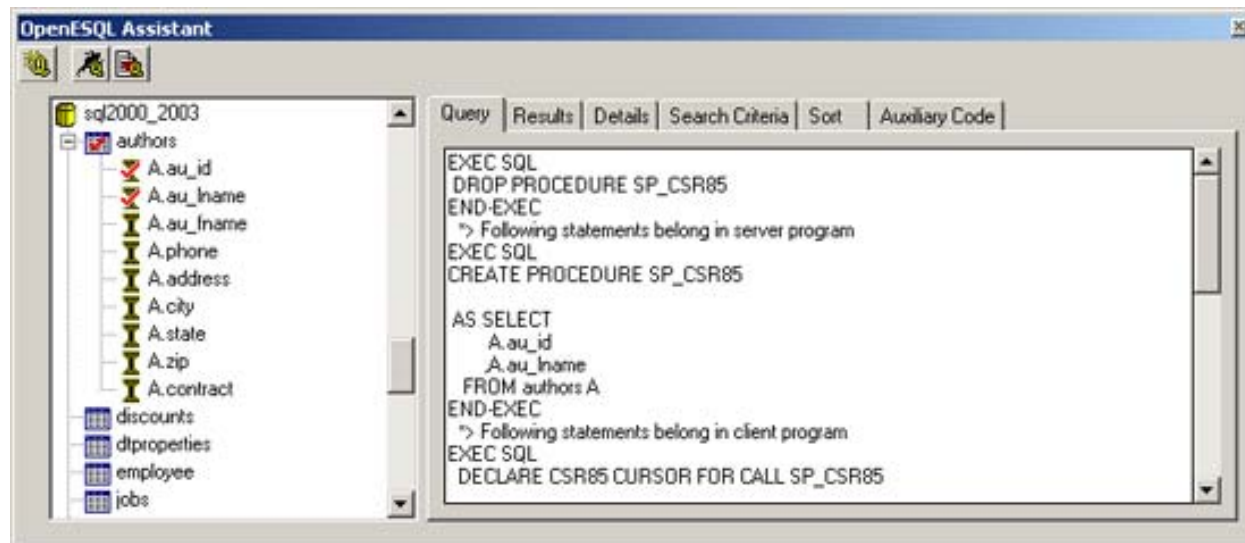
The following will show you how to use the OpenESQL Assistant:

1. Bring up the OpenESQL assistant by selecting it from the TOOLS menu.
2. Double click on the datasource name.
3. Select a table and the type of query you want to generate, make sure the box that says generate query as Stored Procedure is checked (see below)



4. Select the columns from the table by double clicking on them.

This will generate the COBOL code in the Query tab as indicated below.



Look at the Create stored procedure code-
EXEC SQL
CREATE PROCEDURE SP_CSR85

```
AS SELECT
A.au_id
,A.au_lname
FROM authors A
END-EXEC
```

This can be used in a COBOL program or modified to create a SQL script and run in Microsoft Query Analyzer-
Script would look like:

```
CREATE PROCEDURE SP_CSR85
AS SELECT
A.au_id
,A.au_lname
FROM authors A
```

To test the script in Query Analyzer execute sp_csr85.

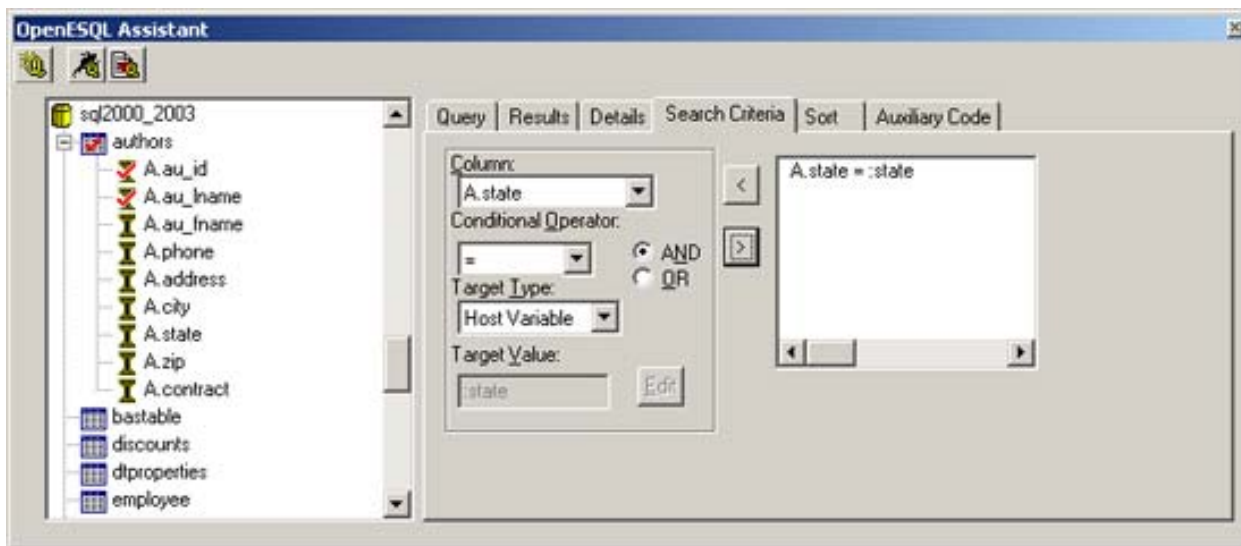
Next look at the code to call the stored procedure since this is using a cursor the declare cursor statement is doing the call. The generated query did not specify a where clause therefore no input parameters were required.

```
EXEC SQL
DECLARE CSR85 CURSOR FOR CALL SP_CSR85
END-EXEC
```

The fetch from the stored procedure will retrieve the information into the host variables.

```
EXEC SQL
FETCH CSR85 INTO
:au-id
,:au-lname
END-EXEC
```

The query can be modified to contain a where clause by clicking on the Search Criteria tab and entering the conditional criteria. In this sample we will only select authors from a specified state.



Note how the stored procedure code has changed after adding the selection criteria and now the call to this stored procedure indicates an input parameter.

```
CREATE PROCEDURE SP_CSR85
( @state char(2))
```

```
AS SELECT
A.au_id
,A.au_lname
FROM authors A
WHERE ( A.state = @state )
```

Call to stored procedure shows input parameter 'state', no parameter type is required since the default is input.

```
EXEC SQL
DECLARE CSR85 CURSOR FOR CALL SP_CSR85
( :state)
END-EXEC
```

(c) Micro Focus.

SupportLine Newsletter is a free, monthly email publication for the developer community. Email all correspondence to the editor via SupportLine.Newsletter@microfocus.com