



Technical Articles

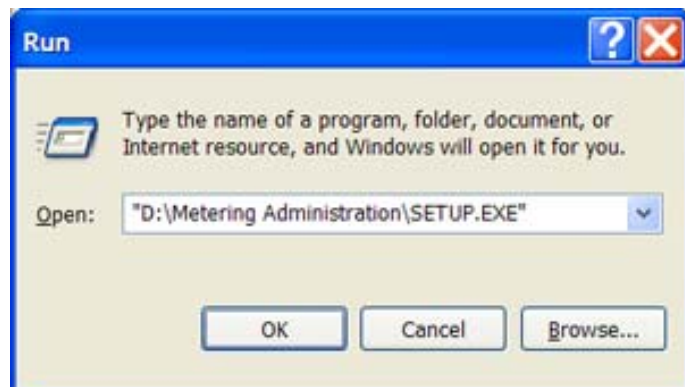
Using Metering dongle for Revolve Enterprise Edition

For the customers with Revolve Enterprise Edition it becomes necessary to meter their code. To do this, a hardware key (commonly called a dongle) with a lines of code (LOC) setting is sent to the customer. To use this dongle the following procedure has been created to show how to install and utilize the dongle and its software.

Installing Metering Administration software

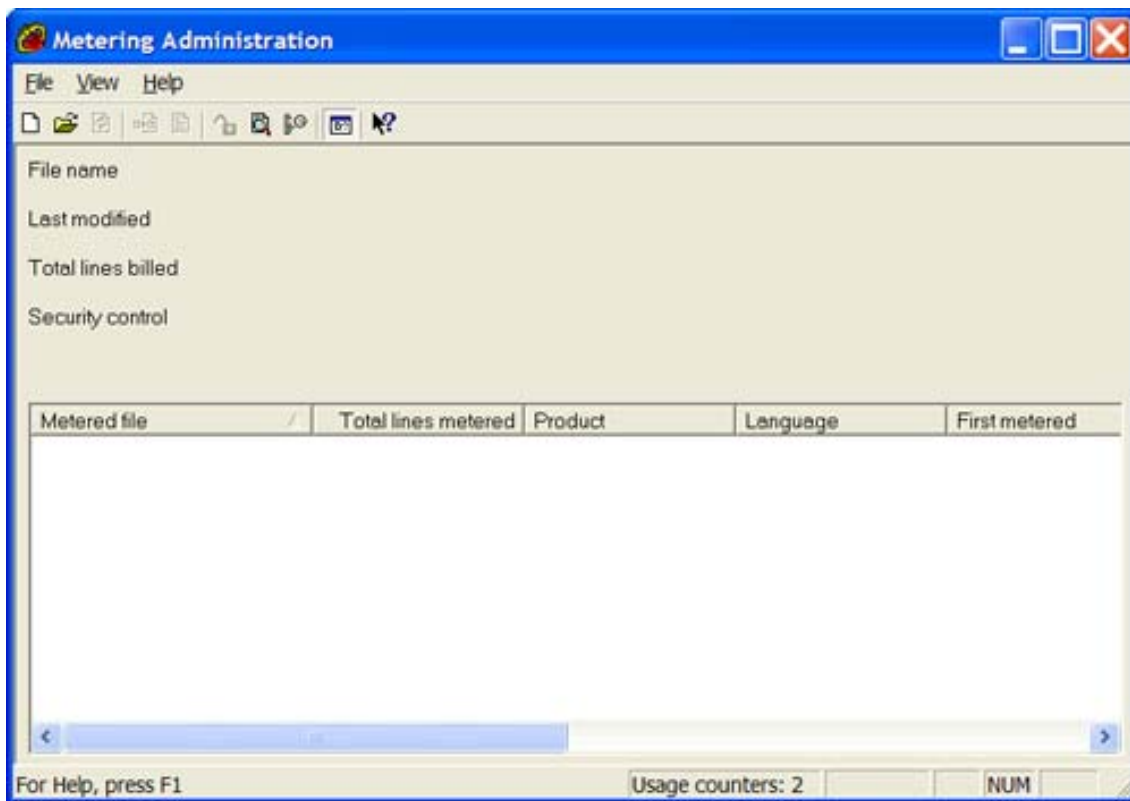
Install Metering Administration by mapping to the location on the Revolve 6.2 CD –

Start/Run

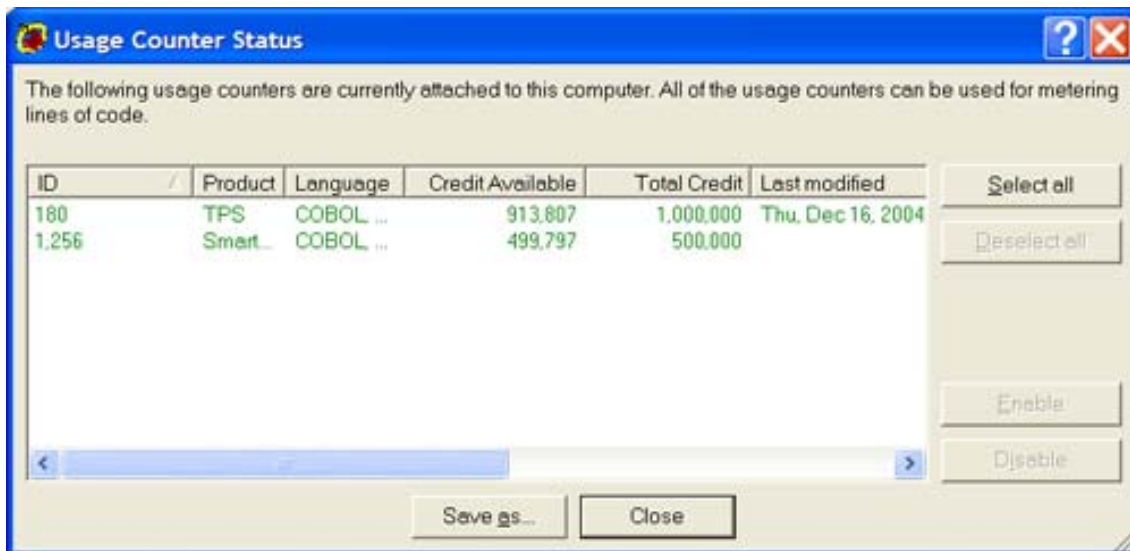


This takes less than a minute to install. There is no licensing for this software.

When you start the software – Start/Programs/Micro Focus Metering Administration/Metering Administration – you will get this screen.



To enable the dongle on your machine select the  icon, the 3rd icon from the right, which will read "Usage Counters" if you mouse the over it. This will bring up a screen similar to:



Your display will come up with just one line which, when selected, will activate the ENABLE button. Select the ENABLE button.

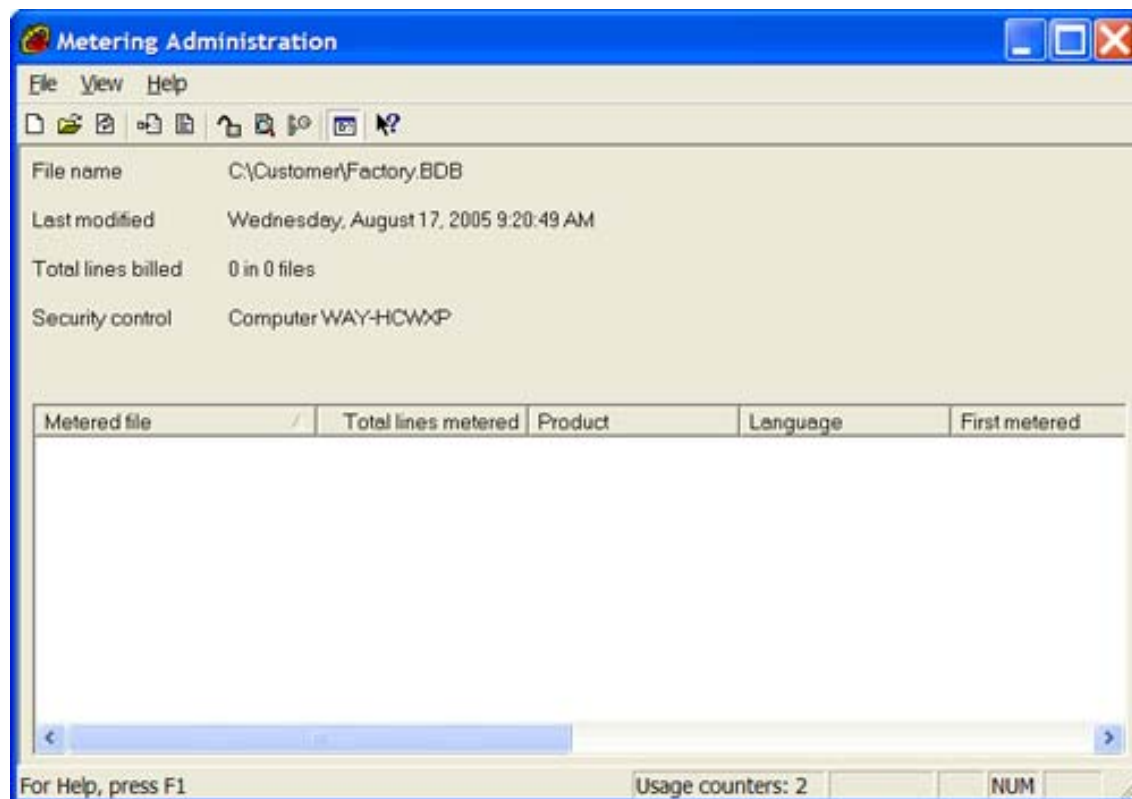
Select CLOSE.

At the main screen, press the NEW icon - you will get this screen:



You only need to keep “Computer Name” checked and enter your machine name. To fill out the other entries is not necessary, but they are provided so that you can fill them in to allow for tighter security on the dongle.

Select OK and you will be presented with the following screen:



Please note that the more information you fill in for the SECURITY CONTROLS entries page, the more information you'll see on this window next to the SECURITY CONTROL line.

You should be able to meter your code at this point.

Metering the Code:

Go into Revolve Enterprise Edition
Open the Project; go to Enterprise/Analysis Tools
You should get this wizard window to popup:



Select Next

By default the next screen will point to the sample factory.bdb file, this is ideally not the one you point to, you need to change the path to the valid path that your factory.bdb file you just created is located:

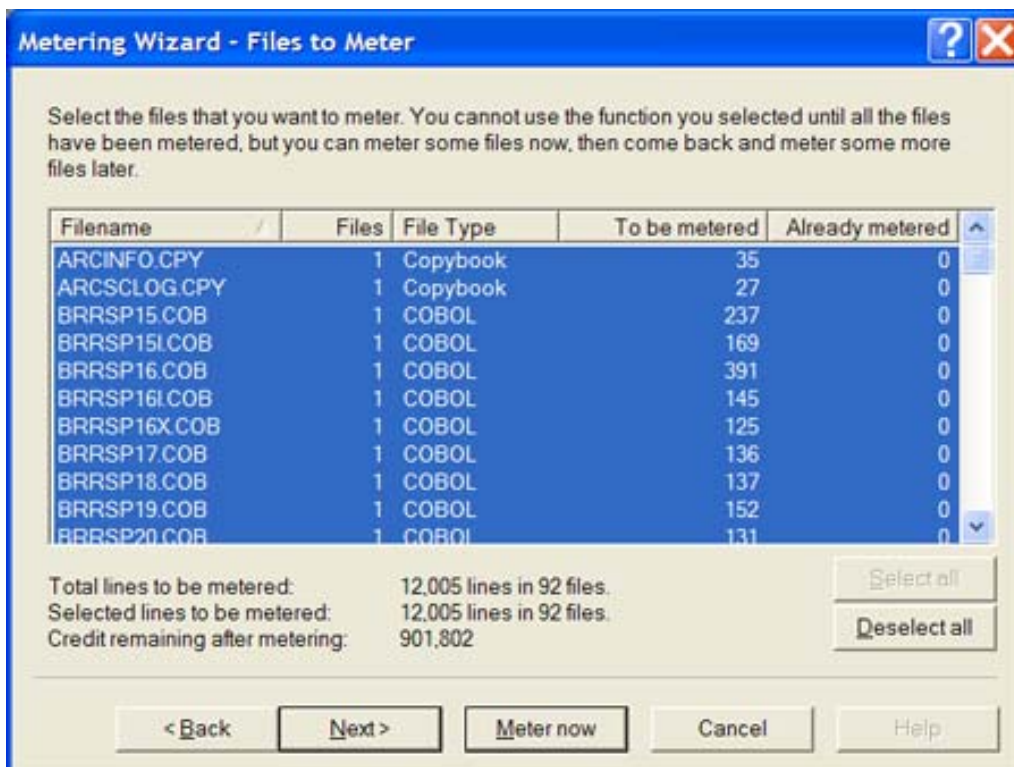


Select NEXT

You will get the following screen:

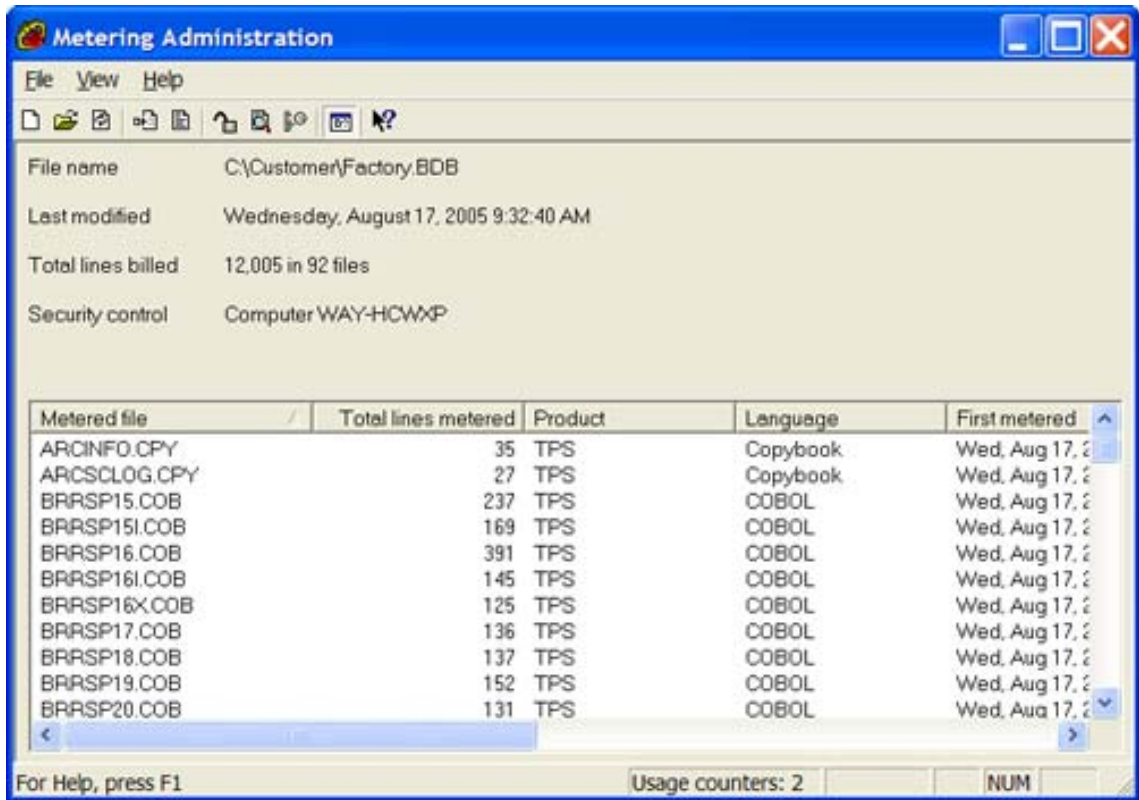


Select NEXT if you question the metering portion
You can Select METER NOW – which will show this screen:



It will detail all the lines that you need to meter – you can now select the Meter Now or the NEXT buttons– either one will Meter your code.

You can go back to Metering Administration and see the lines of code you just metered as well:



You should be all set to go now.

(c) Micro Focus.

SupportLine Newsletter is a free, monthly email publication for the developer community. Email all correspondence to the editor via SupportLine.Newsletter@microfocus.com