

# extend<sup>®</sup>8

Interoperability Suite

## AcuBench<sup>®</sup> | Integrated Development Environment



Increased productivity. Greater efficiency. Ease of use. AcuBench brings together the powerful tools that make up the ACUCOBOL-GT<sup>®</sup> development system—compiler, runtime and utilities—and adds graphical, drag-and-drop designers for creating user interfaces and reports, working with code and managing data. Design, create and maintain applications in a graphical integrated development environment on Microsoft Windows<sup>®</sup> systems, then deploy on any of the more than 600 platforms supported by Acucorp's COBOL Virtual Machine<sup>™</sup>.

### EXECUTIVE OVERVIEW

The AcuBench integrated development environment (IDE) offers a graphical interface to all the tools in the ACUCOBOL-GT development system, along with specialized code generation tools that help you increase productivity and decrease time to market.

Work with code in an easy-to-customize editor that recognizes ACUCOBOL-GT syntax, includes special tools for manipulating code, provides code completion help for finishing COBOL phrases and gives you an interface for adding template paragraphs to your code with a simple keystroke.

Design screens using a drag-and-drop, WYSIWYG interface, then let AcuBench generate the Screen Section code needed to DISPLAY and ACCEPT the screen. Use a similar interface to create graphical reports, then let AcuBench generate the code to create and print the report.

### AcuBench gives developers:

- Specialized designers for creating screens, reports, Working-Storage and Linkage sections, data descriptions and data handling code
- Support for Acucorp's Thin Client technology, allowing you to develop in the Windows environment, but compile, debug and run on UNIX<sup>®</sup> or Linux<sup>®</sup> servers or create a graphical front end for UNIX/Linux applications
- An integrated source-level debugger with graphical interfaces for monitoring data items, memory usage and call stack information
- A highly configurable interface with new, contemporary icons and the ability to customize keyboard shortcuts; toolbars; and code, screen and report defaults

A key element of Acucorp's *extend*<sup>®</sup>8 family of solutions, AcuBench makes it easy and efficient to develop with ACUCOBOL-GT.

## ACUBENCH VERSION 8 HIGHLIGHTS

### Ease of Use

Developers familiar with Microsoft Windows will find the AcuBench interface intuitive. Basic Windows features like cut and paste, tabbed file navigation, find and drag-and-drop are included in all the AcuBench editors and designers. Building from these basics, the IDE adds more advanced functionality useful for COBOL development, like the ability to select vertical blocks of text; identify paragraph and command scope; and access lists of paragraphs, variables and constants within a program. And context-sensitive help saves time by automatically displaying information from online manuals.

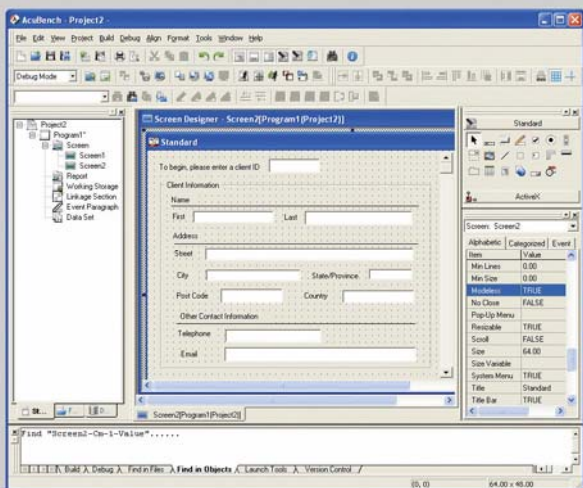
Almost every feature of AcuBench can be configured, so you can shape your development environment. Customize keyboard shortcuts; change existing toolbars or add new ones; choose whether to dock, hide, or float the various windows that make up the AcuBench workspace; add color coding in the Code Editor; and create shortcuts to outside applications within the AcuBench menu structure.

### Centralized Development Tasks

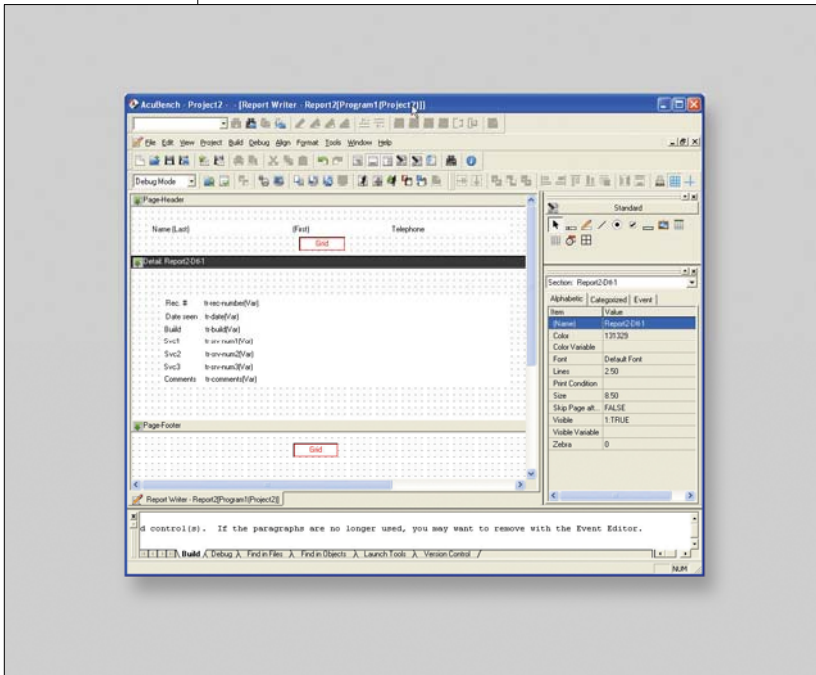
AcuBench combines tools for every stage of the development process, from design and coding to testing and debugging. With its built-in support for Thin Client and its ability to interface with major version control systems, AcuBench makes it easy to maintain a centralized code base while allowing you to test on multiple platforms.

Project management, screen and report creation, and code development facilities come together in a single, intuitive interface. AcuBench can share information between different designers and code generation tools and allow safe, efficient task switching while preserving vital state information.

All the elements of your COBOL application, large or small, are identified, added to and tracked by AcuBench as part of a project. As a result, applications enjoy a standard structure that makes them easier to manage and maintain.



**The AcuBench Environment** AcuBench extends and enhances the ACUCOBOL-GT development system with a developer-friendly graphical environment.



**Drag-and-Drop Screen and Report Design** Create graphical and character-based screens as well as HTML and plain text reports with graphical, WYSIWYG designers.

## Automatic Code Generation

By enabling automatic code generation, you can direct AcuBench to handle many aspects of application development for you. Design a screen in the Screen Designer and then direct the workbench to generate a Screen Section and add code to DISPLAY and ACCEPT the screen at run time. Describe a file definition in the File Designer, then have AcuBench create FD and SELECT COPY files. Create a report in the Report Composer and have AcuBench generate the code to drive the report process.

Use the auto-load feature to automatically generate code for loading data into your list boxes, combo boxes, paged list boxes and paged grids, reducing coding hours to minutes.

You can also create templates for source code, screens and reports to help establish and maintain consistent standards.

## Centralized Compiler and Runtime Management

AcuBench includes a simple interface that allows you to quickly and easily build compiler and runtime command lines and set environment variables to apply when you run your program from within AcuBench. This Project Settings interface includes a straightforward runtime configuration file editor that lists the available configuration variables in functional groups, for ease of reference.

You can save groups of compiler, runtime and environment options in project modes, then quickly switch between modes to change compiler and runtime behavior or modify the AcuBench environment settings.

## ACUBENCH VERSION 8 FEATURES AND BENEFITS

| FEATURE  | BENEFIT   |
|--|---|
| <b>Ease of Use</b>   |   |
| <b>Integrated user interface</b>                               | Perform all development tasks, from design and coding to testing and debugging, in a single, integrated environment.  |
| <b>User-configurable main application window</b>               | Move, dock, undock or hide various interface elements, including toolbars. You can also customize existing toolbars or create new ones.   |
| <b>Customizable keyboard shortcuts</b>                         | Assign keyboard key combinations to AcuBench commands, or change existing keyboard shortcuts according to your personal preferences.  |
| <b>Context-sensitive help</b>                                  | Highlight a subject and press <b>F1</b> for an automatic display of help from the online manual.  |
| <b>Project Management Capabilities</b>                         |   |
| <b>Standard project development model</b>                      | Projects and their programs exist within a standard workspace organization, simplifying project development and management.   |
| <b>Flexible access to project components</b>                   | The Workspace window contains three different views of your projects, reflecting different approaches to your code. The Structural View shows programs that contain AcuBench-generated code and provides access to the graphical designers. The File View lists all files in each project (including COPY files and resources), grouped by type. The Data View lists the data files associated with each project. |
| <b>Support for concurrent development of multiple projects</b> | Each workspace can contain multiple projects, allowing you simultaneous access to the programs, data files and related COPY files and resources used by multiple projects.  |
| <b>ACUCOBOL-GT Thin Client support</b>                         | With the Thin Client, you can maintain server-based applications on a remote UNIX, Linux, or Windows server while using AcuBench for program development and maintenance. Centralize application maintenance while adding flexibility to your development environment.  |
| <b>AcuXUI™ support</b>   | With AcuXUI, you can design, develop and test graphical applications in AcuBench. AcuXUI makes use of your Java Runtime Environment (JRE) to drive the graphical display environment variables suitable for your environment. These are automatically loaded at installation. Toggle between AcuXUI and the local runtime environment by clicking a button.   |
| <b>Support for third-party version control software</b>        | A configurable menu system within AcuBench allows you to add third-party version control commands to your workspace, giving you an easy way to integrate your existing version control software with your projects, or to add a new version control system.   |
| <b>Compiler and runtime settings management</b>                | You can create multiple groups of compiler and runtime flags for each project, then switch easily between the command lines you've established. Each group of settings can include its own configuration file.  |
| <b>Integrated configuration file editor</b>                    | This graphical editor lists configuration variables in convenient, contextual groupings, helping you create or edit ACUCOBOL-GT runtime configuration files.  |

### Command-line interface

For faster builds, use the command line to automatically generate and build multiple programs from a batch file. You can even write a script to have compiling results emailed to you when the build is complete.

## File Designer and Utilities

---

### Menu access to external programs and utilities

A simple Launch Tools interface lets you launch external applications directly from the AcuBench Tools drop-down menu or from an AcuBench toolbar.

### Specialized designers to facilitate automated code generation

Work in easy, graphical interfaces, then have AcuBench generate code for screens, report sections, Working-Storage and Linkage section items, file description (“.fd”) and SELECT (“.sl”) COPY files, XFD declaratives, user-defined I/O paragraphs and other program elements.

### Integrated source-level debugger

The AcuBench integrated debugger lets you edit code while debugging and provides graphical interfaces for monitoring variables and memory usage, displaying tracing and call stack information and more.

### Graphical interfaces to external ACUCOBOL-GT utilities

Launch external utilities like **Boomerang**, the Thin Client, and AcuXUI from AcuBench. (Note: these utilities are licensed separately.) Also included are tools for facilitating the addition of ActiveX and .NET controls to your projects, tools for working with XML and other data types, a log file utility, **cblutil**, **vutil** and more.

## Code Editor Functions

---

### Automated COBOL code completion capabilities

An optional code completion prompt provides lists of options for completing some COBOL statements. You can also create code templates from frequently used routines for insertion into your code.

### Code parameter hints

Optional code parameter hints can provide suggestions for using certain common COBOL statements.

### COBOL-sensitive code highlighting

Format code according to either ANSI standard format or terminal source format, and highlight reserved words, literals and other code components for easy identification. These tools help you to identify various types of code statements at a glance and to recognize spelling errors quickly.

## Screen Designer and Report Composer Functions

---

### Graphical and character-based Screen Designer

Create and maintain both graphical and character-based screens for your application using a WYSIWYG, drag-and-drop interface, then direct AcuBench to generate the Screen Section and Procedure Division code needed to display the screen.

### Interface for creating graphical and character reports

Design sections of a report using a drag-and-drop graphical designer and have AcuBench generate report code into an “.rpt” COPY file. Graphical reports are generated in HTML format; character reports are simple, text-only, line sequential files.

### Auto-load feature

Automatically generate the code to load data into your list boxes, combo boxes, paged grids and paged list boxes.

### Event editor

Code paragraphs to be executed at selected entry points in the AcuBench generated code. You can add event and embedded procedures as you design your screen, or code before and after print procedures as you create your report through a Property window Event interface.

**Customize control defaults**

Determine the default settings for your graphical screen and report controls, then add the new defaults to an AcuBench ".ini" file and share them between all of the developers in the group. This helps to create and maintain a standard appearance for screens and reports.

**Screen import capabilities**

Import existing character-based and/or graphical screens into the Screen Designer. This can facilitate the process of converting character screens to graphical format, or help you create screen templates to standardize the look and feel of your user interface.

**Support for ActiveX and .NET**

Add ActiveX controls and .NET assemblies to your applications, in addition to standard controls. With a design-time license, ActiveX controls can be drawn on the screen form and edited through a Property window, just like standard controls.

**Configurable logo screen display**

Choose from 1 - 300 seconds for logo-screen display time.

#### PLATFORM SUPPORT

- Windows 2003
- Windows XP
- Windows NT Server
- Windows 2000
- Windows Vista

#### REQUIREMENTS

- Intel® Pentium® III compatible CPU, 300 MHz minimum; Pentium IV recommended
- 64 MB of RAM; 128 MB recommended
- 40 MB of available hard disk space; 120 MB recommended
- Mouse
- 800 x 600 VGA display or better; 1024 x 768 VGA display recommended (supplied with AcuServer® and ACUCOBOL-GT)
- ACUCOBOL-GT Version 8 or later development system

**Acucorp Corporate Headquarters** 800.262.6585 (within the U.S. and Canada) or +1 858.689.4500 | [info@acucorp.com](mailto:info@acucorp.com)

**European Offices** France: 0800.835.135 | Germany: 0800.1825443 | Italy: +39 0523.606234

The Netherlands: +31 (23) 5689.138 | UK: 0800.328.4967

**Worldwide Locations** For a complete listing, visit [www.acucorp.com](http://www.acucorp.com)

Acucorp offers a wide variety of consulting and training assistance as part of our business solutions. Technical experience in analysis, development and project management is available to provide the level of support your business requires.

© 2007 Acucorp, Inc. All rights reserved. Acucorp, ACUCOBOL-GT, AcuBench, AcuConnect, Acu4GL, AcuSQL, AcuServer, and *extend* are registered trademarks of Acucorp, Inc. AcuXDBC, AcuXUI, and "COBOL Virtual Machine" are trademarks of Acucorp, Inc. Acu4GL is protected by U.S. patent 5,640,550, and AcuXDBC is protected by U.S. patent 5,826,076. Other brand and product names are trademarks or registered trademarks of their respective holders.