

DATA SHEET



**UPGRADING TO NET EXPRESS
V5.1, SERVER FOR COBOL V5.1,
OR SERVER FOR SOA V5.1**



V5.1 delivers the additional improvements to performance and stability that were delivered with the initial v5.1 release and is continually improved with each subsequent WebSync release

As announced in June 2008 with the release of the v5.1 product family, Net Express v5.0 and the related COBOL Server products enter the “sundown” state at the end in July 2009 and then “end of service” in July 2010. All versions prior to v5.0 have already reached end of service.

Products in the end of service state are subject to limited support services and restrictions on new corrective fixes and it is recommended that all users upgrade to the latest version.

BENEFITS OF V5.1

As an incremental upgrade to v5.0, the installation is straight-forward and low risk. It delivers the additional improvements to performance and stability that were delivered with the initial v5.1 release and is continually improved with each subsequent WebSync release (Net Express v5.1 is currently at WebSync 3).

For users of Net Express, perhaps the most important new feature of v5.1 is that it is fully supported and no sundown or end of service date has been published. It will be fully supported for at least 12 months (i.e. at least until July 2010) and regular maintenance releases are planned going beyond that date. Where Micro Focus COBOL products and applications built using them are in everyday use, this commitment provides the reassurance users need that their systems will continue to be supported by the award-winning, 24x7 support provided by Micro Focus. At least 12 months notice will be provided before the sundown or end of service.

In addition to the stability and performance improvements, the v5.1 provides additional

capabilities not available with earlier versions. For example:

PLATFORM SUPPORT

With each release of Net Express and subsequent WebSyncs, the supported platforms list is reviewed and updated to keep it current with operating system, database and application server releases. New platforms are not supported with earlier Micro Focus releases, so as users upgrade their operating environment, they should review the version of their Micro Focus products to ensure their new platform is fully supported.

COBOL ENHANCEMENTS

Besides the regular maintenance, v5.1 of Net Express added (with the “with .NET option”) full support for Visual Studio 2008 and .NET Framework v3.5 allowing for full usage of the last WPF & WCF services.

ECLIPSE IDE

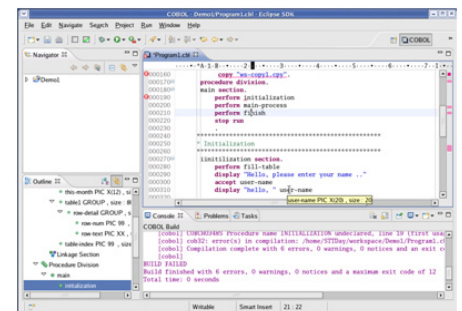


Figure 1: Screen shot of Eclipse IDE

The Eclipse IDE is probably the widest used integrated development environment across Linux, UNIX and Windows. The Micro Focus COBOL integration makes

In situations where it's not feasible to upgrade to v5.1 immediately but the reassurance of on-going support is required, it is possible to purchase an "Extended Support" plan from Micro Focus. Please contact your Micro Focus account team for details.

COBOL a first-class citizen within the IDE with advanced features including COBOL syntax highlighting, margins, reference lookups, COBOL data query/modification and the graphical Interface Mapper (which makes it easy to turn your existing COBOL into Web or Java services). See <http://www.microfocus.com/products/eclipse/NetExpressforEclipse.asp> for more information.

The Eclipse IDE has been welcomed by users who wish to use the same development tools and processes across COBOL and Java and where applications are being developed and deployed across Linux, UNIX and Windows servers.

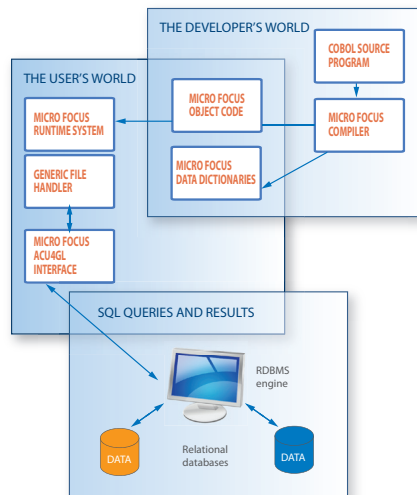
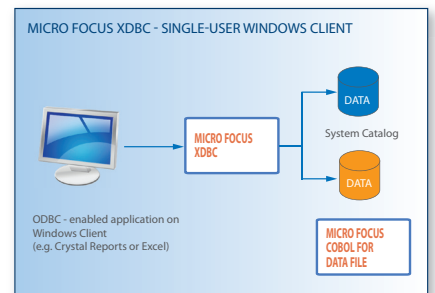
access data stored in a database (SQL Server, Oracle or DB2) using standard COBOL OPEN, READ, WRITE and CLOSE verbs – no re-write is needed.

MICRO FOCUS XDBC

Frequently, COBOL applications store important data that business analysts or other line of business users need to access. They use tools such as Microsoft Access, Business Objects etc. which cannot access the COBOL data. With XDBC, it is easy to create a standard ODBC interface on the COBOL data, allowing those tools to do their reporting without having to change the entire COBOL system to a RDBMS.

DATABASE CONNECTORS

If, for example, your organization needs to standardize the storage of all data in a relational database, this could have significant impact on COBOL programs which expect to be able to access ISAM data files. With the Micro Focus Database Connectors, existing COBOL programs can



EXTENDED SUPPORT

In situations where it's not feasible to upgrade to v5.1 but the reassurance of on-going support is required, it is possible to purchase an "Extended Support" plan from Micro Focus. Please contact your Micro Focus account team for details.

ABOUT MICRO FOCUS

Micro Focus, a member of the FTSE 250, provides innovative software that allows companies to dramatically improve the business value of their enterprise applications. Micro Focus Enterprise Application Modernization and Management software enables customers' business applications to respond rapidly to market changes and embrace modern architectures with reduced cost and risk.

For additional information please visit:
www.microfocus.com

Micro Focus Worldwide

Australia	+61 800 632 626
Austria	+43 800 293
Belgium	+32 3 218 21 26
Brazil	+55 3443 7431
Canada	+1 877-772-4450 x1123
Denmark	+ 45 36944754
France	+33 800 835 135
Germany	+49 800 182 5443
Hong Kong	+852 2168 0600
India	+91 11 4060 1560
Italy	+39 800 784 420
Japan	+81 3 5793 8550
Mexico	+52 55 9171 1000
Netherlands	+31 (0)23-5540 640
Norway	+47 21 601 606
Portugal	+351 21 723 0726
Singapore	+65 6622 5466
Spain	+34 915 726 699
Switzerland	0800 564 247
Sweden	+46 8 505 165 40
United Kingdom	+44 800 328 4967
United States	+1 877 772 4450
Other Countries	+44 1635 32646