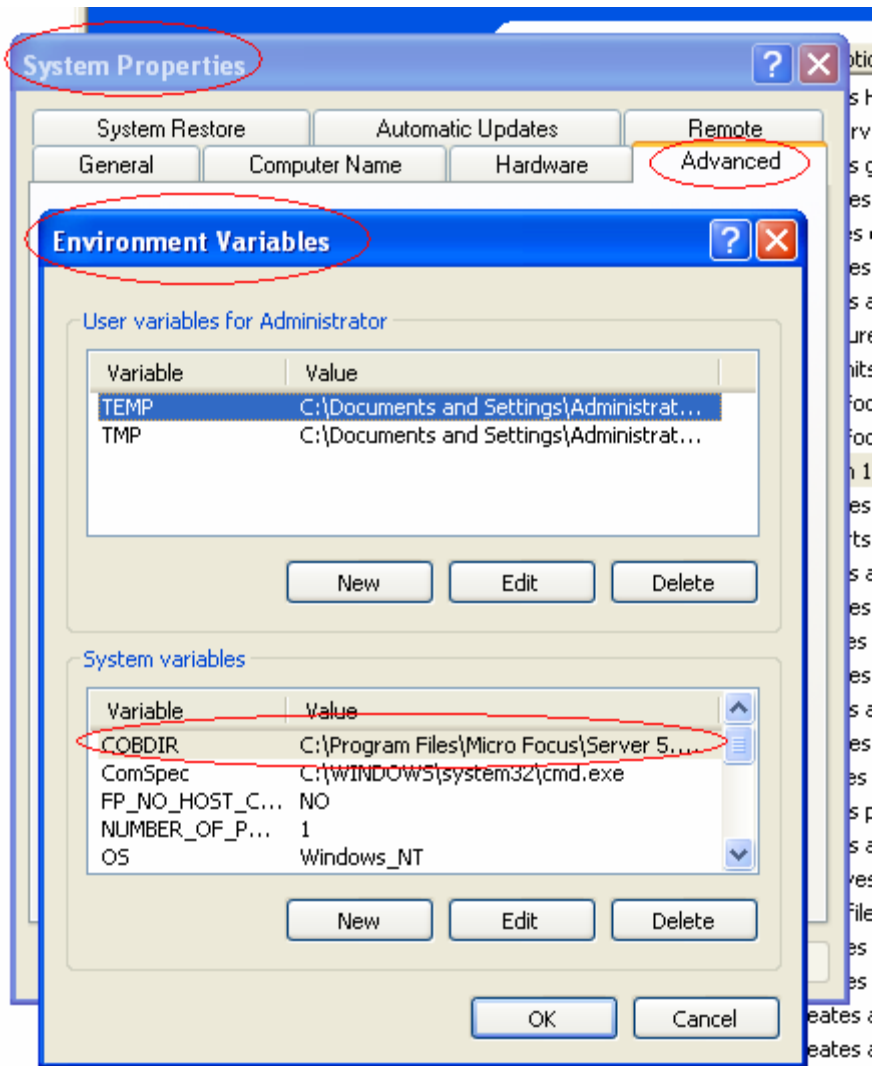




Running two versions of the runtime under one license is permissible with prior agreement from your sales representative usually for a period of sixty days; this may be the scenario when upgrading from one version of the product to another in the final stages of production testing.

The problem in this instance occurs if you install the updated version of Server for COBOL alongside an existing earlier version and then go on to use a version of AppTrack which does not match the correct version of Micro Focus License Manager. The License Manager runs as the Windows service mflmwin which can be found in the /Bin directory; this was introduced in version 5.0 WrapPack 5 onwards. To this end you must ensure that you use versions of AppTrack and License Manager which are compatible. Clearly, it makes sense to implement the latest versions of these utilities given that they are more likely to contain the most up-to-date functionalities and issues which have been addressed.

The easiest way to achieve this is to ensure that the COBDIR and PATH environment variables are set to point to path in which the latest version of the runtime is installed. This can be done at a global level via the advanced settings tab of System Properties in Windows Explorer.



In so doing, AppTrack can then be run from the DOS prompt without necessarily being in the correct path setting.

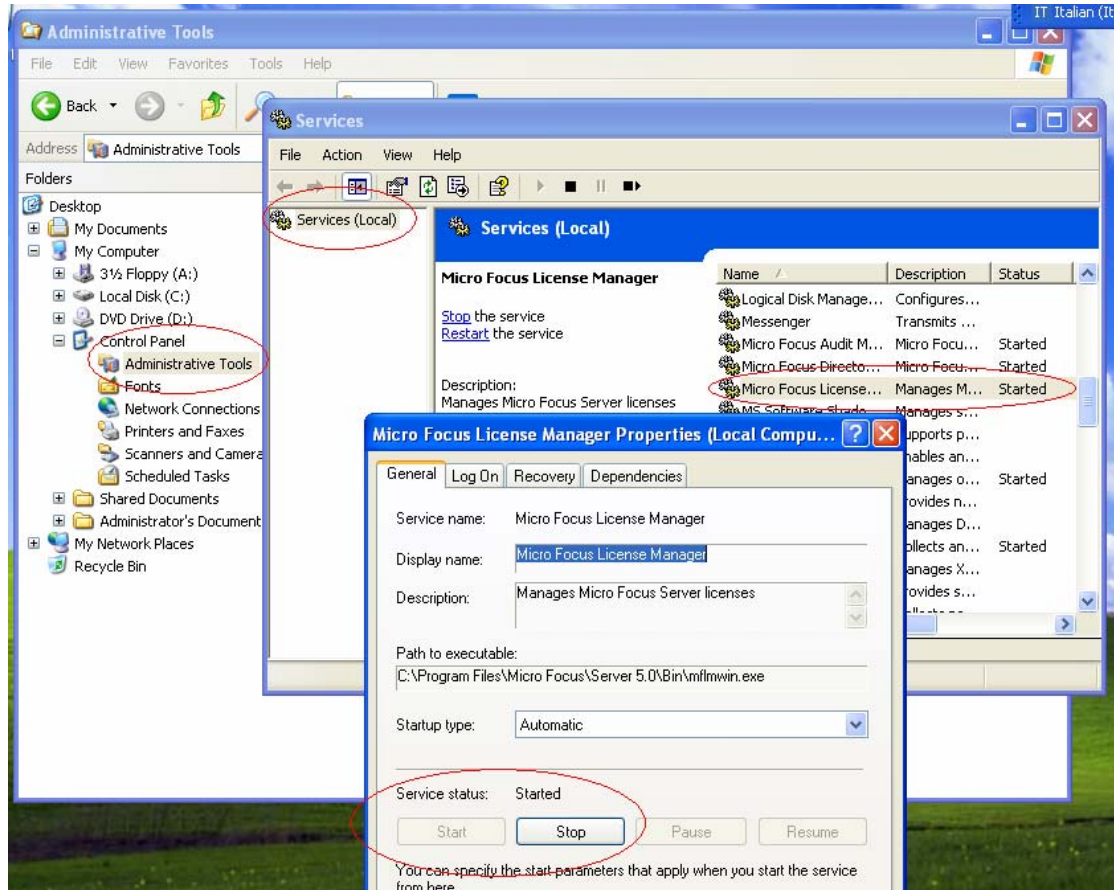
Failing that, if you do not want to make this change effective at a global level, you can drop to a DOS prompt and remove the mflmwin service from the Bin directory of the earlier installation. For example:

```
C:\Program Files\Micro Focus\Server 5.0\Bin>mflmwin -u
```

and then install it in the later version. For example:

```
C:\Program Files\Micro Focus\Server 5.1\Bin>mflmwin -i
```

First, however, you will have to stop the Micro Focus License Manager service via the Administrative Tools utility in the Control Panel. Once the changes have been affected and the newer version has been installed, the service must be restarted again. This usually happens automatically when installing at the command line. However, if it does not, then the service can be easily started via the aforementioned Administrative Tools utility.



In this particular instance, you would then have to run AppTrack from the path in which the later version of the runtime product is installed. For example:

```
C:\Program Files\Micro Focus\Server 5.1>apptrack
```

Ensuring that the COBDIR and PATH environment variables are set correctly is clearly the most effective and efficient solution to this problem.

Once the correct versions of AppTrack and License Manager are being used in unison, problems such as the **Object code error 153 on 'rdscontrol'** should no longer manifest themselves.

NOTE: this is based on Knowledge Base article reference: 25655