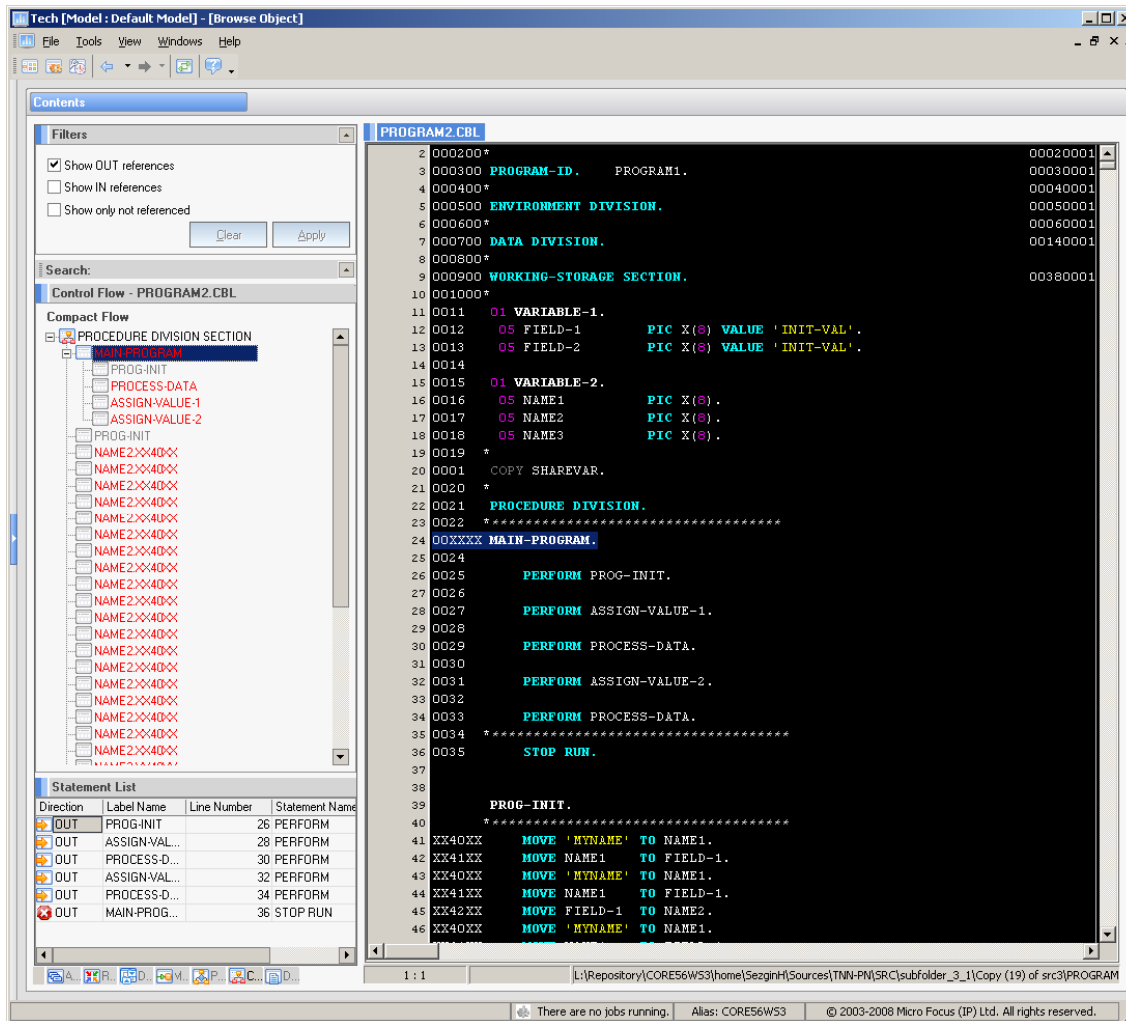


## **Product Update: Enterprise View 5.6.3**

Following our commitment to customer success we are constantly improving our products so that we can always meet the high market expectations. The latest version of **Micro Focus Enterprise View (version 5.6.3)** marks another step in that journey. This release primarily focuses on improvements and enhancements to make the product even more robust and stable. Thanks to customer recommendations, 5.6.3 is a truly solid solution for application portfolio management. You can –as always - get acquainted with the new capabilities while reading the product documentation, but this article serves to give you some early “hints” on what you can expect.

In the previous release of the product (**Enterprise View 5.6.2**) we introduced a brand-new capability that we call **Control Flow**. As you may know this is a powerful asset for the technical user that helps improving the system-wide understanding and skills transfer, by providing a very fast way to understand the flow of control through an application. In **Enterprise View version 5.6.3** we have improved this capability by adding a new view – **Compact Flow** – to the existing ones in the **Control Flow**. **Compact Flow** further simplifies the task of program understanding, displaying the program flow in terms of OUT references between labels only, i.e. it represents the top-down structure of the program. (see Figure 1). The additional user value here is that the user can now navigate among the sections and paragraphs more conveniently with fewer mouse clicks. The navigation tree on the left is also simplified, as it now only contains OUT references, which gives the user a clearer view of the program structure.



**Figure 1 – New Compact Flow display further simplifies application understanding**

In addition to brand new features, 5.6.3 includes a number of important product enhancements, a few of which we have highlighted below. First, the following improvements have been made to the parsing capability:

- o Improved support of the PL/I parser resulting in fewer unsupported syntax cases.
- o Improved JSP parser covering many cases which were previously not analyzed.
- o Improved support of the embedded ORACLE SQL parser for Micro Focus (MF) COBOL programs resulting in fewer unsupported syntax cases.

Second, a number of key improvements have been made in the general area of product performance and robustness:

- Under certain circumstances, there was an unexpected complete stop of Software Life-Cycle (SLC) processing. This has been resolved with an update to the host engine.
- We have introduced an improved snapshot refresh procedure, which has resolved a huge performance problem in Oracle 10.
- The Grep search facility of Impact Analysis now works with large packages.
- We have greatly improved the product performance during Impact Analysis startup.
- Within the Outsource Manager capability, the previous limitation of 10 selectable views for Service Level Agreement (SLA) Analysis has been removed.

We realize that it takes more than just reliable software to meet our customers' needs. That is why we aim at constant improvements of all aspects of our product – and that includes the **product documentation**. All new capabilities have been thoroughly documented. This release includes documentation updates of the Impact Analysis documentation, Configuration Manager online help, Authorizations and Models Process Guide, Tech, Builder and Dynamic Inventory online help, COBOL Process Guide. The Outsourcer Management standalone application is now fully documented.

Finally, while we are always keen to give you notification of new releases, another of our customer-focus activities is to allow input to the Micro Focus product development process to help shape future releases. You may already be aware of the Early Adopter Program for the forthcoming 5.7 release (due in 2009). If you wish to get involved, there is still time, so please contact your Micro Focus representative.

For detailed information on Enterprise View 5.6.3 see our product documentation.

*Iskra Boteva, Theodor Naidenov and Derek Britton. Iskra is a Technical Author at Micro Focus, working on the Enterprise View product; Theodor is Team Leader of the APM Support Team in Sofia; Derek is Senior Director of Product Management.*