

# Customizing HP ART

## 5.10 Templates and Skins

For version: 5.10

Revision A



## Quick Reference Guide

Use of this material to deliver training without prior written permission from HP is prohibited.



# Customizing HP ART 5.10 Templates and Skins

## Quick Reference Guide

Revision A

© Copyright 2013-2014 Hewlett-Packard Development Company, L.P.

The information contained herein is subject to change without notice. The only warranties for HP products and services are set forth in the express warranty statements accompanying such products and services. Nothing herein should be construed as constituting an additional warranty. HP shall not be liable for technical or editorial errors or omissions contained herein.

This is an HP copyrighted work that may not be reproduced without the written permission of HP. You may not use these materials to deliver training to any person outside of your organization without the written permission of HP.

### **Customizing HP ART 5.10 Templates and Skins**

Quick Reference Guide

Revision A

## Table of Contents

Introduction .....	1
Creating a Custom Template and Skin .....	3
Creating a Custom Template .....	3
Creating a Custom HPART-Rounded Skin.....	7
Adding a Custom Logo to Courses.....	9
Modifying the Course Logo .....	9
Modifying the Document Logo.....	12
Customizing the Course Branding.....	14
Updating Course Banner and Text Colors .....	14
Updating Course Text Styles .....	16
Updating the HPART-Rounded Course Skin.....	18
Updating the Simulation Skin .....	22
Modifying the Launch Windows .....	24
Modifying the Launch Window Background .....	24
Modifying the Course Launch Window Text .....	25
Modifying the Simulation Launch Window Text.....	29
Publishing the Course and Verifying the Changes.....	31
Customizing the HP ART Website .....	32
Adding Your Logo to the Website .....	32
Updating the HP ART Website Tagline.....	33
Modifying the Website Launch Module Button Color .....	34
Modifying the Website Text Font and Color .....	36

This page is intentionally left blank.

# Introduction

HP Adoption Readiness Tool (ART) is a versatile tool and you can easily adapt ART content to reflect your company's branding. You do this by creating a new ART template so that you can add your logo and color schemes to courses and documents.

This document covers the process to create a new template and the most common template and skin customizations.

## Creating a Custom Template and Skin

During HP ART 5.10 Author Developer Kit installation, the default HP ART 5.10 template is automatically installed in the HP Adoption Readiness Tool installation folder. When you first launch the HP ART editor, the tool dynamically creates a local repository holding all required resources used to create and manage ART content, including the ART 5.10 template. The default template is copied over from the installation folder.

To create a custom template:

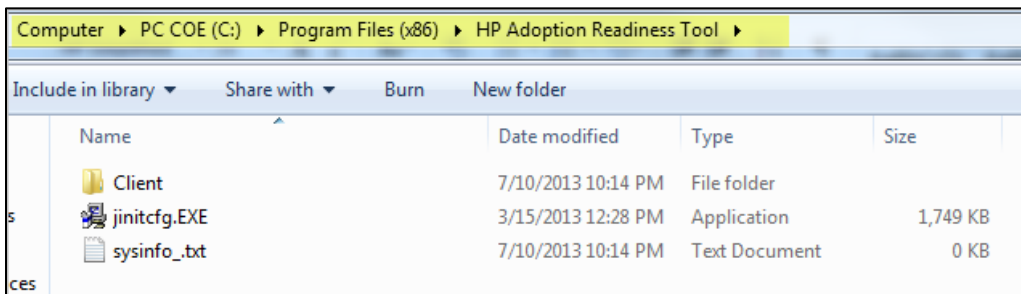
1. Remove the default HP ART template.
2. Copy the HP ART 5.10 template.
3. Update the template descriptive name.

## Creating a Custom Template

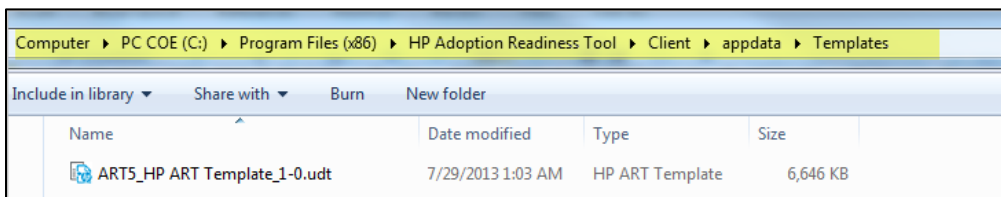
### Removing the Default HP ART Template

To create a template with the same GUID, you **must** first remove the default template from the installation folder. To remove the default template, perform the following steps:

1. Navigate to the HP Adoption Readiness Tool installation folder C:\Program Files (x86)\HP Adoption Readiness Tool.



2. Navigate to the Client>appdata>Templates folder.



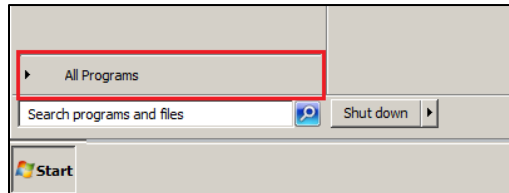
3. Remove the ART5\_HP ART Template\_1-0.udt file.



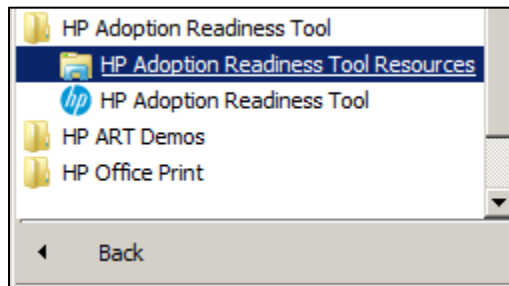
### Copying the HP ART 5.10 Template

Copy the existing HP ART 5.10 template to use as a starting point for your customized template. To copy the template, perform the following steps:

1. Navigate to the local templates folder by selecting the Start>All Programs menu.

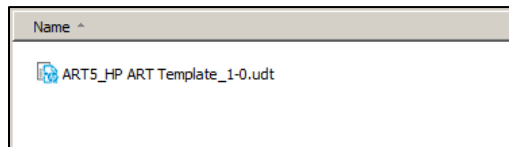


2. Select the HP Adoption Readiness Tool Resources>HP Adoption Readiness Tool Resources option.



3. Open the templates folder.

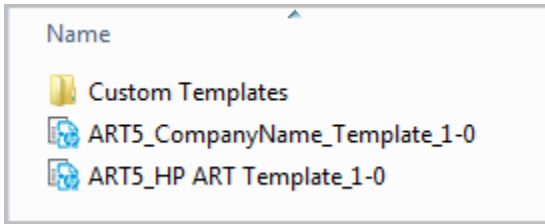
The folder contains the HP ART 5.10 default template.



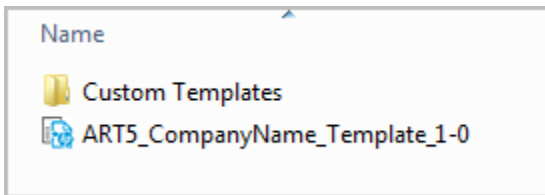
4. Copy and paste ART5\_HP ART Template 1-0.udt and name your new template with the desired name, typically your company name. For example, ART5\_CompanyName\_Template\_1-0.udt. Because the copy function was used, the new template will have the same GUID as the original template.

**Note:** You should not have more than one template with the same GUID in the templates root directory. To easily switch active templates, it is best practice to create a new folder in the root templates directory to store the templates not in use.

5. Create a new folder titled Custom Templates in the templates root directory.



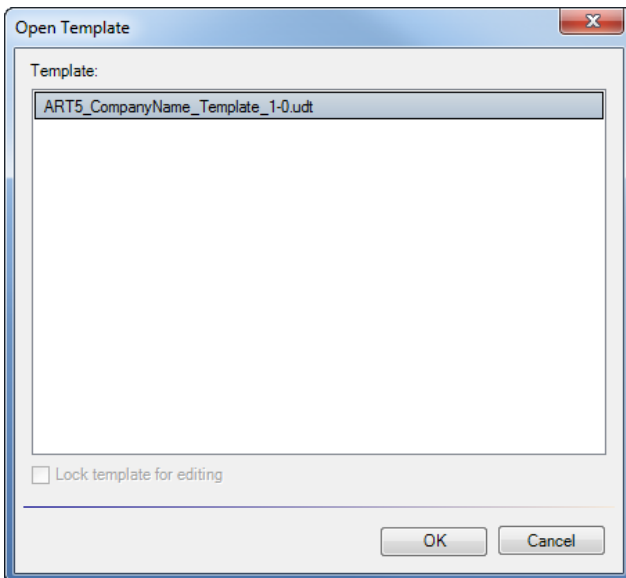
6. Move ART5\_HP ART Template 1-0.udt to the Custom Templates folder. ART5\_CompanyName\_Template\_1-0.udt is now the active template and will be applied the next time an ART file is opened.



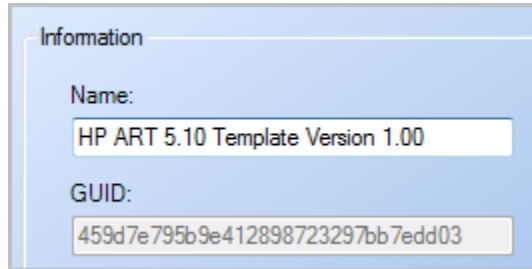
### Updating the Template Descriptive Name

To view the template and update the template descriptive name, follow these steps:

1. Launch the HP ART Readiness Tool and click Go to editor in the Quick Start window.
2. From the File menu, select Open>Template.
3. Select ART5\_CompanyName\_Template\_1-0.udt from the Template window and click OK.



4. If necessary, click the General tab.
5. Note that this template has the same name and GUID number as the original HP ART template.

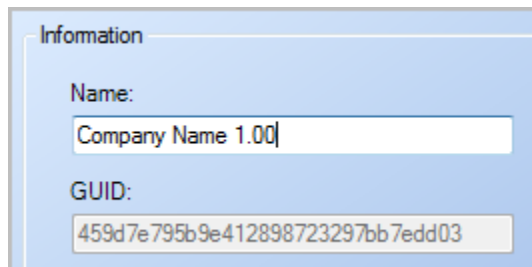


Information

Name:  
HP ART 5.10 Template Version 1.00

GUID:  
459d7e795b9e412898723297bb7edd03

6. In the Name field, change the template name to **Company Name 1.00**.



Information

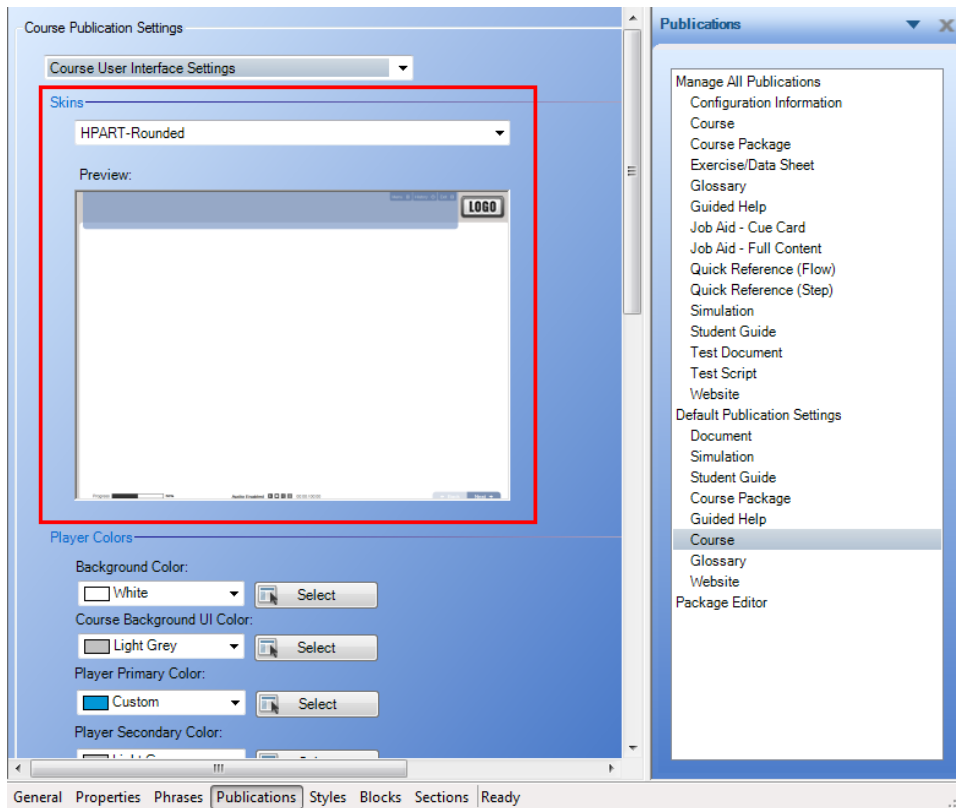
Name:  
Company Name 1.00

GUID:  
459d7e795b9e412898723297bb7edd03

7. Save the template.

## Creating a Custom HPART-Rounded Skin

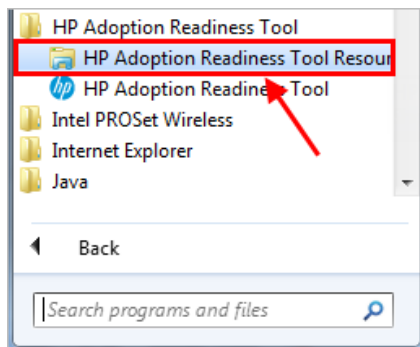
The HPART-Rounded skin is the customized skin released with the ART 5.10 Development Kit.



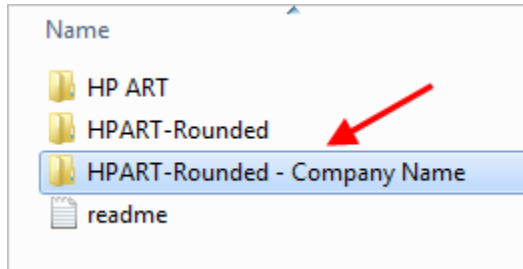
Several customizations made to the HPART-Rounded skin override template settings. If you would like to use this skin in your customized template, and plan on changing the colors of your course framework, you should copy HPART-Rounded to create your own custom skin. Creating a custom HPART-Rounded skin allows you to easily share your updated skin customizations with others in your organization.

To create a custom HPART-Rounded skin, perform these steps:

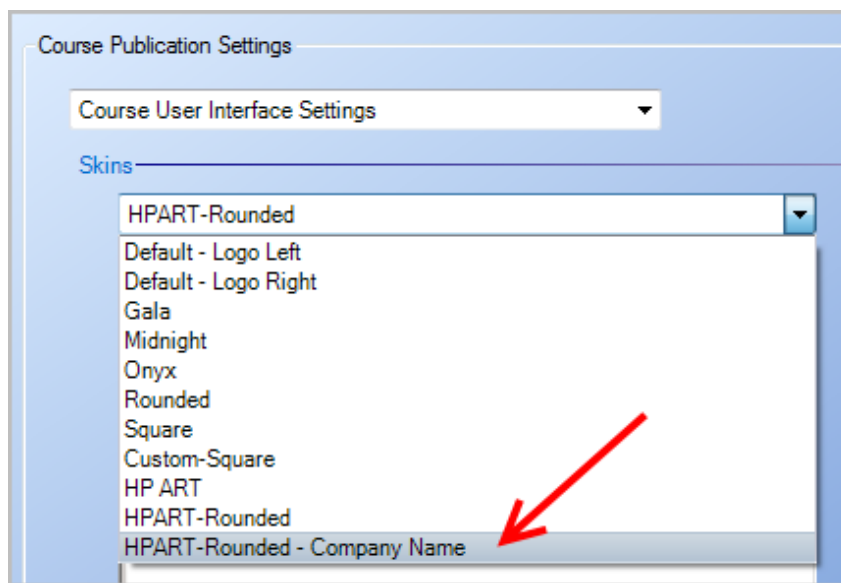
1. Using the Windows Start menu, navigate to HP Adoption Readiness Tool Resources.



2. Navigate to the skins>Course>custom folder.
3. Locate the HPART-Rounded skin, right-click the skin folder and select Copy.
4. Paste into the Custom skin folder.
5. Give the new skin folder a unique name by keeping HPART-Rounded in the name and adding your company's name. For example, HPART-Rounded - Company Name.



6. Open your template and navigate to Publications>Default Publications Settings>Course>Course User Interface Settings and select your new custom skin from the drop-down menu.



7. Your skin has been added. Skin customizations are discussed later in this document.

## Adding a Custom Logo to Courses

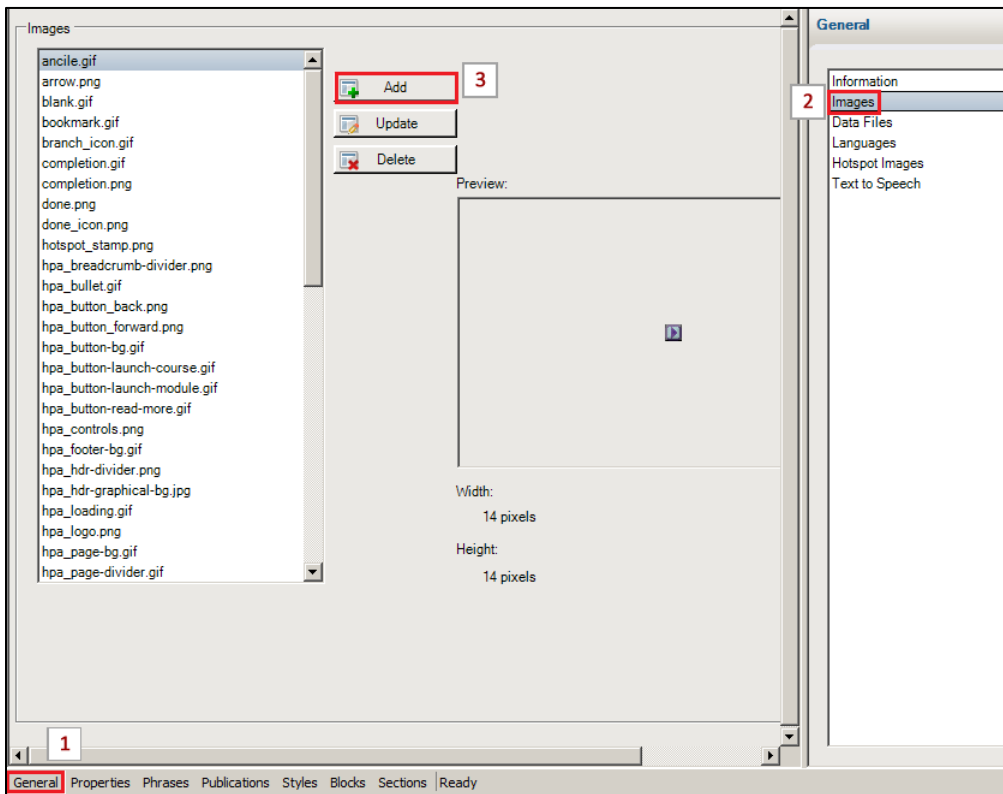
You can easily change the look and feel of courses by adding your logo. The logo appears in two places: Course and Documentation.

### Modifying the Course Logo

Before you can update the image on a course, you must first add the image to the general images group. To update the course logo, perform the following tasks in your template, ART5\_CompanyName\_Template\_1-0.udt:

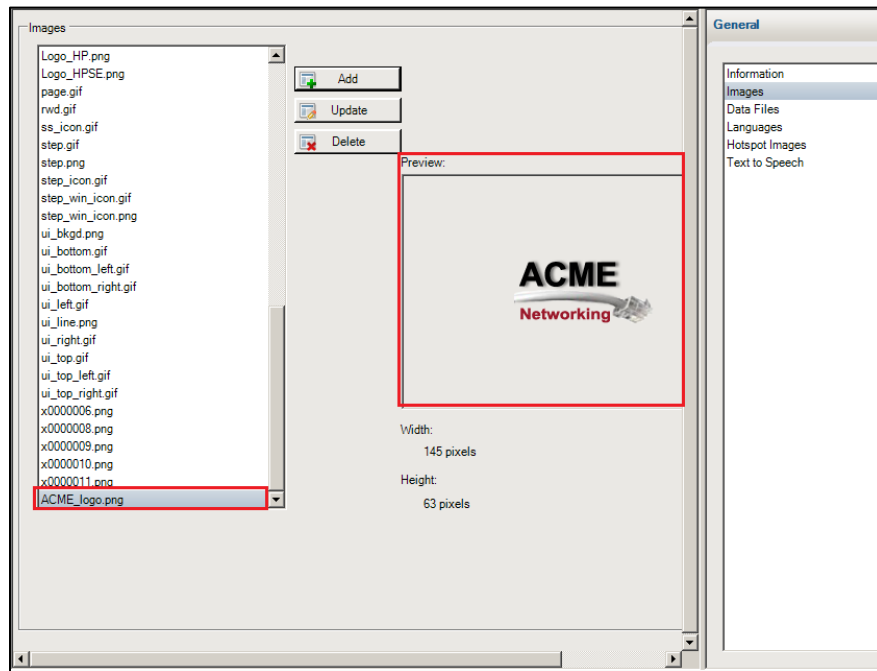
#### Adding Image to the Images Group

1. Open your template and navigate to the General tab>Images>Add button.



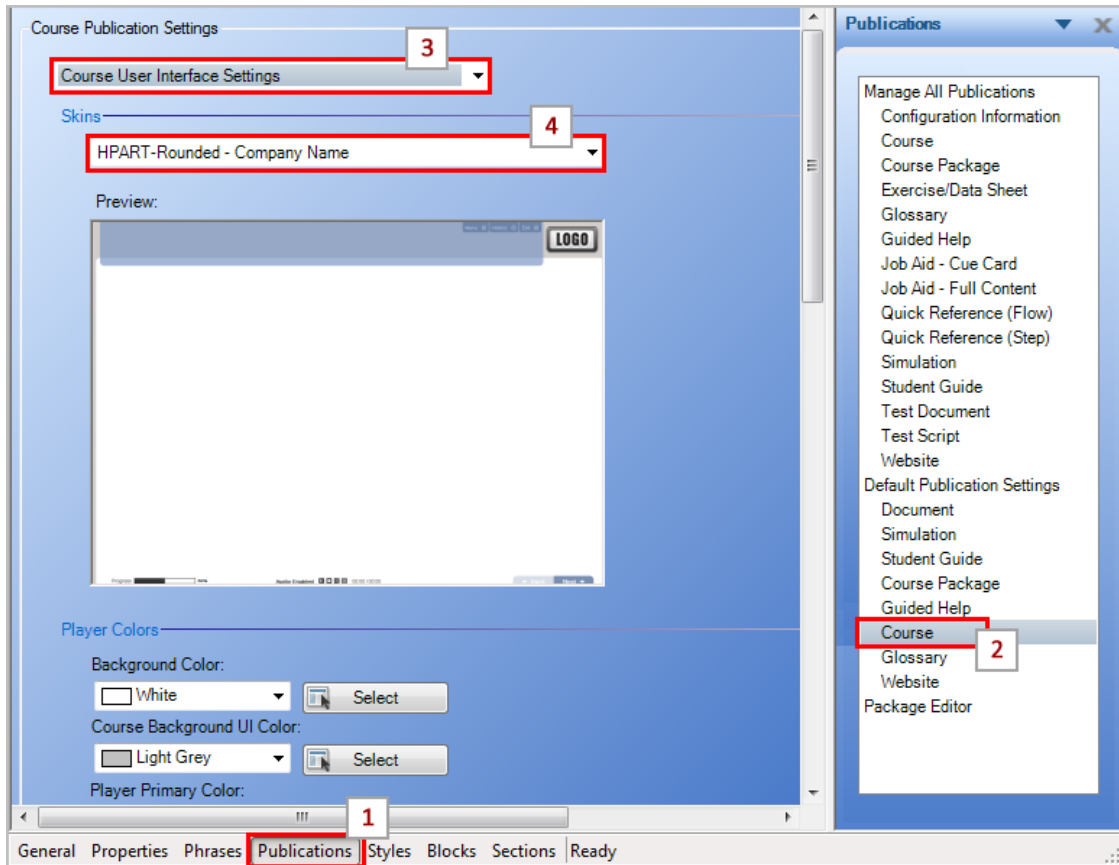
2. Navigate to the location of your company logo on your local or share drive and select the image. The image is added to the images list.

The optimal size is approximately 136x75 pixels.



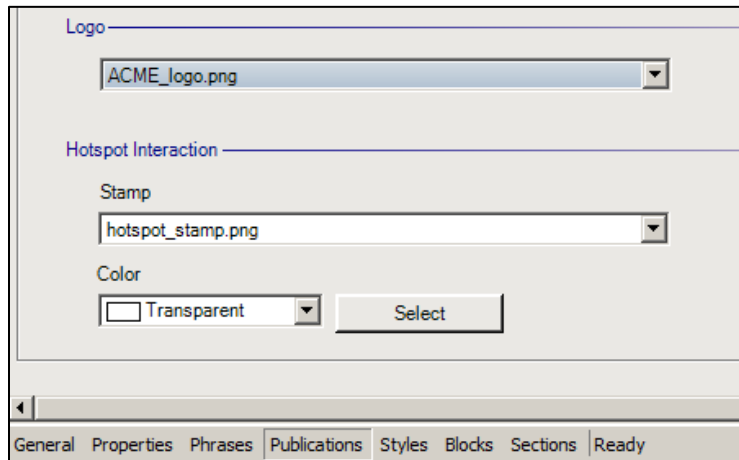
### Replacing the Course Logo

1. Navigate to the Publications tab and select the Default Publications Setting> Course>Course User Interface Settings>HPART-Rounded - Company Name.





2. Scroll down to the bottom of the page to the Logo section. From the Logo drop-down, select your image.

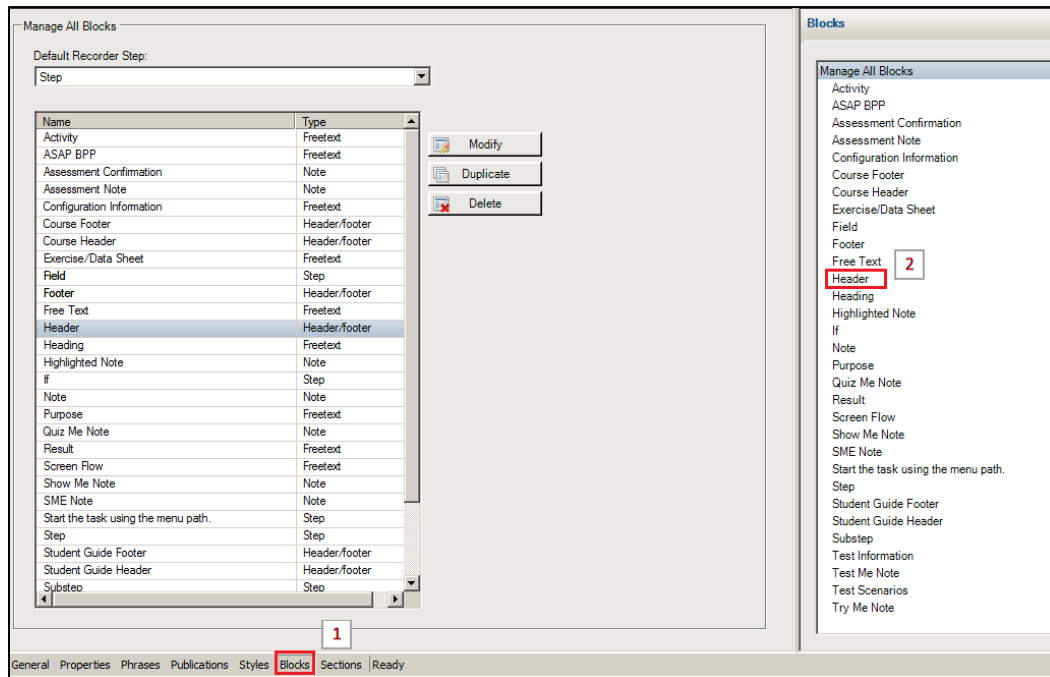


**Note:** The Preview window in the template does not display the new logo. To view the logo, you must preview or publish an eLearning course file.

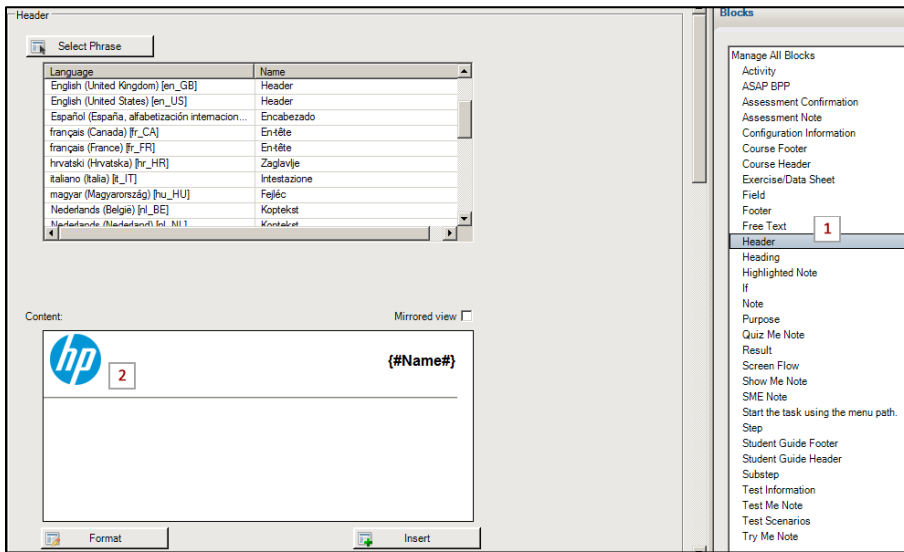
## Modifying the Document Logo

Updating the logo for documents is also easy but needs to be done separately.

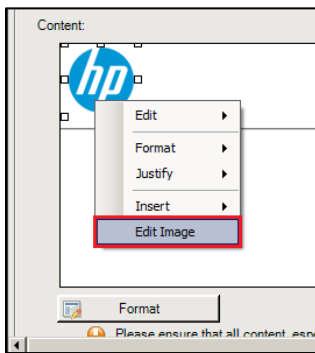
1. Open your template and navigate to Blocks tab>Header.



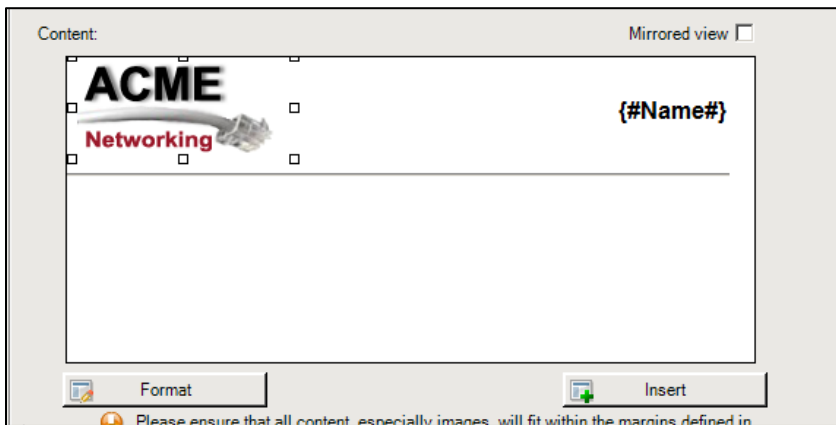
2. In the Content section, right-click the HP logo.



3. Click Edit Image.



4. Browse to the location of your company logo on your local or share drive and select the image.
5. Click Open.
6. Click Insert.

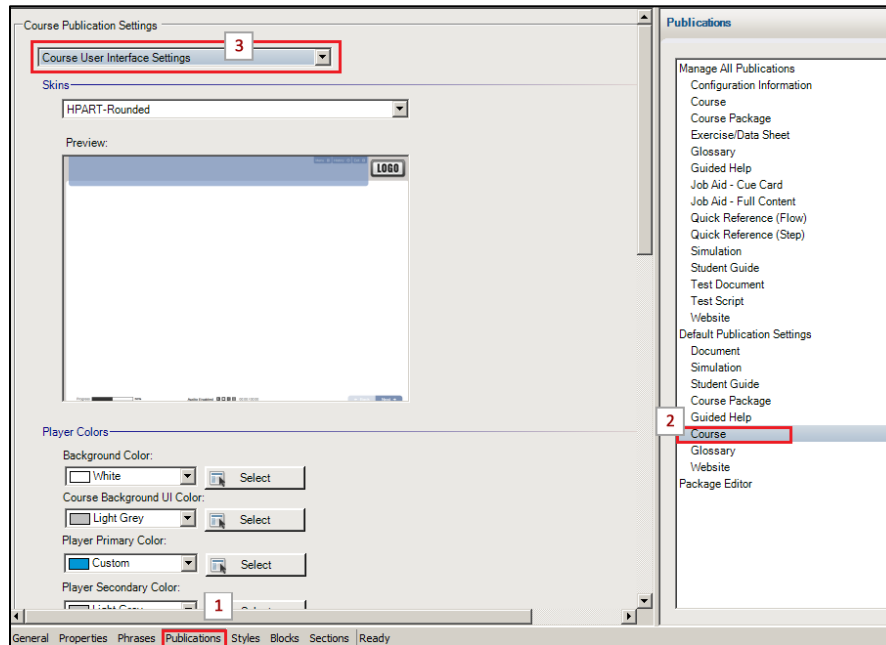


7. Save the template. ART documents now display the new logo in the header.

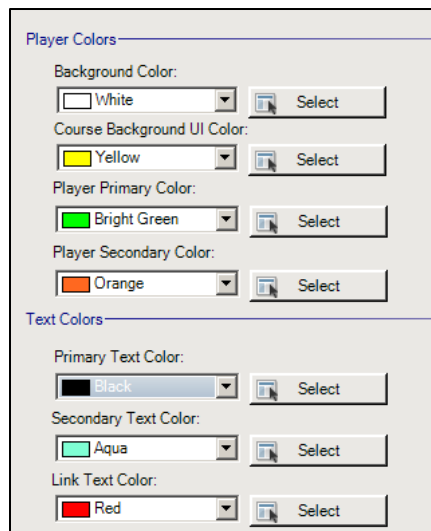
## Customizing the Course Branding

### Updating Course Banner and Text Colors

1. Open your template and navigate to the Publications tab>Default Publications Setting>Course>Course User Interface Settings.



2. Use the Course User Interface player and text colors to customize the course branding.
3. Use the illustrations below to identify the areas you want to change.





1	White	Background Color: Main stage
2	Yellow	Course Background UI Color: Frame around the entire course
3	Green	Player Primary Color: Top and bottom banners
4	Orange	Player Secondary Color: Top page banner, Simulation buttons, and Navigation buttons
5	Black	Primary Text Color: Progress bar text, Navigation button text, Simulation button text
6	Aqua	Secondary Text Color: All hover text

**Note:** If you are using the HPART-Rounded skin, the following elements are controlled using the cascading style sheet (.css) files.

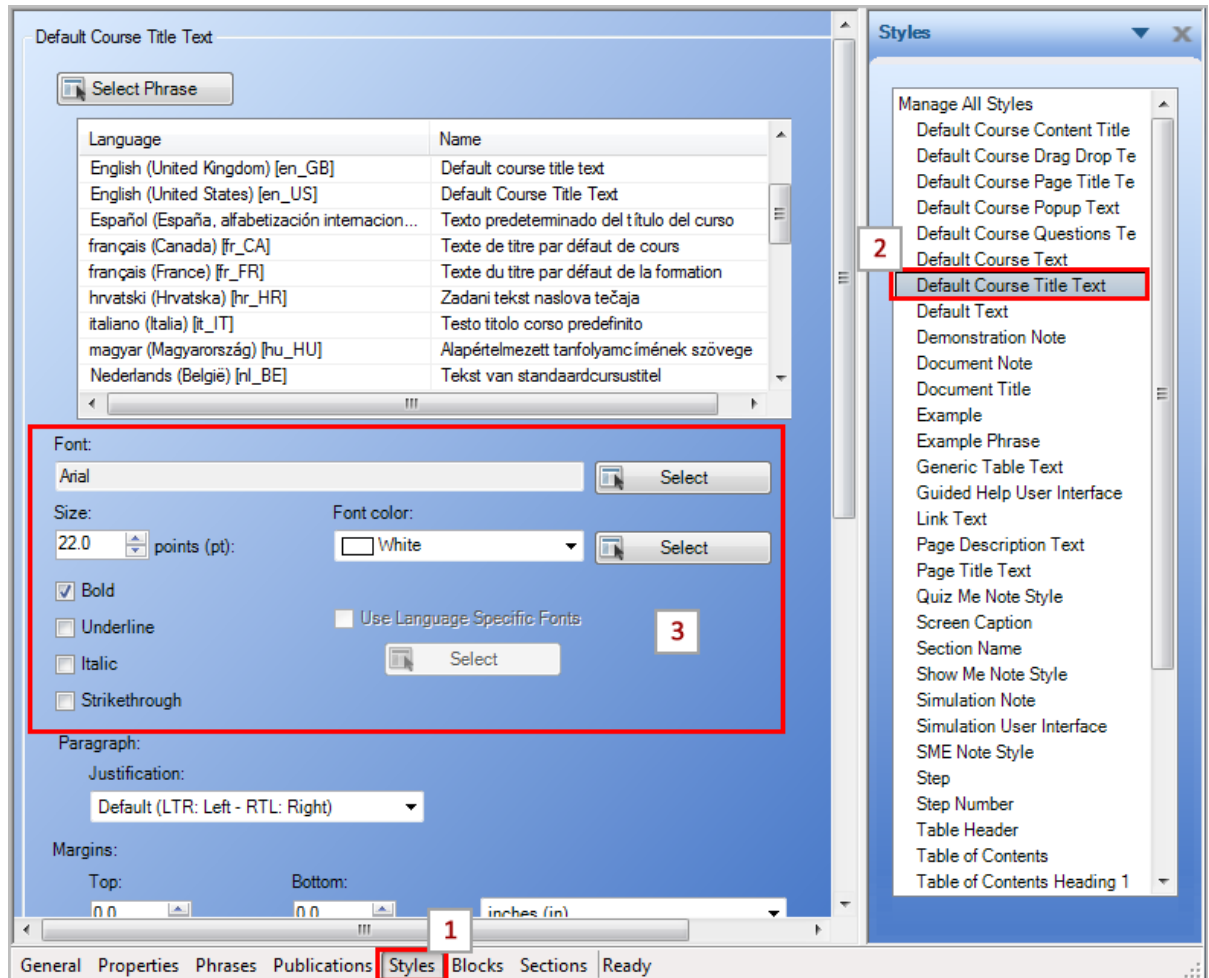
- Back and Next navigation buttons
- Simulation launch buttons (Show Me/Try Me)
- Assessment Continue and Assessment Results buttons
- Pop-up window title bar

Refer to the Updating the Custom Course Skin section for more information.

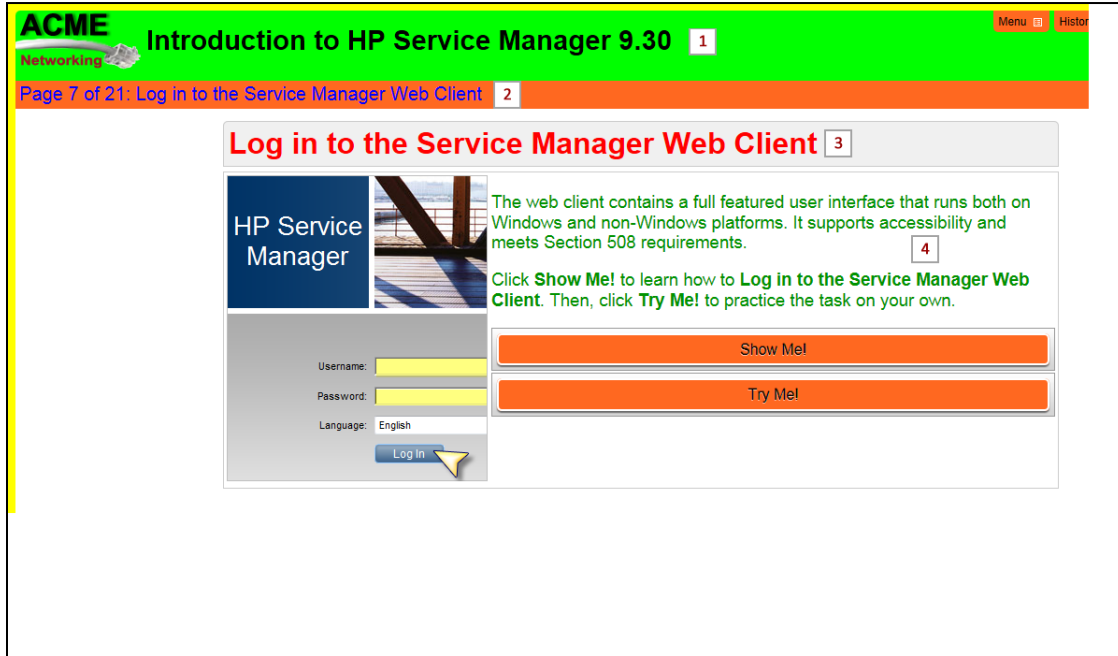
## Updating Course Text Styles

You manage course styles within the template Styles tab. You can use several styles to customize the look of your HP ART course. Follow the steps below to locate and update a course style:

1. Open your template and navigate to the Styles tab.
2. Select the desired style.
3. Update the style attributes such as font, size, and color.

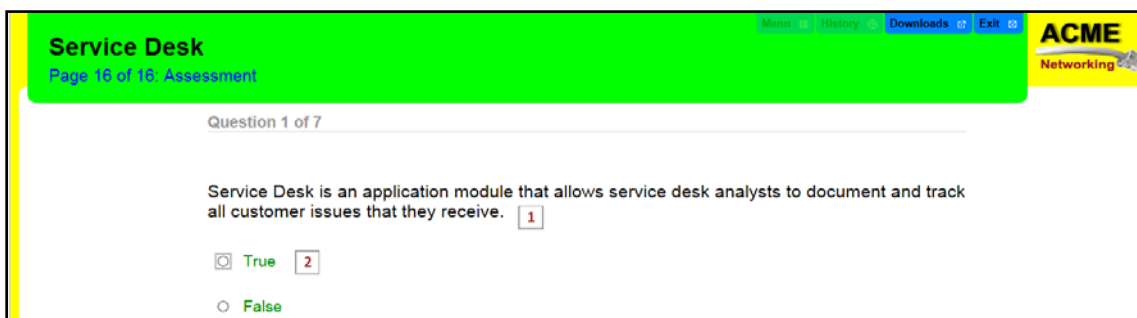


Use the illustration below to identify the course page styles.



1	Black	Default Course Title Text
2	Blue	Default Course Page Title Text
3	Red	Default Course Content Title Text
4	Green	Default Course Text

Use the illustration below to identify the assessment page styles.



1	Black	Default Course Question Text
2	Green	Default Course Text

## Updating the HPART-Rounded Course Skin

If you are using the custom HPART-Rounded skin, customize the following course elements using the skin cascading style sheet (.css) files:

- Back and Next buttons (skin.css)
- Simulation Launch buttons (content.css)
- Assessment Continue and Assessment Results buttons (content.css)
- Pop-up window title bar (content.css)

### Updating Next and Back Navigation Button Color

To update the color of the Next and Back navigation buttons, perform these steps to edit the skin.css file:

1. Using the Windows Start menu, navigate to HP Adoption Readiness Tool Resources.
2. Navigate to the skins>Course>custom>HPART-Rounded - Company Name>skin folder.
3. Open the skin.css file with an editor such as Notepad++.
4. Locate `div#nextBtn` and `div#backBtn` in the nav/aux section and update the hexadecimal strings for the background to specify the color. For example, the hex value for HP blue is #0197D6, white is #FFFFFF, and black is #000000.

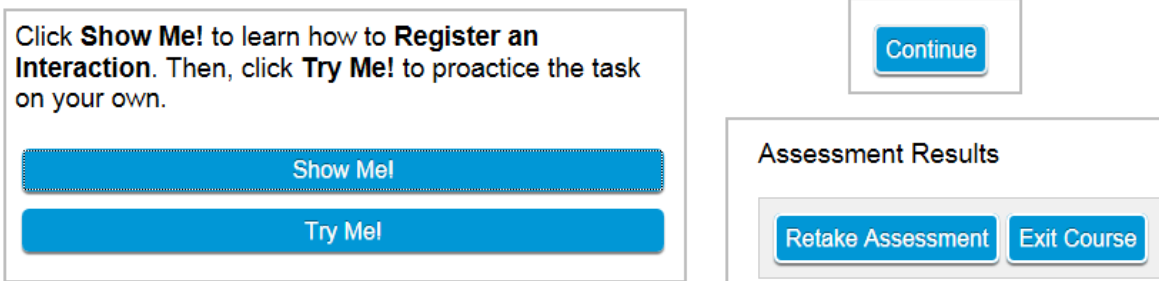
```
div#nextBtn
{
    height:35px;
    border-radius:0 10px 0 0;
    background:#0197D6;
    -webkit-border-radius: 0 10px 0 0;
    -moz-border-radius: 0 10px 0 0;
    behavior: url('skin/PIE.htc');
    *behavior:none;
}
```

```
div#backBtn
{
    margin-left:0px;
    height: 35px;
    background:#0197D6;
    border-radius:10px 0 0 0;
    -webkit-border-radius: 10px 0 0 0;
    -moz-border-radius: 10px 0 0 0;
    behavior: url('skin/PIE.htc');
    *behavior:none;
}
```

5. Save and close the `skin.css` file.
6. Publish your test course to review skin updates.

### Updating the Simulation Launch, Continue, and Assessment Results Button Color

To update the color of the simulation launch buttons and the Continue button in the assessment and Assessment Results buttons, perform these steps to edit the `content.css` file:



1. Using the Windows Start menu, navigate to HP Adoption Readiness Tool Resources.
2. Navigate to the skins>Course>custom>HPART-Rounded – Company Name>skin folder.
3. Open the `content.css` file with an editor such as Notepad++.  
**Note:** The `content.css` file and `skin.css` file are in the same location.
4. To update the color of the simulation launch buttons, locate `div.choice input[type=button]` in the Assessment section and update the hexadecimal strings for the background to specify the color. For example, the hex value for HP blue is #0197D6, white is #FFFFFF, and black is #000000.

```
div.choice input[type=button]
{
    border:2px none #fff;
    padding:6px;
    font-size:12pt;
    width:450px;
    -webkit-border-radius: 5px;
    -moz-border-radius: 5px;
    border-radius: 5px;
    -webkit-border-radius: 7px;
    -moz-box-shadow: 0 2px 2px rgba(0, 0, 0, 0.5);
    -webkit-box-shadow: 0 2px 2px rgba(0, 0, 0, 0.5);
    text-shadow: rgba(255,255,255,0.6) 0 1px, rgba(0,0,0,0.4) 0 -1px;
    background: #0197D6;
}
```



- To update the color of the Continue button in the assessment, locate `div#assessmentButtons input[type=button]` in the Assessment section and update the background hexadecimal color.

```
div#assessmentButtons input[type=button]
{
    border:2px solid #ededed;
    font-size:12pt;
    -webkit-border-radius: 5px;
    -moz-border-radius: 5px;
    border-radius: 5px;
    -webkit-border-radius: 7px;
    -moz-box-shadow: 0 2px 2px rgba(0, 0, 0, 0.5);
    -webkit-box-shadow: 0 2px 2px rgba(0, 0, 0, 0.5);
    box-shadow: 0 2px 2px rgba(0, 0, 0, 0.5);
    text-shadow: raba(255,255,255,0.6) 0 1px, rgba(0,0,0,0.4) 0 -1px;
    background: #0197d6;
}
```

- To update the color of the Assessment Results buttons, locate `div#assessmentSummaryButtons input[type=button]` in the Assessment Summary section and update the background hexadecimal color.

```
div#assessmentSummaryButtons input[type=button]
{
    border:2px solid #fff;
    font-size:12pt;
    -webkit-border-radius: 5px;
    -moz-border-radius: 5px;
    border-radius: 5px;
    -webkit-border-radius: 7px;
    -moz-box-shadow: 0 2px 2px rgba(0, 0, 0, 0.5);
    -webkit-box-shadow: 0 2px 2px rgba(0, 0, 0, 0.5);
    box-shadow: 0 2px 2px rgba(0, 0, 0, 0.5);
    text-shadow: raba(255,255,255,0.6) 0 1px, rgba(0,0,0,0.4) 0 -1px;
    background: #0197d6;
}
```

- Save and close the `content.css` file.
- Publish your course to review skin updates.

### Updating the Color of the Hotspot Window Title Bar

To update the color of the hotspot window header, perform these steps to edit the `content.css` file:

- Using the Windows Start menu, navigate to HP Adoption Readiness Tool Resources.
- Navigate to the `skins>Course>custom>HPART-Rounded-Customer>skin` folder.
- Open the `content.css` file with an editor such as Notepad++.

4. Locate `div.titleBarPopup` in the Content section and update the hexadecimal strings for the background to specify the color. For example, the hex value for HP blue is `#0197D6`, white is `#FFFFFF`, and black is `#000000`.

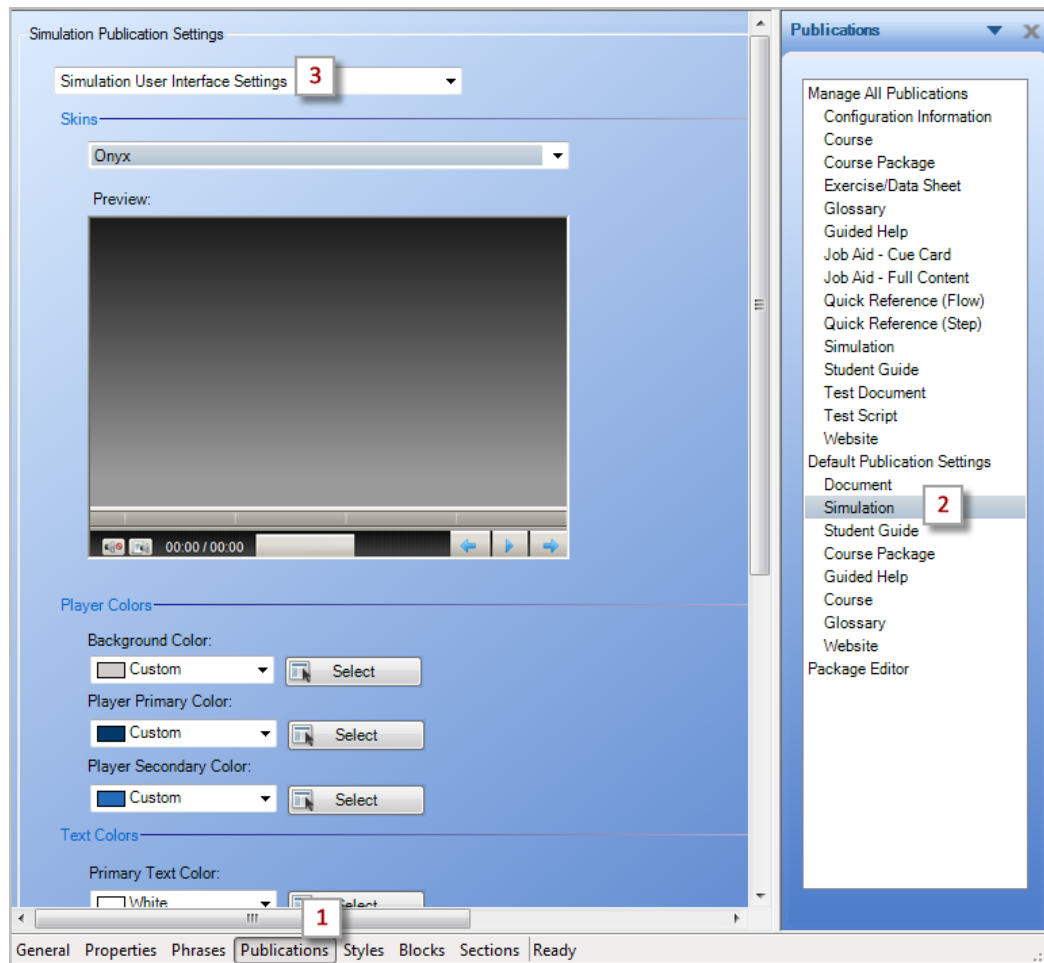
```
div.titleBarPopup
{
    position:relative;
    background-color:#0095D5;
}
div.popupContent
{
    position:relative;
    background:#fff;
    margin:5px 5px 10px 5px;
    text-align:left;
    padding-left:5px;
    overflow:auto;
}
div.closePopup
{
    position: absolute;
    right: 5px;
    background-color:#0095D5;
}
div.titlePopup
{
    position: absolute;
    margin:1px 50px 5px 5px;
    background-color:#0095D5;
}
```

9. Save and close the `content.css` file.
10. Publish your course to review skin updates.

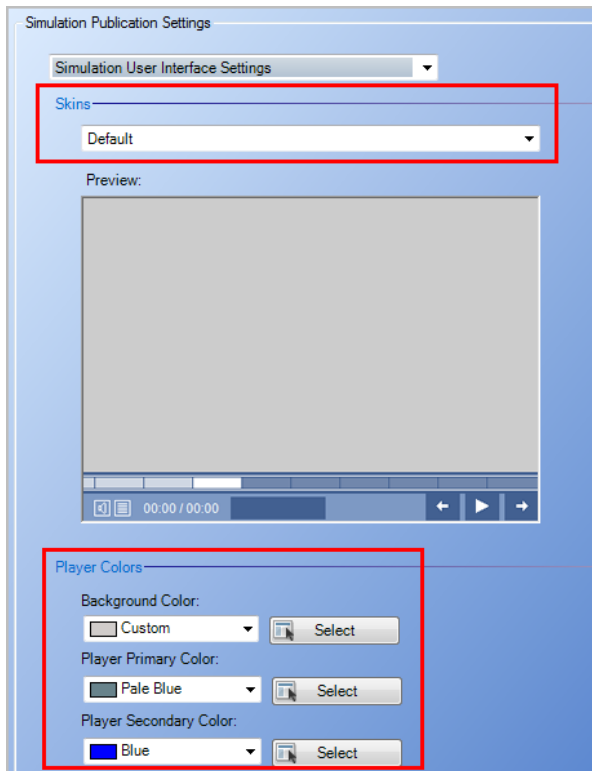
## Updating the Simulation Skin

To customize the color of the simulation window, perform the following steps in your template:

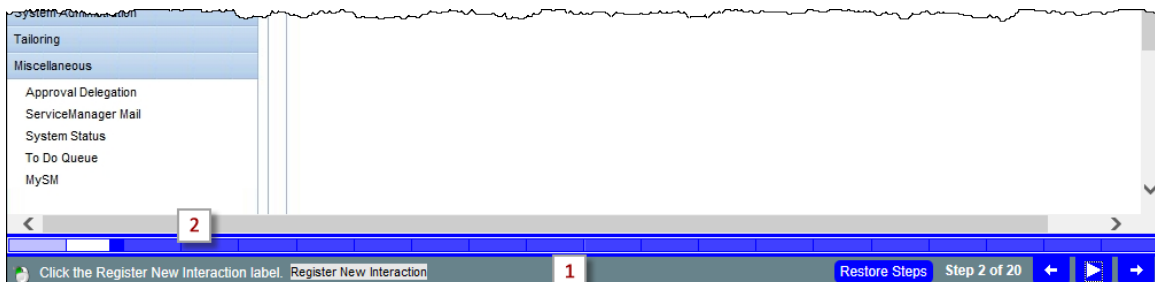
1. Open your template and navigate to the Publications tabs and select the Default Publications Setting>Simulation.
2. From the Simulation Publication Settings drop-down list, select Simulation User Interface Settings.



3. If you would like a different look for your simulation window, you can select one of the available skins from the Skins drop-down list.
4. Update the Player Colors settings to match your branding scheme.



	Custom	Background Color: Main stage (only shows in blank document)
1	Pale Blue	Player Primary Color: Bottom of navigation bar
2	Blue	Player Secondary Color: Progress bar and navigation buttons



5. Save and close the template file.

**Note:** The Preview window in the template does not display the updated colors. To view the updated skin, you must preview or publish a simulation.

## Modifying the Launch Windows

The launch window opens when you launch a simulation or course. You can modify the graphics, colors, and text of the course and simulation launch windows. You should only modify the styles covered in this guide if you are an advanced ART user.

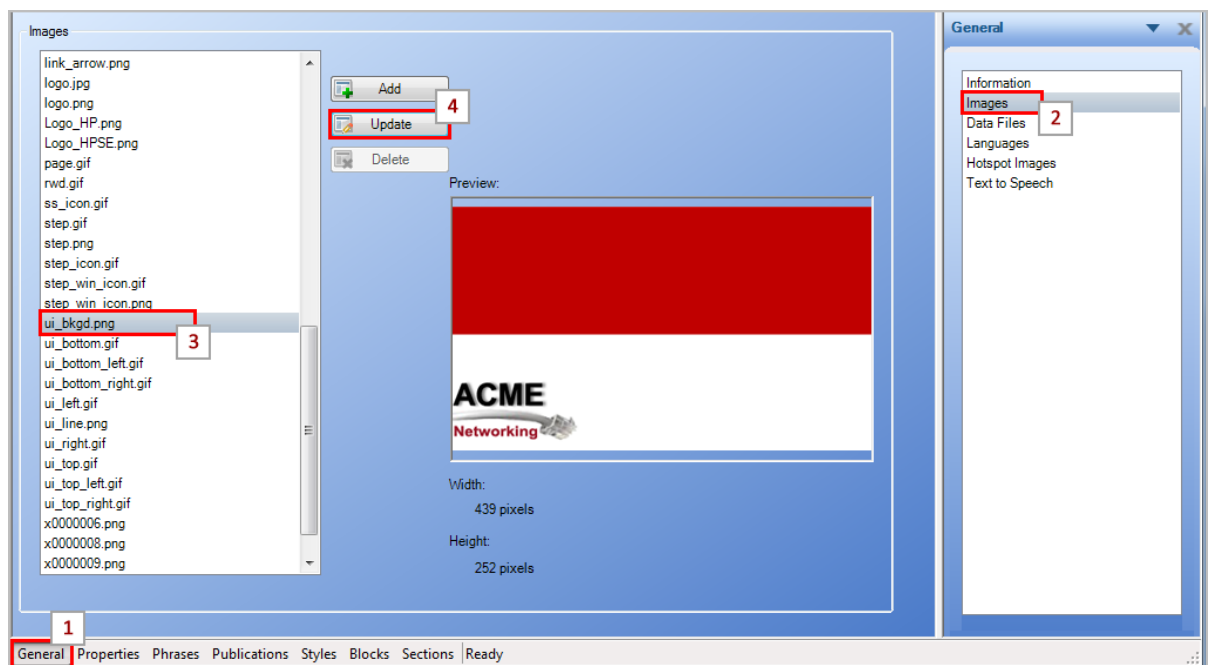
The `ui_bkgd.png` image appears in the upper portion of the launch window. The lower portion of the window is reserved for text that is populated during the publishing process.

## Modifying the Launch Window Background

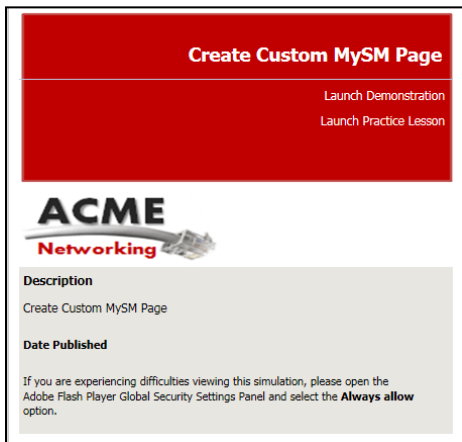
To modify the image in the course and simulation launch window, perform these steps:

1. Create the desired image for the launch page to 439x252 pixels and save it with the file name `ui_bkgd.png`.
2. Open your template and navigate to General tab>Images>`ui_bkgd.png`.
3. Click Update.
4. Select the image file from your local or share drive.

**Note:** You should set your background splash image to 439x252 pixels.



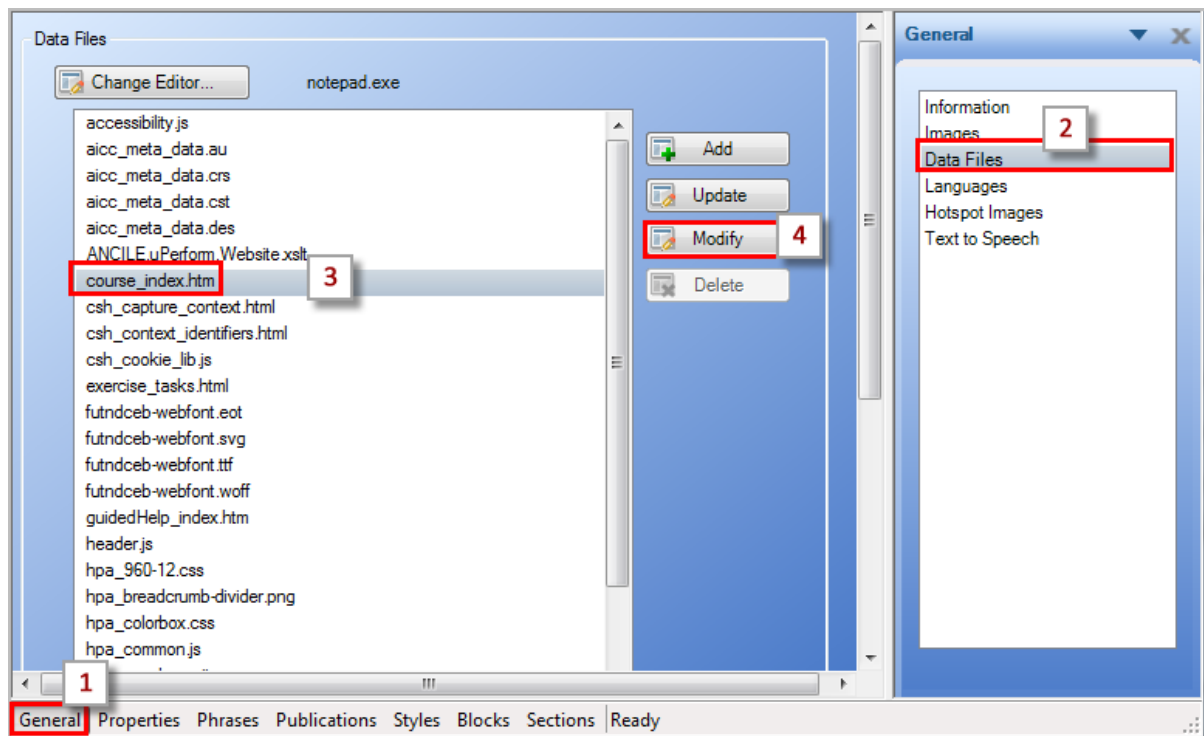
This is an example of an updated launch window.



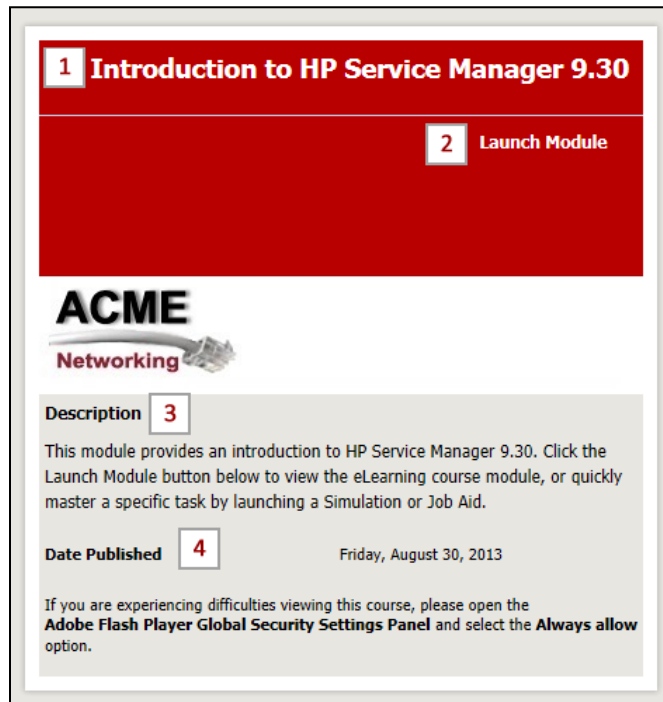
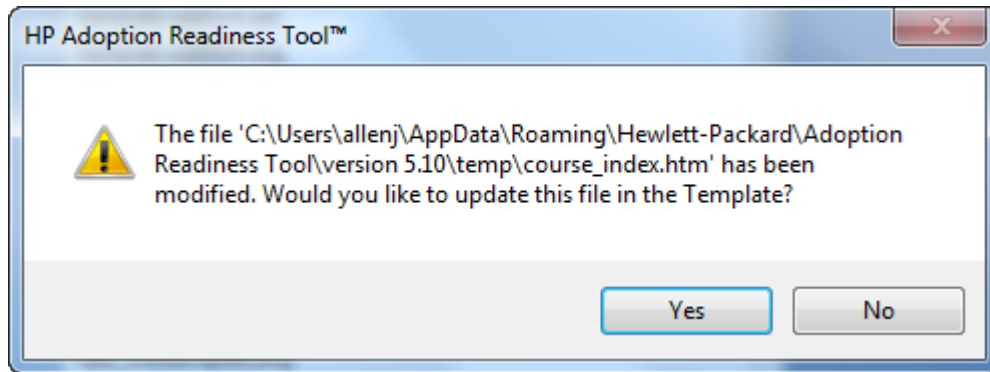
## Modifying the Course Launch Window Text

To modify the course launch window text, perform these steps:

1. Open your template and navigate to General tab>Data Files>course\_index.htm.
2. Click Modify. The file opens in an editor such as Notepad.



3. Use the illustration below to locate the area within the launch window HTML code that you would like to modify. The data files use hexadecimal strings to specify color in HTML files. For example, the hex value for white is #FFFFFF and for black is #000000.
4. Close the HTML editor and select Yes when prompted to update the file.



**Note:** Only modify the items identified below if you are an advanced ART user. When finished, save the file.

<div style="border: 1px solid black; width: 20px; height: 20px; display: flex; align-items: center; justify-content: center; margin: 0 auto;">1</div>	<pre>&lt;span id="title" style="font-weight: bold; font-size: 14pt; color: #FFFFFF; font-family: Tahoma; margin-right: 10px;"&gt;&lt;@Title@&lt;/span&gt;</pre>	
	<pre>&lt;div id="container"&gt;   &lt;table id="root_table" border="0" cellpadding="0" cellspacing="0" width="389"&gt;     &lt;tr style="height: 20px"&gt;       &lt;td style="width: 389px; background-image: url(assets/img/ui_top.gif); background-repeat: repeat-x"&gt;&lt;/td&gt;     &lt;/tr&gt;     &lt;tr&gt;       &lt;td style="width: 349px"&gt;         &lt;table border="0" cellpadding="0" cellspacing="0" width="349"&gt;           &lt;tr&gt;             &lt;td style="background-image: url(assets/img/ui_bkgd.png); height: 252px; background-repeat: no-repeat;"&gt;               &lt;table style="height: 252px; border="0" cellpadding="0" cellspacing="0"&gt;                 &lt;tr id="rowLessonName" style="height: 40px; vertical-align: bottom;"&gt;                   &lt;td align="right" valign="center"&gt;                     &lt;span id="title" style="font-weight: bold; font-size: 14pt; color: #FFFFFF; font-fam                   &lt;/td&gt;                 &lt;/tr&gt;               &lt;/table&gt;             &lt;/td&gt;           &lt;/tr&gt;         &lt;/table&gt;       &lt;/td&gt;     &lt;/tr&gt;   &lt;/table&gt;</pre>	
<div style="border: 1px solid black; width: 20px; height: 20px; display: flex; align-items: center; justify-content: center; margin: 0 auto;">2</div>	<pre>a:link, a:active, a:visited { font-family: Tahoma; font-size: 12px; color: #FFFFFF; font-weight: bold; text-decoration: none; } a:hover { color: #003366; text-decoration: underline; }</pre>	<pre>a:link, a:active, a:visited { font-family: Tahoma; font-size: 12px; color: #FFFFFF; font-weight: bold; text-decoration: none; } a:hover { color: #003366; text-decoration: underline; }</pre>

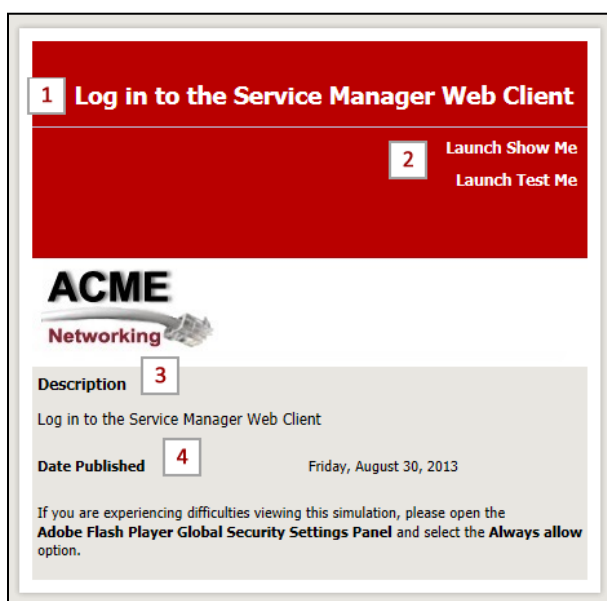


3	<pre>.infoboxText { font-family: Tahoma; font-size: 12px; color: #000000; }</pre>	<pre>.infoboxText { font-family: Tahoma; font-size: 12px; color: #000000; }</pre>
4	<pre>.footerText, .footerText a:link, .footerText a:active, .footerText a:visited { font-family: Tahoma; font-size: 11px; color: #000000; }</pre>	<pre>.footerText, .footerText a:link, .footerText a:active, .footerText a:visited { font-family: Tahoma; font-size: 11px; color: #000000; }</pre>

## Modifying the Simulation Launch Window Text

To modify the simulation launch window text, perform these steps:

1. Open your template and navigate to **General tab > Data Files > simulation\_index.htm**.
2. Click **Modify**. The file opens in an editor such as Notepad.
3. Use the illustration below to locate the area within the launch window HTML code that you would like to modify. The data files use hexadecimal strings to specify color in HTML files. For example, the hex value for white is `#FFFFFF` and for black is `#000000`.
4. Close the HTML editor and select **Yes** when prompted to update the file.



<b>1</b>	<code>&lt;div style="height: 47px; position: relative; vertical-align: bottom; overflow: hidden; text-overflow: ellipsis; font-weight: bold; font-size: 14pt; color: #FFFFFF; font-family: Tahoma, Verdana, Arial, Helvetica; "&gt;</code>
<div style="border: 1px solid black; padding: 5px;"> <pre style="font-family: monospace; font-size: small;"> &lt;div id="container"&gt;   &lt;table border="0" cellpadding="0" cellspacing="0" width="389"&gt;     &lt;tr style="height: 20px"&gt;       &lt;td style="width: 349px; background-image: url(assets/img/ui_top.gif); background-repeat: repeat-x"&gt;&lt;/td&gt;     &lt;/tr&gt;     &lt;tr&gt;       &lt;td&gt;         &lt;table border="0" cellpadding="0" cellspacing="0" width="349"&gt;           &lt;tr&gt;             &lt;td style="background-image: url(assets/img/ui_bkgd.png); height: 252px; background-repeat: no-repeat;"&gt;               &lt;table border="0" cellpadding="0" cellspacing="0" width="100%"&gt;                 &lt;tr id="rowLessonName" valign="bottom"&gt;                   &lt;td align="right"&gt;                     &lt;div style="height: 47px; position: relative; vertical-align: bottom; overflow: hidden; text-overflow: ellipsis; font-weight: bold; font-size: 14pt; color: #FFFFFF; font-family: Tahoma, Verdana, Arial, Helvetica; "&gt;                       &lt;div style="max-height: 47px; overflow: hidden; position: absolute; bottom: 0px; width: 100%; left: 0px; text-align: right;" title="@Title@"&gt;&lt;title@&amp;nbsp;&amp;nbsp;&amp;nbsp;&lt;/div&gt;                     &lt;/div&gt;                     &lt;div style="height: 13px;"&gt;&lt;img src="assets/img/ui_line.png" width="430px" height="1px"                     &lt;/div&gt;                   &lt;/td&gt;                 &lt;/tr&gt;               &lt;/table&gt;             &lt;/td&gt;           &lt;/tr&gt;         &lt;/table&gt;       &lt;/td&gt;     &lt;/tr&gt;   &lt;/table&gt;         </pre> </div>	

<p style="text-align: center;"><b>2</b></p>	<pre>a:link, a:active, a:visited  { font-family: Tahoma, Verdana, Arial, Helvetica;  font-size: 12px;  color: #FFFFFF;  font-weight: bold;  text-decoration: none;  }  a:hover  {</pre>	<pre>a:link, a:active, a:visited { font-family: Tahoma, Verdana, Arial, Helvetica; font-size: 12px; color: #FFFFFF; font-weight: bold; text-decoration: none; } a:hover {</pre>
<p style="text-align: center;"><b>3</b></p>	<pre>.infoboxText  { font-family: Tahoma;  font-size: 12px;  color: #000000;  }</pre>	<pre>.infoboxText { font-family: Tahoma; font-size: 12px; color: #000000; }</pre>

<div style="border: 1px solid black; width: 20px; height: 20px; display: inline-block; line-height: 20px;">4</div>	<pre>.footerText, .footerText a:link,  .footerText a:active,  .footerText a:visited  {  font-family: Tahoma;  font-size: 11px;  color: #000000;  }</pre>	<div style="border: 1px solid black; padding: 5px;"><pre>.footerText, .footerText a:link, .footerText a:active, .footerText a:visited { font-family: Tahoma; font-size: 11px; color: #000000; }</pre></div>
--------------------------------------------------------------------------------------------------------------------	--------------------------------------------------------------------------------------------------------------------------------------------------------------------------------------------------------------------------------------	---------------------------------------------------------------------------------------------------------------------------------------------------------------------------------------------------------------------------------------------

## Publishing the Course and Verifying the Changes

If you have existing content, the final step is to publish your new content so all template changes are incorporated. You also need to re-link recordings.

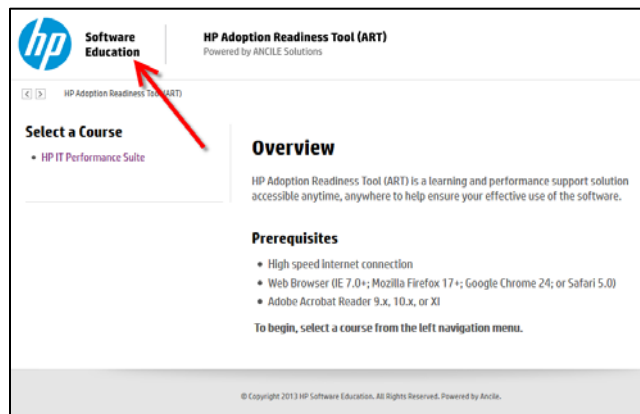
**Note:** Previewing content does not display all the template customizations; you should publish the content to ensure that you review all updates.

# Customizing the HP ART Website

You can easily update several areas in the HP ART website to give it a customized look.

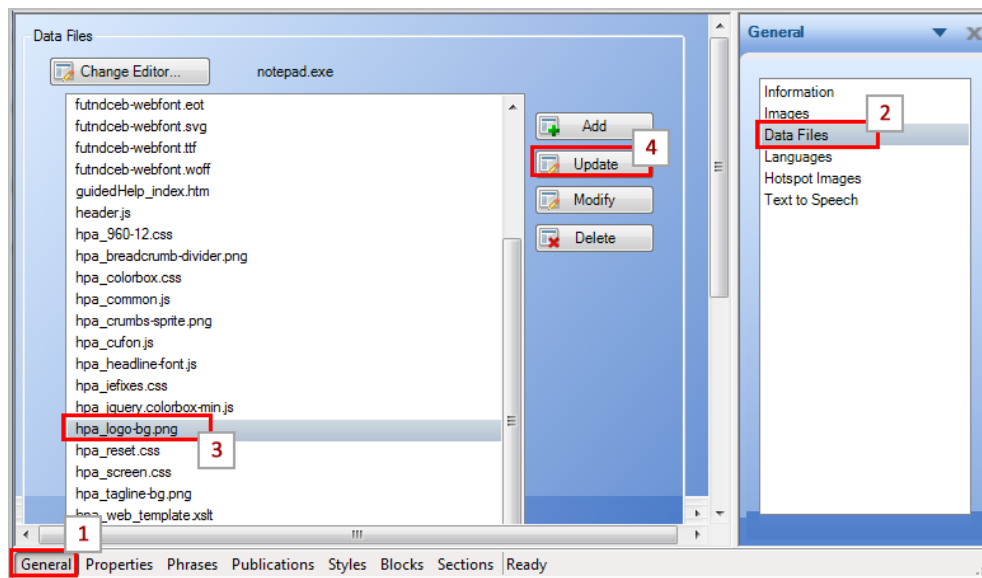
## Adding Your Logo to the Website

A company logo image is typically displayed in the upper left corner of the website and appears on all the launch pages.



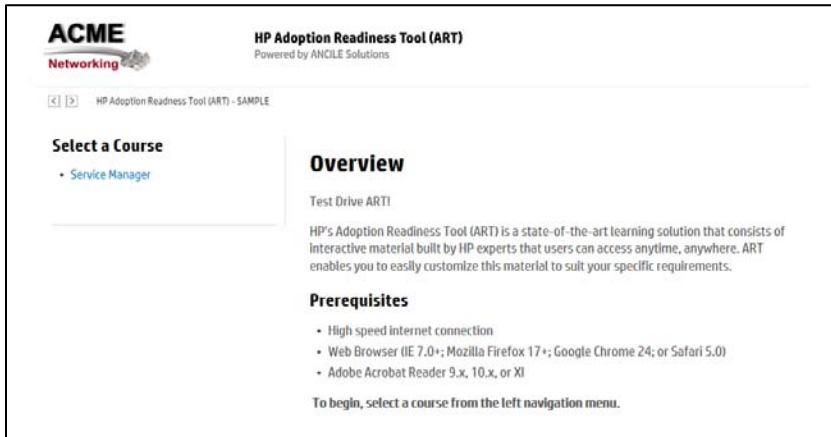
You can update the website with your company's logo to enhance your website. To modify the website logo, perform these steps:

1. Open your template and navigate to General tab>Data Files>hpa\_logo-bg.png >Update.



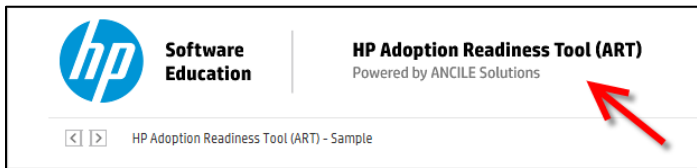
2. Navigate to the location of the company logo on your local or share drive and select the image. The recommended logo size is 220x74 pixels.

3. Save your template and republish the .uws file to view the updated website logo.



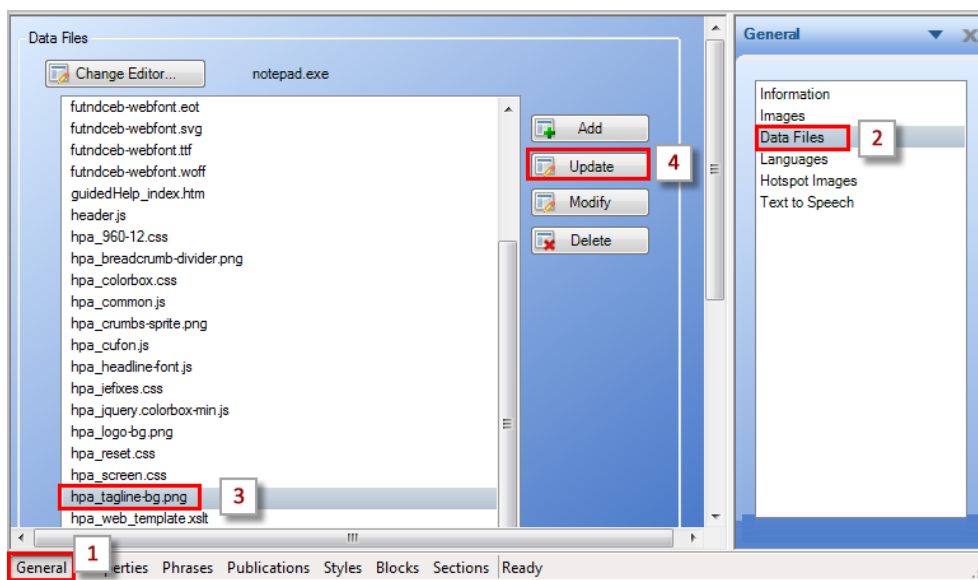
## Updating the HP ART Website Tagline

The HP ART tagline is an image and displays in the upper right of the website. It appears on all launch pages.



To modify the website tagline, perform these steps:

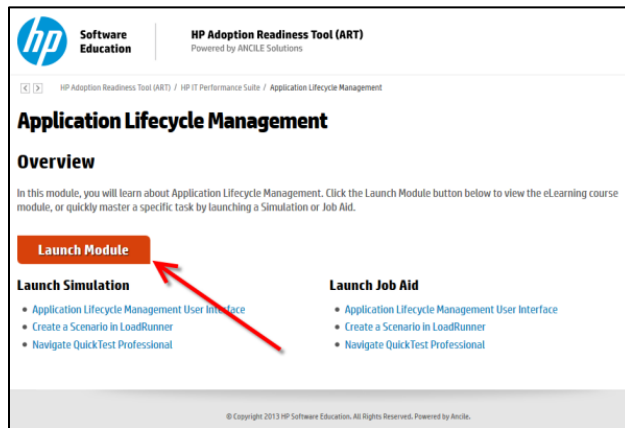
1. Open your template and navigate to General tab>Data Files>hpa\_tagline-bg.png.
2. Click Update.



3. Navigate to the location of the desired tagline on your local or share drive and select the image. The recommended image size is 220x74 pixels.
4. Save your template and republish the .uws file to view the updated website tagline.

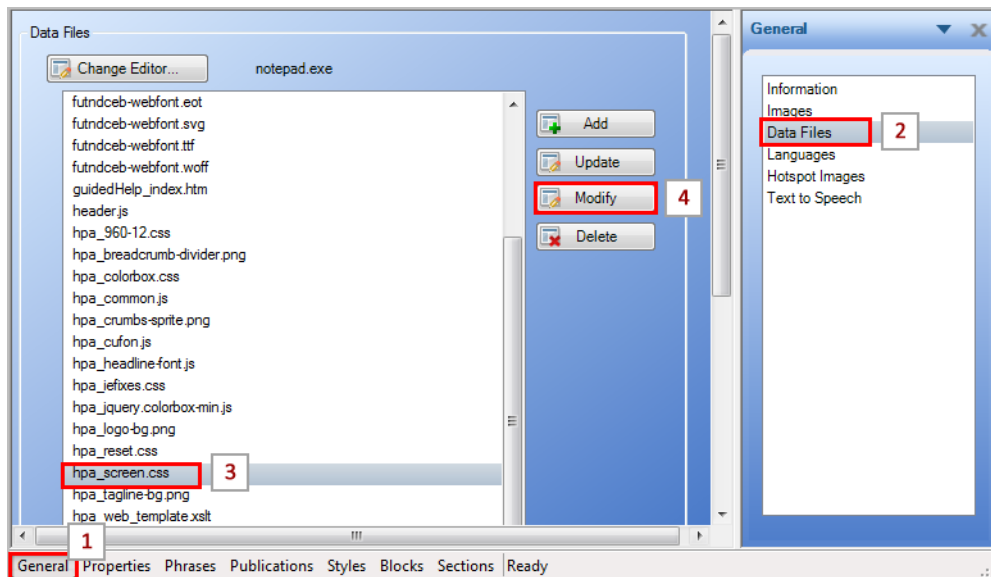
## Modifying the Website Launch Module Button Color

The Launch Module button displays on all module pages and is used to launch the associated HP ART course module.



To modify the color of the Launch button, perform these steps:

1. Open your template and navigate to General tab>Data Files>hpa\_screen.css.
2. Click Modify.



- The .css file opens in Notepad. You can use the Edit>Find feature to locate the code to update. To change the color of the Launch button, look for the string highlighted below:

```

width: 132px; height: 32px; margin-top: 10px;}a.button.launch-course
{ background: url(hpa_button-launch-course.gif) no-repeat; display:
block; text-indent: -9999px; width: 269px; height: 53px; margin:
10px auto;}#content-wrapper a.button.launch-module,#content-wrapper a.large-
button { font: normal 16pt/32pt "HP Simplified Bold", Arial, Helvetica, sans-serif;
color: #fff; background-color: #000000; display: block; text-align: center;
width: 200px; height: 32pt; border-radius: 0px 7px 0px 7px;
-moz-border-radius: 0px 7px 0px 7px; -webkit-border-radius: 0px 7px 0px 7px;
text-shadow: #000 1px 1px 1px;}#content-wrapper a.button.launch-module:hover,
#content-wrapper a.large-button:hover { background-color: #C1401A; text-

```

In this example, the background color has been changed to black (#000000).

- To change the hover color of the Launch button, look for the string highlighted below:

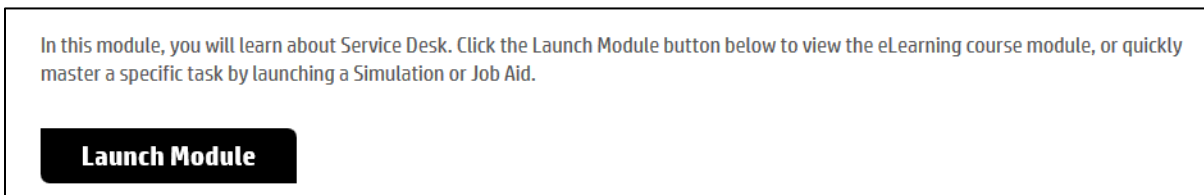
```

10px auto;}#content-wrapper a.button.launch-module,#content-wrapper a.large-
button { font: normal 16pt/32pt "HP Simplified Bold", Arial, Helvetica, sans-serif;
color: #fff; background-color: #000000; display: block; text-align: center;
width: 200px; height: 32pt; border-radius: 0px 7px 0px 7px;
-moz-border-radius: 0px 7px 0px 7px; -webkit-border-radius: 0px 7px 0px 7px;
text-shadow: #000 1px 1px 1px;}#content-wrapper a.button.launch-module:hover,
#content-wrapper a.large-button:hover { background-color: #ff0000; text-
decoration: none;}/* Misc */.col-50 { width: 50%; float: left;}#main-
content #main .wrapper body { background: transparent; min-width: 600px !
important; overflow: hidden;}

```

In this example, the color has been changed to red (#ff0000).

- Save the .css file and republish the .uws file to view the updated Module Launch buttons.



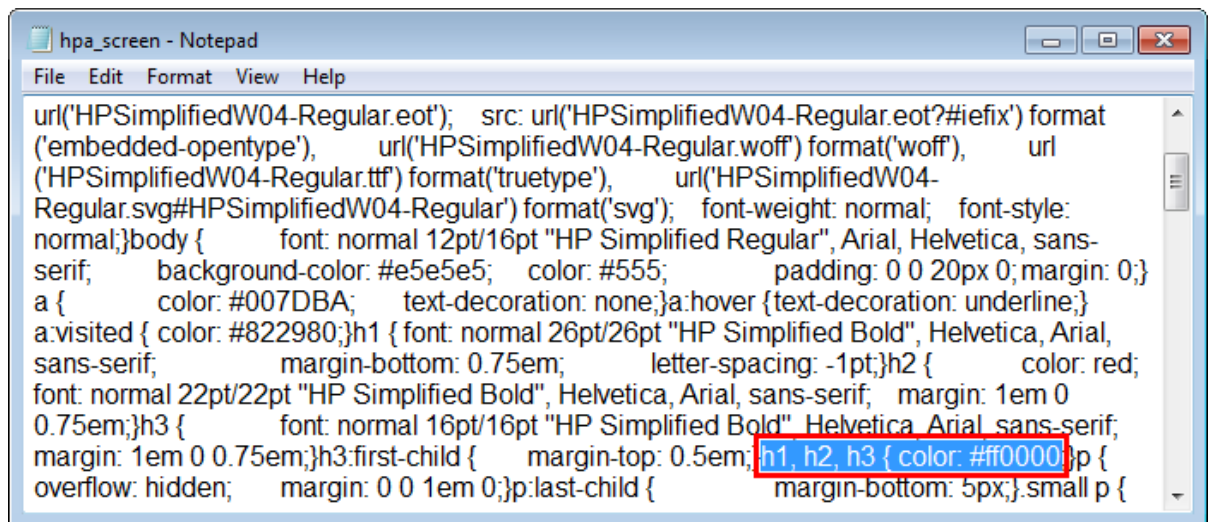


## Modifying the Website Text Font and Color

The font customizations for the website are also controlled in the `hpa_screen.css` file. To customize this file, ensure you are experienced in HTML/XML.

To modify the website header color and text font, perform these steps:

1. Open your template and navigate to General tab>Data Files> `hpa_screen.css`.
2. Click Modify.
3. To modify the header colors locate and update the H1, H2, and H3 tag to the desired hexadecimal color. You can use the Edit>Find feature to locate the code to update.

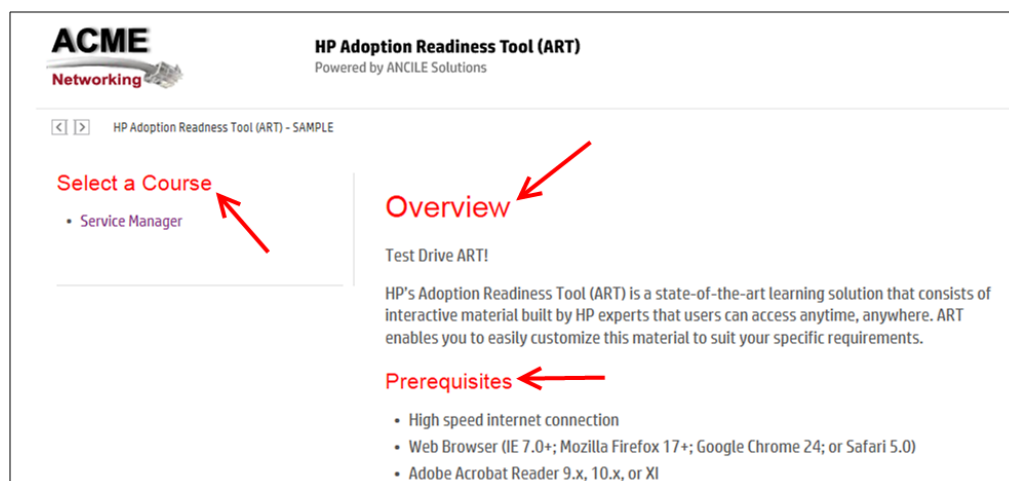


```

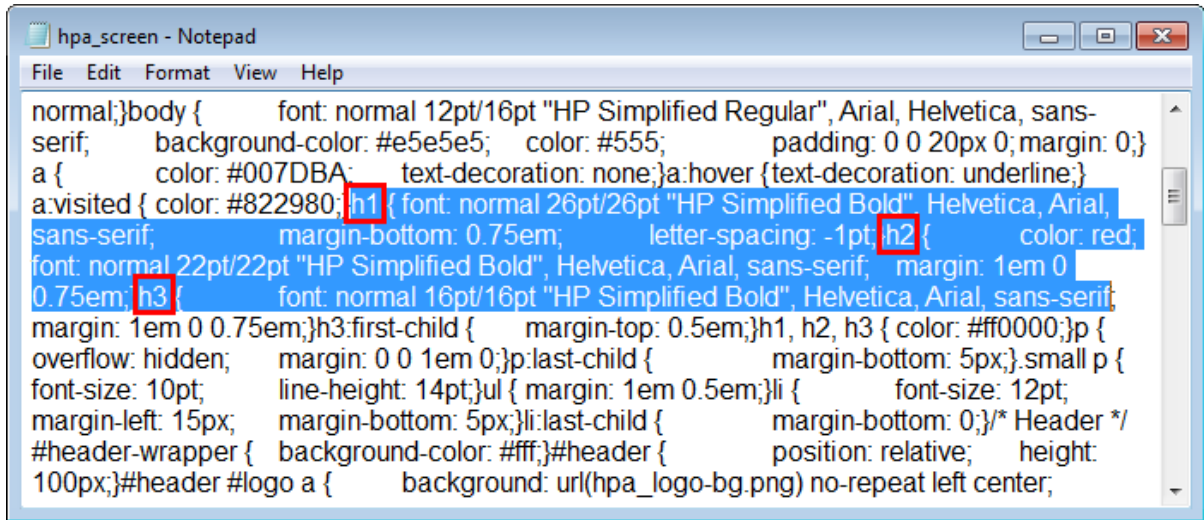
url('HPSimplifiedW04-Regular.eot'); src: url('HPSimplifiedW04-Regular.eot?#iefix') format
('embedded-opentype'), url('HPSimplifiedW04-Regular.woff') format('woff'), url
('HPSimplifiedW04-Regular.ttf') format('truetype'), url('HPSimplifiedW04-
Regular.svg#HPSimplifiedW04-Regular') format('svg'); font-weight: normal; font-style:
normal;}body { font: normal 12pt/16pt "HP Simplified Regular", Arial, Helvetica, sans-
serif; background-color: #e5e5e5; color: #555; padding: 0 0 20px 0; margin: 0;}
a { color: #007DBA; text-decoration: none;}a:hover {text-decoration: underline;}
a:visited { color: #822980;}h1 { font: normal 26pt/26pt "HP Simplified Bold", Helvetica, Arial,
sans-serif; margin-bottom: 0.75em; letter-spacing: -1pt;}h2 { color: red;
font: normal 22pt/22pt "HP Simplified Bold", Helvetica, Arial, sans-serif; margin: 1em 0
0.75em;}h3 { font: normal 16pt/16pt "HP Simplified Bold", Helvetica, Arial, sans-serif;
margin: 1em 0 0.75em;}h3:first-child { margin-top: 0.5em;}h1, h2, h3 { color: #ff0000;}p {
overflow: hidden; margin: 0 0 1em 0;}p:last-child { margin-bottom: 5px;}small p {

```

In this example, the color has been changed to red (`#ff0000`).



4. Use the H1, H2, and H3 font tags to adjust the style as desired.



```
hpa_screen - Notepad
File Edit Format View Help
normal;}body { font: normal 12pt/16pt "HP Simplified Regular", Arial, Helvetica, sans-
serif; background-color: #e5e5e5; color: #555; padding: 0 0 20px 0; margin: 0;}
a { color: #007DBA; text-decoration: none;}a:hover {text-decoration: underline;}
a:visited { color: #822980;}h1 { font: normal 26pt/26pt "HP Simplified Bold", Helvetica, Arial,
sans-serif; margin-bottom: 0.75em; letter-spacing: -1pt;}h2 { color: red;
font: normal 22pt/22pt "HP Simplified Bold", Helvetica, Arial, sans-serif; margin: 1em 0
0.75em;}h3 { font: normal 16pt/16pt "HP Simplified Bold", Helvetica, Arial, sans-serif;
margin: 1em 0 0.75em;}h3:first-child { margin-top: 0.5em;}h1, h2, h3 { color: #ff0000;}p {
overflow: hidden; margin: 0 0 1em 0;}p:last-child { margin-bottom: 5px;}small p {
font-size: 10pt; line-height: 14pt;}ul { margin: 1em 0.5em;}li { font-size: 12pt;
margin-left: 15px; margin-bottom: 5px;}li:last-child { margin-bottom: 0;}/* Header */
#header-wrapper { background-color: #fff;}#header { position: relative; height:
100px;}#header #logo a { background: url(hpa_logo-bg.png) no-repeat left center;
```