

How SteelTrace helps Developers Deliver Successful Code!

You are at the coalface in translating business strategy into technical vision and then into development. You want to write great code that delivers real commercial value to your organization. You need to be able to model how the system works and how it will deliver against the requirements of many stakeholders and their expectations. Your code must support all of the functionality and non-functional requirements of the system and manage any unavoidable trade-offs. You carry a lot of responsibility without always having the corresponding control and authority. Some of the key challenges you face are:

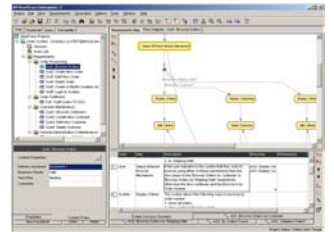
- Getting a clear description of the project, what it is required and in what environment. Changes also need to be easily detected and managed.
- You have to “sell” your architecture, its timelines and resource requirements as the best solution to the multiple needs established by the stakeholders. You need to build trusted relationships with the stakeholders.
- Leading other developers effectively to ensure that the true business and non-functional requirements are fulfilled by the final project, that they are able to see the value of the selected architecture and understand how to use it successfully.
- You need to be able to influence business strategy and explain existing system shortcomings or limitations.
- Your development needs to fulfill your corporate standards of best practice and quality and your planning needs to accurately estimate resources, delivery schedule and other milestones.
- You need to be able to close off your architecture and development cycle and get easy customer sign-off.

The clear understanding of scope and scale that SteelTrace gives equates to a more accurate definition of design and development required. It's easier to understand the business need, make realistic estimates, see touch points with other systems and manage project scope and schedule.

SteelTrace gives you:

EASY VISUALIZATION OF REQUIREMENTS STEPS

SteelTrace effectively captures and clearly documents all system requirements. SteelTrace's structured capture and definition of requirements and intuitive flow-charting illustrates all of the dependencies and alternate flow pertaining to the project, making it easy for you to visualize the solution and to deliver great code that works.



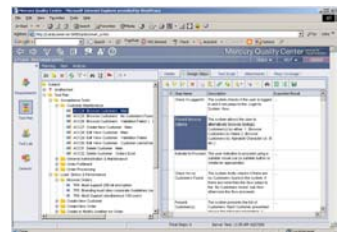
NON-FUNCTIONAL REQUIREMENT SPECIFICATION

As a Developer, you need a project view that goes beyond the functional, performance and reliability needs of the business user. You need to be able specify and manager project attributes including performance, reliability, distribution, infrastructure, etc.

SteelTrace allows you to assign non-functional requirements throughout the project to any requirement, element, branch etc. This gives you the power to understand more about, and prepare for, the operating environment in which the code must work.

ABILITY TO ADD CUSTOM FIELDS TO ANY PROJECT ELEMENT TO ENRICH PROJECT DATA AND MANAGEMENT

SteelTrace's structured approach also means that you can create Custom Properties within each requirement, package and project, dramatically increasing the flexibility of the project data to hold data specific to the needs of different roles. This means that information specific to domain, role, activity, etc can be used to enrich the project data (e.g. scalability, distribution, infrastructure, distribution, etc.). The project can be sorted and searched on the basis of any of this custom data or any class or category of requirements (i.e. high-risk, completed, etc.).



INTEGRATION WITH ALL MAJOR TEST TOOLS, MS PROJECT AND DEVELOPMENT ENVIRONMENTS



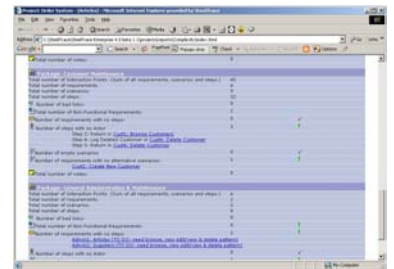
SteelTrace's integrations with MS Project and all of the standard AD tools, means that your project data can also be seamlessly exported intact for other uses. Multiple export formats can be used including CSV files and XML. SteelTrace also integrates smoothly with all leading Testing tools (e.g. Mercury Test Director and Compuware QA Center), in some cases bi-directionally. This makes it easy for you to map your activities with those of test, radically reducing risk and improving quality. SteelTrace's full integration with all standard testing and development tools ensures that ALL requirements are properly mapped to the test and development environments.

All exports, whether to other systems or for documents and reports, carry related links, branches and artifacts ensuring complete coverage of project elements.

AUTOMATED PRE-CANNED AND CUSTOMISABLE REPORTS IN ANY FORMAT FOR FULL PROJECT ANALYSIS



With SteelTrace, you can easily communicate project-related documents and analysis to all stakeholders in the way that suits each best. SteelTrace's full suite of pre-canned reports can generate a complete document set for the project, analyzed, parsed and sliced based on specific metrics or domain information of interest. These reports can also be customized to reflect your audience. Whether for progress reports or early-warning alerts, this gives you the ability to easily report on any aspect of the project, real-time, using current data.

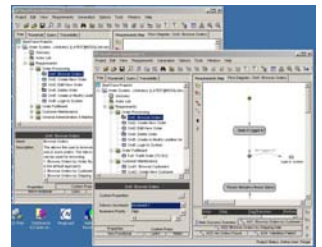


SUCCESSFUL MANAGEMENT OF THE DEVELOPMENT PROCESS THROUGH NOTIFICATION AND COLLABORATION



SteelTrace is the ultimate collaboration tool. You know that your team is working work on the most current version of the project every time, and have all interchanges recorded and accurately tracked. You, and others, can even work off-line with full system functionality and can merge with the main project in a fully controlled way when back on-line.

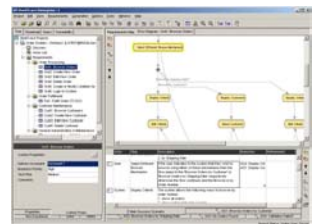
With SteelTrace, you can mark the area that you are working on, so that you are immediately notified of any changes. This gives you a real-time alert of the risk of re-work or significant change. You will also be notified of changes to other parts of the project that may have a knock-on effect on the aspect of concern to you.



STANDARD STRUCTURE FOR ALL PROJECTS AND OUTPUTS



SteelTrace offers a standard structure for all projects and its associated documents and reports. This common structure and pre-canned project and document templates make all projects easier to understand and ensures that outputs reflect corporate standards and processes. This makes it easier for you as a developer working on successive projects – the structure and logical flow accelerate your understanding of the project scope and enable reuse.



SteelTrace gives Developers an excellent, real-time, point of access to the discussion and chain of events surrounding the requirements capture and project definition process. You get a clear picture of what needs to be done, and all relevant decisions that were made along the way. As well as helping you document what is going on, you can manage and track project data throughout the lifecycle. Working with test is made a lot easier too.

SteelTrace gives you the information you need to develop great code that delivers on the business need.

Compuware Corporation
One Campus Martius
Detroit
Michigan 48226

Phone:
313.227.7300
800.521.9353

www.Compuware.com