

How SteelTrace helps Project Managers drive successful projects!

You are a lynchpin of project delivery in your organization. Responsible for delivering project success on plan, in budget and aligned with corporate business goals. The issues and challenges you face are often unknown to the outside world. Amongst other things, you have to:

- Align stakeholders, most of whom will come to the project teams with wide variations in perspective and experience
- Ensure that the fundamental building blocks of success are in place through excellence in requirements capture, definition and management throughout the project life cycle
- Collaborate and communicate with multiple teams – internal or customer-based, local or off-shore - managing expectations of all stakeholders
- Maintain a continual focus on ensuring best practice and standards are adhered to, no matter how challenging the timelines have become
- Account for your projects' progress and report in an understandable way that suits all stakeholders
- Ensure the delivery of a quality project fulfilling and tested against the specified business needs, with a complete set of project documentation.

Often, this all has to be achieved with participants operating from remote locations, exacerbating the challenges ...and within budget!

Your role can be the loneliest in the world when a delivered project falls short of the business sponsors' requirements and expectations. Don't let it happen to you!

SteelTrace gives you:

CLARITY ON THE ORIGINAL BUSINESS REQUIREMENTS AND NEED



The easy and complete requirements capture and definition that SteelTrace brings is a critical success factor for project fulfillment. Requirements are captured and documented at all levels: business, operational, visual etc. Branches, interdependencies, alternate flows etc. are also captured and are easily communicated to the technical team.

By delivering a clear and understandable picture of the project in all its facets, the development lifecycle is made a lot easier. Development no longer has to deal with ambiguous requirements, unclear dependencies and incomplete alternate flows. No longer do they have to handle long, un-versioned documents to figure out a complete picture of the project requirements.

MULTIPLE USERS ENABLED TO WORK ON THE PROJECT CONCURRENTLY AND MAKE REAL-TIME EDITS



SteelTrace is the ultimate collaboration tool. Your users can work on the most current version of the project every time, wherever they are, whether they are on- or off-line. All interchanges are recorded and tracked. SteelTrace ensures that only the requirement being worked on by an individual is locked (but is still visible) to others. Off-line workers have full system functionality and can merge with the main project in a fully controlled way when back on-line. Tracking project changes, handling project divergence, getting baseline sign off and using existing projects to kick off a new one are all made easy. In addition, you are assured that offshore teams work correctly using company standards and processes with full visibility.



ABILITY TO ADD CUSTOM PROPERTIES TO ANY PROJECT ELEMENT TO ENRICH PROJECT DATA



SteelTrace's structured approach allows you to create Custom Properties within each requirement, package and project, dramatically increasing the flexibility of the project to hold data specific to the needs of different roles. This means that information specific to domain, role, activity, etc can be used to enrich the project data (e.g. scalability, distribution, infrastructure, distribution, etc.) and make searching and sorting even more accurate. This enables searching based on high-risk, completed, person responsible, urgency, etc.

ABILITY TO ESTABLISH BASELINES



SteelTrace provides unparalleled baseline functionality. Whether for cloning a project to enable divergence or for establishing a point of sign off within a project or even for enabling the use of an existing project to kick off a new one, Baselines save a lot of time by making it easy to get project



sign-off and by safely tracking and reporting project change. SteelTrace's baselines also offer the ability to merge any changes back or forth that may be needed in another project, avoiding re-work. Locking down specific baselines and project phases also eases final sign-off of the project definition and specification.

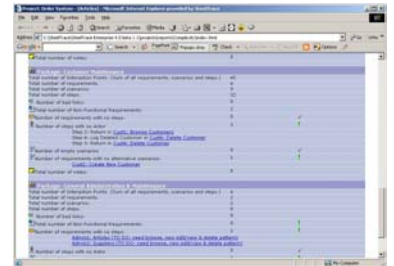
DOCUMENTS AND REPORTS THAT GIVE FULL DETAILS ON PROJECT PROGRESS



As Project Manager, you need real-time, accurate project data at your fingertips. SteelTrace's automatic document generation lets you communicate with your team in any output format. Their edits and feedback can be re-incorporated back into the main project in a controlled way, with full versioning.

SteelTrace offers a range of pre-canned reports and documents that can be used straight away or customized. New to version 4.0 is the Complexity and Completeness Report that automatically gives you a summary view of the project, its intricacy and completeness of its scope, perfect for high-level management of your project(s).

Project data can also be sorted and prioritized based on any customer field or metric. All reports and documents will also include associated artifacts (e.g. sample screenshots) and custom properties, ensuring completeness and accuracy. With SteelTrace, managing project edits is a lot easier – and a lot more reliable.



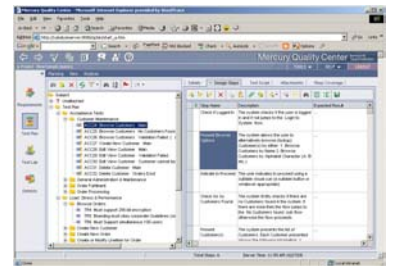
INTEGRATION WITH ALL MAJOR TEST TOOLS, MS PROJECT AND DEVELOPMENT ENVIRONMENTS



SteelTrace integrates smoothly with all leading Testing tools (e.g. Mercury Test Director and Compuware QA Center), in some cases bi-directionally, allowing a seamless transition of the automatically generated test cases into the actual test environment when appropriate.

This reduces the risk of error in transcribing testing plans etc from one system to another. By having a seamless map from requirement capture and definition through to the test and development environments, risk is radically reduced and quality improved.

SteelTrace's integrations with MS Project and all of the standard AD tools, means that your project data can also be seamlessly exported intact for other uses. Multiple export formats can be used including CSV files and XML. SteelTrace's full integration with all standard testing and development tools ensures that ALL requirements are properly mapped to the test and development environments.



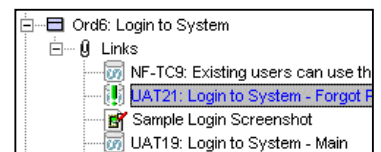
AUTOMATIC FLAGGING AND NOTIFICATION OF SUSPECT LINKS AND CHANGES



SteelTrace's deep traceability functionality ensures full visibility of the connections and interdependencies within and across projects and between elements of the project and external file artifacts. This, with SteelTrace's automatic Suspect Link capability, simplifies dependency- and impact- analysis and the highlighting of any changes that may have a knock-on effect on other project requirements. You can also mark specific project requirements or elements of special interest. Any changes made subsequently to those elements will be automatically notified to you by email with a link to the element concerned, showing the details of the proposed change and who made it.

This makes it very easy to keep track of what is happening in the project and what adjustments you need to make to the architecture and development plan envisaged for the project.

SteelTrace gives project managers comprehensive capturing, viewing and management of structured requirements. It gives you a rich graphical interface that builds scenarios and links them together, a document generation and round-tripping system, an interface with industry-standard UML modeling tools, full audit tracking of changes, a sophisticated project merging system, and fine-granularity implicit locking for collaborative working. SteelTrace is designed for teams of people who need to generate and track requirements from the inception of an IT project right through to its conclusion.



Compuware Corporation
One Campus Martius
Detroit
Michigan 48226

Phone:
313.227.7300
800.521.9353

www.Compuware.com