



AccuRev Plug-In for Eclipse 2018.2

Installation and Release Notes

Micro Focus
The Lawn
22-30 Old Bath Road
Newbury, Berkshire RG14 1QN
UK
<http://www.microfocus.com>

Copyright © Micro Focus 2018. All rights reserved.

MICRO FOCUS, the Micro Focus logo and AccuRev Plug-In for Eclipse Installation and Release Notes are trademarks or registered trademarks of Micro Focus IP Development Limited or its subsidiaries or affiliated companies in the United States, United Kingdom and other countries.

All other marks are the property of their respective owners.

2018-06-29

Contents

Introduction	4
Highlights of this Release	4
Installation	5
Platform Support	5
Installing on Eclipse	5
Adding the AccuRev Update Site	5
Installing AccuRev Plug-In for Eclipse	6
For AccuRev GIT Users	8
Installing on Eclipse C/C++ Development Tooling (CDT) Installations	16
Installing on Wind River Workbench	16
Verifying the Installation	17
Uninstalling AccuRev Plug-In for Eclipse	17
Setting Up a Local Update Site	17
Configuring Access to the AccuRev Web UI	18
Adding AccuRev Executables to the PATH (Apple Mac OS X only)	19
Enabling the AccuRev Diff Tool to Work as a Standalone (Apple Mac OS X Only)	19
AccuRev Diff Tool Must be on Your PATH (Linux/UNIX Only)	20
Release Notes	21
Version 2018.2	21
Version 2018.1	22
Version 2017.1	23
Version 2016.1 Hot Fix 1	24
Version 2016.1	24
Version 2015.1	24
Version 2014.1	25
Version 2013.5	27
Integration with Mylyn	28
Version 2013.4	35
Version 2013.3	35
Version 2013.2	36
Version 2013.1	37
Contacting Micro Focus	40
Information Needed by Micro Focus SupportLine	40

Introduction

AccuRev Plug-In for Eclipse integrates AccuRev functionality with the Eclipse Platform IDE. This document is your guide to installing AccuRev Plug-In for Eclipse. It is intended for the AccuRev system administrator. This book provides information specific to this release, including notes on platform support, and a summary of changes for the current and recent releases.

See the *AccuRev Plug-In for Eclipse User's Guide* for information about using the AccuRev Plug-In for Eclipse within the Eclipse environment.

For news on this product, visit Micro Focus SupportLine: <https://supportline.microfocus.com/>.

About this Document

This book assumes you are familiar with your operating system and its commands, as well as with AccuRev and Eclipse. The remaining sections in this book tell you how to prepare for and install AccuRev Plug-In for Eclipse and provide information on features, fixes, and known issues in the current and recent releases.

Highlights of this Release

RPI 635016, 635017 - Fixed the 'page not found error' when opening the Annotate view and the Version Browser

Git Feature

AccuRev Plug-In for Eclipse release 2018.2 introduces a new GIT feature that allows users to work within an existing AccuRev infrastructure to pull and push changes from/to an AccuRev stream using the Eclipse Git plugin workflow.

AccuRev 7.2 client needs to be installed on the machine prior to using the new Git feature. The AccuRev Git Client is installed by the AccuRev client-only installers for 64-bit Windows, 64-bit Linux, and macOS 10.13+ platforms. Users can also use command line to perform Git operations alongside the Eclipse plugin. Installation of the Git program must be done separately.

Supported Git commands are mentioned in the release notes section. See also the "What's New in AccuRev Release 7.2" section in the AccuRev 7.2 release notes for more information about the AccuRev Git Client and its capability.

Installation

Before installing AccuRev Plug-In for Eclipse, ensure that you have an AccuRev client on the same machine that is running Eclipse. See the Installation and Release Notes document for your version of AccuRev for instructions on installing AccuRev.



Note: AccuRev Plug-In for Eclipse version 2010.1 and later provides access to the AccuRev Web UI. For instructions on configuring this option, see [Configuring Access to the AccuRev Web Interface](#).

Platform Support

The AccuRev Plug-In for Eclipse supports the following versions of Eclipse.

2018.2	4.5.x, 4.6.x, 4.7.x.
2018.1	4.5.x, 4.6.x, 4.7.x.
2017.1	4.4.x, 4.5.x, 4.6.x.
2016.1	4.3.x, 4.4.x, 4.5.x.
2014.1	3.7.x, 4.2.x, 4.3.x.
2013.5	3.6.x, 3.7.x, 4.2.x.

We recommend Java 2 Runtime Environment 5.0 and higher. Versions 1.4.2 and higher are supported.

GIT Feature

The GIT Plug-In bundled in AccuRev Plug-In for Eclipse supports the following versions of Eclipse.

2018.2: 4.5.x, 4.6.x, 4.7.x

Pre-requisites:

1. Eclipse IDE must be updated with EGit-Git integrations for Eclipse from the marketplace. Even though version 4.5.x and 4.6.x of Eclipse comes bundled with the dependencies of EGit-Git integrations, it is required to have it updated.
2. AccuRev 7.2 client.
3. Git version 2.13.x and 2.14.x. AccuRev Git Client is incompatible with some recent Git releases. See the Known issues section for more details.

Installing on Eclipse



Note: While the AccuRev Plug-In for Eclipse on Eclipse 3.5, 3.6, 3.7, and 4.x is the same as on Eclipse 4.7.x, you must use the plug-in version matching the Eclipse version as specified in *Platform Support* matrix.

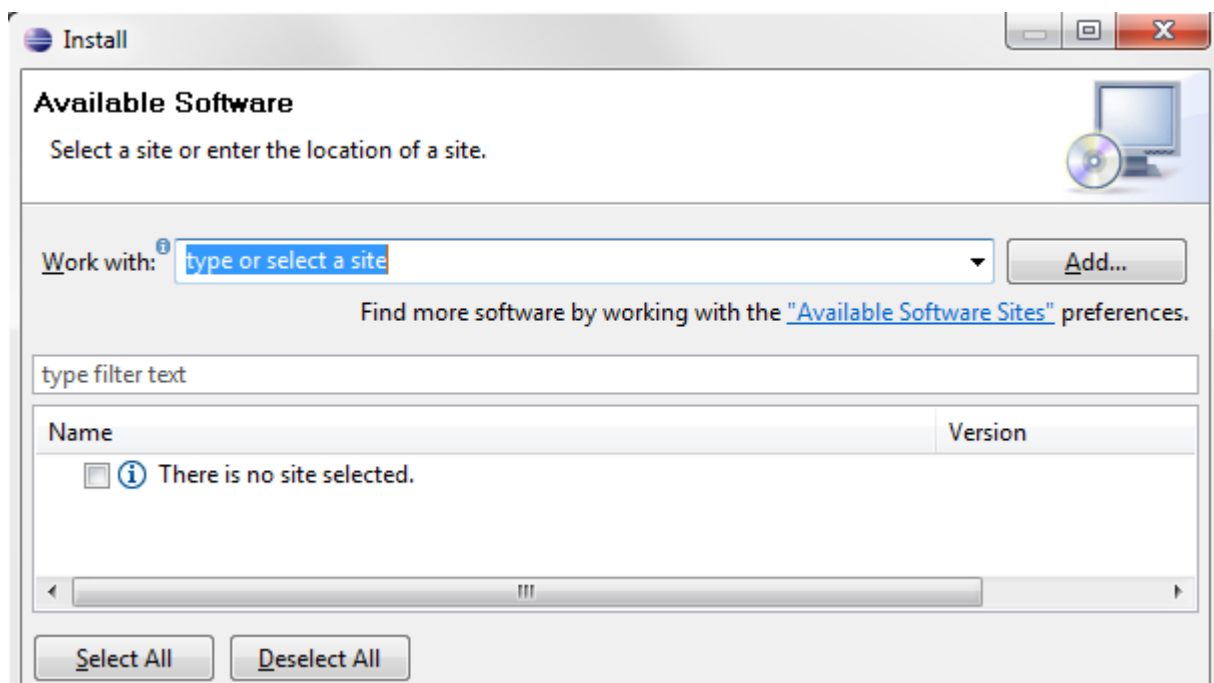
Use the procedures described in this section to add the AccuRev update site to the Eclipse repository and to install AccuRev Plug-In for Eclipse.

Adding the AccuRev Update Site

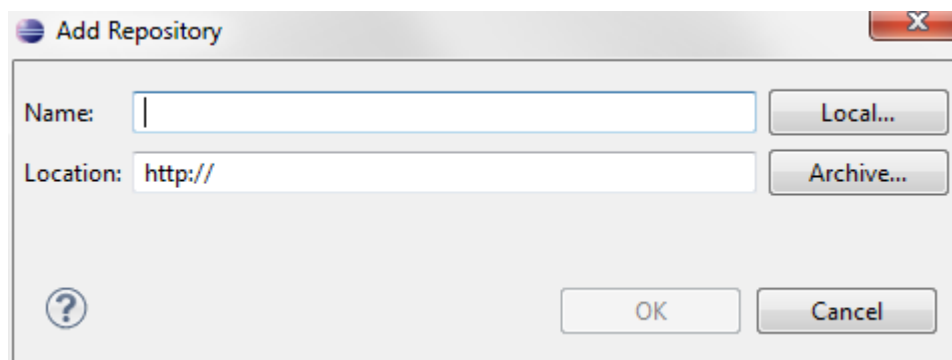
AccuRev provides the standard plug-in installation method for the Eclipse IDE via an update site. If you require offline or local network access to an update site for installing the plug-in, see [Setting Up a Local Update Site](#).

Otherwise, follow this procedure to add the AccuRev update site to the list of sites that Eclipse can contact:

1. Start the Eclipse IDE.
2. Select **Help > Install New Software** from the Eclipse menu. The first page of the **Install New Software** wizard appears.



3. Click **Add**. The **Add Repository** dialog box appears.



4. Fill in the fields in the **Add Repository** dialog box:

Name Enter a unique name for the AccuRev Plug-In.

Location Enter the URL of the AccuRev update site: `http://altd.borland.com/update/accurev/2018.1/site.xml`

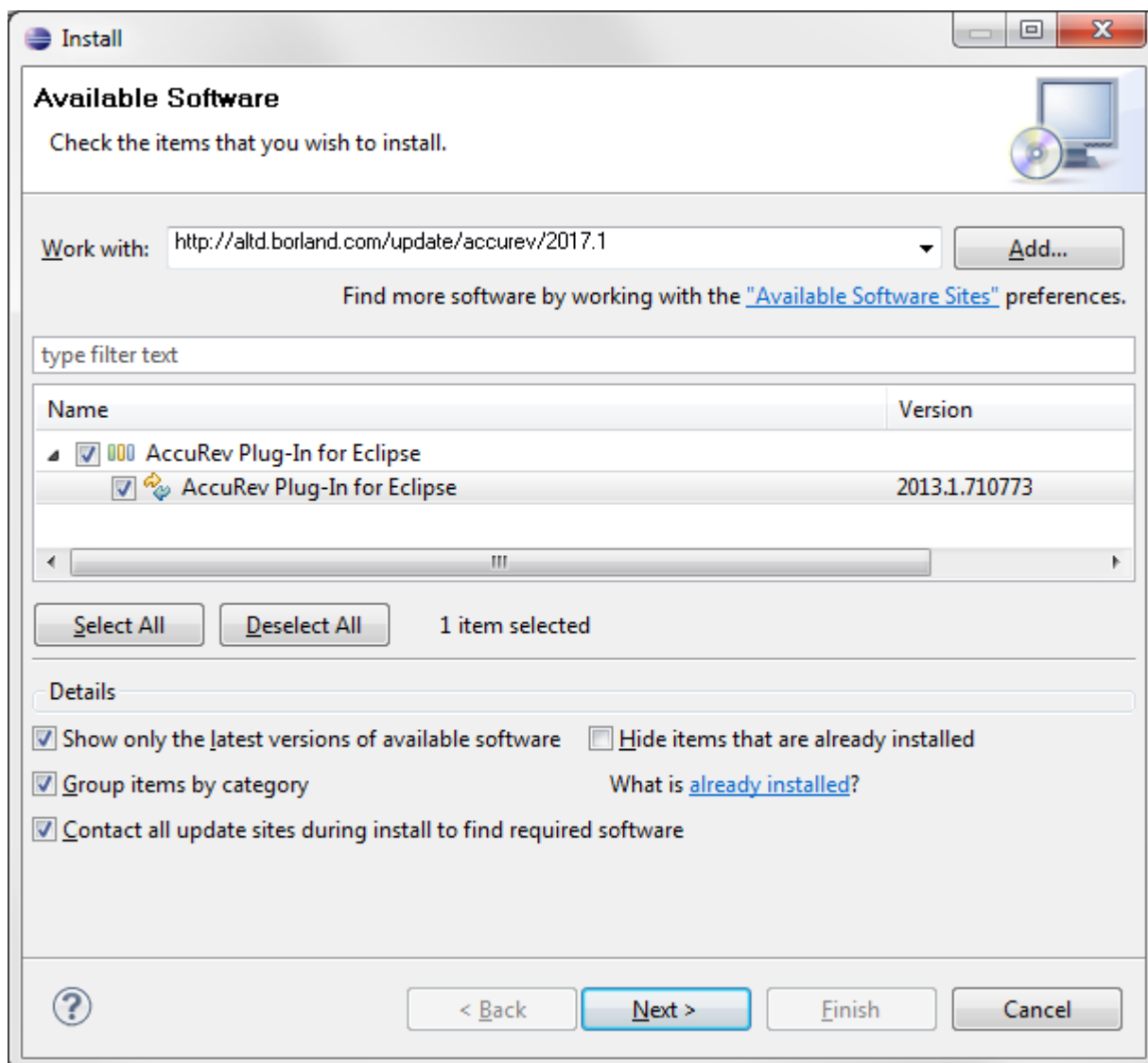
5. Click **OK** to add the AccuRev update site to the Eclipse repository.
6. To continue installing, go to [Installing AccuRev Plug-In for Eclipse](#). If you want to install AccuRev Plug-In for Eclipse at a later time, click **Cancel** to stop the **Install New Software** wizard.

Installing AccuRev Plug-In for Eclipse


Before you begin, add the AccuRev update site to the Eclipse repository if you have not done so already. See [Adding the AccuRev Update Site](#).

1. Start the Eclipse IDE.

2. Select **Help > Install New Software** from the Eclipse menu. The first page of the **Install New Software** wizard appears.
3. Select the **AccuRev Plug-In for Eclipse** site from the **Work with** list.

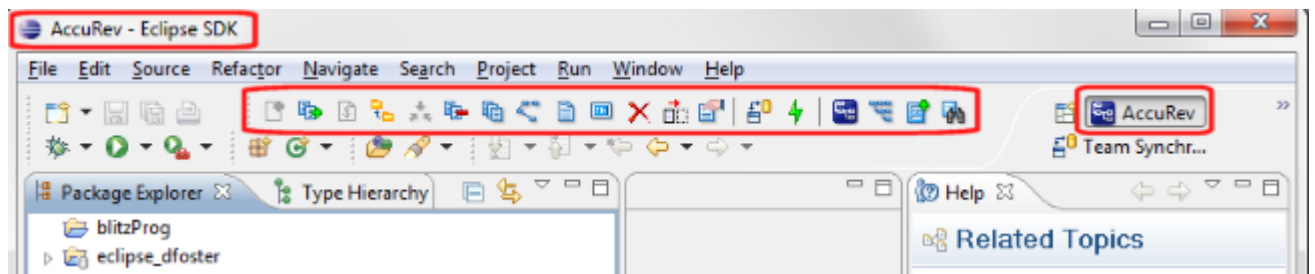



4. Select the checkbox next to **AccuRev Plug-In for Eclipse** and click **Next**.
5. Click through the wizard to review the installation and to confirm the license agreement. Eclipse installs AccuRev Plug-In for Eclipse.

 **Note:** During installation, you might receive a security warning about unsigned content. Click **OK** to acknowledge the warning and finish the installation.

When the installation finishes, Eclipse prompts you to restart the Eclipse IDE.

6. Click **Restart Now** to restart the Eclipse IDE and complete the installation. When you restart Eclipse, it opens in the AccuRev perspective, as shown in the following illustration:

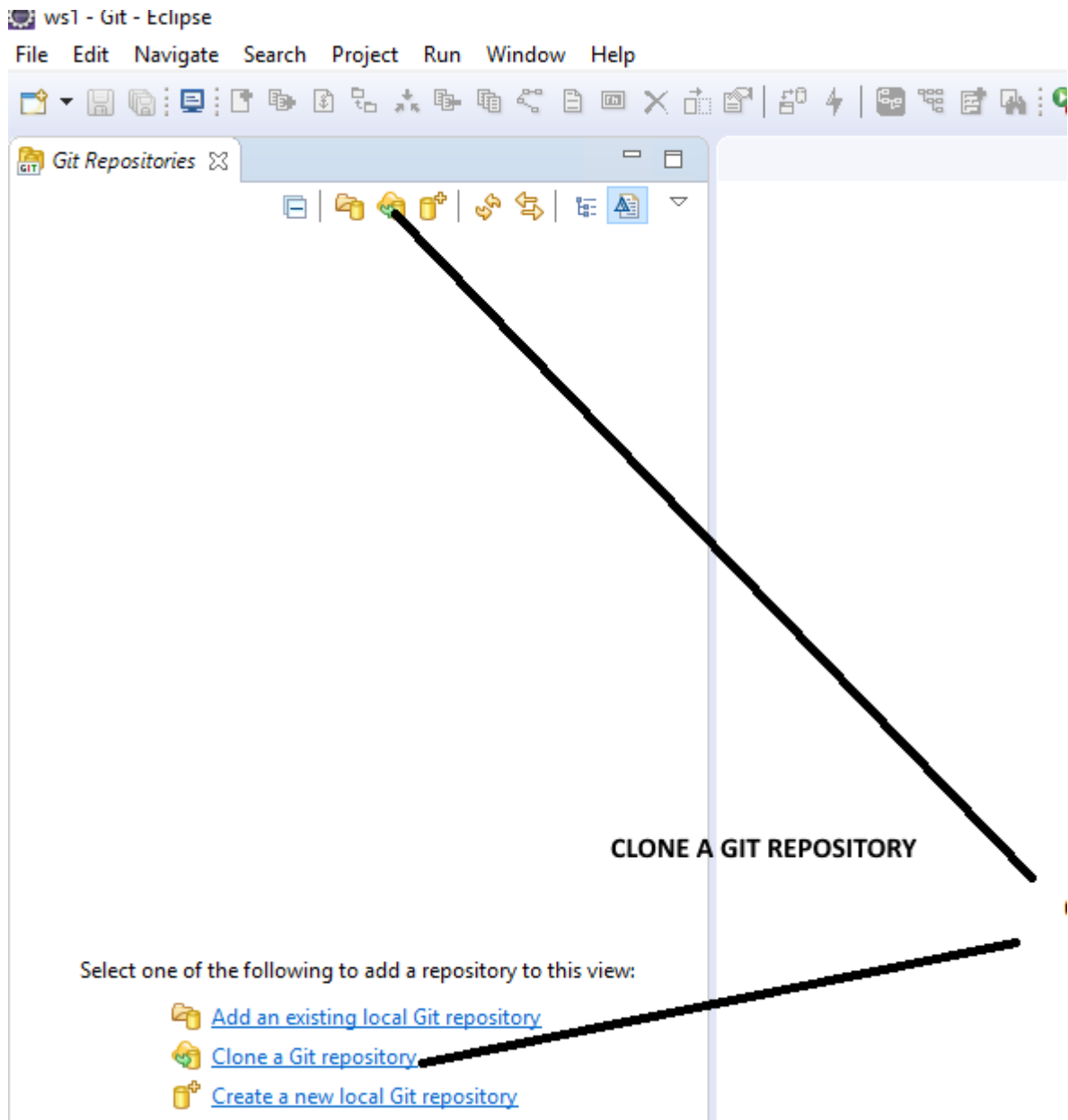


 **Note:** Buttons on the **AccuRev** toolbar are displayed as active only if you have selected a file in the **Package Explorer** that has been added to AccuRev.

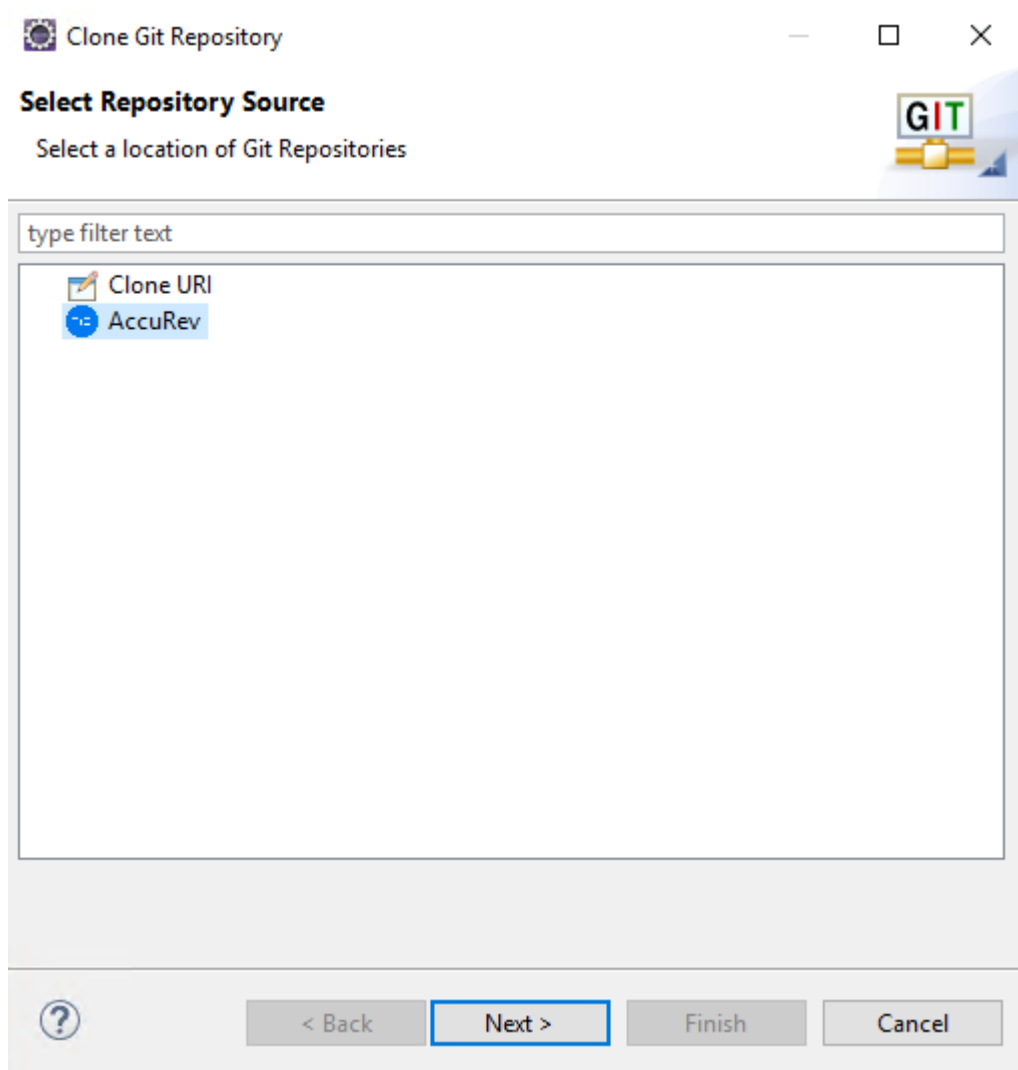
For AccuRev GIT Users

After installing the new 2018.2 eclipse plugin follow the steps below to clone from an AccuRev stream into your Eclipse project.

1. Creating an Eclipse Git Project by Cloning from Existing AccuRev Stream.
2. Click on option 'Clone a Git Repository' option.

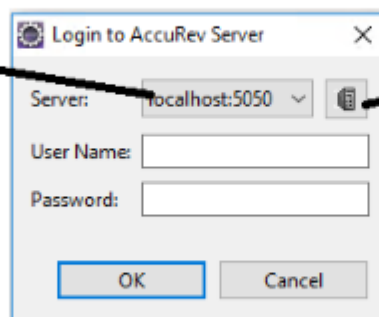


3. Select 'AccuRev' as shown below and click Next.



4. Login window pops up. Add the new server if it is not added or continue login with valid username and password and click OK.

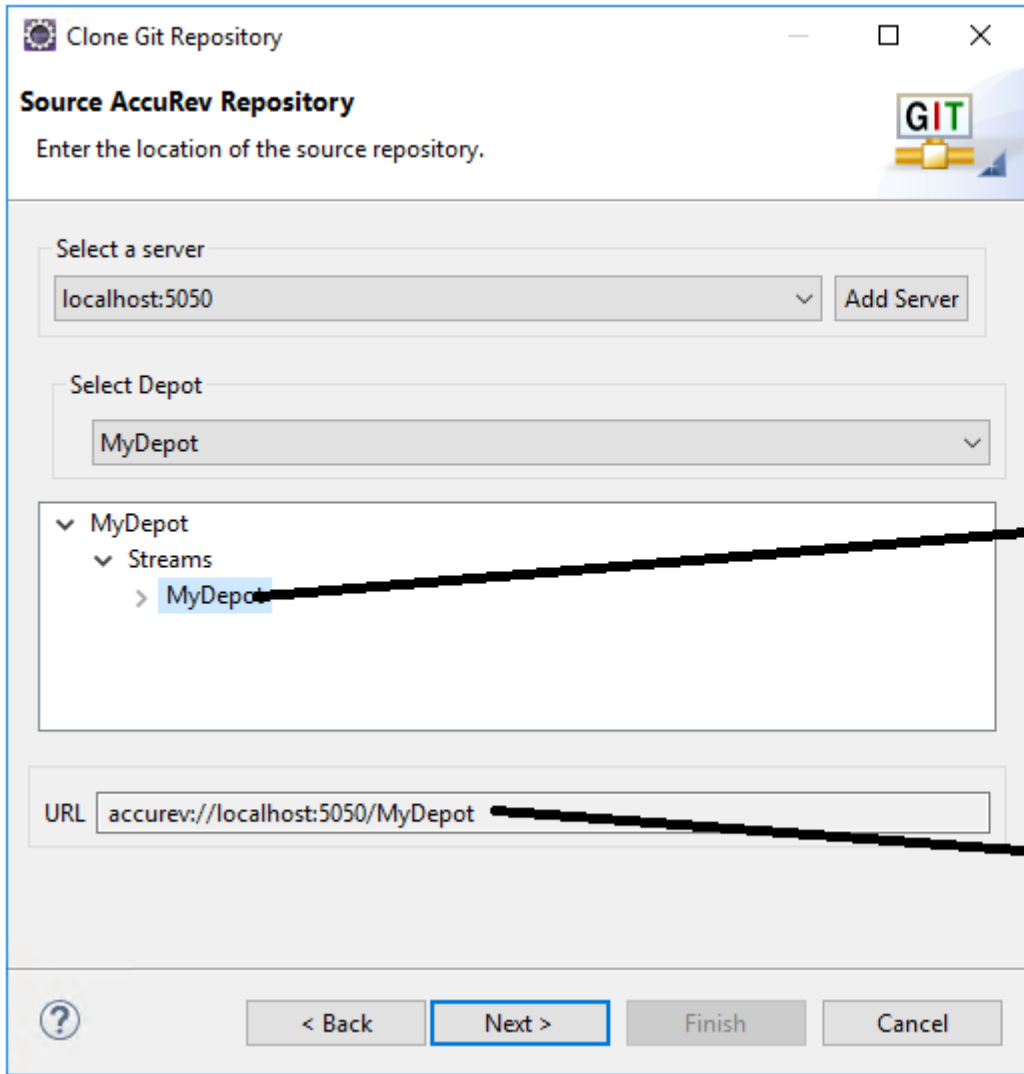
Select the server & perform login



Click this & follow steps to add new server.

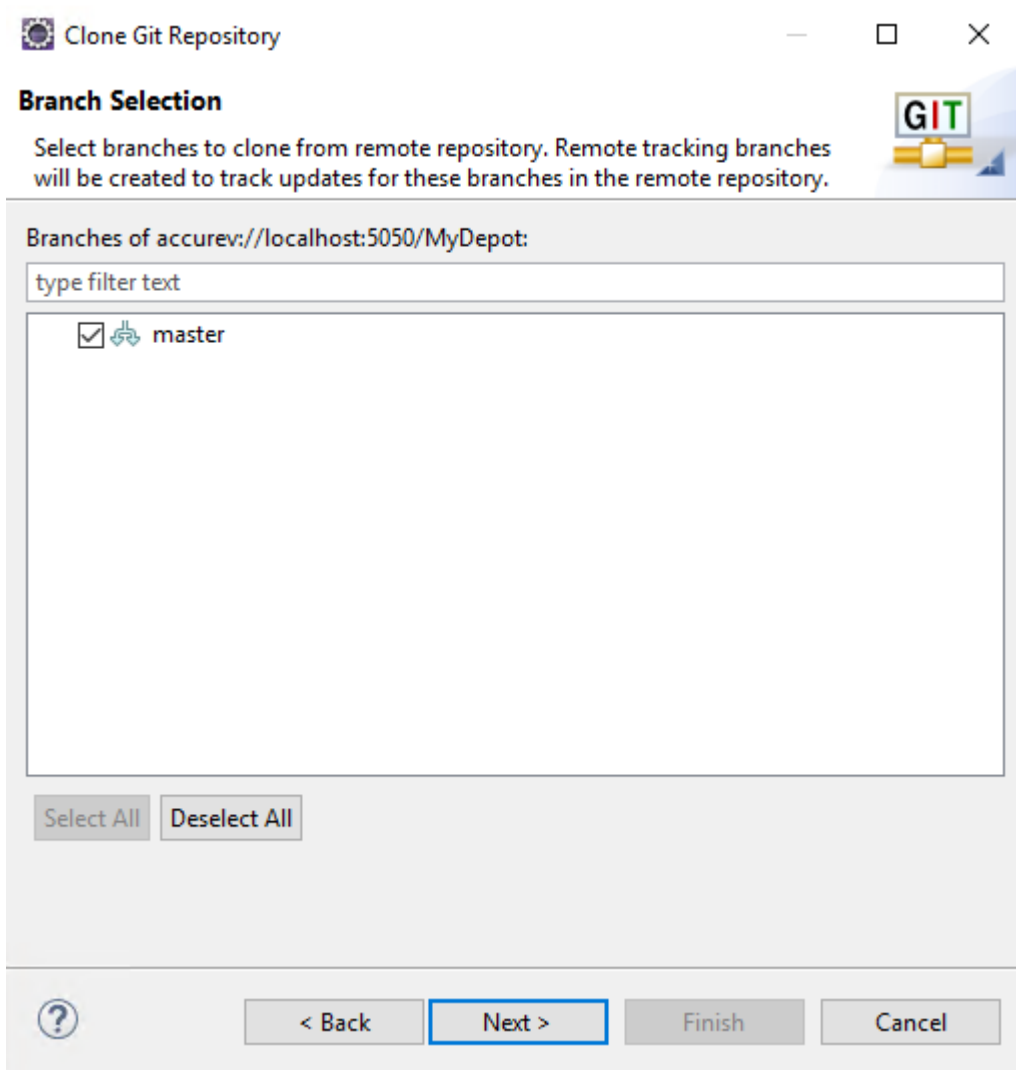
5. After a successful Login, you will see the window below that has the 'Select Depot' option which you can use to choose desired stream to be cloned. Upon selecting the depot, you will see the streams

listed in the selected depot. Select the depot and select particular stream which has to be cloned into Git repository and click Next button.

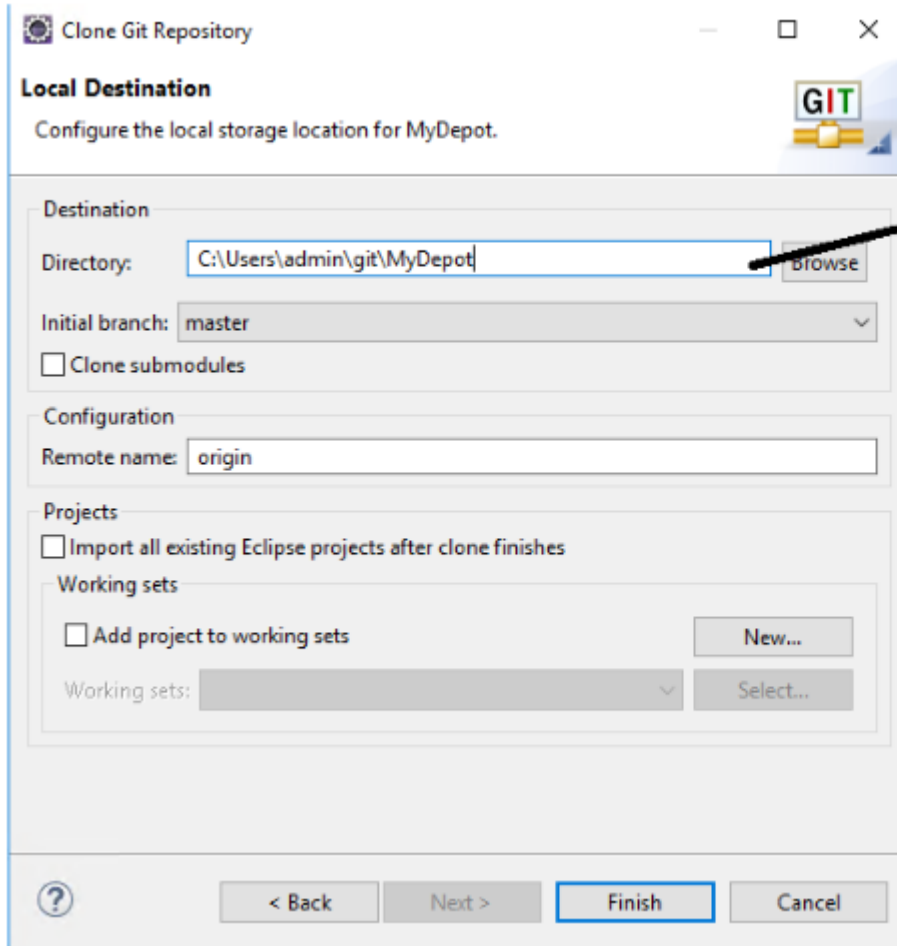


Upon se
the vali

6. Click Next,

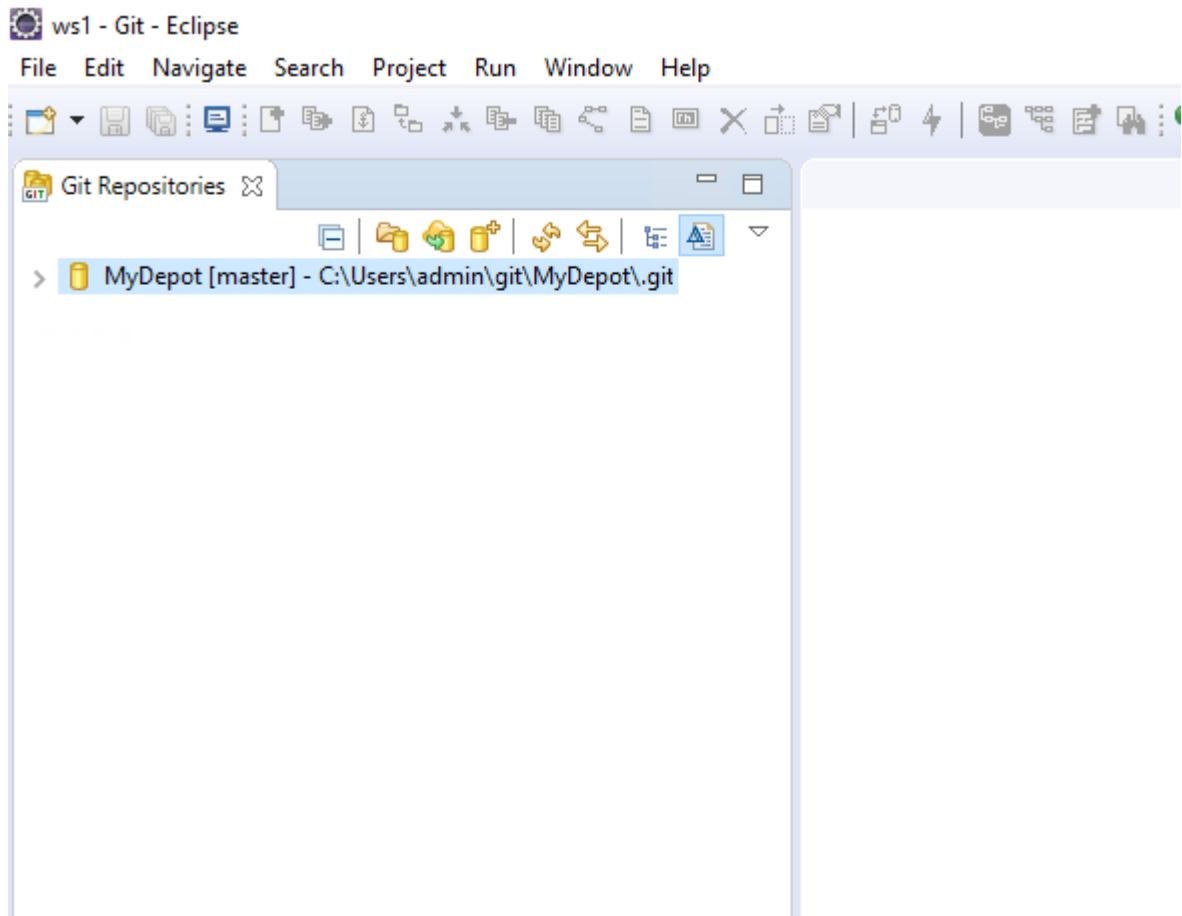


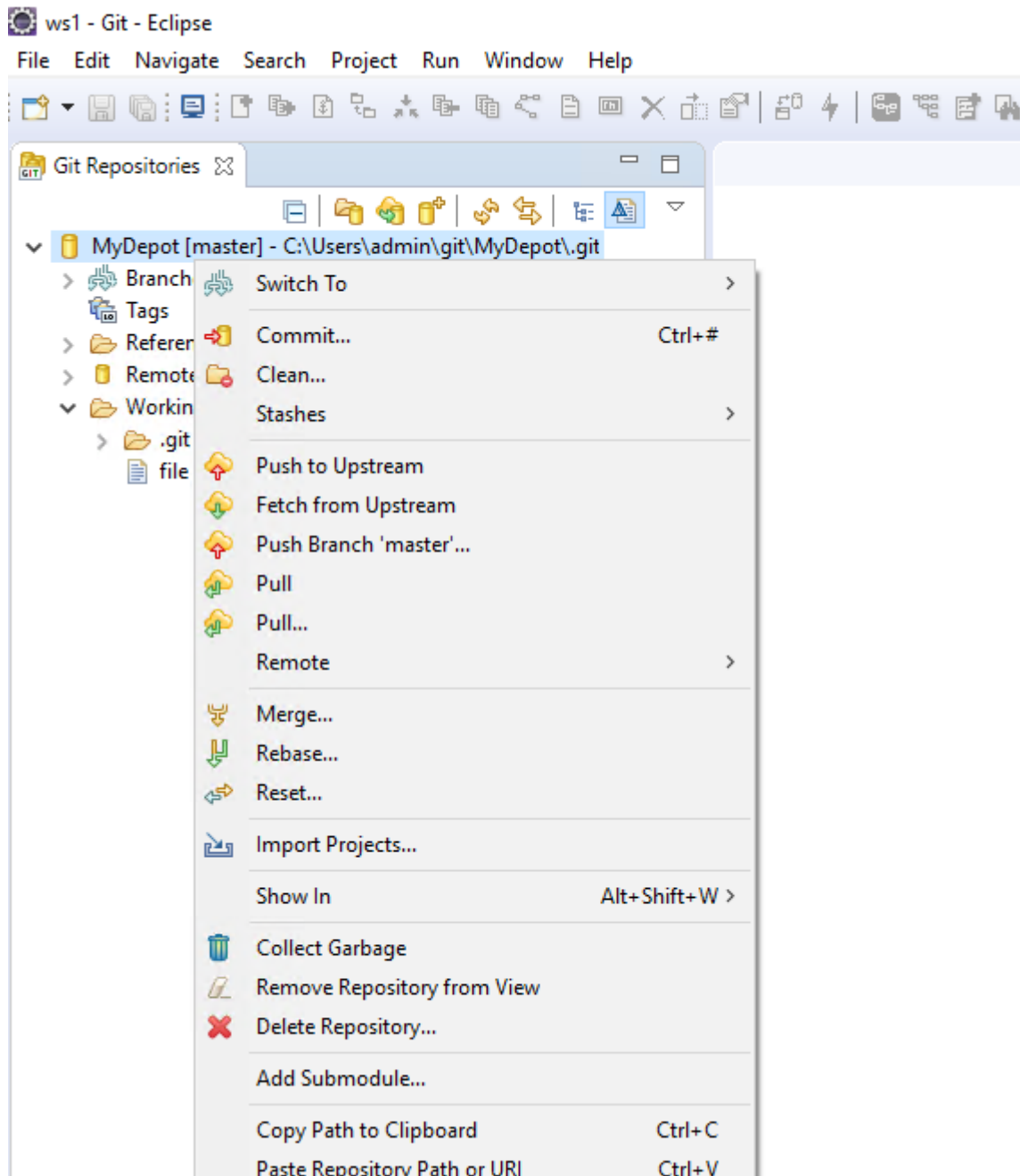
7. Select the valid directory to create the Git repository and click Finish option.



Choose the directory where git repo to be created

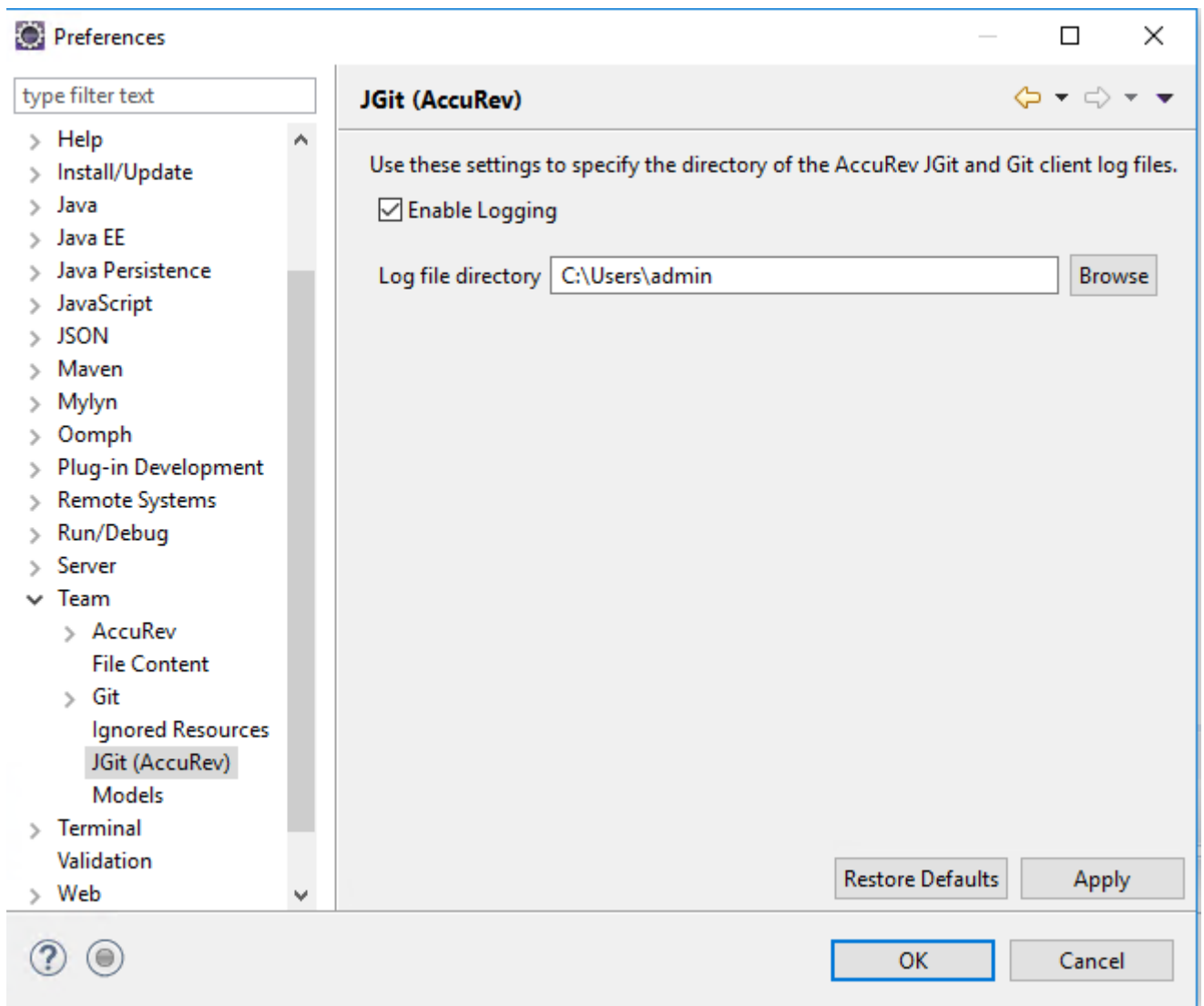
8. Git repository will be created as shown below and now you can continue performing supported Git operations.





To Enable Logging

Navigate to Window>Preferences>Team>Git(AccuRev) to bring up the JGit (AccuRev) preferences window. If the logs are enabled as shown below, it will create two logs named 'Accurev_GitClient_Log.log' and 'Accurev_Git_Log.log' in the specified directory. Logging is not enabled by default.



Installing on Eclipse C/C++ Development Tooling (CDT) Installations

Installation on Eclipse CDT 3.6 requires that you first install the Java Development Tools (JDT) 3.6.1 or later. Once the JDT is installed, you can successfully install the AccuRev Plug-In for Eclipse.

To install the JDT on Eclipse CDT 3.6:

1. In Eclipse C++, select **Help > Install New Software** from the menu. The **Install wizard** appears.
2. In the filter field following the **Work with** field, type `java`. The table displays available Java plug-ins.
3. Select **Eclipse Java Development Tools**.
4. Click **Next** to complete the **Eclipse Install wizard**.

Installing on Wind River Workbench

Installation on Wind River Workbench requires that you first install the Java Development Tools (JDT) 3.6.1 or later.

To install the JDT on Wind River Workbench:


1. Select **Window > Open Perspective > Advanced Device Development** from the **Workbench** menu to open the **Advanced Device Development** perspective.
2. Select **Help > Install New Software** from the **Advanced Device Development** perspective menu.
3. In the **Preferences** dialog box, select **Install/Update > Available Software Sites**.
4. Locate and select **Eclipse Galileo Repository**, click the **Enable** button, and then click **OK**.
5. In the **Install** dialog box, locate and select `Eclipse Java Development Tools`.
6. Click **Next** to complete the **Wind River Install** wizard.

Verifying the Installation

To verify that the installation of AccuRev Plug-In for Eclipse was successful:

1. Start the Eclipse IDE.
2. Select **Help > About Eclipse** from the **Eclipse** menu.
3. Click **Installation Details**, and go to the **Installed Software** tab on the **Eclipse SDK Installation Details** dialog box.
4. Verify that an `AccuRev Plug-In for Eclipse` entry exists.

Uninstalling AccuRev Plug-In for Eclipse

1. Start the Eclipse IDE.
2. Click **Help > Installation Details** and go to the **Installed Software** tab on the **Eclipse Installation Details** dialog box.
3. Highlight the `AccuRev Plug-In for Eclipse` entry.
4. Click the **Uninstall...** button.
 **Note:** If this button is disabled, you manually installed an earlier version of the plug-in. Instead of using this procedure, shut down the Eclipse IDE, then search for and delete files and folders in your `Eclipse` installation directory that start with `com.accurev.eclipse`.
5. When the **Uninstall** window appears, verify that you want to uninstall the items shown, and click **Finish** to uninstall the plug-in.

Setting Up a Local Update Site

If your organization's IT policies do not allow regular Eclipse plug-in updates using a remote update site, you can create an update site on your local network instead.

To create a local update site:

1. Create a directory on a network accessible machine called `AccuRevPlugIn_update` or something similar.
2. Using a web browser, access the **AccuRev Plug-In** download page: <https://supportline.microfocus.com/websync/productupdatessearch.aspx>
3. Download the .ZIP file for the AccuRev Plug-In for Eclipse (`AccuRevPlugIn_Eclipse_201x_x.zip`, for example) to the local `AccuRevPlugIn_update` directory you created in Step 1.
4. Extract the .ZIP file contents to the `AccuRevPlugIn_update` directory.
5. Distribute the location of the `AccuRevPlugIn_update` directory to the AccuRev Plug-In for Eclipse users in your organization. They can then define a new update site using the `AccuRevPlugIn_update` directory.

Configuring Access to the AccuRev Web UI

Version 2013.1 and later of AccuRev Plug-In for Eclipse provides access to the AccuRev Web UI. This section describes how to configure the AccuRev Web UI to work with Eclipse.

Features Available through the AccuRev Web UI

When you configure access to the AccuRev Web UI, you make the following features available to your users:

- Version Browser.
- StreamBrowser.
- Annotate.
- Create New Issue.
- Open Issue Queries.

Before You Begin

Before performing the configuration procedure, obtain the URL used to access the AccuRev Web UI. For example, `http://localhost:8080/accurev`. You will need this URL to complete the configuration procedure.

How to Configure the AccuRev Web UI

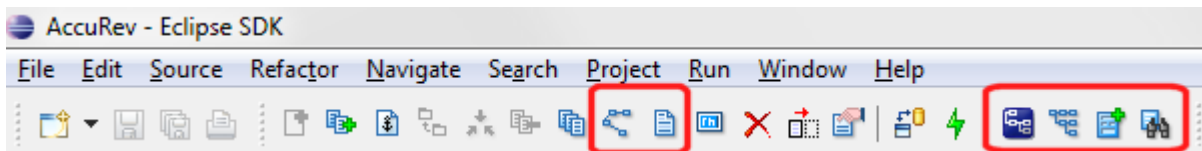
To configure the AccuRev Web UI to work with Eclipse, you need to modify the AccuRev Server `settings.xml` file as described in the following procedure:

1. Shut down Eclipse.
2. Create a file called `settings.xml` and add these lines:

```
<settings>
  <webui url="http://webui-host:port/accurev" />
</settings>
```

Where `webui-host:port` is the server name and port of the server hosting the AccuRev Web UI -- `localhost:8080`, for example.

3. On the AccuRev Server, save `settings.xml` in the `storage\site_slice\dispatch\config` directory where you installed AccuRev.
4. If you are using AccuRev replica servers, create and save `settings.xml` to the `storage\site_slice\dispatch\config` directories on those machines as well.
5. Restart Eclipse. Several new buttons appear on the **AccuRev** perspective toolbar as shown in the following illustration:



The highlighted groups of buttons are for features that are accessible only after access to the AccuRev Web UI has been configured:

- **Version Browser**
- **Annotate**
- **Open the Web UI**
- **Open the StreamBrowser**
- **Create**

- **New Issue**
- **Open Issue Queries**

6. Click the Open Web UI button to start the AccuRev Web UI within the Eclipse framework.



Note: If you are not already logged in to AccuRev, you are prompted to do so. See *Logging In to AccuRev* in the *AccuRev Plug-In for Eclipse User's Guide* for more information.

Adding AccuRev Executables to the PATH (Apple Mac OS X only)

To ensure that all AccuRev executables are on your system's PATH, create the following files as `sudo`:

1. `/etc/paths.d/AccuRev`. For example:

```
sudo echo "/Applications/AccuRev/bin" > /etc/paths.d/AccuRev
```

2. `/etc/paths.d/Acdiffgui`. For example:

```
sudo echo "/Applications/AccuRev/bin/acdiffgui.app/Contents/MacOS" > /etc/paths.d/Acdiffgui
```

3. `/etc/paths.d/Acgui`. For example:

```
sudo echo "/Applications/AccuRev/bin/acgui.app/Contents/MacOS" > /etc/paths.d/Acgui
```

Enabling the AccuRev Diff Tool to Work as a Standalone (Apple Mac OS X Only)

To enable the AccuRev diff GUI tool (`acdiffgui`) to work stand-alone as well as from an IDE integration such as Eclipse, do the following:

1. Make a backup copy of `acdiffgui`:

```
cd /Applications/AccuRev/bin/acdiffgui.app/Contents/MacOS
mv acdiffgui acdiffgui.orig
```

2. Create a new `acdiffgui` file with the following content:

```
#!/usr/bin/perl
$cmd = "java -Duser.dir=/Applications/AccuRev/bin -Xms32M -Xmx512M -
classpath
\"/Applications/AccuRev/bin/oro.jar:/Applications/AccuRev/bin/
xercesImpl.jar:/
Applications/AccuRev/bin/xml-apis.jar:/Applications/AccuRev/bin/fw.jar:/
Applications/AccuRev/bin/werken.opt.jar:/Applications/AccuRev/bin/diff.jar
\" diff.DiffApp ";
foreach $arg(@ARGV)
{
$cmd .= "\"$arg\" ";
}
system ($cmd);
```

3. Close any shells.

4. Open a new shell.

Running `acdiffgui` should now bring up the AccuRev graphical diff tool, and it should also work from within any integrated IDE.

AccuRev Diff Tool Must be on Your PATH (Linux/UNIX Only)

The `Merge` and `Diff Against` commands in the AccuRev perspective rely on access to the `acdifftool` executable (which is part of the AccuRev product installation). If the `acdifftool` executable or a link to it is not in your `PATH` and accessible by the currently logged-in user, these operations will fail silently.

Release Notes

This section contains topics describing the changes for each release of AccuRev Plug-In for Eclipse.

Version 2018.2

AccuRev Feature

- RPI# 1112342- 'Annotate and Version Browser doesn't work in Eclipse plugin' issue is fixed in this release.
- RPI# 1114193 - 'Annotate and Version Browser doesn't work in Eclipse plugin' issue is fixed in this release.

AccuRev Git Feature

Below Git functionality is supported in this Release:

- Clone
- Push
- Pull
- Fetch
- Merge
- Submodule: AccuRev supports git's submodules with the caveats: One the originating repo cloned from AccuRev, and secondly any submodules added come from native Git repos, and not back by AccuRev. If you need to have multiple AccuRev streams, depots, as well as content from different AccuRev server in your repo then use git's multiple remote functionality.
- Branch: Only local branches are supported. Branches from the local Git repo that have been merged to the main branch will be reflected in AccuRev

Known Issues in AccuRev Git

Branches functionality supported with caveats

Commits in a local branch can be pushed to the remote master(AccuRev) by configuring the push option to point to master(AccuRev stream) for that particular branch, or they can be merged into the local master branch then pushed from the local master branch master(AccuRev stream) AccuRev Git is incompatible with some recent Git releases A defect/regression that was introduced in Git version 2.15 results in merge commits being skipped during a push operation. Because of this, the AccuRev Git Client is compatible with Git 2.13 and 2.14, but incompatible with Git 2.15.x, 2.16.x, and 2.17.0. A fix has been submitted to the Git community and will be released in an upcoming Git patch. Please contact Customer Care for the most up-to-date information about Git versions that are compatible with the AccuRev Git Client.

AccuRev Git Client is incompatible with pre-10.13 versions of macOS

The AccuRev Git Client supports macOS High Sierra 10.13 and higher.

Remote tags, back to the AccuRev server, are not supported at this time.

Working with multiple AccuRev servers/depots/streams in one Git repo [Remote Clone] is not supported in Git plugin.

Cloning for a stream which has spaces in the name fails.

Create a Project > share > to Git repo > Commit / Push is not working.

Cloning happens only at the stream level.

Import Project with or without working Set option.

Clone to a folder with Non ASCII file name.

Moving files between folders in Eclipse, on Mac OS, push those to master (AccuRev stream) and those files will be missing from AR stream.

Version 2018.1

1107251 - Provide support for Eclipse Oxygen (4.7.0, 4.7.1)

In this release, the AccuRev Plug-In for Eclipse supports Eclipse Oxygen 4.7.x. This version is backward compatible with older Eclipse versions (4.2.2 and higher).

1107521 - Eclipse: On Linux Extra dialog box when running update

In previous releases, when users ran an `Update` command from the **AccuRev** context menu, an extra dialog box opened that would not get dismissed automatically. This has been fixed in the current release.

632156 - Update AccuRev Plug-In for Eclipse to use Eclipse SDK 4.4

The Eclipse SDK used by the AccuRev Plug-In for Eclipse has been updated to 4.4 for better compatibility with the newer Eclipse versions.

632157 - Update plugin to use JRE8

The JRE used for building AccuRev Plug-In for Eclipse has been updated to JRE8.

632158 - Unable to perform Send/Remove issue

In previous releases, when **Send/Remove issue** was performed, the user was presented with the `CPK query results` as long as `CPK trigger` was defined, otherwise an exception was thrown in the logs. This has been fixed. Now, the user will be presented with results from the default query (as long as it is defined), otherwise, an input prompt is shown.

632159 - Enable reading `acclient.cnf` based on `AccuRev_HOME` in conjunction with AccuRev 7.1

AccuRev 7.1 now reads the `acclient.cnf` file based on the `AccuRev_HOME` environment variable or home directory if `AccuRev_HOME` is not set. Please see the *AccuRev Installation and Release Notes* (Version 7.1) for details.

632161 - No default path in AccuRev Wizard provided while checking out from Stream

Sometimes, the AccuRev project wizard doesn't show the default path for an AccuRev workspace while checking out a project from an AccuRev stream. This is fixed and now the workspace is provided from the AccuRev client property `lastSavedWorkspacePath`.

632162 - Terminal windows showing up for each AccuRev operation on Linux

In previous releases, while performing AccuRev operations in Eclipse on Linux like `Add`, `Keep`, `Promote`, and `Update`, a terminal window would remain visible even after the operation is done. This has been fixed in current release.

Version 2017.1

1105967 - Support for Eclipse Neon (4.6.0, 4.6.1 and 4.6.2)

In this release, the AccuRev Plug-In for Eclipse supports Eclipse Neon 4.6.x. This AccuRev Plug-In for Eclipse is backward compatible with older Eclipse versions (4.2.2 and higher).

1104443 - AccuRev Plug-In for Eclipse Installation and Release Notes version 2016.1 have invalid link

The *AccuRev Plug-In for Eclipse Install Release Notes* 2016.1 had a few invalid links in it, the links have been corrected in this release.

1104442 - Local Eclipse 2016.1 update site not working

AccuRev Plug-In for Eclipse can be updated using a remote update site. This site is provided with an archived .zip file for the AccuRev Plug-In for Eclipse. One of the steps for AccuRev Plug-In for Eclipse update requires the user to download the .zip file, extract it and then install it. In the previous release, the .zip file for the AccuRev Plug-In for Eclipse was not installable after extraction. This problem has been rectified in the current release.

621568 - Import/New 'Project from AccuRev' dialog does not close correctly

In previous releases, an attempt to import projects using the **AccuRev Project** wizard, at times, caused Eclipse to hang. This issue has been resolved in the current result.

619555 - Toolbar items are not activated for AccuRev resources

In previous releases, sometimes toolbar items would not get activated for AccuRev resources. This has been fixed in the current release.

19428652 - Unable to perform Diff from Basis

In previous releases, it was not possible to perform the Diff operation from **AccuRev** context menu. This has been fixed now.

19428651- Recursive promote from folder doesn't work

In previous releases, users could not perform recursive promote from top level folder. This can be performed now.

Version 2016.1 Hot Fix 1

18874343 - Eclipse needs restart to show newly created Depots/WorkSpace

If a user created a new depot on AccuRev Client , the depot was not visible on Eclipse **Share Project Wizard** without a restart. The issue has been resolved in this release. The user can create a new depot on AccuRev Client and on Eclipse without restarting. Additionally, user can share a project on **Share Project Wizard** and then select the required server and see the newly created depot.

19004294 - Depot list not refreshing while changing servers

While user tries to share a project from Eclipse to AccuRev, the **Depot** list does not refresh. On the **Share Project Wizard**, if there are multiple servers added to the list and the user tries to switch from one to another, the **Select Depot** list does not refresh. However, the **Workspace** list does refresh properly as soon as the server details changed.

The issue has been resolved in this release. The **Depot** list refreshes as soon as user selects the required server.

Version 2016.1

39212 - Support for Eclipse Mars 4.5.0 and 4.5.1

In this release, the AccuRev Plug-In for Eclipse supports Eclipse Mars 4.5.0 and 4.5.1 and has been fully tested to work with older versions of Eclipse (4.2.2 and higher).

35257 (1096105) - AccuRev functions not active within Eclipse nested project

In previous releases, AccuRev functions were not active within an Eclipse nested project. This issue has been corrected in the current release.

Create Patch button is disabled while doing Select All

When creating a patch with **Select All > CREATE**, the **Create Patch** button is disabled. This issue has been fixed in the current release.

Version 2015.1

36037 - Cannot import new files into Eclipse after upgrading the AccuRev Plug-In for Eclipse

In previous releases, the process of attempting to add a new project in Eclipse failed after upgrading the AccuRev Plug-In for Eclipse. This problem has been corrected in the current release.

36439 - Creating a project in a new Eclipse workspace generates an exception

In previous releases, attempting to create a project in a new Eclipse workspace generated a `java.lang.StringIndexOutOfBoundsException` error. This problem has been corrected in the current release.

36968 - Multi-job performance has been improved

The `Eclipse Jobs` API has been implemented in the current release to automate job scheduling and improve multi-job performance.

37038 - Error creating a Gradle project using the AccuRev Plug-In for Eclipse

The AccuRev **New Project** wizard currently supports `Java` and `General` project types directly. Some project types, such as `Gradle`, have unique name restrictions and perform post-processing, which is not compatible with the AccuRev project creation process. If you experience problems when creating a new AccuRev project and specifying the additional type choice, choose **General > Project** and, after the process completes, right-click the project, choose **Configure**, and select the desired type.

Version 2014.1

27585 - New: The Login dialog is automatically populated with the correct server name

In previous releases, the **Server** field of the **Login** dialog box contained the name of the user's default server. Support has been added to automatically populate this field with the server name that is associated with the currently selected Eclipse project.

27888 - Shared workspaces not recognized

In previous releases, AccuRev Plug-In for Eclipse did not recognize workspaces that are shared through a UNC path or a mapped drive. This problem has been corrected in the current release.

29014 - Project Explorer hangs when AccuRev Plug-In for Eclipse is present

In previous releases, performing certain AccuRev operations in the **Project Explorer** view in Eclipse caused the **Project Explorer** to hang and rendered Eclipse unresponsive. This problem has been corrected in the current release.

29217 - Error encountered when promoting from the Team Synchronization perspective in Eclipse

In previous releases, attempting to perform a promote operation from the **Team Synchronization** perspective in Eclipse produced the following error message: `Element is not in default group`. This problem has been corrected in the current release.

29227 - Eclipse restart required after switching from wireless to wired adapter

In previous releases, users who switched from a wireless to a wired adapter were required to log in to AccuRev again, and **Team** options were unavailable until Eclipse was restarted. This problem has been corrected in the current release.

29613 - Label decorations too large

In previous releases, the size of the label decorations (overlay icons) used by AccuRev Plug-In for Eclipse was too large and sometimes hid Eclipse information. In the current release, the size of the overlay icons has been reduced to 7x8 pixels, in accordance with Eclipse standards.

30782 - Promoting a file using AccuRev Plug-In for Eclipse requires an issue number

In previous releases, AccuRev Plug-In for Eclipse sometimes prompted users for issue numbers unnecessarily during a promote operation. This problem has been corrected in the current release.

30848 - New: Ignored files now show status indicators when displayed within the AccuRev perspective

In previous releases, the status of ignored files was not displayed in the **AccuRev** perspective of the **Package Explorer**. To correct this problem, a new decorator icon has been added to indicate the ignored status of files. In addition, the **Add to Ignore** option is now available only for (external) files and is disabled

for (member) files, the **Add to AccuRev Depot** option is now disabled for (external) (ignored) files, and a **Remove from Ignore** option has been added for (external) (ignored) files.

31022, 31329 - Status icons of directories in Eclipse do not correctly reflect status of files in the directory

In previous releases, the directory icons in Eclipse indicated that the contents of the directory had changed after a promote operation. This problem has been corrected in the current release.

32262 - Sharing an Eclipse project on a substituted drive causes a java exception

In previous releases, the AccuRev Plug-In for Eclipse produced a `NullPointerException` if a user created a substituted drive to the local workspace's parent directory, imported a Java project into the workspace, and then selected **Team > Share Project**. This problem has been corrected in the current release.

32305 - Login dialog not indicating incorrect port number for server

In previous releases, login would fail silently if an incorrect port number, such as 5050, was specified for the server. An error message explaining the cause of the failure has been added in the current release.

32469 - Performing a Team > Share operation on a project in an existing AccuRev workspace throws an exception

In previous releases, performing a **Team > Share** operation on an existing AccuRev workspace caused a null pointer exception. This problem has been corrected in the current release.

32503 - Delay Workbench access until Plug-In is fully started

In previous releases, AccuRev Plug-In for Eclipse was allowing user access to the Eclipse Workbench before the AccuRev Plug-In for Eclipse had fully started which, in some cases, caused slow performance or threw processing exceptions when referenced objects were null. This problem has been corrected in the current release.

32614 - Issue list in the Synchronizing View in Eclipse not cleared upon completion of synchronize operation

In previous releases, synchronizing Eclipse with AccuRev did not clear the stale files from the issue list in the **Synchronizing View**. This problem has been corrected in the current release.

33021 - Cannot filter external files in the Synchronizing View perspective

In previous releases, users were not able to filter out external files in the **Synchronizing View** perspective in Eclipse. In the **Outgoing changes** mode, having a large number of external files made it difficult for users to view their changes. Two methods of filtering out external files from the **Synchronizing View** perspective have been added in the current release:

- Designating the external items as `ignored` hides these files from the **Outgoing files** list
- Using the **Commit All** option shows only modified files in the first page of the **Commit All** window and only external files in the second page.

33681 - The Select Issue dialog box is empty during a promote operation

In previous releases, when a user performed a promote operation, it was possible for the **Select Issue** dialog box to contain no issues. This problem has been corrected in the current release.

34199 - Creating a new Plug-In project in Eclipse produces an exception

In previous releases, attempting to create a Plug-In project in Eclipse using AccuRev Plug-In for Eclipse generated a Java exception error. This problem has been corrected in the current release.

Version 2013.5

31152 - The Promote dialog box appears unexpectedly

In previous releases, the **Promote** dialog box appeared unexpectedly when the user shared a project under certain conditions, such as when the project status had been excluded or was external. This problem has been corrected in the current release.

31081 - AccuRev Plug-In for Eclipse generates exceptions if the Eclipse workspace is unavailable

In previous releases, some users experienced problems when AccuRev Plug-In for Eclipse loaded and attempted to access the Eclipse workspace before it became available. This problem has been corrected in the current release.

31080 - Add to Ignore option fails to handle Japanese file names correctly

In previous releases, the **Team > Add to Ignore** option did not work correctly when file names contained Japanese characters. This problem has been corrected in the current release.

31079 - Attempting to log on in Japanese produces extraneous characters

In previous releases, Japanese characters appeared twice when users attempted to log in using the Web UI in Eclipse. This problem has been corrected in the current release.

30914 - The FilteredEventReader produces an error with IBM's JVM 6

In previous releases, using the `FilteredEventReader` command with IBM's implementation of JVM 6 in version 8 of the IBM Rational Application Developer produced an error. This problem has been corrected in the current release.

30843 - Debug information enhanced to track the servers.xml file

This release of AccuRev Plug-In for Eclipse contains additional debugging information related to the `servers.xml` file for the purpose of tracking the location of this file.

30794 - Cannot promote changes if a pre-promote trigger exists

In previous releases, AccuRev Plug-In for Eclipse users were not able to promote changes when a pre-promote trigger existed, except to the **Default** issue. This problem has been corrected in the current release.

30780 - Cannot promote changes if the client dispatch promote trigger is not set

In previous releases, AccuRev Plug-In for Eclipse users could only promote changes to an issue if the client dispatch promote trigger was set. This problem has been corrected in the current release.

30587 - The message.properties file contains duplicate entries

In previous releases, the following duplicated keys in the `messages.properties` file caused problems with some third-party tools: `LOGIN`, `COMPARE_LABEL`, `ISSUES_COLUMN`. These duplicated keys have been eliminated and this problem has been corrected in the current release.

30394 - AccuRev Plug-In for Eclipse does not work with RAD 8.0.4

In previous releases, the AccuRev Plug-In for Eclipse did not work correctly with IBM Rational Application Developer version 8.0.4. This problem has been corrected in the current release.

30236 - The Merge/Diff tool does not handle UTF-8 characters in the filename

In previous releases, the Merge/Diff tool would not start if a file name contained a UTF-8 character. This problem has been corrected in the current release.

28779 - Using Mylyn with AccuWork

The AccuRev Plug-In for Eclipse now supports using Mylyn with AccuWork. For more information, see [Integration with Mylyn](#).

27590 - The Diff Against menu option should be moved away from Revert To option

In previous releases, the **Diff Against > Backed Version** menu option was adjacent to the **Revert To > Backed Version** menu option. In the current release, the **Diff Against Backed Version** has been moved adjacent to the Version Browser option.

Integration with Mylyn

AccuRev Plug-In for Eclipse supports an integration between AccuWork and Mylyn. The Mylyn Plug-In for Eclipse manages user tasks. You can use the AccuRev Plug-In for Eclipse integration with Mylyn to perform AccuWork procedures within the Eclipse interface, such as creating and managing AccuWork queries and issues.




Note: The Mylyn Plug-In for Eclipse is not included when you install AccuRev Plug-In for Eclipse. If you want to use the integration between AccuWork and Mylyn, you must separately install the Mylyn Plug-In for Eclipse.

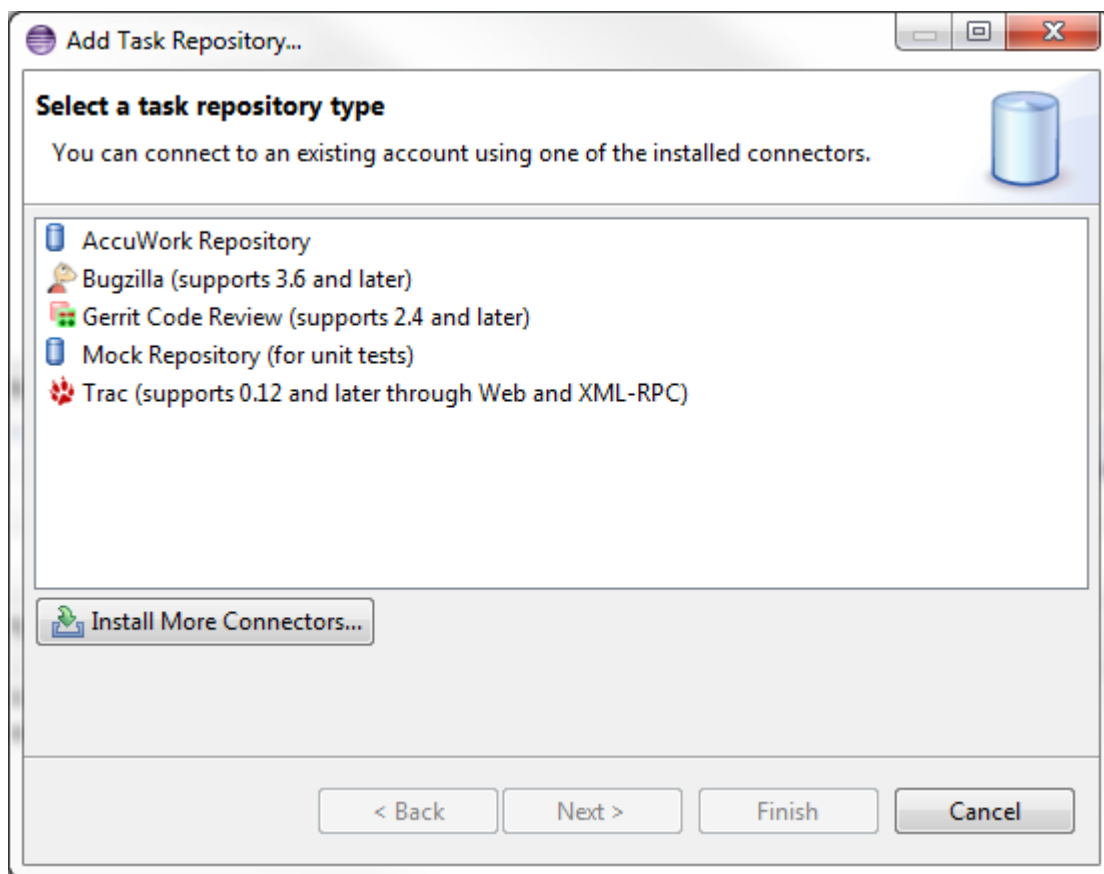
When you install AccuRev Plug-In for Eclipse version 2013.5 or later, the integration with Mylyn is automatically active if the Mylyn Plug-In for Eclipse has been installed. The procedures described in the following sections assume that you have installed the Mylyn Plug-In for Eclipse.

Adding an AccuWork Task Repository

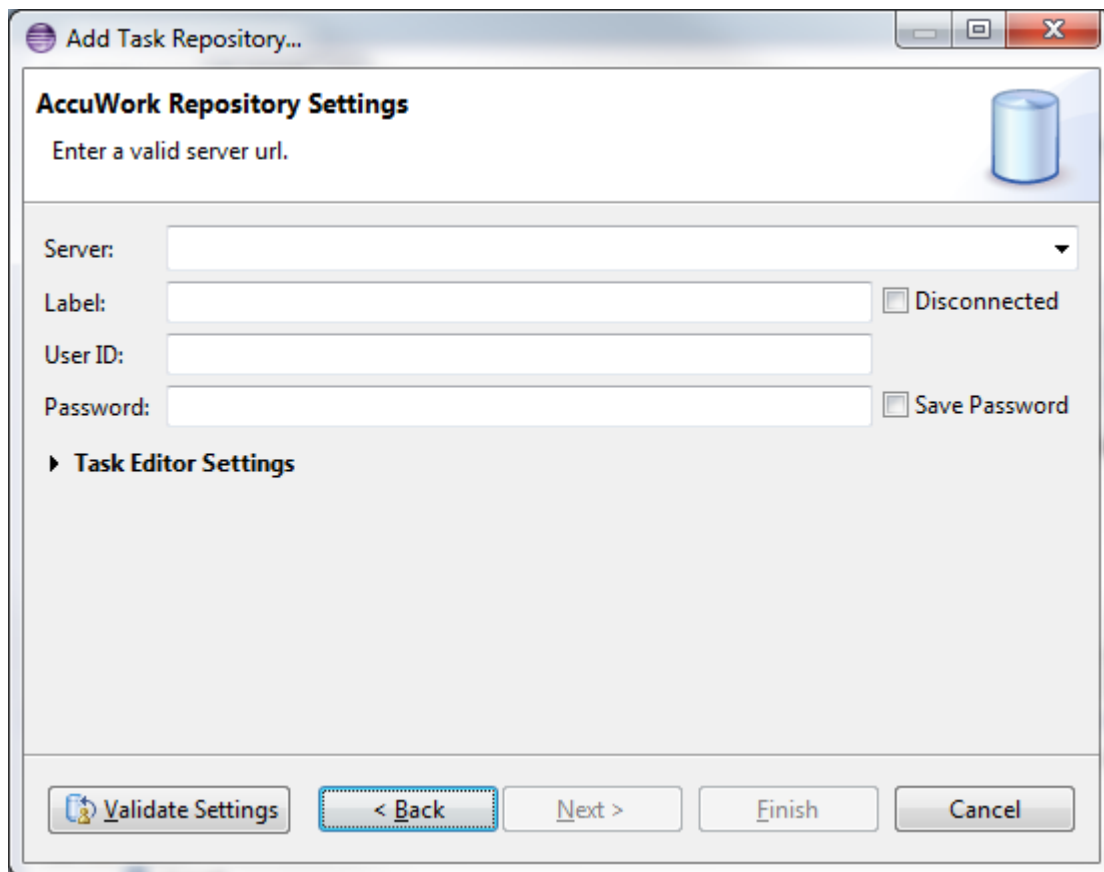
Before using the AccuRev Plug-In for Eclipse integration with Mylyn, you must add an AccuWork task repository.

To add an AccuWork task repository:


1. In Eclipse, open the **Mylyn** view by selecting **Window > Show View > Other > Mylyn > Task Repositories**. The **Task Repositories** tab is active.
2. Click the **Add Task Repository** button . The **Select a task repository type** page of the **Add Task Repository** wizard appears:



3. Select the `AccuWork Repository` option and click **Next**. The **AccuWork Repository Settings** page of the **Add Task Repository** wizard appears:



4. Specify the following:

- | | |
|-----------------------------|--|
| Server | Your AccuRev Server. The server information you enter should take the following form: <code><server_name> : <port_number></code> . |
| |  Note: The server must be one of the AccuRev Servers that is already available to you through the AccuRev Plug-In for Eclipse. |
| Label | A name you designate for your AccuRev Server. |
| Disconnected | The default state of the AccuRev Server is disconnected. |
| User ID | Your AccuRev user name. |
| Password | Your AccuRev password. |
| Save Password | Indicates that you want Eclipse to remember your password between sessions. |
| Task Editor Settings | Optional settings that specify the look and feel of the Task Editor . |

5. Click **Validate Settings** to confirm the accuracy of the AccuRev Server settings.

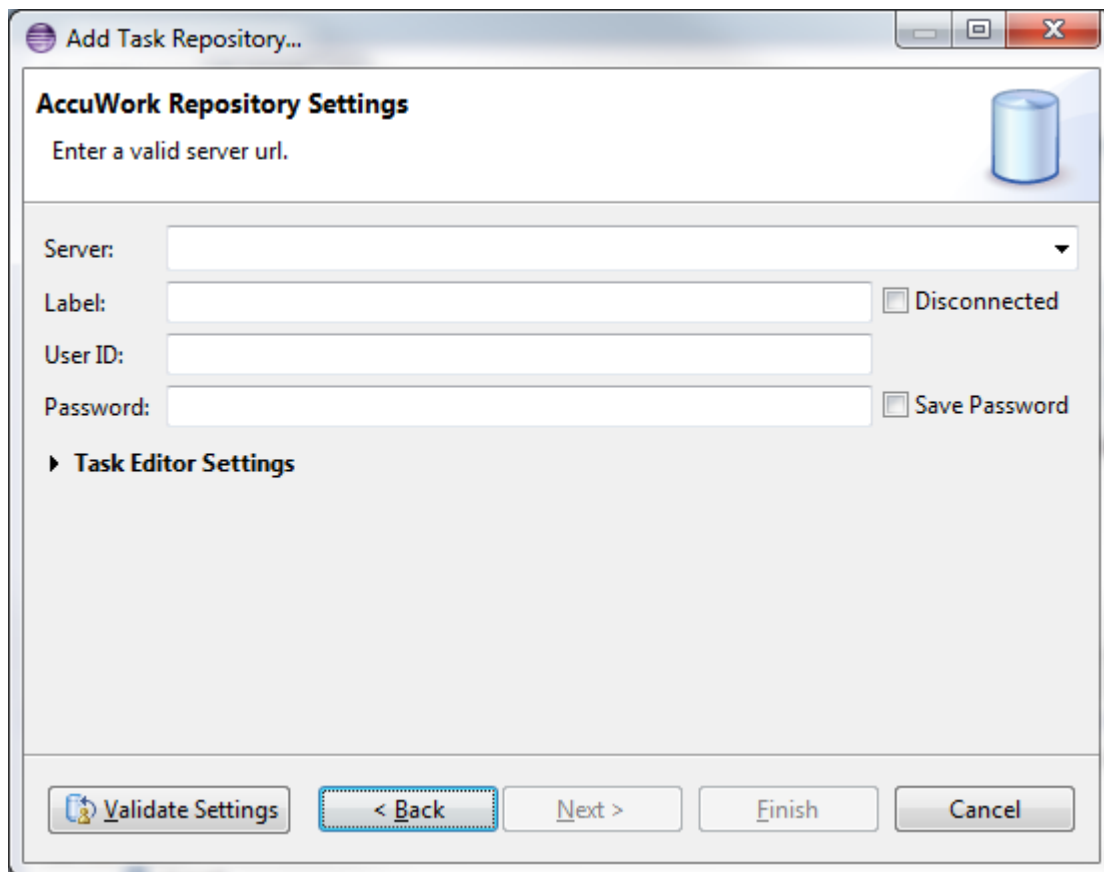
6. Click **Finish** to apply the current settings and dismiss the dialog box.

Logging In to an AccuWork Task Repository

You must be connected to an AccuWork task repository before you can create and run AccuWork queries.

To log in to an AccuWork Task repository:

1. In Eclipse, open the **Mylyn** view by selecting **Window > Show View > Other > Mylyn > Task Repositories**. The **Task Repositories** tab is active.
2. Right-click the name of your **AccuRev Task** repository and select **Properties**. The **Properties for Task Repository** window appears:



Make sure your connection settings are valid.

3. Click **Validate Settings** to confirm the accuracy of the AccuRev Server settings.
4. Click **Finish** to validate the settings and log in.

Removing an AccuWork Task Repository from Your Mylyn View

If you are no longer using an AccuWork task repository, you can remove it from your Mylyn view. Note that the following procedure only removes the repository from your view. The repository still exists and you can reconnect to it at a later time. See [Adding an AccuWork Task Repository](#) for more information.

To remove an AccuWork task repository from your Mylyn view:

1. In Eclipse, open the **Mylyn** view by selecting **Window > Show View > Other > Mylyn > Task Repositories**. The **Task Repositories** tab is active.
2. Right-click the name of the AccuWork task repository and select **Delete**.

Working with AccuWork Queries

The following sections contain information about creating, running, and editing AccuWork queries when using Mylyn tasks.


Before running AccuWork queries in a Mylyn view, you must specify a default query in the **AccuWork Query Browser** by right-clicking an existing query and selecting **Set as Default** from the context menu.



Note: The query results represent the AccuWork issues returned by both your Mylyn query and your AccuWork default query.

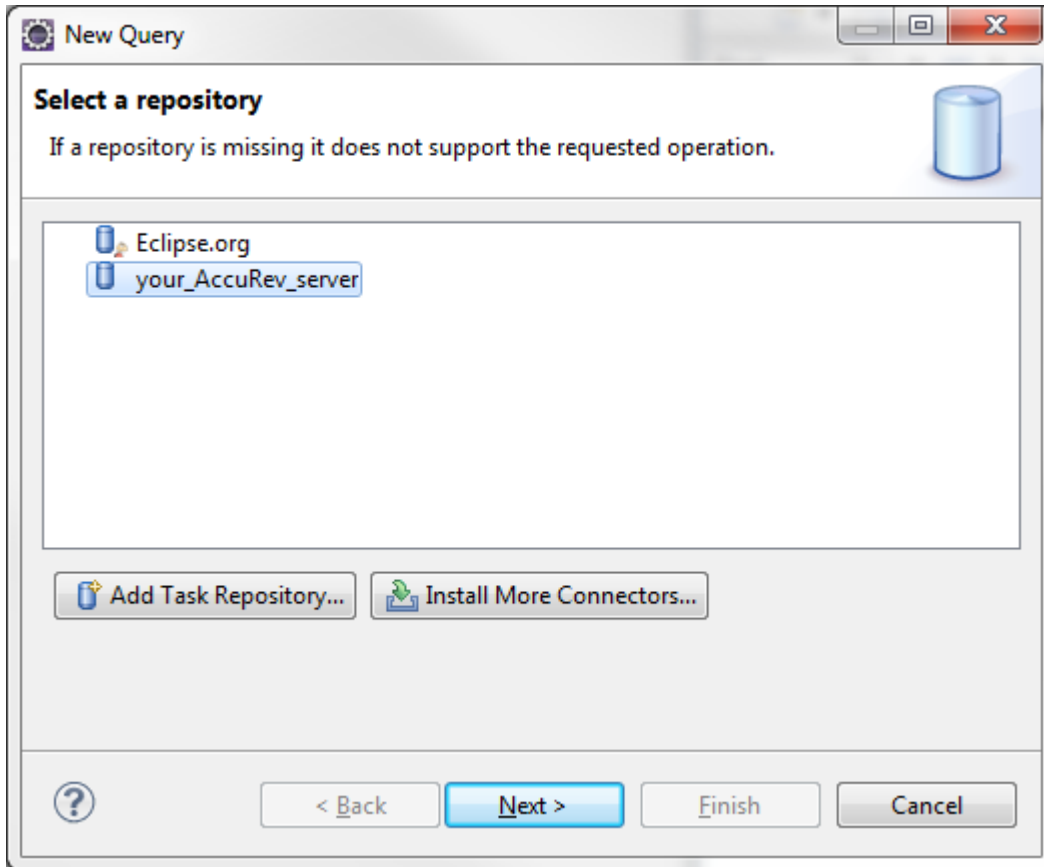
Creating an AccuWork Query

You can create and run AccuWork queries from within your Eclipse development environment by using the AccuRev Plug-In for Eclipse integration with Mylyn.

 **Note:** Before running AccuWork queries in a Mylyn view, you must specify a default query in the **AccuWork Query Browser** by right-clicking an existing query and selecting **Set as Default** from the context menu.

To create an AccuWork query:

1. In Eclipse, open the Mylyn view by selecting **Window > Show View > Other > Mylyn > Task List**. The **Task List** tab is active.
2. On the **Mylyn Task List** tab, click the **New Task** option list and select **New Query**. The **New Query** dialog box appears:



3. Select the name of your AccuRev Server and click **Next**. The **Edit Query** dialog box appears:

Edit Query

AccuWork search query parameters

Select query parameters

Query Title:

Type: Include Completed

Owner: Depot:

? < Back Next > Finish Cancel

4. Specify settings in the **Edit Query** dialog box

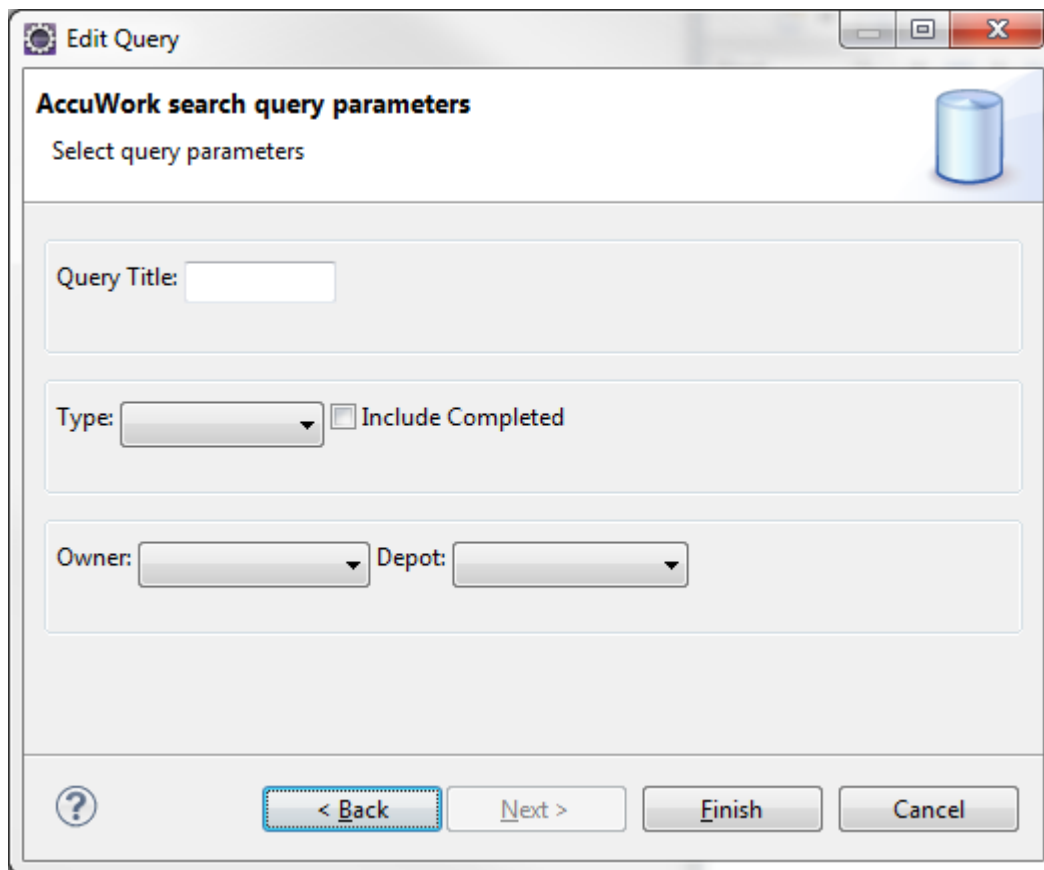
Query Title	A name for your new query.
Type	The kind of query you want to construct, such as: defect, task, enhancement, story, or requirement.
Include Completed	Indicates that you want the query to return defects, tasks, enhancements, stories, or requirements that have already been completed.
Owner	The owner of the query. Typically, you would select your own user name, unless you are assigning queries to other users.
Depot	The name of the AccuRev depot that you are querying.

5. Click **Finish**. The new query appears in the **Task List** tab in your Mylyn view, followed by the name of your AccuRev Server.

Editing an AccuWork Query

To edit an AccuWork query:

1. In Eclipse, open the Mylyn view by selecting **Window > Show View > Other > Mylyn > Task List**. The **Task List** tab is active.
2. On the **Mylyn Task List** tab, right-click the name of the query and select **Properties** from the context menu. The **Edit Query** dialog box appears:

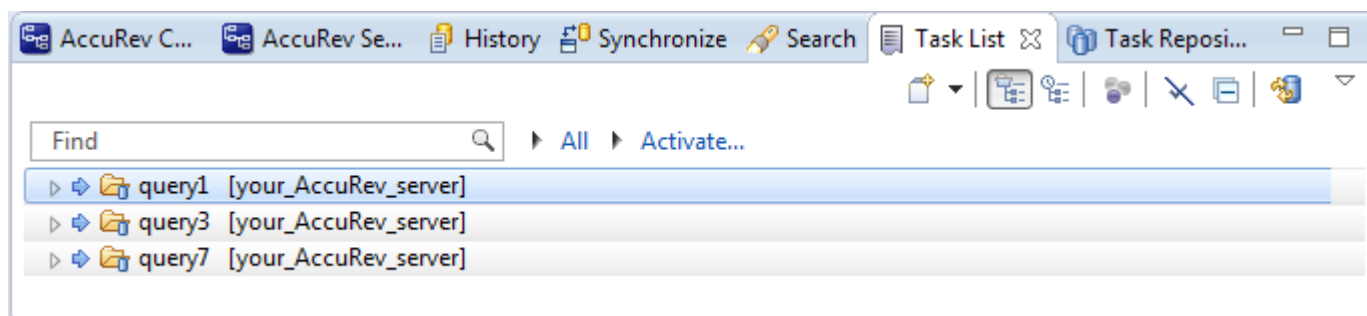


3. Change the settings to edit the query.
4. Click **Finish** to commit your changes.

Running an AccuWork Query

To run an AccuWork query in a Mylyn view:

1. In Eclipse, open the Mylyn view by selecting **Window > Show View > Other > Mylyn > Task List**. The **Task List** tab is active.
2. Select the query you want to run and press `Enter`, or double-click the name of the query. If the query conditions are satisfied, the results of the query appear in the **Mylyn Task List** tab beneath the query:



3. You can open any item that is returned by your query by selecting the item and pressing `Enter` or by double-clicking the item. You can also right-click the item and select an option from the context menu to perform a Mylyn task operation.

Version 2013.4

30364, 30322 - Improvements to cut/copy/paste and delete/remove performance

In previous releases, performing cut/copy/paste and delete/remove operations on individual files took longer than expected because AccuRev Plug-In for Eclipse was getting status on both the file's directory and the workspace parent. This problem has been corrected in the current release, and AccuRev Plug-In for Eclipse now performs required operations on individual files when appropriate.

30113 - Eclipse refresh no longer refreshes AccuRev status

In previous releases, refreshing a project using Eclipse (F5, **File > Refresh**, or choosing **Refresh** from the context menu in the **Project Explorer**) caused AccuRev Plug-In for Eclipse to perform a full refresh of the AccuRev statuses. This problem has been corrected in the current release, and AccuRev Plug-In for Eclipse now performs a complete refresh of AccuRev statuses only when using the **Team > Refresh > Selected Projects** (or **All Projects**) menu.

29957 - Improvements in elink management

In previous releases, AccuRev Plug-In for Eclipse did not properly manage multiple elinks with the same target, which sometimes resulted in some elinks not getting refreshed. This problem has been corrected in the current release.

29899 - AccuRev Plug-In for Eclipse no longer starts other jobs when refreshed

In previous releases, AccuRev Plug-In for Eclipse tried to resume dormant jobs started by other IDEs when it was refreshed. This problem has been corrected in the current release.

27589 - Cannot promote without a default query

In previous releases, you could not promote changes against an issue unless you had defined a default query. AccuRev Plug-In for Eclipse would display a dialog box which allowed you to promote against the default issue only. This problem has been corrected in the current release, and you can now select an issue number when promoting.

Version 2013.3

27587 - Add to Ignore

AccuRev Plug-In for Eclipse has a new feature, **Team > Add to Ignore**, that allows you to quickly specify one or more files that you want AccuRev to ignore. To use this feature:

1. Locate the external files you want AccuRev to ignore (manually in the **Package Explorer**, or use **Team > AccuRev Searches > External**, for example).
2. Select the files you want AccuRev to ignore.
3. Right-click, and choose **Team > Add to Ignore**.

AccuRev Plug-In for Eclipse creates a `.acignore` file in that directory configured with the files you selected. If a `.acignore` file already exists in that directory, AccuRev Plug-In for Eclipse updates it with the names of the files.

28170 - AccuRev Plug-In for Eclipse did not recognize existing workspaces after mapping drives

In previous releases, AccuRev Plug-In for Eclipse did not recognize existing workspaces if the location of the workspace was specified using a mapped drive. For example, imagine creating a workspace at `c :`

\accurev\my_workspaces\acme and then mapping c:\accurev\my_workspaces to J:, so the workspace path is now J:\acme. If you subsequently tried to access the acme workspace through Eclipse using J:\acme (to share or create a new project, for example), AccuRev Command Line Interface would be unaware of the existing workspace. This problem has been corrected in the current release.

28745 - AccuRev Plug-In for Eclipse could not get status for element-link directory structures

In previous releases, AccuRev Command Line Interface was not always able to determine the status of packages and files within an *element-link* (elink) directory. This problem has been corrected in the current release.

29014 - AccuRev Plug-In for Eclipse hangs the Eclipse Project Explorer

In previous releases some operations performed in the **Project Explorer** would cause Eclipse to hang. This problem has been corrected in the current release.

29309 - AccuRev servers.xml moved to user's home directory

In previous releases, AccuRev created the `servers.xml` file in the AccuRev \bin directory. This file contained server and session information, including the session security token. If the AccuRev Plug-In for Eclipse user did not have access to or permissions for the AccuRev \bin directory, the `servers.xml` file did not get created, AccuRev Plug-In for Eclipse would prompt the user to log in to AccuRev each time an operation required a call to the server. This problem has been corrected in the current release.

29341 - Kept Status label added to available Label Decorations

In previous releases, the **Kept Status** label was not available on the **Label Decorations** page of the **Preferences** dialog box (**Team > AccuRev > Label Decorations**). This problem has been corrected in the current release.













The new label decoration for an element with `Kept` status is a white check on a blue background.

Version 2013.2

This section describes changes to AccuRev Plug-In for Eclipse version 2013.2.

27592 - New label decoration icons for AccuRev statuses

AccuRev Plug-In for Eclipse introduces new label decoration icons to represent AccuRev statuses. The new icons are larger, easier to read at a glance, and easier to understand. Changes to the status icons are summarized in the following table:

Status	Previous Releases	Version 2013.2
Modified		
Backed		
Member		
Missing		
Stale		
Overlap		

Default text label decorators remain unchanged.

28192 - Procedures for setting up UTF-8 in Eclipse

The *User's Guide* now includes a section on setting up UTF-8 in Eclipse. See *Working with Eclipse Projects* for more information.

28207 - New Quick Start page

The download page for AccuRev Plug-In for Eclipse has been enhanced to get you up and running with AccuRev Plug-In for Eclipse. The new **Quick Start** page provides:

- Direct access to the AccuRev update site URL and .zip download.
- Simplified procedures that describe how to install, upgrade, and use AccuRev Plug-In for Eclipse to add an Eclipse project to AccuRev, share an Eclipse project with AccuRev, and create a new workspace based on an Eclipse project.

28356 - New: Send to Issue, Remove from Issue operations available

AccuRev Plug-In for Eclipse now provides support for **Send to Issue** and **Remove from Issue** operations. These operations support third-party ITS keys as well as AccuWork issue numbers and are available from the element context menu, right-click the element, and choose **Team > Send To Issue** or **Team > Remove From Issue**.

28819 - Multiple projects on the same AccuRev Server no longer require multiple logins

In previous releases, if you had multiple Eclipse projects associated with AccuRev workspaces on the same AccuRev Server, AccuRev Plug-In for Eclipse would prompt you to log in for each project individually.

This problem has been corrected in the current release, project and workspace information is now grouped for the same AccuRev Server requiring only a single login when the session expires or has not been established.

28970 - Single Plug-In for both Eclipse and IBM RAD

In previous releases, AccuRev provided separate AccuRev Plug-In for Eclipse packages for Eclipse and IBM Rapid Application Development (RAD), an Eclipse-based IDE. As of Version 2013.2, the AccuRev Plug-In for Eclipse can be used on both Eclipse and IBM RAD.

29323 - Promote uses AccuRev session established in AccuRev Plug-In for Eclipse

In previous releases, the `Promote` operation did not use the AccuRev session created by logging in to AccuRev through AccuRev Plug-In for Eclipse. Because it relied on the AccuRev session established externally - through the AccuRev Command Line Interface or AccuRev Client, for example - the Promote operation would fail when that session expired. This problem has been corrected in the current release.

29401 - Diff by Transaction fails in History Browser if you are not logged in to AccuRev through the AccuRev Plug-In for Eclipse

In previous releases, the **Diff by Transaction** operation would fail when run from the **History Browser** unless you were logged in to AccuRev through AccuRev Plug-In for Eclipse (and not through the AccuRev Command Line Interface or AccuRev Client). This problem has been corrected in the current release.

In addition, AccuRev Plug-In for Eclipse now works with the Eclipse diff tool.

Version 2013.1

This section describes changes to AccuRev Plug-In for Eclipse version 2013.1.

27581 - Stream names displayed in Merge From and Patch From views

AccuRev Plug-In for Eclipse now displays stream names in **Merge From** and **Patch From** views. In previous releases, AccuRev Plug-In for Eclipse displayed stream numbers in these views.

27586, 27603 - Support for RAD 6, 7, and 8

AccuRev Plug-In for Eclipse version 2013.1 supports IBM RAD 6, RAD 7, and RAD 8.

27601 - Support for Eclipse 4.2 (Juno)

AccuRev Plug-In for Eclipse 2013.1 supports Eclipse 4.2 (Juno).

27621 - New: Browse button added to AccuRev page in Preferences

AccuRev Plug-In for Eclipse version 2013.1 adds a **Browse** button to the **AccuRev CLI** field on the **AccuRev** page in the **Preferences** window (**Window > Preferences**). This button allows you to navigate to the location of the AccuRev executable and capture the path. In previous releases, the value for the **AccuRev CLI** field had to be entered manually.

27705 - Synchronize view shows external objects

The Eclipse **Synchronize view** now shows objects (files and directories) that have not been kept in AccuRev. (Such objects have a status of `(external)` in AccuRev.) For example, when you create a new project, objects like the `.settings` directory and the `.project` file will be displayed on the Eclipse Synchronize view.

27722 - Support for elinked directories that are outside the Eclipse project

AccuRev Plug-In for Eclipse now allows you to create *elinks* in the Eclipse project hierarchy to resources that are under AccuRev control. In previous releases using AccuRev Plug-In for Eclipse with Eclipse 3.5 (Galileo) and earlier, AccuRev Plug-In for Eclipse would throw an error when opening Eclipse projects that used elinks in this fashion.

27751 - Error in procedure for setting up a local update site

In previous releases, the procedure in the section [Setting Up a Local Update Site](#) in this guide incorrectly referred to the `update-site.zip`. This problem has been corrected in the current release and now refers to the `.zip` file for the current release (`AccuRevPlugIn_Eclipse_2013_2.zip`, for example).

27755 - Diff for elements and transactions now supported in the History view

The **History view** in AccuRev Plug-In for Eclipse version 2013.1 supports Diff functionality for both transactions and elements:

- You can right-click a transaction and choose **Diff Against > Other Version** or **Diff Against > File in the Workspace**.
- You can right-click an element associated with the current transaction and choose **Diff Against > Previous Transaction**.

27797 - AccuRev Plug-In for Eclipse version number displayed in Eclipse Preferences

The version number of the currently installed AccuRev Plug-In for Eclipse is now displayed in Eclipse Preferences. To view the version number here, **Window > Preferences**. The new **Version Details** group box lists:

Version	The currently installed version.
Date	The date this version was built.

Transaction The AccuRev transaction number associated with the version's build.



Tip: AccuRev Plug-In for Eclipse version information is also available from the **Help** menu. Choose **Help > About Eclipse SDK**, and then click either the **AccuRev** icon or the **Installation Details** button on the **About Eclipse SDK** dialog box.

28042 - AccuRev Plug-In for Eclipse promote sequence matches that in AccuRev GUI

In AccuRev Plug-In for Eclipse version 2013.1, if you have change packages implemented at your site, AccuRev Plug-In for Eclipse now prompts you to first select an issue to associate with the changes you are promoting and then enter an optional comment. In previous releases, AccuRev Plug-In for Eclipse prompted you for the comment before asking you to choose an issue to promote against.

28257 - AccuRev Plug-In for Eclipse supports Eclipse 4.2 (Juno) on MacOS 10.7 (Lion)

AccuRev Plug-In for Eclipse now supports Eclipse 4.2 (Juno) installed on the MacOS 10.7 (Lion) operating system.

Contacting Micro Focus

Micro Focus is committed to providing world-class technical support and consulting services. Micro Focus provides worldwide support, delivering timely, reliable service to ensure every customer's business success.

All customers who are under a maintenance and support contract, as well as prospective customers who are evaluating products, are eligible for customer support. Our highly trained staff respond to your requests as quickly and professionally as possible.

Visit <http://supportline.microfocus.com/assistedservices.asp> to communicate directly with Micro Focus SupportLine to resolve your issues, or email supportline@microfocus.com.

Visit Micro Focus SupportLine at <http://supportline.microfocus.com> for up-to-date support news and access to other support information. First time users may be required to register to the site.

Information Needed by Micro Focus SupportLine

When contacting Micro Focus SupportLine, please include the following information if possible. The more information you can give, the better Micro Focus SupportLine can help you.

- The name and version number of all products that you think might be causing an issue.
- Your computer make and model.
- System information such as operating system name and version, processors, and memory details.
- Any detailed description of the issue, including steps to reproduce the issue.
- Exact wording of any error messages involved.
- Your serial number or works order (WO) number.

To find out these numbers, look in the subject line and body of your Electronic Product Delivery Notice email that you received from Micro Focus, or on the box in which the product was supplied, and on the red card supplied in the DVD case .

Index

A

AccuRev Diff Tool must be on your Linux/Unix PATH 20
adding AccuRev executables to OS X PATH 19
adding the AccuRev update site 5

C

changes
 2013.3 35
 2013.4 35
 2013.5 27
 version 2013.1 37
 version 2013.2 36
 version 2014.1 25
 version 2015.1 24
 version 2016.1 24
 Version 2016.1 HF1 24
 Version 2017.1 23
configuration steps for the AccuRev Web UI 18
configure access to the AccuRev Web interface 18
contact information 40
Customer Care 40

D

downloads 40

E

enabling AccuRev Diff tool to work as standalone for OS X
 19

I

installation steps 6
installation topics 5
installing on Eclipse 4.6.x 5
installing on Eclipse C/C++ development tooling installation
 16
installing on Wind River Workbench 16
integration with Mylyn 28
introduction 4

M

Mylyn
 add AccuWork task repository 28
 creating AccuWork queries 31
 edit an AccuWork query 33
 integration 28
 log in to AccuWork task repository 30
 remove AccuWork task repository from view 31
 run an AccuWork query 34
 working with AccuWork queries 31

P

platform support 5
Product Support 40

R

release highlights 4
release notes 21

S

serial number 40
setting up a local update site. 17
SupportLine 40

U

uninstalling the plug-in 17

V

verifying the installation 17
version 2018.1 22

W

WebSync 40
works order number 40