



ArcSight SmartConnectors

Software Version: 8.4.3

Configuration Guide for Microsoft IIS Syslog SmartConnector

Document Release Date: October 2023

Software Release Date: October 2023

Legal Notices

Open Text Corporation

275 Frank Tompa Drive, Waterloo, Ontario, Canada, N2L 0A1

Copyright Notice

Copyright 2023 Open Text.

The only warranties for products and services of Open Text and its affiliates and licensors (“Open Text”) are as may be set forth in the express warranty statements accompanying such products and services. Nothing herein should be construed as constituting an additional warranty. Open Text shall not be liable for technical or editorial errors or omissions contained herein. The information contained herein is subject to change without notice.

Trademark Notices

“OpenText” and other Open Text trademarks and service marks are the property of Open Text or its affiliates. All other trademarks or service marks are the property of their respective owners.

Documentation Updates

The title page of this document contains the following identifying information:

- Software Version number
- Document Release Date, which changes each time the document is updated
- Software Release Date, which indicates the release date of this version of the software

To check for recent updates or to verify that you are using the most recent edition of a document, go to:

<https://www.microfocus.com/support-and-services/documentation>

Contents

Configuration Guide for Microsoft IIS Syslog SmartConnector	4
Product Overview	5
Configuration	6
SyslogAgent Configuration	6
Configure the Syslog SmartConnectors	8
The Syslog Daemon SmartConnector	8
The Syslog Pipe and File SmartConnectors	9
Configure the Syslog Pipe or File SmartConnector	9
Install the SmartConnector	11
Syslog Installation	11
Prepare to Install Connector	11
Install Core Software	12
Set Global Parameters (optional)	12
Select Connector and Add Parameter Information	13
Select a Destination	15
Complete Installation and Configuration	15
Run the SmartConnector	17
Device Event Mapping to ArcSight Fields	18
IIS Event Mappings	18
Send Documentation Feedback	20

Configuration Guide for Microsoft IIS Syslog SmartConnector

This guide provides information for installing the SmartConnector for Microsoft IIS Syslog and configuring the device for event collection. This SmartConnector is supported for installation on Windows platforms only. For more information, see [Technical Requirements](#).

Intended Audience

This guide provides information for IT administrators who are responsible for managing the ArcSight software and its environment.

Additional Documentation

The ArcSight SmartConnector documentation library includes the following resources:

- [Technical Requirements Guide for SmartConnector](#), which provides information about operating system, appliance, browser, and other support details for SmartConnector.
- [Installation and User Guide for SmartConnectors](#), which provides detailed information about installing SmartConnectors.
- [Configuration Guides for ArcSight SmartConnectors](#), which provides information about configuring SmartConnectors to collect events from different sources.
- [Configuration Guide for SmartConnector Load Balancer](#), which provides detailed information about installing Load Balancer.

For the most recent version of this guide and other ArcSight SmartConnector documentation resources, visit the [documentation site for ArcSight SmartConnectors 8.4](#).

Contact Information

We want to hear your comments and suggestions about this book and the other documentation included with this product. You can use the comment on this topic link at the bottom of each page of the online documentation, or send an email to MFI-Documentation-Feedback@opentext.com.

For specific product issues, [contact Open Text Support for Micro Focus products](#).

Product Overview

The Microsoft Internet Information Server (IIS) helps organizations increase Web site and application availability while lowering system administration costs. Microsoft IIS can send its application events to the Datagram SyslogAgent, which, in turn, sends event logs and application logs to a Datagram SyslogServer.

The Datagram SyslogAgent is installed as a service on Microsoft Windows clients and servers to provide syslog compatibility. It is based upon NTSyslog by SaberNet.net, which released it under the GNU license. The entries in the Event log (and, when specified, the Application logs) are sent to the Datagram SyslogServer.

Configuration

For the syslog connector, there is no log file to read to get the format when logged to the syslog server. Because the format is required for the connector to pull events, ArcSight recommends stopping the syslog service before running the SmartConnector, then restarting the syslog service for the connector to be able to get the format and begin processing events.

SyslogAgent Configuration

For complete installation and configuration information for Datagram SyslogAgent and SyslogServer, see <http://www.syslogserver.com/manuals.html>.

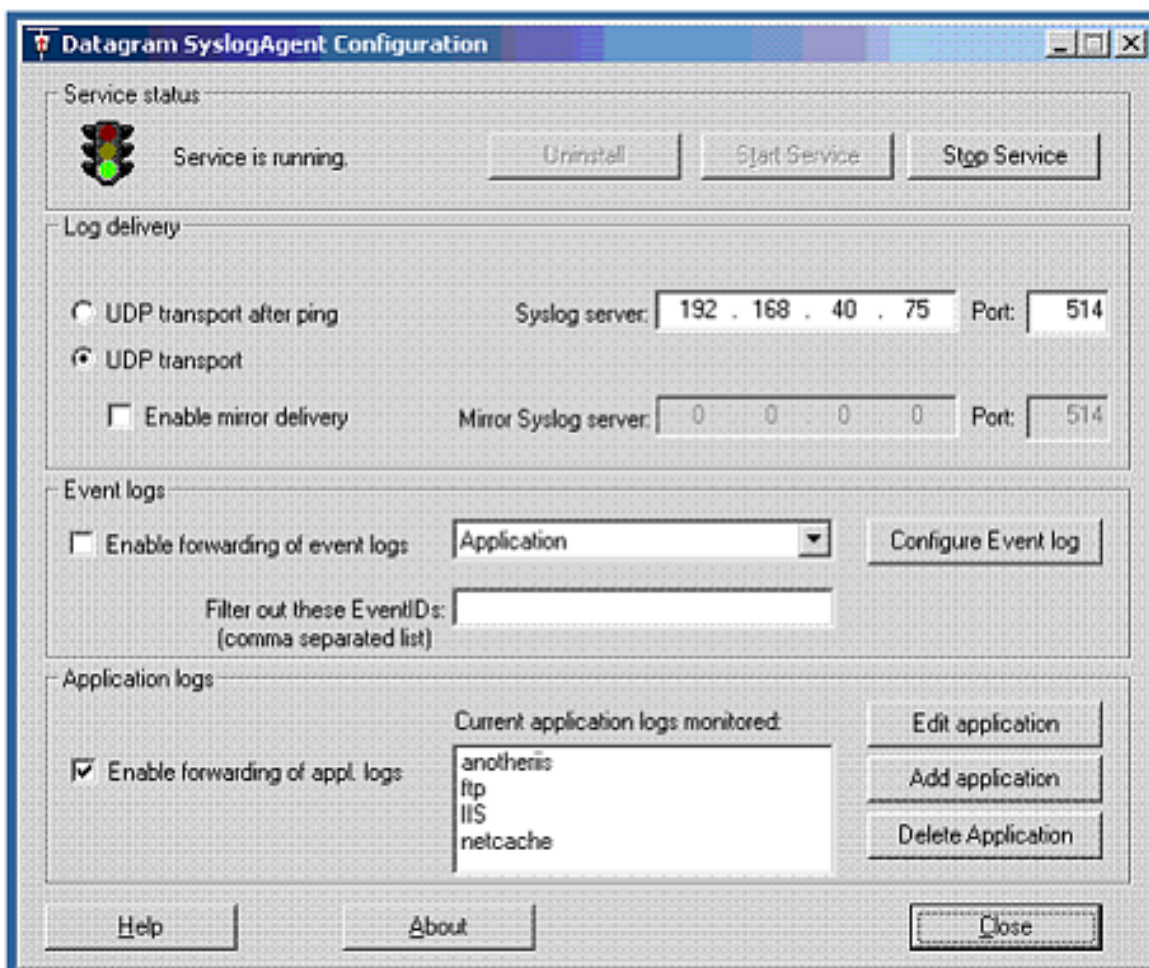
Datagram SyslogAgent supports forwarding of application logs to SyslogServer. By default, no application logging is configured.

Notes:

- The maximum number of configured application logs is ten; if more logs are configured, event loss can occur.
- If Application logs have the same number of tokens in the format line, incorrect mapping of event content can occur.

To enable application log forwarding for Microsoft IIS:

- 1 Open the Datagram SyslogAgent Configuration window.



- 2 Under "Log delivery," be sure the IP address and port for the syslog server has been entered.
- 3 Under "Event logs," check the box for "Enable forwarding of event logs" and leave the default value of Application selected.
- 4 Under "Application logs," click on **Edit Application** or **Add Application** to open the **Configure application logging** window.
- 5 Configure the process name as `datagram_iis_syslog` ("Parse process name, or use").
- 6 For Severity, select **Information**.
- 7 Under "Syslog protocol conformity," make sure no boxes are checked.
- 8 Under "Ignore settings," make sure no boxes are checked.
- 9 After confirming your changes, a dialog box is displayed to ask whether to restart the service. Accept to restart for your changes to take effect.

Further syslog configuration can be accomplished from the Syslogserver Configuration Properties window once the syslog service has been installed and started.

Configure the Syslog SmartConnectors

The three ArcSight Syslog SmartConnectors are:

- Syslog Daemon
- Syslog Pipe
- Syslog File

The Syslog Daemon SmartConnector

The Syslog Daemon SmartConnector is a syslogd-compatible daemon designed to work in operating systems that have no syslog daemon in their default configuration, such as Microsoft Windows. The SmartConnector for Syslog Daemon implements a UDP receiver on port 514 (configurable) by default that can be used to receive syslog events. Use of the TCP protocol or a different port can be configured manually.

If you are using SmartConnector for Syslog Daemon, add the following statement in the `rsyslog.conf` file to forward Oracle Audit events so that Syslog Daemon will start receiving events: `*.* @@(remote/local-host-IP):514`

Sample example: `local1.warning @@10.0.0.1:514`



You can either use `*.*` to read all Syslog events or you can filter specific events by replacing regex with the specific event name. For example: `*.* @@(remote/local-host-IP):514` and `local1.warning @@10.0.0.1:514`



Use `@@` to send events over a TCP connection and use `@` to send events over an UDP connection.

If you are running SmartConnector for Syslog Daemon on the same machine as the Oracle server, you must provide the IP address of the local host. If you want to forward events to other machines, you must provide the IP address of the same.



Messages longer than 1024 bytes may be split into multiple messages on syslog daemon; no such restriction exists on syslog file or pipe.

The Syslog Pipe and File SmartConnectors

When a syslog daemon is already in place and configured to receive syslog messages, an extra line in the syslog configuration file (`rsyslog.conf`) can be added to write the events to either a *file* or a system *pipe* and the ArcSight SmartConnector can be configured to read the events from it. **In this scenario, the ArcSight SmartConnector runs on the same machine as the syslog daemon. Therefore, you must do additional configurations for the ArcSight syslog file or syslog pipe SmartConnectors in the system where all Syslog Daemon SmartConnector configurations are done.**

The **Syslog Pipe** SmartConnector is designed to work with an existing syslog daemon. This SmartConnector is especially useful when storage is a factor. In this case, syslogd is configured to write to a named pipe, and the Syslog Pipe SmartConnector reads from it to receive events.

The **Syslog File** SmartConnector is similar to the Pipe SmartConnector; however, this SmartConnector monitors events written to a syslog file (such as `messages.log`) rather than to a system pipe.

Configure the Syslog Pipe or File SmartConnector

This section provides information about how to set up your existing syslog infrastructure to send events to the ArcSight Syslog Pipe or File SmartConnector.

The standard UNIX implementation of a syslog daemon reads the configuration parameters from the `/etc/rsyslog.conf` file, which contains specific details about which events to write to files, write to pipes, or send to another host. First, create a pipe or a file; then modify the `/etc/rsyslog.conf` file to send events to it.

For syslog pipe:

- 1 Create a pipe by executing the following command:

```
mkfifo /var/tmp/syspipe
```

- 2 Add the following line to your `/etc/rsyslog.conf` file:

```
*.debug /var/tmp/syspipe
```

or

```
*.debug | /var/tmp/syspipe
```

depending on your operating system.

3 After you have modified the file, restart the syslog daemon either by executing the scripts **/etc/init.d/syslogd stop** and **/etc/init.d/syslogd start**, or by sending a `configuration restart` signal.

On RedHat Linux, you would execute:

```
service syslog restart
```

On Solaris, you would execute:

```
kill -HUP `cat /var/run/syslog.pid`
```

This command forces the syslog daemon to reload the configuration and start writing to the pipe you just created.

For syslog file:

Create a file or use the default for the file into which log messages are to be written.

After editing the `/etc/rsyslog.conf` file, be sure to restart the syslog daemon as described above.

When you follow the SmartConnector Installation Wizard, you will be prompted for the absolute path to the syslog file or pipe you created.

Install the SmartConnector

The following sections provide instructions for installing and configuring your selected SmartConnector.

Syslog Installation

Install this SmartConnector (on the syslog server or servers identified in the *Configuration* section) using the SmartConnector Installation Wizard appropriate for your operating system. The wizard will guide you through the installation process. When prompted, select one of the following **Syslog** connectors (see *Configure the Syslog SmartConnectors* in this guide for more information):

- Syslog Daemon
- Syslog Pipe
- Syslog File

Because all syslog SmartConnectors are sub-connectors of the main syslog SmartConnector, the name of the specific syslog SmartConnector you are installing is not required during installation.

The syslog daemon connector by default listens on port 514 (configurable) for UDP syslog events; you can configure the port number or use of the TCP protocol manually. The syslog pipe and syslog file connectors read events from a system pipe or file, respectively. Select the one that best fits your syslog infrastructure setup.

Prepare to Install Connector

Before you install any SmartConnectors, make sure that the ArcSight products with which the connectors will communicate have already been installed correctly (such as ArcSight ESM or ArcSight Logger).

For complete product information, read the *Administrator's Guide* as well as the *Installation and Configuration* guide for your ArcSight product before installing a new SmartConnector. If you are adding a connector to the ArcSight Management Center, see the *ArcSight Management Center Administrator's Guide* for instructions, and start the installation procedure at "Set Global Parameters (optional)" or "Select Connector and Add Parameter Information."

Before installing the SmartConnector, be sure the following are available:

- Local access to the machine where the SmartConnector is to be installed
- Administrator passwords

Install Core Software

Unless specified otherwise at the beginning of this guide, this SmartConnector can be installed on all ArcSight supported platforms; for the complete list, see the *SmartConnector Product and Platform Support* document, available from the OpenText SSO site.

- 1 Download the SmartConnector executable for your operating system from the OpenText SSO site.
- 2 Start the SmartConnector installation and configuration wizard by running the executable.



When installing a syslog daemon SmartConnector in a UNIX environment, run the executable as 'root' user.

Follow the wizard through the following folder selection tasks and installation of the core connector software:

- Introduction
- Choose Install Folder
- Choose Shortcut Folder
- Pre-Installation Summary
- Installing...

- 3 When the installation of SmartConnector core component software is finished, the following window is displayed:

Set Global Parameters (optional)

If you choose to perform any of the operations shown in the following table, do so before adding your connector. You can set the following parameters:

Parameter	Setting
FIPS mode	Select 'Enabled' to enable FIPS compliant mode. To enable FIPS Suite B Mode, see the SmartConnector User Guide under "Modifying Connector Parameters" for instructions. Initially, this value is set to 'Disabled'.
Remote Management	Select 'Enabled' to enable remote management from ArcSight Management Center. When queried by the remote management device, the values you specify here for enabling remote management and the port number will be used. Initially, this value is set to 'Disabled'.

Parameter	Setting
Remote Management Listener Port	The remote management device will listen to the port specified in this field. The default port number is 9001.
Preferred IP Version	When both IPv4 and IPv6 IP addresses are available for the local host (the machine on which the connector is installed), you can choose which version is preferred. Otherwise, you will see only one selection. The initial setting is IPv4.

The following parameters should be configured only if you are using OpenText SecureData solutions to provide encryption. See the *OpenText SecureData Architecture Guide* for more information.

Parameter	Setting
Format Preserving Encryption	Data leaving the connector machine to a specified destination can be encrypted by selecting 'Enabled' to encrypt the fields identified in 'Event Fields to Encrypt' before forwarding events. If encryption is enabled, it cannot be disabled. Changing any of the encryption parameters again will require a fresh installation of the connector.
Format Preserving Policy URL	Enter the URL where the OpenText SecureData Server is installed.
Proxy Server (https)	Enter the proxy host for https connection if any proxy is enabled for this machine.
Proxy Port	Enter the proxy port for https connection if any proxy is enabled for this machine.
Format Preserving Identity	The OpenText SecureData client software allows client applications to protect and access data based on key names. This key name is referred to as the identity. Enter the user identity configured for OpenText SecureData.
Format Preserving Secret	Enter the secret configured for OpenText SecureData to use for encryption.
Event Fields to Encrypt	Recommended fields for encryption are listed; delete any fields you do not want encrypted and add any string or numeric fields you want encrypted. Encrypting more fields can affect performance, with 20 fields being the maximum recommended. Also, because encryption changes the value, rules or categorization could also be affected. Once encryption is enabled, the list of event fields cannot be edited.

After making your selections, click **Next**. A summary screen is displayed. Review the summary of your selections and click **Next**. Click **Continue** to return to proceed with "Add a Connector" window. Continue the installation procedure with "Select Connector and Add Parameter Information."

Select Connector and Add Parameter Information

1 Select **Add a Connector** and click **Next**. If applicable, you can enable FIPS mode and enable remote management later in the wizard after SmartConnector configuration.

2 Select **Syslog daemon, pipe, or file** and click **Next**.

3 Enter the required SmartConnector parameters to configure the SmartConnector, then click **Next**.

Syslog Daemon Parameters	<i>Network port</i>	The SmartConnector for Syslog Daemon listens for syslog events from this port.
	<i>IP Address</i>	The SmartConnector for Syslog Daemon listens for syslog events only from this IP address (accept the default (ALL) to bind to all available IP addresses).
	<i>Protocol</i>	The SmartConnector for Syslog Daemon uses the selected protocol (UDP or Raw TCP) to receive incoming messages.
	<i>Forwarder</i>	Change this parameter to 'true' only if the events being processed are coming from another SmartConnector sending to a CEF Syslog destination, and that destination also has CEF forwarder mode enabled. That allows attributes of the original connector to be retained in the original agent fields.
Syslog Pipe Parameter	<i>Pipe Absolute Path Name</i>	Absolute path to the pipe, or accept the default: /var/tmp/syspipe
Syslog File Parameters	<i>File Absolute Path Name</i>	Enter the full path name for the file from which this connector will read events or accept the default: \var\adm\messages (Solaris) or \var\log\messages (Linux).
		A wildcard pattern can be used in the file name; however, in realtime mode, rotation can occur only if the file is over-written or removed from the folder. Realtime processing mode assumes following external rotation.
		For date format log rotation, the device writes to 'filename.timestamp.log' on a daily basis. At a specified time, the device creates a new daily log and begins to write to it. The connector detects the new log and terminates the reader thread to the previous log after processing is complete. The connector then creates a new reader thread to the new 'filename.timestamp.log' and begins processing that file. To enable this log rotation, use a date format in the file name as shown in the following example:
		filename'yyyy-MM-dd'.log;
		For index log rotation, the device writes to indexed files - 'filename.log.001', 'filename.log.002', 'filename.log.003', and so on. At startup, the connector processes the log with highest index. When the device creates a log with a greater index, the connector terminates the reader thread to the previous log after processing completes, creates a thread to the new log, and begins processing that log. To enable this log rotation, use an index format, as shown in the following example:
		filename'%d,1,99,true'.log;

		Specifying 'true' indicates that it is allowed for the index to be skipped; for example, if 5 appears before 4, processing proceeds with 5 and will not read 4, even if 4 appears later. Use of 'true' is optional.
	<i>Reading Events Real Time or Batch</i>	Specify whether file is to be read in batch or realtime mode. For batch mode, all files are read from the beginning. The 'Action Upon Reaching EOF' and 'File Extension if Rename Action' parameters apply for batch mode only.
	<i>Action Upon Reaching EOF</i>	For batch mode, specify 'None', 'Rename', or 'Delete' as the action to be performed to the file when the connector has finished reading and reaches end of file (EOF). For realtime mode, leave the default value of 'None' for this parameter.
	<i>File Extension If Rename Action</i>	For batch mode, specify the extension to be added to the file name if the action upon EOF is 'Rename' or accept the default value of '.processed'.

Select a Destination

- 1 The next window asks for the destination type; select a destination and click **Next**. For information about the destinations listed, see the *ArcSight SmartConnector User Guide*.
- 2 Enter values for the destination. For the ArcSight Manager destination, the values you enter for **User** and **Password** should be the same ArcSight user name and password you created during the ArcSight Manager installation. Click **Next**.
- 3 Enter a name for the SmartConnector and provide other information identifying the connector's use in your environment. Click **Next**. The connector starts the registration process.
- 4 If you have selected ArcSight Manager as the destination, the certificate import window for the ArcSight Manager is displayed. Select **Import the certificate to the connector from destination** and click **Next**. (If you select **Do not import the certificate to connector from destination**, the connector installation will end.) The certificate is imported and the **Add connector Summary** window is displayed.

Complete Installation and Configuration

- 1 Review the **Add Connector Summary** and click **Next**. If the summary is incorrect, click **Previous** to make changes.
- 2 The wizard now prompts you to choose whether you want to run the SmartConnector as a stand-alone process or as a service. If you choose to run the connector as a stand-alone process, select **Leave as a standalone application**, click **Next**, and continue with step 5.

3 If you chose to run the connector as a service, with **Install as a service** selected, click **Next**. The wizard prompts you to define service parameters. Enter values for **Service Internal Name** and **Service Display Name** and select **Yes** or **No** for **Start the service automatically**. The **Install Service Summary** window is displayed when you click **Next**.

4 Click **Next** on the summary window.

5 To complete the installation, choose **Exit** and Click **Next**.

For instructions about upgrading the connector or modifying parameters, see the *SmartConnector User Guide*.

Run the SmartConnector

SmartConnectors can be installed and run in stand-alone mode, on Windows platforms as a Windows service, or on UNIX platforms as a UNIX daemon, depending upon the platform supported. On Windows platforms, SmartConnectors also can be run using shortcuts and optional Start menu entries.

If the connector is installed in stand-alone mode, it must be started manually and is not automatically active when a host is restarted. If installed as a service or daemon, the connector runs automatically when the host is restarted. For information about connectors running as services or daemons, see the *ArcSight SmartConnector User Guide*.

To run all SmartConnectors installed in stand-alone mode on a particular host, open a command window, go to `$ARCSIGHT_HOME\current\bin` and run: `arcsight connectors`

To view the SmartConnector log, read the file `$ARCSIGHT_HOME\current\logs\agent.log`; to stop all SmartConnectors, enter Ctrl+C in the command window.

Device Event Mapping to ArcSight Fields

The following section lists the mappings of ArcSight data fields to the device's specific event definitions. See the *ArcSight Console User's Guide* for more information about the ArcSight data fields.

IIS Event Mappings

ArcSight ESM Field	Device-Specific Field
Agent (Connector) Severity	400..599 = High; 300..399 = Medium; 0, 100..299 = Low
Bytes In	sc-bytes
Bytes Out	cs-bytes
Destination Address	s-ip
Destination Host Name	s-computername
Destination Port	One of (s-port, cs-host)
Device Custom IPv6 Address 1	cs-host (Device IPv6 Address)
Device Custom IPv6 Address 2	c-ip (Source IPv6 Address)
Device Custom IPv6 Address 3	s-ip (Destination IPv6 Address)
Device Custom Number 1	s-siteid
Device Custom String 1	cs(Referer)
Device Custom String 2	time-taken
Device Custom String 3	sc-win32-status
Device Custom String 4	s-queueName
Device Custom String 6	Datagram SyslogAgent
Device Event Class ID	One of (cs-version, '(HTTP http.*)'), 'HTTP', one of (sc-status, '-', cs-method, sc-status), one of (cs-version, one of (cs-method, '(GET PUT HEAD TRACK TRACE POST SEARCH PROPFIND OPTIONS)'), sc-status, all of (cs-method, ':', sc-status)), (sc-status, '-', s-reason, all of (cs-version, ':', sc-status))))
Device Host Name	cs-host
Device Process Name	s-sitename
Device Product	'Internet Information Server'
Device Receipt Time	date, time

Configuration Guide for Microsoft IIS Syslog SmartConnector

Device Event Mapping to ArcSight Fields

ArcSight ESM Field	Device-Specific Field
Device Severity	sc-status
Device Vendor	'Microsoft'
Message	message
Name	'IIS action'
Protocol	cs-version
Reason	s-reason
Request Client Application	cs(User-Agent)
Request Cookies	cs(Cookie)
Request Method	cs-method
Request URL	cs-uri
Request URL File Name	cs-uri-stem
Request URL Query	cs-uri-query
Source Address	c-ip
Source Port	c-port
Source User Name	cs-username

please confirm that when customer used MySQL JDBC driver 5.1.38, they had issue to receive events. And the workaround is to apply older driver 5.0.8, after that connector is able to received events.

Send Documentation Feedback

If you have comments about this document, you can [contact the documentation team](#) by email. If an email client is configured on this computer, click the link above and an email window opens with the following information in the subject line:

Feedback on Configuration Guide for Microsoft IIS Syslog SmartConnector (SmartConnectors 8.4.3)

Just add your feedback to the email and click send.

If no email client is available, copy the information above to a new message in a web mail client, and send your feedback to MFI-Documentation-Feedback@opentext.com.

We appreciate your feedback!