

Content Manager

Software Version 25.2

EmailLink Installation and Configuration

opentext™

Document Release Date: July 2023
Software Release Date: April 2025

Legal notices

Copyright 2015-2025 Open Text

The only warranties for products and services of Open Text and its affiliates and licensors ("Open Text") are as may be set forth in the express warranty statements accompanying such products and services. Nothing herein should be construed as constituting an additional warranty. Open Text shall not be liable for technical or editorial errors or omissions contained herein. The information contained herein is subject to change without notice.

Adobe™ is a trademark of Adobe Systems Incorporated.

Microsoft® and Windows® are U.S. registered trademarks of Microsoft Corporation.

UNIX® is a registered trademark of The Open Group.

This product includes an interface of the 'zlib' general purpose compression library, which is Copyright © 1995-2002 Jean-loup Gailly and Mark Adler.

Documentation updates

The title page of this document contains the following identifying information:

- Software Version number, which indicates the software version.
- Document Release Date, which changes each time the document is updated.
- Software Release Date, which indicates the release date of this version of the software.

To check for updated documentation, visit <https://www.microfocus.com/support-and-services/documentation/>.

Support

Visit the [MySupport portal](#) to access contact information and details about the products, services, and support that OpenText offers.

This portal also provides customer self-solve capabilities. It gives you a fast and efficient way to access interactive technical support tools needed to manage your business. As a valued support customer, you can benefit by using the MySupport portal to:

- View information about all services that Support offers
- Submit and track service requests
- Contact customer support
- Search for knowledge documents of interest
- View software vulnerability alerts
- Enter into discussions with other software customers
- Download software patches
- Manage software licenses, downloads, and support contracts

Many areas of the portal require you to sign in. If you need an account, you can create one when prompted to sign in.

Contents

- Introduction 4
 - About Content Manager EmailLink 4
 - About this document 4
 - EmailLink prerequisites 4
- Installation and configuration 5
 - Creating the Domain User 5
 - Exchange Authentication 5
 - Gmail Authentication 6
 - Create the Credentials 6
 - Configure in EmailLink 6
 - Installing EmailLink 7
 - Installing EmailLink from a Command Line 11
 - Upgrading from ExchangeLink to EmailLink 11
 - Viewing Check In Style in EmailLink 11

Introduction

About Content Manager EmailLink

Content Manager EmailLink enables users to add email items to a mail folder, which checks them into a pre-defined Content Manager Container record.

This feature allows users to check in mail items quickly to frequently used Content Manager containers without the need to have the Content Manager client installed, or if it is installed, open on their computers.

Users can set up and manage multiple Check In Styles to manage their email items, as required.

CM_EmailLink_x64.msi installs two services on a server that enable this Content Manager functionality.

About this document

This document provides information for you to install and configure Content Manager EmailLink.

EmailLink prerequisites

For prerequisites, see **CM25.2_Spec.pdf** in the Content Manager installation folder.

NOTE: When you upgrade Content Manager from previous versions to 25.2, for the existing Check In Styles to be available in EmailLink, you need to update the **MailLinks** property query value in the EmailLink configuration file (**trimlink.hptrim.config**). The configuration file is available in the installation directory, for example, **C:\Program Files\Micro Focus\Content Manager\EmailLink**.

Open the configuration file in a text editor, locate the **MailLinks** property, and update the q value as follows:

```
q="type:MailForServerProcessing,SocialMediaForServerProcessing,  
ChannelDocsForServerProcessing,ChannelPostsForServerProcessing,  
TeamsChatForServerProcessing,DocsForServerProcessing"
```

Restart both EmailLink services after you update the EmailLink configuration file.

Installation and configuration

Creating the Domain User

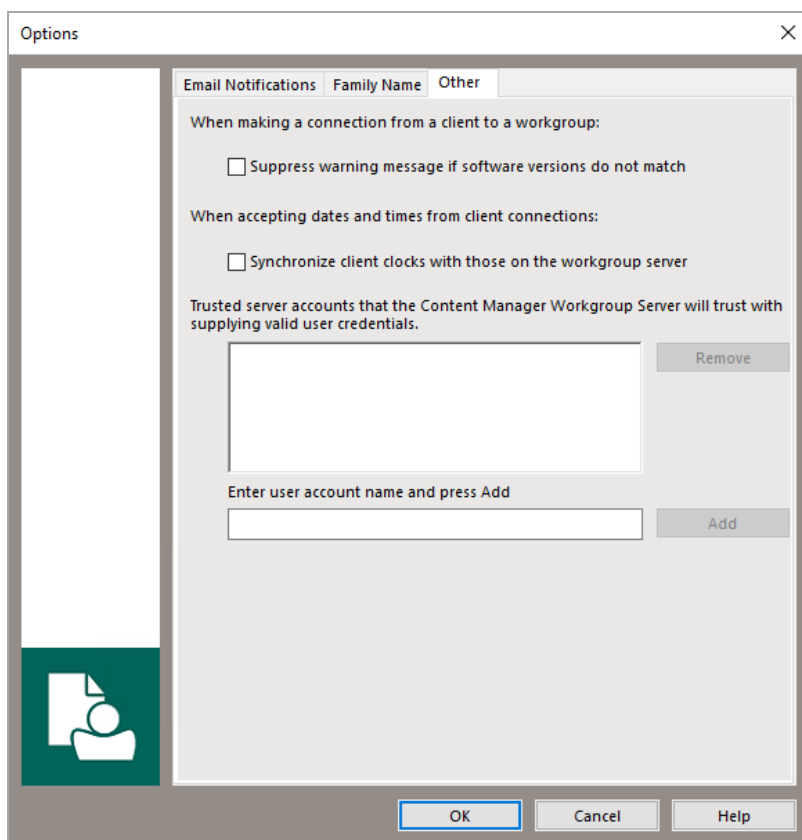
Exchange Authentication

Create a domain user account with the permission **Impersonate** in the Exchange Server.

You can set the user name and password in the **Exchange Credentials** section of the **Admin Console**. Then, if you are setting up EmailLink in the same domain as the Exchange Server, the account to run EmailLink will probably be the same one that also has permission to impersonate in the Exchange Server.

If you are not in the same domain as the Exchange Server, for example, when you are running EmailLink against an Office 365 Exchange Server, you can set the Exchange credentials manually.

If the user account with the permission **Impersonate** is not the account which is used to run the **Content Manager Workgroup Service** in your environment, then add the user to the trusted accounts list using **Content Manager Enterprise Studio** - on the **Home** tab, in the **General** group, click **Options**. On the displayed **Options** dialog, click **Other** and add the trusted accounts.



Gmail Authentication

Create the Credentials

Configuring authentication for Gmail requires the creation of a service account in your Google Apps domain. The steps required for this are documented in the [Google Apps Admin SDK](#). In short, the steps to follow are:

1. Create a Google Apps SDK project.
2. Enable the Gmail API for this project.
3. Create your service account.
4. Create the credentials for your service account.
5. Save the JSON or P12 file in a safe place.
6. Configure the Gmail scope for the service account in the [Google Admin console](#).

NOTE: When creating the credential key file select JSON or P12.

Configure in EmailLink

Once the credentials are created, in the Content Manager EmailLink Admin console, <http://localhost:1338/Preferences>, on the **Configuration** page, expand **Authentication** and select Gmail. Complete the details as follows:

1. Enter your mail domain (e.g. acme.com) in the Domain field.
2. Enter any text in the User Name, this field is not used for Gmail authentication.
3. Enter the service account email address (e.g. tutorial-service-account@tutorial-project-1348.iam.gserviceaccount.com) in the Service Account Email Address field.
4. Navigate and select the JSON or P12 key file.
5. Add the credentials and re-start the Content Manager EmailLink Sync Service.

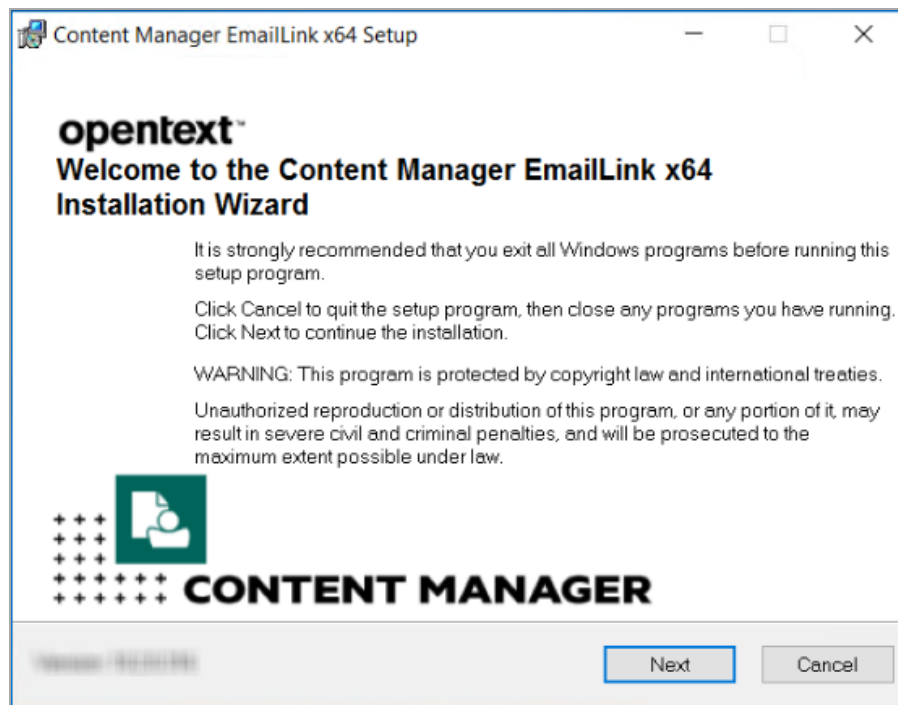
For additional details on setting up the EmailLink Authentication for Exchange and/or Gmail, see the EmailLink help that is accessible via the EmailLink Admin console, <http://localhost:1338/help/>.

Installing EmailLink

CAUTION: After running the **CM_EmailLink_x64.msi** (see below for details), ensure both Content Manager EmailLink Services are started.

1. With elevated user rights, from the installation media, run **CM_EmailLink_x64.msi** file

The **Welcome** dialog appears:



2. Click **Next**.

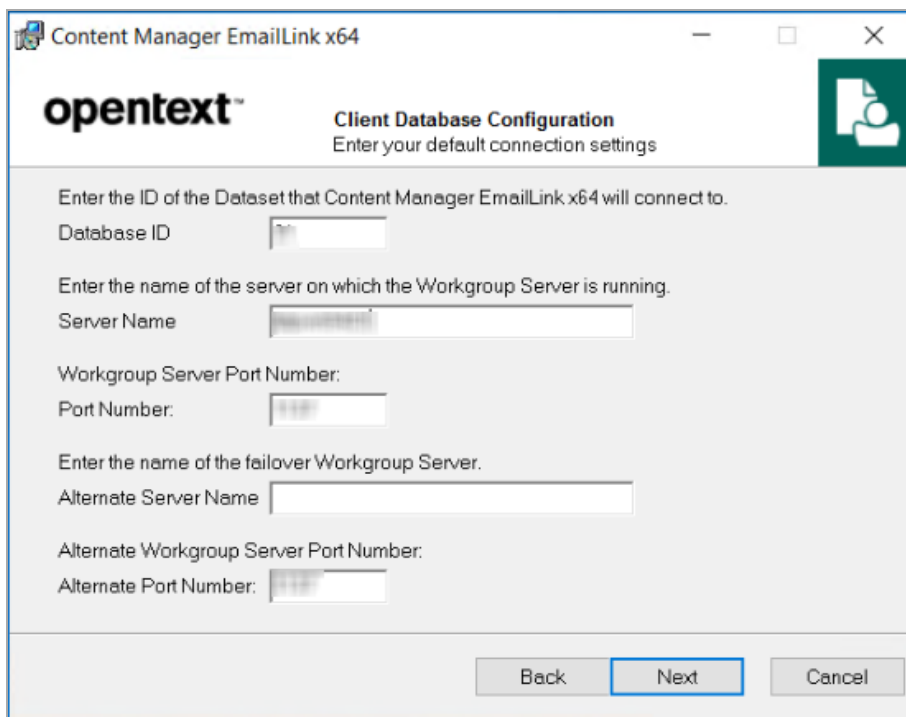
The **License Agreement** dialog appears:

3. Select **I accept the license agreement** and click **Next**.

The **Destination Folder** dialog appears:

4. Click **Next** to keep the default installation folder (recommended).

The **Client Database Configuration** dialog appears:

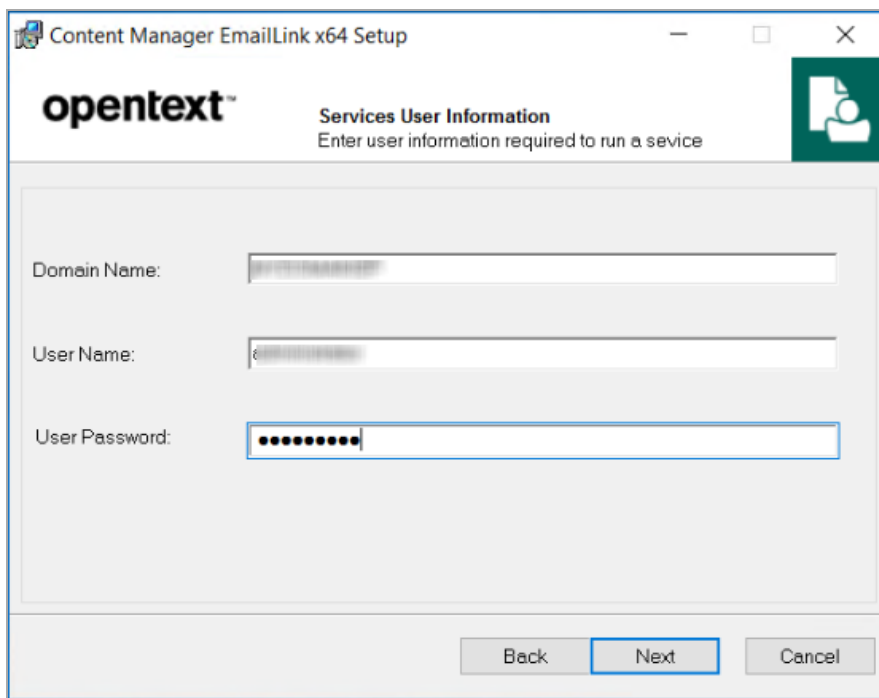


The screenshot shows a Windows-style dialog box titled "Content Manager EmailLink x64". Inside the dialog, the "opentext™" logo is on the left, and the title "Client Database Configuration" with the subtitle "Enter your default connection settings" is on the right. The main area contains several input fields with labels: "Database ID" (with a small icon), "Server Name", "Workgroup Server Port Number:" followed by "Port Number:", "Alternate Server Name", and "Alternate Workgroup Server Port Number:" followed by "Alternate Port Number:". At the bottom right, there are three buttons: "Back", "Next" (which is highlighted with a blue border), and "Cancel".

- **Database ID** – Content Manager dataset ID that EmailLink should link to the Exchange Server mail accounts.
- **Server Name** – the Content Manager Workgroup Server EmailLink should connect to.
- **Port Number** – the Workgroup Server port number to use. Default: **1137**.
- **Alternate Service Name** – the secondary Content Manager Workgroup Server EmailLink can connect to if required.
- **Alternate Port Number** – the secondary Content Manager Workgroup Server port number to use.

5. Click **Next**.

The **Services User Configuration** dialog appears:



The screenshot shows a Windows installation window titled "Content Manager EmailLink x64 Setup". The window has a standard Windows title bar with minimize, maximize, and close buttons. Below the title bar, the "opentext™" logo is on the left, and the text "Services User Information" and "Enter user information required to run a service" is on the right. A green icon of a person is in the top right corner. The main area contains three input fields: "Domain Name:" with a text box containing "EXAMPLE.COM", "User Name:" with a text box containing "ADMINISTRATOR", and "User Password:" with a text box containing ten dots. At the bottom right, there are three buttons: "Back", "Next" (which is highlighted with a blue border), and "Cancel".

- **Domain Name**
- **User Name** – the name of the user to run the services. See [Creating the domain user](#) above for more detail on the requirements for this user.

NOTE: This service user must be an administrator on the server where EmailLink is installed.

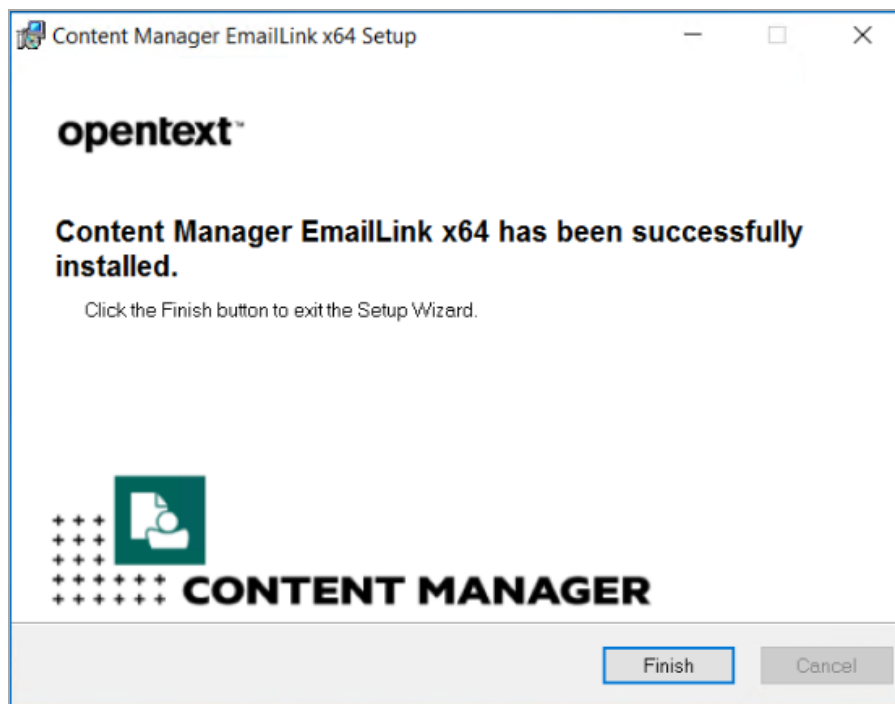
- **User Password**

6. Click **Next**.

The **Ready to Install the Application** dialog appears:

7. Click **Next**.

The confirmation dialog appears:



The installation of EmailLink is complete and has installed two services on the computer:

- **Content Manager EmailLink Admin Service**
- **Content Manager EmailLink Synch Service**

The installation has also created the folders:

- **C:\Micro Focus Content Manager\EmailLink**

NOTE: This folder is not created until after the Content Manager EmailLink Admin Service is started.

- **C:\Program Files\Micro Focus\Content Manager\EmailLink.**

8. Use the **EmailLink Preferences** console for further configuration by using your web browser to navigate to: <http://localhost:1338/Preferences>. The console has a help button to assist with configuration issues or questions you may have.
9. Use the Windows **Services** function to start the **Content Manager EmailLink Synch Service**.
10. Open the Content Manager client as an Content Manager administrator and on the **Administration** tab, in the **Options** group, click **System Options**. From the **Features** tab select the feature **Check In Styles** and click **OK**.
11. Restart the Content Manager clients, if they were running, to enable the new functionality. Content Manager users with an electronic address against their user profile and a matching email account on the Exchange and/or Gmail Servers can now create links to Content Manager containers using the record context menu **Send To – Add To Check In Styles**.

Installing EmailLink from a Command Line

1. Open a command prompt as administrator, for example, right-click it in the **Start** menu, and then click **Run as administrator**.
2. Edit the below sample command lines to suit your own needs.
3. Copy and paste the commands line to the Command prompt window and press Enter.

Sample Command Line for installing EmailLink

```
"C:\Users\username\Desktop\CM_EmailLink_x64.msi" /q /! *vx
"C:\Users\username\Desktop\Installlog.txt" EXL_WG="PrimaryWorkgroup" EXL_WG_
ALT="secondaryWorkgroup" EXL_ADMIN_PORT="AdminPortNo" EXL_DBID="DBID" EXL_
PORT="PortNo" EXL_PORT_ALT="AltPortNo" EXL_DOMAINNAME="DomainName" EXL_
SERVICEUSER="username" EXL_SERVICEPASS="Userpassword"
```

Upgrading from ExchangeLink to EmailLink

The ExchangeLink feature was introduced in HP Records Manager 8.1. In Content Manager, this feature was enhanced and renamed to EmailLink.

CAUTION: Before upgrading to Content Manager EmailLink, stop the **EmailLink Admin Service** and the **EmailLink Synch Service**.

To upgrade ExchangeLink to EmailLink, on the machine where ExchangeLink is installed, run **CM_EmailLink_x64.msi** as an administrator. Follow the installation steps described in [Installing EmailLink, on page 7](#)

Depending on the version of ExchangeLink that was previously installed, the root directory for ExchangeLink may be either C:\HP Records Manager or C:\HPE Records Manager. After upgrading, in that default location, there will now be a folder called **EmailLink**, as well as the ExchangeLink folder.

Once upgraded, navigate to the default root directory where both the ExchangeLink and EmailLink folders are, right-click on the **EmailLink** folder and click **Delete**. Once the folder has been deleted, right-click on the **ExchangeLink** folder and click **Rename** and rename this folder to **EmailLink**.

Viewing Check In Style in EmailLink

To view Check In Style in EmailLink after upgrading Content Manager to the latest version, you need to update **trimlink.hptrim.config** file. Perform the following:

1. Navigate to the installation folder, for example, C:\Program Files\Micro Focus\Content Manager\EmailLink and open the **trimlink.hptrim.config.template** and **trimlink.hptrim.config** files in a text editor.
2. Copy the following code snippet available in **trimlink.hptrim.config.template** file and paste it in **trimlink.hptrim.config** file.

```
<add name="Maillinks" model="FormSearch" trimType="CheckinPlace"
template="ExchangeUsers"
```

```
properties="CheckinPlaceName,CheckinPlaceOwner,CheckinPlaceCheckinAs,DateLastUp
dated,CheckinPlaceSyncState"
q="type:MailForServerProcessing,SocialMediaForServerProcessing,ChannelDocsForSe
rverProcessing,ChannelPostsForServerProcessing,TeamsChatForServerProcessing,Doc
sForServerProcessing" sortBy="cipOwner" pageSize="30"/>
```

3. Save the config files and close the text editor.
4. Restart both the EmailLink services.