
Relativity®

Designer Installation Guide

Version 4.2

LIANT

Retooling Enterprise Systems

Copyright © 1994-2002 by Liant Software Corporation. All rights reserved.
Printed in U.S.A.

No part of this publication may be reproduced, stored in a retrieval system or transmitted, in any form or by any means, electronic, mechanical, photocopied, recorded, or otherwise, without prior written permission of Liant Software Corporation.

The software described in this document is furnished under license and may be copied (with inclusion of the copyright notice) only in accordance with the terms of such license.

The information in this document is subject to change without prior notice. Liant Software Corporation assumes no responsibility for any errors that may appear in this document.

Companies, names, and data used in examples herein are fictitious.

Relativity, RM/COBOL, and RM/InfoExpress are registered trademarks of Liant Software Corporation.

Micro Focus is a registered trademark of Micro Focus International Limited.

Microsoft, Windows, Windows 98, Windows Me, Windows NT, Windows 2000, and Windows XP are registered trademarks of Microsoft Corporation in the United States and/or other countries.

UNIX is a registered trademark in the United States and other countries, licensed exclusively through X/Open Company Ltd.

Simba is a registered trademark of Simba Technologies.

Other companies mentioned herein own various trademarks.

Liant Software Corporation

8911 N. Capital of Texas Highway
Austin, TX 78759
U.S.A.

Phone (512) 343-1010
(800) 762-6265

Fax (512) 343-9487

Web Site <http://www.liant.com>

503134 Relativity Designer Installation Guide
Version 4.2
First release August 2002

Contents

Preface	1
Introducing the Relativity Designer	1
Related Relativity Documentation.....	2
Conventions Used in this Document	3
Registration	4
Technical Support	4
Support Guidelines.....	5
Test Cases	5
Installation	7
System Requirements	7
Installing the Relativity Designer	8
Removing the Relativity Designer.....	9
Verification.....	11
Prerequisites	11
Starting the Relativity Designer	12
Opening a Data Source.....	13
Displaying the Table Form.....	15
Viewing COBOL Data	16
Using Online Help.....	17
Closing the Data Source	18
Exiting the Relativity Designer	18

Preface

Introducing the Relativity Designer

The Relativity Designer is an interactive, Windows-based development tool that enables the COBOL application developer to create a relational database view of data stored in existing COBOL files. The Relativity Designer is used in all configurations of Relativity: the single-tier Relativity Data Manager that resides on a 32-bit Windows-based system, and the two-tier Relativity Client/Server that provides access to COBOL data that resides on a server system.

The Relativity Designer provides the following functions:

- Automatically extracts the definitions of data files from the COBOL source programs.
- Collects information regarding the data from the application developer pertaining to the correct interpretation of the data file structure.
- Allows the developer to define and maintain a relational database system of “tables” using the COBOL data. All this information is stored in a catalog.

This manual, which is part of the Relativity document set listed on page 2, describes how to install the Relativity Designer software component and verify that the installation was successful. The Relativity Designer installation instructions are the same, regardless of whether a non-client/server configuration (referenced throughout this documentation as “single-tier”) or client/server configuration of Relativity is being installed. However, the Relativity Designer verification instructions do differ depending on whether a single-tier or client/server configuration of Relativity is being installed.

In addition, your Relativity package contains the document, *The Theory of Relativity, A Primer*, which defines specific terminology and provides a comprehensive overview of the Relativity software tools and their functions. Before you install this Relativity product, be sure to read this book.

Related Relativity Documentation

In addition to the *Relativity Designer Installation Guide* and *The Theory of Relativity, A Primer*, the complete Relativity documentation set consists of the following items:

- **Relativity Client/Server Installation Guide.** A document (one for UNIX and one for Windows NT) that is intended for a System Administrator. It describes the following:
 - How to install the Relativity Data Server software component on a computer running either a UNIX or Windows NT operating system and verify that the installation was successful.
 - How to:
 - Install the Relativity Data Client software component on a secure Windows workstation (such as the workstation belonging to a Database Administrator) for the purpose of catalog development.
 - Install the Relativity Server Administrator utility program in order to define a server for the client and configure a server data source.
 - Verify communications between the client and the server.
 - How to install the Relativity Data Client software component on an end user's Windows workstation and verify that the installation was successful by configuring a client data source and associating it with a server data source.
- **Relativity Data Manager Installation Guide.** A document that describes how to install and verify the Relativity Data Manager software component on a Windows-based workstation.
- **Relativity DBA Installation Guide.** A document that describes how to install and verify the Relativity DBA (Database Administrator) software component on a Windows-based workstation.
- **Relativity Java Client User's Guide.** An HTML document, located on the Relativity product CD, that describes the installation and verification of the Relativity Java Client as well as information about deploying it with Java applications and applets, and setting up data source connections. The Java Client is a Java Database Connectivity (JDBC) component that resides in a Java runtime environment (JRE).

- **Relativity Online Help Documentation.** An online help documentation system that provides fast access to detailed information on Relativity features and options. The help system also contains step-by-step presentations on how to accomplish specific tasks with Relativity and an extensive glossary. A separate help file is provided for each of the various Relativity tools: the DBMS, the Designer, the DBA, and the Server Administrator. See page 17.
- **Relativity README Files.** A set of online HTML documents that list any changes to the Relativity documentation since its publication and contain new technical information that supplements the documentation.

Conventions Used in this Document

This document contains visual cues to help the reader identify important information.

Text Convention	Indicates
Initial Capitals	Menu names, command names, dialog box and form titles.
Bold	Menu names, command and button names. Other elements to be selected or typed to accomplish an action. Label on input media used during installation.
<i>Italic</i>	Reference to a topic in the current document or another Relativity document. Reference to another document.
<i>Bold Italic</i>	Variables.

Registration

Please take a moment to fill out and mail (or fax) the registration card you received with Relativity. You can also complete this process by registering your Liant product online at: <http://www.liant.com>.

Registering your product entitles you to the following benefits:

- **Customer support.** Free 30-day telephone support, including direct access to support personnel and 24-hour message service.
- **Special upgrades.** Free media updates and upgrades within 60 days of purchase.
- **Product information.** Notification of upgrades or revisions to Relativity when they are released.

You can also receive up-to-date information about Liant and all its products via our Web site. Check back often for updated content.

Technical Support

Liant Software Corporation is dedicated to helping you achieve the highest possible performance from the Liant family of products. The technical support staff is committed to providing you prompt and professional service when you have problems or questions about your Liant products.

Technical support services are subject to Liant's prices, terms, and conditions in place at the time the service is requested.

While it is not possible to maintain and support specific releases of all software indefinitely, we offer priority support for the most current release of each product. For customers who elect not to upgrade to the most current release of the products, support is provided on a limited basis, as time and resources allow.

Support Guidelines

When you need assistance, you can expedite your call by having the following information available for the technical support representative:

- Company name and contact information.
- Liant product serial number (found on the media label, registration card, or product banner message).
- Liant product version number.
- Operating system and version number.
- Hardware, related equipment, and terminal type.
- Exact message appearing on screen.
- Concise explanation of the problem and process involved when the problem occurred.

Test Cases

You may be asked for an example (test case) of the source that demonstrates the problem.

- The smaller the test case is, the faster we will be able to isolate the cause of the problem.
- Do not send full applications.
- Reduce the test case to the smallest possible combination of components required to reproduce the problem.
- If you have very large data files, write a small program to read in your current data files and to create new data files with as few records as necessary to reproduce the problem.
- Test the test case before sending it to us to ensure that you have included all the necessary components to run the test case.

When submitting your test case, please include a README text file that explains the problems. This file must include information regarding the hardware, operating system, versions of all relevant software (including the operating system and all Liant products).

Installation

This chapter describes how to install the Relativity Designer software program on a Microsoft Windows operating system. The installation procedure is the same regardless of whether a client/server or single-tier configuration of Relativity is being installed.

System Requirements

Installation of the Relativity Designer on a Windows-based workstation for application development requires the following minimum software and hardware.

Component	Requirement
<i>Computer</i>	Pentium-class processor or higher.
<i>Operating System</i>	Microsoft Windows 98 or Windows 98 Second Edition (SE), Windows Millennium Edition (Me), Windows NT 4.0 or later (Service Pack 6 or higher recommended), Windows 2000, or Windows XP.
<i>Memory</i>	64 MB is recommended.
<i>Disk Space</i>	A hard drive with at least 26 MB of free disk space.
<i>Installation Media</i>	One CD-ROM drive and one 3.5" diskette drive.
<i>Monitor</i>	800x600 resolution is required. Higher resolution is recommended.
<i>Internet Browser</i>	A browser (for example, Netscape or Internet Explorer) capable of viewing HTML files, such as the README text or other documents that are available in this format.

Installing the Relativity Designer

Note If you have a version of Relativity that supports the uninstall process, you should remove it prior to installing a newer version. (See “Removing the Relativity Designer” on page 9.)

To install the Relativity Designer software:

1. Start Windows.

CAUTION Close all other applications before proceeding with the installation.

2. Insert the product CD-ROM in the appropriate CD-ROM drive.
3. Do one of the following:

- If the installation program starts automatically, proceed to Step 4.
- If the installation program does not start automatically, click **Start**, and then click **Run**. In the Run dialog box, in Open, type

`d:autorun`

where *d* is the drive letter of the CD-ROM. Click **OK**.

4. If the installation starts automatically or if you start it using the **autorun** command, click **Designer Installation** to display the following list of options:
 - Click the **View the README file** option to review important last-minute information about Relativity.
 - Click the **View the Installation Documentation** option to read or install the documentation for this product that is provided on the CD-ROM.
 - Click the **Install the Relativity Designer** option to begin the actual installation process.
5. Follow the instructions presented on the installation dialog boxes.
6. When the Software License Agreement dialog box opens, you must click **Yes** in order to continue with the installation.

7. When the Liant License File dialog box opens, insert the license diskette that came as part of the installation media into drive A. Continue to follow the instructions presented on your screen.

Note1 If you are using a drive other than A, be sure to correct the location of the license file in the Liant License File dialog box.

Note2 If necessary, the LIANT.LIC file can be copied to a location on a hard drive and that location can be specified during installation.
8. When the Choose Destination Location dialog box opens, note that the Destination Folder box indicates the location on your hard drive where Relativity will be installed.
9. When the Setup Type dialog box opens, select one of the following options:
 - a. **Typical.** This option installs all Relativity components: the Relativity Designer and Samples.
 - b. **Compact.** This option installs only the Relativity Designer.
 - c. **Custom.** This option installs the Relativity Designer and allows you to choose whether you want to install the other Relativity component, Samples.
10. When the Select Program Folder dialog box opens, specify the program folder name that will appear on the Windows Start menu.
11. When the Setup Complete dialog box opens, select the check box to register your product online or click **Finish** to close the dialog box.

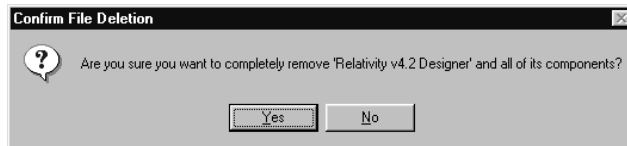
Removing the Relativity Designer

The Relativity Designer can be removed from the Windows workstation on which it was installed. This may be necessary if the Relativity Designer is to be moved to a different machine or if a new release of the Relativity Designer is to be installed on the same machine.

Removing an existing version of the Relativity Designer prior to installing a new one ensures accurate use counts on shared files and enables all files to be properly renamed during a later uninstall process.

To remove the Relativity Designer:

1. Click the **Start** button, point to **Settings**, and then click **Control Panel**.
2. Double-click **Add/Remove Programs**.
3. Click the **Install/Uninstall** tab on the Add/Remove Programs Properties dialog box.
4. In the list box, select “Relativity vX.Y Designer” where X.Y indicates the version number.
5. Click the **Add/Remove** button to proceed with the uninstall.
6. Click **Yes** in the Confirm File Deletion message box to proceed with the uninstall.



7. The Remove Programs From Your Computer dialog box is displayed, detailing the progress of the uninstall. When the uninstall is successfully completed, click **OK**.
8. Click **OK** to close Add/Remove Programs Properties dialog box.
9. Close the Windows Control Panel.

Verification

This chapter describes how to verify the installation of the Relativity Designer software on a Windows-based workstation. The verification takes place with a catalog that was installed during the installation of the Relativity Data Manager or Relativity Data Server, and a data source named Verify that was created during the verification of the installation of the Relativity Data Manager or Relativity Data Server and Data Client products.

In addition, the Relativity Designer software includes three sample databases called Shirt-1, Shirt-2, and Shirt-3. These three databases contain COBOL data files, COBOL source programs, and COBOL schema (or RST) files. The Shirt-3 sample also contains a Relativity database catalog for the COBOL data files. The Shirt-3 database has its ownership assigned to the **DB3 Owner** group with a password of **1234**. The sample files are provided for both RM/COBOL and Micro Focus COBOL and are used in conjunction with Liant Relativity training. However, they may also be used as a convenient database to experiment with the Relativity Designer.

Prerequisites

This verification process assumes the following:

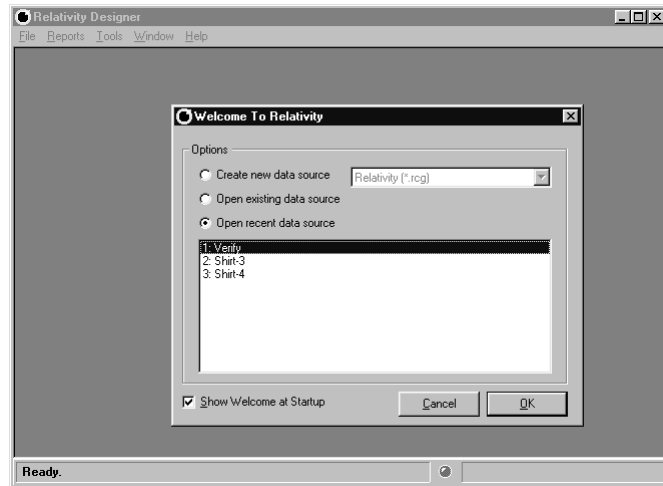
- If you are using the client/server version of Relativity, that you have followed the instructions in the *Relativity Client/Server Installation Guide* (for either UNIX or Windows, as appropriate) to install a Relativity Data Server, set up a server data source named Verify, install a Relativity Data Client on the same machine as the Relativity Designer, and set up a client data source that is also named Verify and associate it with the server data source, Verify.
- If you are using the single-tier version of Relativity, that you have installed a Relativity Data Manager on the same machine as the Relativity Designer and followed the instructions in the *Relativity Data Manager Installation Guide* for setting up a data source named Verify.

Starting the Relativity Designer

To start the Relativity Designer in Windows:

1. Click **Start**, point to **Programs**, point to **Relativity**, and then click **Designer**.

The Welcome to Relativity (Designer) window is displayed and you are ready to open the Verify data source.



Note The Welcome to Relativity (Designer) window appears when you first install and start the Relativity Designer. From this window, you can set up and create a new data source, or open an existing or most recently used Relativity data source. After completing the first session with Relativity, the most recently used data source is always selected by default in this window when you start Relativity again. To disable the Welcome window after the initial installation, clear the Show Welcome at Startup check box. Subsequently, when you start another Relativity session, you will begin all operations in the main Relativity Designer window. You may, however, enable this capability again by choosing Welcome from the Tools menu.

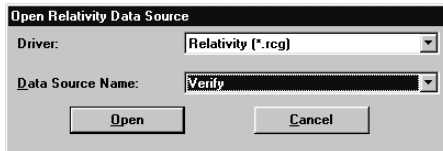
2. If you wish, click **Cancel** to dismiss the Welcome to Relativity window.

Opening a Data Source

To open the Verify data source:

1. In the main Relativity Designer window, on the File menu, click **Open Data Source**.

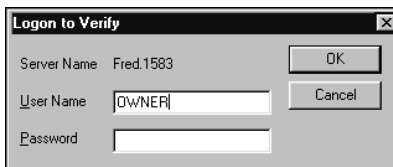
The Open Relativity Data Source dialog box opens.



Alternatively, if the Welcome to Relativity window remains displayed, click the **Open existing data source** option, select the Verify data source from the list, and click **OK**. Proceed to Step 3.

2. In the **Data Source Name** box, select **Verify**. If necessary, click the Down Arrow to display a list of data source names.
3. Click **Open**.

On some versions of Relativity, the Logon to Data Source dialog box opens to collect information needed in order to authenticate your access to the server.



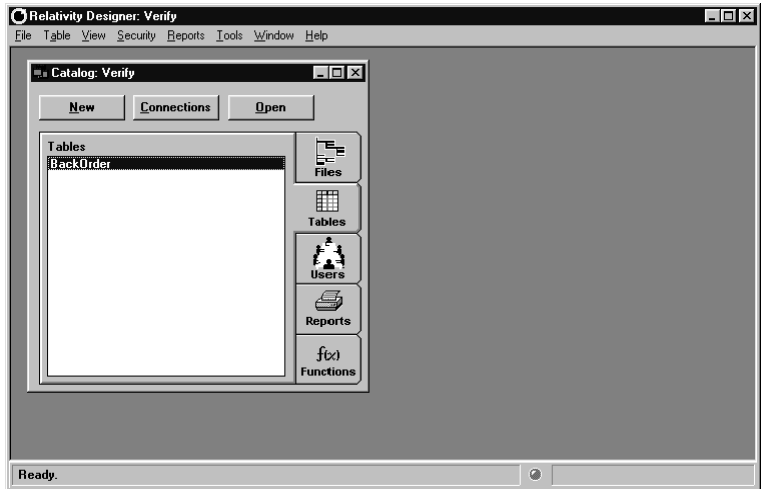
4. In the Logon to Data Source dialog box, type a user name in the appropriate box and click **OK**. (Because security has not been set up to access the Verify data source, any user name will suffice and no password is required.)

The Catalog window for the selected data source, Verify, is displayed in the main Relativity Designer window.



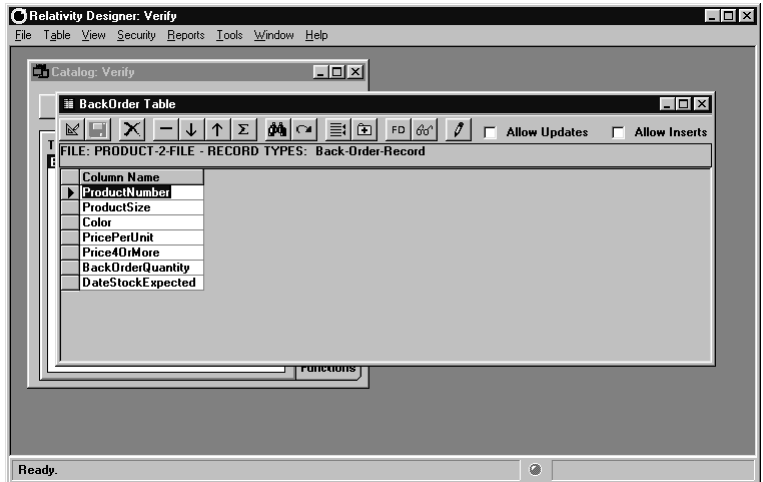
Displaying the Table Form

1. On the Catalog window, click the **Tables** tab.




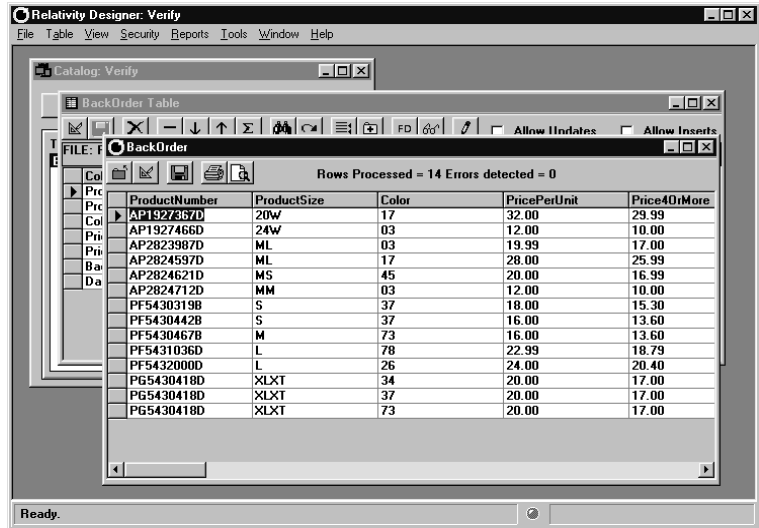
2. Double-click the table name **BackOrder**.


The Table form for the BackOrder table opens.



Viewing COBOL Data

1. Click the **Show** button  on the Table form toolbar. The contents of the data items in the Table form are displayed in the Show Table Contents form.



2. Click the **Close** button  to exit the Show Table Contents form.

Using Online Help

The Relativity Designer Help file is the fundamental online reference for the Relativity Designer . It is designed to help you learn and use the product.

You can access the Relativity Designer Help file in several ways:


- In the Relativity Designer main window, from the Help menu, click **Contents** to display a list of Help topics. You can use the tabs in the Help Topics dialog box to search for information:
 - To browse through topics grouped by subject: Click the Contents tab. From here, you can go directly to more specific information and a list of all the Help topics by double-clicking any closed book icon. Then select the topic of interest from the expanded list and click the Display button. (Alternately, you can double-click the topic.) The Help window for that topic appears.
 - To see a list of alphabetized index entries (or keywords): Click the Index tab. The online index is arranged just like a book index. Click the Index tab to find specific topics listed alphabetically. Type an entry or the first few letters of the word you want to search for, or scroll through the list. Then select the topic and click the Display button.
 - To search for words or phrases that may be contained in a Help topic: Click the Find tab. Follow the instructions on your screen to complete this task.
- In the Relativity Designer main window, from the Help menu, click **Search for Help On** to display the Index tab of the Help Topics dialog box. Here you can search for topics that contain a specific term or phrase.
- While you are working in Relativity, you also can press **F1** to access the Help topic for the specific task at hand or currently selected item in the window or dialog box. (This is called context-sensitive Help.)
- If available, click a Help button in a dialog box. A Help topic window is displayed.

From the Help menu, you can also access additional online Help files:

- Click **DBMS Help File** for information on using the Relativity Data Manager.
- Click **Server Admin Help File** for information on using the Relativity Server Administrator.

Closing the Data Source


To close a data source, do one of the following:

- On the File menu, click **Close Data Source**. Shortcut: Ctrl+D.
- In the Catalog window, click **Close**  in the upper-right corner of the title bar.

When you close a data source, the Relativity Designer window remains open, allowing you to reopen the data source, open another data source, or exit the Relativity Designer.

Exiting the Relativity Designer

To exit the Relativity Designer, do one of the following:

- On the File menu, click **Exit**. Shortcut: Ctrl+F4.
- In the Relativity Designer window, click **Close**  in the upper-right corner of the title bar.