



StarTeam 16.1

Layout Designer Help

Micro Focus
The Lawn
22-30 Old Bath Road
Newbury, Berkshire RG14 1QN
UK
<http://www.microfocus.com>

Copyright © Micro Focus 2017. All rights reserved.

MICRO FOCUS, the Micro Focus logo and StarTeam are trademarks or registered trademarks of Micro Focus IP Development Limited or its subsidiaries or affiliated companies in the United States, United Kingdom and other countries.

All other marks are the property of their respective owners.

2017-08-02

Contents

Introduction	5
Contacting Support	5
Customizing your Client with Alternate Property Editors	6
Form Design	6
StarFlow Extensions Project	6
Layout Designer UI	7
Creating and Opening a Form	8
Saving New Forms	9
Controls	9
Available Property Types	10
Property Control Attributes	11
Non-Property Control Attributes	14
Complex Control Attributes	15
Drawing Complex Controls	16
Drawing Non-Property Controls	17
Drawing Property Controls	17
Changing the Tab Order for Controls	19
Editing Form Properties	20
Changing Default Link Colors in Workflow Files	20
Working with Tabs	20
Preparing a Form for the StarTeam Cross-Platform Client	21
Layout Designer XML Tags	22
approvalTasks	22
attachments	22
browseFileButton	23
browseFolderButton	24
checkbox	24
controlGroup	25
dateTime	26
droplist	26
edit	27
eolSettings	27
form	28
itemHistory	28
itemLabels	29
itemLinks	29
itemReferences	30
Label	31
listbox	31
pathSettings	32
property	32
propertyDialog	33
propertyList	33
propertyPage	34
propertySheet	34
radio	35
radioset	35
runCommandButton	36
static	37
taskDependencies	38
toBeReviewed	38

userList39
workRecords 39

Introduction

You can use Layout Designer with the Cross-Platform Client to create and maintain property dialogs that respect the built-in StarTeam workflow.

While the default properties are suitable for many installations, you can customize the product to fit the needs of your organization. Available customization options include adding or removing values from existing properties and adding new properties and values to an item. The added properties and values enable you to track information of interest to your organization.



Note: Using Layout Designer with the Cross-Platform Client does not allow you to create custom workflows to manage items (such as change requests and requirements). To create custom workflows, use StarTeam Extensions.

Layout Designer provides the ability to customize forms within the application. Custom forms can be used to show custom properties, hide default properties that are not of interest to your organization, or rearrange the interface to more closely meet the requirements of your organization.

Contacting Support

Micro Focus is committed to providing world-class services in the areas of consulting and technical support. Qualified technical support engineers are prepared to handle your support needs on a case-by-case basis or in an ongoing partnership. Micro Focus provides worldwide support, delivering timely, reliable service to ensure every customer's business success.

For more information about support services, visit the Micro Focus SupportLine web site at <http://supportline.microfocus.com> where registered users can find product upgrades as well as previous versions of a product. Additionally, users can find the Knowledge Base, Product Documentation, Community Forums, and support resources.

When contacting support, be prepared to provide complete information about your environment, the product version, and a detailed description of the problem, including steps to reproduce the problem.

For support on third-party tools or documentation, contact the vendor of the tool.

Customizing your Client with Alternate Property Editors

This section contains topics related to using Alternate Property Editors (APEs).

Form Design

Using the Layout Designer, you can create custom forms for all component types and deploy those forms in the Cross-Platform Client or the Web Client. You can quickly and easily add and arrange both default and custom item properties to the form. The Layout Designer supports multi-tabbed forms and standard user interface control components such as radio buttons, check boxes, list boxes, and command buttons.

The following suggestions will aid you in creating useful and usable custom forms:

- Plan your form so that it can be filled out from left to right and top to bottom. Keep users moving forward; do not place a check box at the bottom of the form that requires a change at the top.
- Create clear, concise, instructive labels for the fields and make each label unique. Duplicate labels cause confusion.
- Use access keys, where available, to provide keyboard access to fields. Try to make access keys mnemonic, and be sure each access key on a tab is unique.
- To produce a neat, orderly form, align all of the fields and labels of the form on an invisible grid.
- Create logical groupings for fields that go together. Spacing fields close together makes them appear to be associated; spacing fields farther apart produces the opposite effect.

Before creating custom forms with Layout Designer, verify that the StarFlow Extensions project exists on the server on which the form will be developed and used. Perform the following tasks to design a form:

1. Plan the form.
2. Create the appropriate folder in the StarFlow Extensions project.
3. Launch the Layout Designer and design the form in the form layout area.
4. Save the form in the appropriate project folder in the StarTeam Extensions project.
5. Activate the form.

StarFlow Extensions Project

By default, when you install StarTeam Server, the installer automatically installs and creates the StarFlow Extensions project. The StarFlow Extensions project contains a folder named `Projects`. You must use this project to store your custom Layout Designer forms.

Forms stored within the `Projects` folder are used by projects on the server as follows:

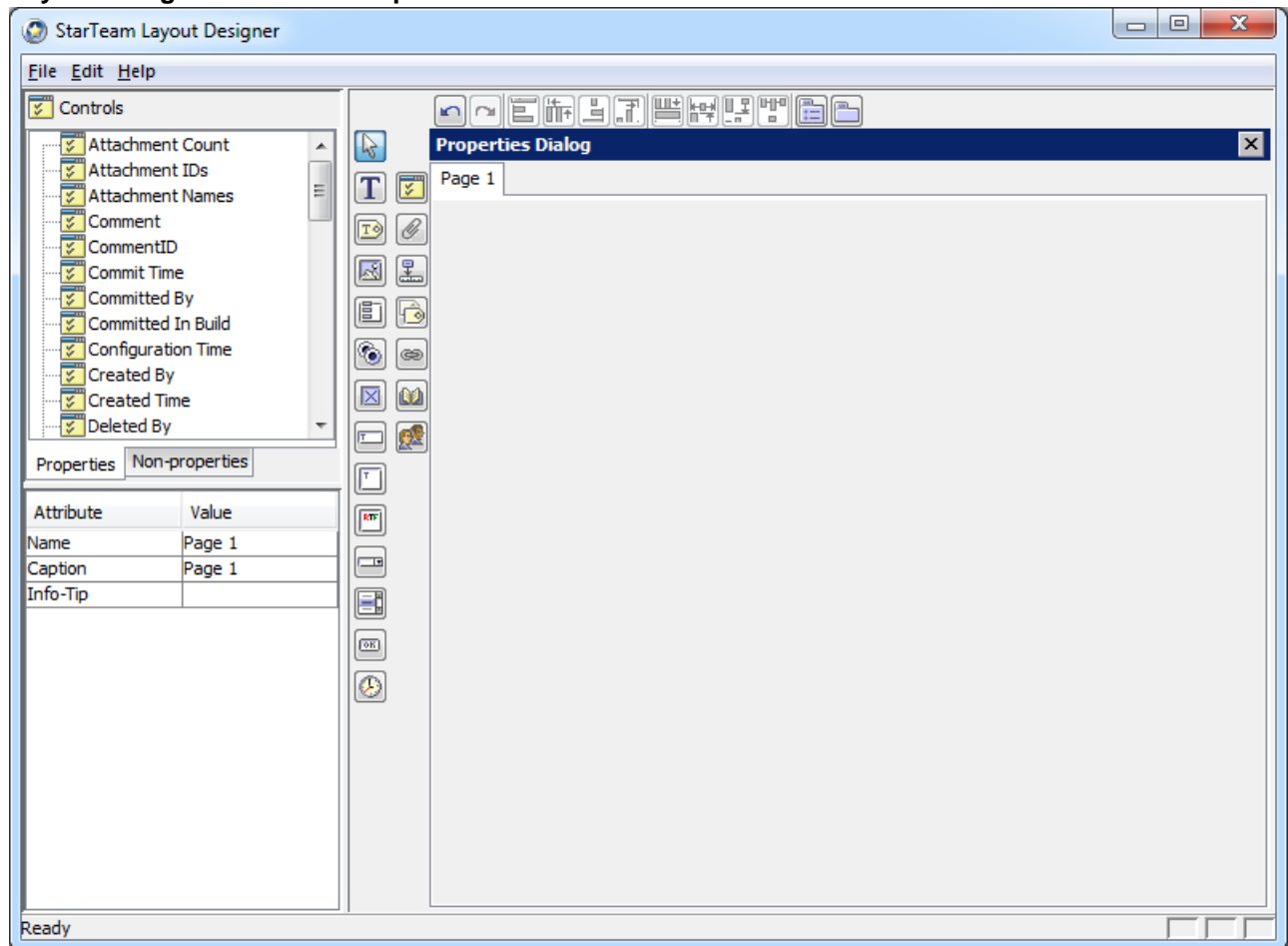
- If you store a custom form in the `Projects` folder, it is used by all projects on the server unless a form at a lower level overrides it.
- If you create a *myproject* folder under the `Projects` folder, all forms stored within this folder are used for the project named *myproject* on the server that contains the StarFlow Extensions project.
- If you create a *myviews* folder under the *myproject* folder, the forms stored within it are used in the *myviews* view for the specified project.

You must use specific filenames for layout files. File names are case-sensitive. If a file is named incorrectly, the client cannot find or use the file. Layout Designer outputs *.Layout.xml files. The following filenames are supported for each item type:

File	File.Layout.xml
Change Request	ChangeRequest.Layout.xml
Requirement	Requirement.Layout.xml
Task	Task.Layout.xml
Topic	Topic.Layout.xml

Layout Designer UI


Layout Designer Window Components



The **Layout Designer** main window provides a menu and three panes. The menu provides options for creating and saving forms, editing, and alignment.

The **Controls** pane in the upper left lists all available control types. As controls are added to the form, the names of those controls are displayed under the appropriate control type. Controls are divided into three groups: simple property controls, simple non-property controls, and complex controls. When a control is selected in the **Form Layout Area**, the **Property** pane in the lower left displays the properties for the selected object as a set of attribute/value pairs. The **Tools Palette**, to the left of the **Form Layout Area**, provides tool buttons for drawing each of the available controls. You can also drag/drop controls to the **Form Layout Area** from the **Properties** tab of the **Controls** pane.

When you are drawing controls in the **Form Layout Area**, all of the control tool buttons in the **Tools Palette** turn the mouse pointer into a cross-hair, enabling you to draw an object of the selected type on the

form. After you draw the control, the pointer arrow is restored and the new control is automatically selected. If you click on a control tool button in the **Tools Palette** and then change your mind, you can use the **Pointer** tool  button to restore the pointer arrow, enabling you to select, resize, and move objects already created on the form.

Understanding the Form Layout Area

The **Form Layout Area** provides the space on which you will design your forms, a toolbar, and two tool palettes.

- The **Form Layout Area** is the space in which you will draw your form.
- The **Editing Toolbar** at the top of this pane provides quick access to various editing functions.
- The **Simple Control Tool Palette** in the **Controls Pane** enables you to draw controls such as text labels, check boxes, and radio sets in the Form Layout Area.
- The **Tools Palette** enables you to draw complex controls in the **Form Layout Area**. Complex controls are groups of simple controls that work together, such as a user list control complete with **Add** and **Remove** buttons.

This **Form Layout Area** displays an approximation of the way the form will be rendered at runtime. Ultimately, the rendering engine for the platform on which the form is run will determine its runtime appearance. While it is important to size, align, and arrange the controls as you want them to appear at runtime, it is equally important to set the alignment and positioning properties for the controls correctly. Although many of the alignment property values do not influence the position of an element in the **Form Layout Area**, these values are used by the rendering engine of the target platform to position the element at runtime. By default, the layout area presents a dialog with a single tab that is labeled **Page 1**.

Creating and Opening a Form

By default, the Layout Designer is installed in the StarTeam group of the Windows Start Menu. You can start Layout Designer by selecting **Start > Programs > Micro Focus > StarTeam Layout Designer > StarTeam Layout Designer**. Layout Designer initially opens an empty main window with the **File** and **Help** menus available. After you perform one of the procedures below, Layout Designer displays the area in which to design your form, and the tools used to create controls.

Before you can use the features of Layout Designer, you must do one of the following:

- Create a new form
- Open an existing form
- Import a previously-exported form

To create a new form

1. Select **File > New** from the main menu. The **New Template** dialog box opens.
2. Select the server on which the form is to reside, login if necessary, and click **New**. The **Select a Layout Type** dialog box opens.
3. Select a layout type from the drop-down list, and click **OK**.

To open an existing form

1. Select **File > Open** from the main menu. The **Open Template** dialog box opens.
2. Select the server on which the form resides, and login if necessary.
3. Browse to the file, select it, and click **Open**. Layout Designer opens files with the *.layout.xml extension.

To import a previously-exported form

1. Select **File > Import** from the main menu. The **Import Template** dialog box opens.
2. Browse to the file, select it, and click **Open**.



Tip: If you have been working on a form and you are not ready to save it to the server, use the **File > Export** command from the main menu to save a copy to the destination of your choice. When you are ready to begin working on the file again, import it into Layout Designer using the main menu **File > Import** command.

Saving New Forms

1. Select **File > Save As** from the main menu.
2. Browse to the appropriate folder within the StarTeam Extensions project.
3. Click **Save**.



Note: In step 2, if you are no longer connected to the server, you will need to log onto it again before browsing to a folder.

Controls

Controls are objects such as list boxes, check boxes, radio buttons, and labels. Controls are placed on forms to display information and enable the user to select values and enter information into the system. In Layout Designer, controls are divided into three groups:

- Simple property controls
- Simple non-property controls
- Complex controls

Simple Property Controls

Simple property controls are specific controls that are directly linked to the properties for an item, such as Type and Severity for Change Request items. A property control displays an item property on a form. Property controls are simple controls that are directly linked to a property for a item, display the current value for the property, and optionally enable the user to select a new value for the property. A property may appear more than once within a form, as long as each instance appears on a separate tab. A property may appear at most once on any single tab within the form.

Each item property has a default representation; for example, all enumerations default to combo box controls. The Layout Designer enables you to quickly and easily add the property to the form in its default representation or to select a different representation.

For example, for a change request item, the **Type** property is an enumeration with two values: *Defect* and *Suggestion*. Because it is an enumeration, it defaults to a combo box control. However, because it is a short list of mutually exclusive options, it could easily be represented as a radio set. In fact, because there are only two possible values (the change request either is a suggestion or it is not a suggestion), it could even be represented as a check box.

Simple Non-Property Controls

Non-property controls are stand-alone controls that are not linked to item properties. Non-property controls include label, group, image, and static text controls. They can be used to add labels, help text, and images (such as a company logo) to a form.

Complex Controls

Complex controls are made up of any number of simple controls and, in general, contain the same components as the corresponding interface in StarTeam. Complex controls include controls like the User List with its accompanying Add and Remove buttons. Complex controls enable you to easily incorporate entire sections of the user interface into your form. Complex controls are meant to be the only control on a

tab. If you add one or more simple controls to a tab that contains a complex control, the simple controls will be placed on a separate tab at runtime.

The bounding box for the complex control represents the entire area to be taken up by all components within the control. It is the responsibility for the client application to determine the layout of specific components within the control. Specific components within the control may be assigned tab index values, access key assignments, and tool tip text. This is part of the inherent implementation of the control and cannot be customized.

The following are complex controls:

- Custom Property List Control
- Attachments Control
- Item History Control
- Item Labels Control
- Item Links Control
- Item References Control
- User List Control

Control Attributes for all Controls

All of the controls have the following attributes.

- Name** A unique name for the control. By default, unique names are generated by the system, formed by appending a two-digit, sequential number to the property or control name.
- X-Position** The position of the top left corner of the control, specified as a number of dialog units*, along the X, or horizontal, axis of the form.
- Y-Position** The position of the top left corner of the control, specified as a number of dialog units*, along the Y, or vertical, axis of the form.
- Width** The horizontal measurement of the control specified as a number of dialog units*.
- Height** The vertical measurement of the control specified as a number of dialog units*.
- Auto move** (optional) Specifies whether or not the control can reposition itself as the dialog is resized (none, horizontal, vertical, or both). The default is none.
- Auto size** (optional) Specifies whether or not the control can resize itself as the dialog is resized (none, horizontal, vertical, or both). The default is none.



Note: * Dialog units are platform independent measurement units that are converted to pixels at runtime using the target platform's rendering engine, factoring in the size of the display font.

Additionally, all **property** controls have the following attributes.

- Property** The name of the item property that the control will expose on the form.
- Tab index** (optional) The order in which the control gains focus as the user moves the insertion point through the form using the Tab key.
- Info tip** (optional) Text that appears in a tip pop-up when the mouse pointer hovers over the control. If no text is entered, no pop-up tip help is displayed.

Available Property Types

The default control for a property is based on the property type. The Layout Designer supports the following property types:

Boolean	Follows the same control conventions as enumerations.
Enumerations	The default representation is a combo box control. A list control can be substituted without special considerations. Enumerations can also be represented as check boxes and radio sets where appropriate. Multi-select enumerations are available and should be represented as lists.
Integers (INT32), Real (FLOAT64)	The default representation is a static text control. Text edit, list box, combo box, check box, and radio set controls may also be used where appropriate.
Rich Content	Default representation is rich content control.
Text	The default representation is a text field control, which can be changed to a text area control by setting the multiline property to <code>yes</code> . Static text, list, combo, check box, and radio set controls may also be used where appropriate.
Date/Time	The default representation is a date/time control. Static text, text field, list, and combo box controls may also be used where appropriate without special considerations. Check box and radio set controls may also be used as long as the value attribute is one of the following: An ISO 8601-format date/time string (for example, "1994-11-05T13:15:30Z") The special value <code>now</code> , which is interpreted to mean the date/time when the dialog was initialized with the current item
UserID, ViewID, ObjectID	The default representation is a combo box control. A list control can be substituted without special considerations. Static text is also supported. Check box and radio set controls may also be used with these property types.
IDArray	In some cases, IDArray properties (such as <code><userList></code> and <code><attachments></code>) are more completely supported as complex controls. Where complex controls are not provided, the only possible representation is as static text.

Property Control Attributes

Below are descriptions of the property controls found in the Tools Palette and the attribute values that you can edit for these controls.

- Static Text Controls
- Radio Set Controls
- Check Box Controls
- Text Field Controls

Static Text Control

The static text control is unique in that it can be either a property or non-property control. As a property control, it displays the value of a property without allowing the user to make changes. As a non-property control, it can be used to display a line of text on the form.

Attributes:

Caption	Leave blank for property controls. Use a Label control for descriptive text.
Text Align	(optional) Determines the alignment of displayed text (left or right).

Radioset Control

Use the radio set control to display a small number of mutually exclusive choices.

Attributes:

Text Align	(optional) The alignment of all radio buttons and text within the radio set. Left specifies that text is left aligned and the button is drawn to the left of the text. Right specifies that text is right aligned and the button is drawn to the right of the text. The default is left.
Rows	(optional) The number of button rows in the radio set.
Columns	(optional) The number of button columns in the radio set.
Horizontal Align	(optional) The horizontal alignment of radio buttons within the group (left or right).
Vertical Align	(optional) The vertical alignment of radio buttons within the group (top, middle, or bottom).
Border	(optional) The border style for the control's bounding box (solid, etched, or none). The default is solid.
Caption	Descriptive text for the control.
Label Position	The location of caption text.

Check Box Control

Use the Check Box control as a toggle or yes/no control.

Attributes:

Checked State	The value of the property when the check box is in the checked state.
Unchecked State	The value of the property when the check box is in the unchecked state.
Caption	(optional) Descriptive text for the control.
Text Align	(optional) The position and alignment of caption text. If text-align is left, then the text is left aligned and the check box is drawn to the left of the text. If text-align is right, then the text is right aligned and the check box is drawn to the right of the text. By default, left alignment is assumed.
Tab Index	(optional) The relative position of the control as the user moves from one control to another using the Tab key.
Access Key	(optional) A single character to be used in conjunction with the Alt key to bring focus to the field. The character must exist within the caption text; it will appear underlined in the caption. Additionally, each access key on a tab must be unique.

Text Field Control

The Text Field control provides a single-line text input area. Use this control for short comments and for data that the user must enter in the system. The Text Field control is just an empty box into which the user can input text; there is no caption, label, or other descriptive text built into this control. You must, therefore, create an associated Label control to label the contents of the field and to provide a target for an access key.

Attributes:

Multiline	(optional) Whether the control is allowed to span more than one line (yes for text field controls).
Text Align	(optional) The alignment of text within the control (left or right).

Tab Index (optional) The relative position of the control as the user moves from one control to another using the Tab key.

Text Area Control

The Text Area control provides a multiline text input area, useful for large blocks of text. The Text Area control is just an empty box into which the user can input text; there is no caption, label, or other descriptive text built into this control. You must, therefore, create an associated Label control to label the contents of the field and to provide a target for an access key.

Attributes:

Multiline (optional) Whether the control is allowed to span more than one line (yes for text area controls).

Text Align (optional) The alignment of text within the control (left or right).

Tab Index (optional) The relative position of the control as the user moves from one control to another using the Tab key.

Combo Box Control

The Combo Box control provides a list control with a single-line footprint. The Combo Box control is just an empty box in which a list is displayed; there is no caption, label, or other descriptive text built into this control. You must, therefore, create an associated Label control to label the contents of the field and to provide a target for an access key.

Attributes:

Height Extended The vertical measurement of the extended list in platform-independent dialog units. The default is 100.

Sort (optional) Whether to sort the list alphabetically (yes or no). The default is no.

Tab Index (optional) The relative position of the control as the user moves from one control to another using the Tab key.

List Control

The List control displays a multiline list of values. The List control is just an empty box in which a list is displayed; there is no caption, label, or other descriptive text built into this control. You must, therefore, create an associated Label control to label the contents of the field and to provide a target for an access key.

Attributes:

Sort (optional) Whether to sort the list alphabetically (yes or no). The default is no.

Tab Index (optional) The relative position of the control as the user moves from one control to another using the Tab key.

Time Control

The Time control displays time/date-related properties.

You can edit the following value:

Tab Index (optional) The relative position of the control as the user moves from one control to another using the Tab key.

Browse Button Control

The Browse Button control provides the option to browse files (inserting the resultant full path and filename into an associated text control), browse folders (inserting the resultant full path into an associated text control), or run a command. Before you create a browse button, you must first create a text field in which to store the resultant path. Associating the text field and the browse button with the same property instructs the system to enter the browse button results into that field. Before you create a run command button, the command must already exist and its full path and executable name must be associated with a property (such as the Test Command property).

Attributes:

- Caption** (optional) Descriptive text for the control. By default, browse buttons display ellipsis and run command buttons display Run as caption text.
- Tab Index** (optional) The relative position of the control as the user moves from one control to another using the Tab key.
- Access Key** (optional) A single character to be used in conjunction with the **Alt** key to bring focus to the button. The character must exist within the caption text; it will appear underlined in the caption. Additionally, each access key on a tab must be unique.

Non-Property Control Attributes

This topic describes simple property controls found in the Tools Palette and the attribute values that you can edit for these controls.

- Label Controls
- Image Controls
- Group Controls
- Static Text Controls

Label Control

The Label control provides a textual label for another control; it cannot be created before the control with which it is to be associated. Label controls serve as descriptions for Text Field, Text Area, Combo Box, and List controls; these controls do not have built-in captions, labels, or other descriptive text.

Because an access key requires a textual label, the access key property is assigned to the Label control rather than the controls with no built-in caption text. Info Tips may be assigned to both the label and the property control.

Attributes:

- Control List** The control with which this label is associated.
- Caption** (optional) The text displayed in the control.
- Access Key** (optional) A single character to be used in conjunction with the **Alt** key to bring focus to the field. The character must exist within the caption text; it will appear underlined in the caption when rendered. Additionally, each access key on a tab must be unique.
- Info Tip** (optional) Text that will appear in a tip pop-up when the mouse pointer hovers over the control. If no text is entered, no pop-up tip help is displayed.

Image Control

The Image control enables you to embed an image, such as a logo, onto the form. The Layout Designer supports .gif and .jpg formats.

Attributes:

Image Available under normal circumstances; Unavailable if image data is missing or corrupted.

Content Type The format of the image (.gif or .jpg).

Group Control

If your first section includes multiple subtopics, introduce what the reader will encounter in the text.

Attributes:

Horizontal Align (optional) The default horizontal alignment of child controls within the group (left or right).

Vertical Align (optional) The default vertical alignment of child controls within the group (top, middle, or bottom.)

Border (optional) The border style for the control (Solid, Etched, or None). The default is none.

Caption Descriptive text for the control.

Label Position The position of caption text (above or below). The default is above.

Text Align The alignment of caption text (left or right).

Static Text Control

The static text control is unique in that it can be either a property or non-property control. As a property control, it displays the value of a property without allowing the user to make changes. As a non-property control, it can be used to display a line of text on the form.

Attributes:

Caption Leave blank for property controls. Use a Label control for descriptive text.

Text Align (optional) Determines the alignment of displayed text (left or right).

Complex Control Attributes

This topic lists the complex property controls found in the Tools Palette and their attribute values.

Available Complex Controls

The complex controls are:

- Custom Property List Control
- Attachments Control
- Item History Control
- Item Labels Control
- Item Links Control
- Item References Control
- User List Control

Complex Control Attributes

All complex controls have the following attributes:

Name A unique name for the control. By default, unique names are generated by the system, formed by appending a two-digit, sequential number to the property or control name.

- X-Position** The position of the top left corner of the control, specified as a number of dialog units*, along the X, or horizontal, axis of the form.
- Y-Position** The position of the top left corner of the control, specified as a number of dialog units*, along the Y, or vertical, axis of the form.
- Width** The horizontal measurement of the control specified as a number of dialog units*.
- Height** The vertical measurement of the control specified as a number of dialog units*.
- Auto Move** (optional) Specifies whether or not the control can reposition itself as the dialog is resized (none, horizontal, vertical, or both). The default is none.
- Auto Size** (optional) Specifies whether or not the control can resize itself as the dialog is resized (none, horizontal, vertical, or both). The default is none.
- Property** The name of the item property that the control will expose on the form.
- Tab index** (optional) The order in which the control gains focus as the user moves the insertion point through the form using the Tab key.
- Info tip** (optional) Text that appears in a tip pop-up when the mouse pointer hovers over the control. If no text is entered, no pop-up tip help is displayed.



Note: * Dialog units are platform independent measurement units that are converted to pixels at runtime using the target platform's rendering engine, factoring in the size of the display font.

Drawing Complex Controls

Complex controls enable you to easily incorporate entire sections of the user interface into your form. Complex controls are meant to be the only control on a tab. If you add one or more simple controls to a tab that contains a complex control, the simple controls will be placed on a separate tab at runtime.

You can create the following complex property controls from the Tools Palette:

- Custom Property List Control
- Attachments Control
- Item History Control
- Item Labels Control
- Item Links Control
- Item References Control
- User List Control

To create complex property controls (general)

1. Click the desired complex property button on the Tools Palette. The mouse pointer changes to a cross-hair.
2. Click and drag to draw the control on the form in the Form Layout Area. The **Create New Control** dialog box opens.
3. Type a unique property name for the control, and click **OK**.



Note: The buttons on the Tools Palette represent the simple control properties that you can add to the form. The buttons are not applicable to every item type. For example, you cannot add a *User List Control* to a Change Request dialog.

Drawing Non-Property Controls

Non-property controls are stand-alone controls that are not linked to item properties. Non-property controls include label, group, image, and static text controls.

You can create the following non-property controls from the Tools Palette:

- Create non-property controls (general)
- Create Label non-property controls
- Create Image non-property controls
- Create Group non-property controls
- Create Static Text non-property controls

To create a non-property control (general)

1. Click the appropriate button on the Tools Palette. The mouse pointer changes to a cross-hair.
2. Click and drag to draw the control on the form. A dialog box opens so you can name the control.
3. Type a unique ID of your choosing for the control, and click **OK**.

To create a Label control

1. Click the Label Control button on the Tools Palette, then click the Form Layout Area, and drag to draw the control on the form. The **Create New Control dialog** box opens.
2. Select the property control to be associated with the label, and click **OK**.
3. Change the **Caption value** to descriptive text for the control, replacing the **Label:** default value.

To create an Image control


1. Click the Image Control button on the Tools Palette, then click the Form Layout Area, and drag to draw the control on the form. The **Create New Control dialog** box opens.
2. Type an **ID** for the field that is unique within the form, and click **OK**. The **Import Image** dialog box opens.
3. Browse to the .gif or .jpg file of your choice, and click **Import**.

To create a Group control

1. Click the Group control button on the Tools Palette, then click the Form Layout Area, and drag to draw the control on the form. The **Create New Control dialog** box opens.
2. Type an **ID** for the field that is unique within the form, and click **OK**. The **Import Image** dialog box opens.
3. Browse to the .gif or .jpg file of your choice, and click **Import**.

To create a Static Text non-property control

1. Click the Static Text Control button on the Tools Palette, then click the Form Layout Area, and drag to draw the control on the form. The **Create New Control dialog** box opens.
2. Select the **Display Caption Only** check box, and click **OK**.
3. Type the display text in the **Caption** value area in the Property Pane.

 **Note:** The Static Text control is unique in that it can be either a property or non-property control. As a property control, it displays the value of a property without allowing the user to make changes. As a non-property control, it can be used to display a line of text on the form.

Drawing Property Controls

A property control displays a item property on a form. Property controls are simple controls that are directly linked to a property for a item, display the current value for the property, and optionally enable the user to select a new value for the property. A property may appear more than once within a form, as long as each instance appears on a separate tab. A property may appear at most once on any single tab within the form.

You can create the following property controls from the Tools Palette:

- Create default property controls
- Create customized property controls
- Create Static Text property controls
- Create Radio Set property controls
- Create Check Box property controls
- Create Text Field, Text Area, Combo Box, or List property controls
- Create Time property controls
- Create Browse Button property controls
- Create run command Browse Button property controls

To create default property controls

1. Click the **Properties** tab in the **Controls** pane. The **Properties** tab displays a list of all available properties for the item type.
2. Select the property that you want to display on the form, then drag your selection onto the form and drop it in an appropriate location. The default control for that property displays on the form.

To create customized property controls

1. Click the appropriate button on the Tools Palette. The mouse pointer changes to a cross-hair.
2. Click and drag to draw the control on the form. A dialog box opens so you can select the item property to associate with the control.
3. Select the property to be exposed by the control, enter any control-specific information, and click **OK**.



Note: The buttons on the Tools Palette represent the simple control properties that you can add to the form.

See the sub-procedures that follow about the available property controls for specific information on each control.

To create Static Text property controls

1. Click the Static Text Control button on the Tools palette, then click the Form Layout Area, and drag to draw the control on the form. The **Create New Control** dialog box opens.
2. Select the property to be exposed by the control, and leave the **Display caption only** check box unchecked.
3. Click **OK**.

To create Radio Set property controls

1. Click the Radio Set Control button on the Tools Palette, then click the Form Layout Area, and drag to draw the control on the form. The **Create New Control** dialog box opens.
2. Select the property to be exposed by the control, and click **OK**. The **Add Radio Controls** dialog box opens.
3. You must create at least two radio controls for a radio set control. To create the radio controls within the radio set:
 - a. Type the caption text for the button.
 - b. Select the value to which the property will be set when the control is selected.
 - c. Click **Next** to create another control and repeat.
 - d. Click **Finish** when you have created the necessary controls.



Note: After you have created a radio set and have associated display text with the radio controls, you cannot edit either the display text or the associated values using the Layout Designer. Instead, you must delete the control and create a new one.

To create Check Box property controls

1. Click the Check Box Control button on the Tools Palette, then click the Form Layout Area, and drag to draw the control on the form. The **Create New Control** dialog box opens.
2. Select the property to be exposed by the control, and click **OK**. The **Select State Values** dialog box opens.
3. Select the values to be associated with the check box in its checked and unchecked states, and click **OK**.



Note: After you have created a check box and have associated a property value to its checked and unchecked states, you cannot edit the associated values using Layout Designer. Instead, you must delete the control and create a new one.

To create Text Field, Text Area, Combo Box, or List property controls

1. Click one of the following buttons on the Tools Palette:
 - Text Field Control
 - Text Area Control
 - Combo Box Control
 - List Control
2. Click the Form Layout Area, and drag to draw the control on the form. The **Create New Control** dialog box opens.
3. Select the property to be exposed by the control, and click **OK**.



Tip: Create an associated Label control to describe the field and provide an access key target. You can create a Label control using the Label Control button on the Tools Palette.

To create Time property controls

1. Click the Time Control button on the **Tools Palette**, then click on the **Form Layout Area**, and drag to draw the control on the form. The **Create New Control** dialog box opens.
2. Select the property to be exposed by the control, and click **OK**.

To create Browse Button property controls

1. Create a text field control and select the property it is to expose. This is the same property (file path or folder path) that is to be attached to the browse button.
2. Click the Browse button on the Tools Palette, then click in the Form Layout Area, and drag to draw the control on the form. The **Create New Control** dialog box opens.
3. Select the button type (either **Browse File Button** or **Browse Folder Button**) and the property that displayed by the text control created in step 1, and click **OK**.

To create run command Browse Button property controls


1. Create the executable, if necessary, and associate it with a StarTeam item property.
2. Click the Browse button on the Tools Palette, then click in the Form Layout Area, and drag to draw the control on the form. The **Create New Control** dialog box opens.
3. Select **Run Command Button** as the control type and the property that contains the command name as its value, and click **OK**.

Changing the Tab Order for Controls

The tab order determines the order in which the insertion point will move through the controls when the user presses the Tab key. By default, the tab order for controls is the order in which you add the controls to the form.

To change the order of tab controls

1. On the Editing Toolbar at the top of the Layout Designer window, click the Tab Order button to turn on **Tab Order** view. This button works as a toggle. The tab order for each control displays superimposed on each control in the Form Layout Area.

2. **Ctrl + click** the tab order box for the control to be first in the tab order. Initially, the number 1 displays in the superimposed box on the control.
3. Click each control in sequence to apply the next sequential number.
 **Tip:** Instead of performing steps 2 and 3, you can also click the tab order box in the Form Control Area for a control. Clicking repeatedly cycles through the numbers and adjusts the numbers of all the other controls on the form.
4. Click the **Tab Order** button to turn off Tab Order view.

Editing Form Properties

Form properties are available in the Property pane found in the lower left of the Layout Designer window.

To edit form properties

1. Select a component in the Form Layout Area.
2. Use the Property pane to edit the **Name**, **Caption**, or **Info Tip** values.

Changing Default Link Colors in Workflow Files

Links are color-coded, one color for links with no conditions and another color for links with conditions. By default, Workflow Designer displays unconditional links in dark blue and conditional links in cyan. Conditional links are dotted lines. You can easily change the default colors. You cannot change the default line style.

To change the default link color

1. Choose **Edit Link Options Default Link Colors** from the menu. A color selection dialog opens.
2. Select the new default link color by selecting a color swatch or entering RGB or HSB values, then click **OK**.

To change the default conditional link color

1. Choose **Edit Link Options Default Conditional Link Colors** from the menu. A color selection dialog opens.
2. Choose the new default link color by selecting a color swatch or entering RGB or HSB values, then click **OK**.

Working with Tabs

By default, Layout Designer creates a form with a single tab labeled *Page 1*. You can change tab text, add tabs to the form, and change the order of tabs using the **Edit Property Sheet** dialog box.

You can manage tabs using the Edit Tabs toolbar button in the Editing Toolbar at the top of the Layout Designer window. You can do the following:

- Add tabs
- Remove tabs
- Reorder tabs
- Add or change the caption value for a tab



Note: Multiple controls of the same property on a single tab are not supported — that is, only the first control will be used. Also, certain controls (<propertyList>/<property>, <attachments>, and

<userList>) must be the only control on a tab. All attributes for these controls are currently ignored except property for <userList>.

To add a tab

1. Click the Edit Tabs toolbar button in the Editing Toolbar. The **Edit Property Sheet** dialog box opens.
2. Type caption text for the tab in the **Title** field.
3. Click **Add**. A new tab displays in the dialog with the caption you provided in step 2.
4. To add more tabs, do not close the dialog, and repeat steps 2 and 3.
5. When you are finished adding tabs, click **OK**.



Tip: If you create more tabs than fit in the sample area, the arrow buttons on the right of the **Edit Property Sheet** dialog box become active, enabling you to move to the first, previous, next, and last tab in the sequence.

To remove a tab

1. Click the Edit Tabs toolbar button in the Editing Toolbar. The **Edit Property Sheet** dialog box opens.
2. Click on the tab in the sample area of the dialog box and explicitly select the tab that you wish to remove. When you select a tab, its name displays in the **Title** field.
3. Click **Remove**.
4. When you are finished removing tabs, click **OK**.

To reorder tabs

1. Click the Edit Tabs toolbar button in the Editing Toolbar. The **Edit Property Sheet** dialog box opens.
2. Click on the tab in the sample area of the dialog box and explicitly select the tab that you wish to reorder. When you select a tab, its name displays in the **Title** field.
3. Click the arrow buttons to the left of the sample area to reposition the tab left or right in the sequence.
4. When you are finished reordering tabs, click **OK**.

To rename a caption on a tab

1. Click the Edit Tabs toolbar button in the Editing Toolbar. The **Edit Property Sheet** dialog box opens.
2. Click on the tab in the sample area of the dialog box and explicitly select the tab that you wish to rename. When you select a tab, its name displays in the **Title** field.
3. Edit the **Title** field, and click **OK** to apply the changes.

Preparing a Form for the StarTeam Cross-Platform Client

Refer to the StarTeam Cross-Platform Client online help or PDF to see how to prepare a form.

Layout Designer XML Tags

This section provides detailed information about the individual elements in the Layout Designer XML schema. Elements are listed alphabetically.

approvalTasks

`<approvalTasks>` represents a custom control used to display a list of approval tasks in the **Approval tab** of the **File Properties** dialog box.

The bounding box information for this custom control represents the entire area allocated for the various control components required. The client application is responsible for laying out individual components within the bounding box as it sees fit.

Any associated `<label>` or `<controlGroup>` is not included and must be specified separately. Individual controls within this custom control may have their own tab order, access keys, and tool tips. This is currently part of the inherent implementation of the control and cannot be customized.

Attributes

The attributes for this element are described below:

- name** Unique ID for this control.
- top** Top-most Y coordinate.
- left** Left-most X coordinate.
- width** Width of the control.
- height** Height of the control.
- tabindex** (optional) The tab order of this control in the dialog page.
- tooltip** (optional) A static text string to be displayed as the tool tip mouse over help for this control. If no tooltip is specified, then no mouse over help is displayed.

Children

None.

attachments

`<attachments>` represents a custom control used to display attachments and edit them, when appropriate. This control must be the only control on a tab.

The bounding box information for this custom control represents the entire area allocated for the various control components required. The client application is responsible for laying out individual components within the bounding box as it sees fit. The associated `<label>` is not included and must be specified separately.

Individual controls within this custom control may have their own tab order, access keys, and tool tips. This is currently part of the inherent implementation of the control and cannot be customized.

Attributes

The attributes for this element are described below:

name	Unique ID for this control.
top	Top-most Y coordinate.
left	Left-most X coordinate.
width	Width of the control.
height	Height of the control.
tabindex	(optional) The tab order of this control in the dialog page.
tooltip	(optional) A static text string to be displayed as the tool tip mouse over help for this control. If no tooltip is specified, then no mouse over help is displayed.

Children

None.

browseFileButton

`<browseFileButton>` represents a button that invokes a **Browse File** dialog box and inserts the resulting full path into an associated text-valued property.

Attributes

The attributes for this element are described below:

name	Unique ID for this control.
property	The internal name of the associated item property. Currently, this must be a text-valued property.
top	Top-most Y coordinate.
left	Left-most X coordinate.
width	Width of the control.
height	Height of the control.
caption	(optional) A static text string to be displayed in the button. If no caption is provided, then <code>Browse</code> is used.
tabindex	(optional) The tab order of this control in the dialog page.
accesskey	(optional) A character to be used as the keyboard accelerator for this button. For example, if <code>accesskey="x"</code> , then pressing <code>alt+x</code> will set focus to the button, and invoke the dialog box. The <code>accesskey</code> character must appear in the caption of the button, otherwise, it is ignored. The character is drawn underlined.
tooltip	(optional) A static text string to be displayed as the tool tip mouse over help for this control. If no tooltip is specified, then no mouse over help is displayed.

Children

None.

browseFolderButton

`<browseFolderButton>` represents a button that invokes a **Browse Folder** dialog box and inserts the resulting full path into an associated text-valued property.

Attributes

The attributes for this element are described below:

name	Unique ID for this control.
property	The internal name of the associated item property. Currently, this must be a text-valued property.
top	Top-most Y coordinate.
left	Left-most X coordinate.
width	Width of the control.
height	Height of the control.
caption	(optional) A static text string to be displayed in the button. If no caption is provided, then <code>Browse</code> is used.
tabindex	(optional) The tab order of this control in the dialog page.
accesskey	(optional) A character to be used as the keyboard accelerator for this button. For example, if <code>accesskey="x"</code> , then pressing <code>alt+x</code> will set focus to the button, and invoke the dialog box. The <code>accesskey</code> character must appear in the caption of the button, otherwise, it is ignored. The character is drawn underlined.
tooltip	(optional) A static text string to be displayed as the tool tip mouse over help for this control. If no tooltip is specified, then no mouse over help is displayed.

Children

None.

checkbox

`<checkbox>` represents a checkbox in the properties dialogs.

Attributes

The attributes for this element are described below:

name	Unique ID for this control.
property	The internal name of the associated item property. Currently, this must be a text-valued property.
checked	The value of the property represented by the checked state.
unchecked	The value of the property represented by the unchecked state.
top	Top-most Y coordinate.
left	Left-most X coordinate.
width	Width of the control.

height	Height of the control.
caption	(optional) A static text string to be displayed in the button. If no caption is provided, then <code>Browse</code> is used.
text-align	(optional) Text alignment: <code>left</code> or <code>right</code> . By default, <code>left</code> alignment is assumed.
tabindex	(optional) The tab order of this control in the dialog page.
accesskey	(optional) A character to be used as the keyboard accelerator for this button. For example, if <code>accesskey="x"</code> , then pressing <code>alt+x</code> will set focus to the button, and invoke the dialog box. The <code>accesskey</code> character must appear in the caption of the button, otherwise, it is ignored. The character is drawn underlined.
tooltip	(optional) A static text string to be displayed as the tool tip mouse over help for this control. If no tooltip is specified, then no mouse over help is displayed.

Children

None.

controlGroup

`<controlGroup>` represents a control containing a collection of child controls. Control groups can specify hints about layout of child controls within the group (default horizontal and vertical alignment), used when the client rendering is not precise.

The collection of child controls contained within this control group is represented using sub-elements. The coordinate system of child controls is assumed to be relative to the client area of the parent control group.

Attributes

The attributes for this element are described below:

name	Unique ID for this control.
top	Top-most Y coordinate.
left	Left-most X coordinate.
width	Width of the control.
height	Height of the control.
text-align	(optional) Text alignment: <code>left</code> or <code>right</code> . By default, <code>left</code> alignment is assumed.
h-align	(optional) Default horizontal alignment of child controls within the control group: <code>left</code> or <code>right</code> . Useful when the actual rendered size of a child control differs from the size specified in the layout. By default, <code>left</code> alignment is assumed.
v-align	(optional) Default vertical alignment of child controls within the control group: <code>top</code> , <code>middle</code> , or <code>bottom</code> . Useful when the actual rendered size of a child control differs from the size specified in the layout. By default, <code>top</code> alignment is assumed.
border	(optional) Border style: <code>none</code> , <code>solid</code> or <code>etched</code> . By default, <code>solid</code> is assumed.

Children

One or more control sub-elements.

dateTime

`<dateTime>` represents a date/time edit control.

Attributes

The attributes for this element are described below:

- name** Unique ID for this control.
- property** The internal name of the associated item property. Currently, this must be a text-valued property.
- top** Top-most Y coordinate.
- left** Left-most X coordinate.
- width** Width of the control.
- height** Height of the control.
- tabindex** (optional) The tab order of this control in the dialog page.
- tooltip** (optional) A static text string to be displayed as the tool tip mouse over help for this control. If no tooltip is specified, then no mouse over help is displayed.

Children

None.

droplist

`<droplist>` represents a drop-down list control.

Attributes

The attributes for this element are described below:

- name** Unique ID for this control.
- property** The internal name of the associated item property. Currently, this must be a text-valued property.
- top** Top-most Y coordinate.
- left** Left-most X coordinate.
- width** Width of the control.
- height** Height of the control.
- heightEx** Height of the control in its expanded (drop down) state.
- sort** (optional) Indicates whether or not the client should sort the values alphabetically by display name. Legal values are `yes` and `no`. By default, `no` is assumed. The values are listed in the order they are provided by the workflow engine.
- tabindex** (optional) The tab order of this control in the dialog page.
- tooltip** (optional) A static text string to be displayed as the tool tip mouse over help for this control. If no tooltip is specified, then no mouse over help is displayed.

Children

None.

edit

`<edit>` represents an edit control.

Attributes

The attributes for this element are described below:

- name** Unique ID for this control.
- property** The internal name of the associated item property. Currently, this must be a text-valued property.
- top** Top-most Y coordinate.
- left** Left-most X coordinate.
- width** Width of the control.
- height** Height of the control.
- multi-line** (optional) Supports multiple lines: `yes` or `no`. By default, a single line is assumed.
- text-align** (optional) Text alignment: `left` or `right`. By default, `left` alignment is assumed.
- tabindex** (optional) The tab order of this control in the dialog page.
- tooltip** (optional) A static text string to be displayed as the tool tip mouse over help for this control. If no tooltip is specified, then no mouse over help is displayed.

Children

None.

eolSettings

`<eolSettings>` represents a custom control used to display controls for the EOL conversion section of the **Files** tab of the **Folder Properties** dialog box.

The bounding box information for this custom control represents the entire area allocated for the various control components required. The client application is responsible for laying out individual components within the bounding box as it sees fit. Any associated `<label>` or `<controlGroup>` is not included and must be specified separately.

Individual controls within this custom control may have their own tab order, access keys, and tool tips. This is currently part of the inherent implementation of the control and cannot be customized.

Attributes

The attributes for this element are described below:

- name** Unique ID for this control.
- top** Top-most Y coordinate.
- left** Left-most X coordinate.
- width** Width of the control.

- height** Height of the control.
- tabindex** (optional) The tab order of this control in the dialog page.
- tooltip** (optional) A static text string to be displayed as the tool tip mouse over help for this control. If no tooltip is specified, then no mouse over help is displayed.

Children

None.

form

`<form>` represents the layout of a single dialog box. There is always exactly one `<form>`, which is currently the only child of the `<propertyDialog>` element.

Attributes

The attributes for this element are described below:

- name** Unique ID for this control.
- width** Width of the control.
- height** Height of the control.
- caption** (optional) A static text string to be displayed in the button. If no caption is provided, then `Browse` is used.
- sizeable** (optional) Indicates whether or not the item is resizable: `yes` or `no`. By default, items are not resizable.
- tabindex** (optional) The tab order of this control in the dialog page.
- accesskey** (optional) A character to be used as the keyboard accelerator for this button. For example, if `accesskey="x"`, then pressing `alt+x` will set focus to the button, and invoke the dialog box. The `accesskey` character must appear in the caption of the button, otherwise, it is ignored. The character is drawn underlined.
- tooltip** (optional) A static text string to be displayed as the tool tip mouse over help for this control. If no tooltip is specified, then no mouse over help is displayed.

Children

Always contains exactly one `<propertySheet>`.

itemHistory

`<itemHistory>` represents a custom control used to display a history list. This control is currently not supported by Web Edition.

The bounding box information for this custom control represents the entire area allocated for the various control components required. The client application is responsible for laying out individual components within the bounding box as it sees fit. Any associated `<label>` or `<controlGroup>` is not included and must be specified separately.

Attributes

The attributes for this element are described below:

name	Unique ID for this control.
top	Top-most Y coordinate.
left	Left-most X coordinate.
width	Width of the control.
height	Height of the control.
tabindex	(optional) The tab order of this control in the dialog page.
tooltip	(optional) A static text string to be displayed as the tool tip mouse over help for this control. If no tooltip is specified, then no mouse over help is displayed.

Children

None.

itemLabels

`<itemLabels>` represents a custom control used to display a list of the labels associated with a given item. The `<itemLabels>` control is currently used only on the **Labels** tab of the **Folder Properties** dialog box. This control is currently not supported by Web Edition.

The bounding box information for this custom control represents the entire area allocated for the various control components required. The client application is responsible for laying out individual components within the bounding box as it sees fit. Any associated `<label>` or `<controlGroup>` is not included and must be specified separately.

Attributes

The attributes for this element are described below:

name	Unique ID for this control.
top	Top-most Y coordinate.
left	Left-most X coordinate.
width	Width of the control.
height	Height of the control.
tabindex	(optional) The tab order of this control in the dialog page.
tooltip	(optional) A static text string to be displayed as the tool tip mouse over help for this control. If no tooltip is specified, then no mouse over help is displayed.

Children

None.

itemLinks

`<itemLinks>` represents a custom control used to display the list of links associated with an item. The `<itemLinks>` control is currently used only on the **History** tab of the **Folder Properties** dialog box. This control is currently not supported by Web Edition.

The bounding box information for this custom control represents the entire area allocated for the various control components required. The client application is responsible for laying out individual components

within the bounding box as it sees fit. Any associated `<label>` or `<controlGroup>` is not included and must be specified separately.

Attributes

The attributes for this element are described below:

- name** Unique ID for this control.
- top** Top-most Y coordinate.
- left** Left-most X coordinate.
- width** Width of the control.
- height** Height of the control.
- tabindex** (optional) The tab order of this control in the dialog page.
- tooltip** (optional) A static text string to be displayed as the tool tip mouse over help for this control. If no tooltip is specified, then no mouse over help is displayed.

Children

None.

itemReferences

`<itemReferences>` represents a custom control used to display the list of references to an item. The `<itemReferences>` control is not currently used by any of the existing dialog boxes. It is included for completeness.

The bounding box information for this custom control represents the entire area allocated for the various control components required. The client application is responsible for laying out individual components within the bounding box as it sees fit. Any associated `<label>` or `<controlGroup>` is not included and must be specified separately.

Attributes

The attributes for this element are described below:

- name** Unique ID for this control.
- top** Top-most Y coordinate.
- left** Left-most X coordinate.
- width** Width of the control.
- height** Height of the control.
- tabindex** (optional) The tab order of this control in the dialog page.
- tooltip** (optional) A static text string to be displayed as the tool tip mouse over help for this control. If no tooltip is specified, then no mouse over help is displayed.

Children

None.

Label

`<label>` is similar to static text, but is always associated with another control. Currently, any control element may have an associated label, except for the following: `<label>`, `<checkbox>`, `<radio>`.

Attributes

The attributes for this element are described below:

name	Unique ID for this control.
control	The name (unique ID) of the control associated with this item. See description for a list of control types that may have an associated item.
position	Position of the item, relative to the associated control: <code>above</code> , <code>below</code> , <code>left</code> , or <code>right</code> . When resizing the form, the associated control is moved and resized according to the values of its <code>auto-move</code> and <code>auto-size</code> attributes, and then the item is repositioned relative to the new control size and position.
top	Top-most Y coordinate.
left	Left-most X coordinate.
width	Width of the control.
height	Height of the control.
text-align	(optional) Text alignment: <code>left</code> or <code>right</code> . By default, <code>left</code> alignment is assumed.
caption	(optional) A static text string to be displayed in the button. If no caption is provided, then <code>Browse</code> is used.
accesskey	(optional) A character to be used as the keyboard accelerator for this button. For example, if <code>accesskey="x"</code> , then pressing <code>alt+x</code> will set focus to the button, and invoke the dialog box. The <code>accesskey</code> character must appear in the caption of the button, otherwise, it is ignored. The character is drawn underlined.
tooltip	(optional) A static text string to be displayed as the tool tip mouse over help for this control. If no tooltip is specified, then no mouse over help is displayed.

Children

None.

listbox

`<listbox>` represents a list control.

Attributes

The attributes for this element are described below:

name	Unique ID for this control.
property	The internal name of the associated item property. Currently, this must be a text-valued property.
top	Top-most Y coordinate.

left	Left-most X coordinate.
width	Width of the control.
height	Height of the control.
sort	(optional) Indicates whether or not the client should sort the values alphabetically by display name. Legal values are <code>yes</code> and <code>no</code> . By default, <code>no</code> is assumed. The values are listed in the order they are provided by the workflow engine.
tabindex	(optional) The tab order of this control in the dialog page.
tooltip	(optional) A static text string to be displayed as the tool tip mouse over help for this control. If no tooltip is specified, then no mouse over help is displayed.

Children

None.

pathSettings

`<pathSettings>` represents a custom control used to display controls for the “File path convention” section of the **Files** tab of the **Folder Properties** dialog box.

The bounding box information for this custom control represents the entire area allocated for the various control components required. The client application is responsible for laying out individual components within the bounding box as it sees fit. Any associated `<label>` or `<controlGroup>` is not included and must be specified separately.

Attributes

The attributes for this element are described below:

name	Unique ID for this control.
top	Top-most Y coordinate.
left	Left-most X coordinate.
width	Width of the control.
height	Height of the control.
tabindex	(optional) The tab order of this control in the dialog page.
tooltip	(optional) A static text string to be displayed as the tool tip mouse over help for this control. If no tooltip is specified, then no mouse over help is displayed.

Children

None.

property

`<property>` represents a property to be included in a property list. Parent element must be a `<propertyList>`.

Attributes

The attributes for this element are described below:

name Unique ID for this control.

Children

None.

propertyDialog

`<propertyDialog>` represents the root element of the dialog layout.

Attributes

The attributes for this element are described below:

item-type The item type for which this layout is intended. For example, `File`, `ChangeRequest`, and so on.

version Version string. Currently `1.0`.

Children

Always contains exactly one `<form>`.

propertyList

`<propertyList>` represents a custom control used to display a list of properties. The dialog editor currently assumes that there is at most one instance of the `<propertyList>` control in the entire dialog. This control must be the only control on a tab.

The set of user-defined properties to be displayed is represented using `<property>` sub-elements. These usually correspond to user-defined properties, but this is not strictly required. Ordering of the child elements is significant.

The bounding box information for this custom control represents the entire area allocated for the various control components required. The client application is responsible for laying out individual components within the bounding box as it sees fit.

Individual controls within this custom control may have their own tab order, access keys, and tool tips. This is currently part of the inherent implementation of the control and cannot be customized.

Attributes

The attributes for this element are described below:

name Unique ID for this control.

top Top-most Y coordinate.

left Left-most X coordinate.

width Width of the control.

height Height of the control.

tabindex (optional) The tab order of this control in the dialog page.

tooltip (optional) A static text string to be displayed as the tool tip mouse over help for this control. If no tooltip is specified, then no mouse over help is displayed.

Children

Zero or more `<property>` elements. If no properties are specified explicitly, then all user-defined properties that are not explicitly specified somewhere within the dialog box are included by default. A property is considered included in the dialog even if it is specified on a page that is not visible.

propertyPage

`<propertyPage>` represents a property page within a property sheet. Always a child of the `<propertySheet>` element. The order of the property pages within the property sheet is significant.

Attributes

The attributes for this element are described below:

- name** Unique ID for this control.
- caption** (optional) A static text string to be displayed in the button. If no caption is provided, then `Browse` is used.
- width** Width of the control.
- height** Height of the control.
- tooltip** (optional) A static text string to be displayed as the tool tip mouse over help for this control. If no tooltip is specified, then no mouse over help is displayed.

Children

Zero or more control sub-elements.

propertySheet

`<propertySheet>` represents a property sheet. Currently, there is exactly one `<propertySheet>` per dialog, and it is the only child of the `<form>` element.

Attributes

The attributes for this element are described below:

- name** Unique ID for this control.
- property** The internal name of the associated item property. Currently, this must be a text-valued property.
- top** Top-most Y coordinate.
- left** Left-most X coordinate.
- width** Width of the control.
- height** Height of the control.
- position** Position of the item, relative to the associated control: `above`, `below`, `left`, or `right`. When resizing the form, the associated control is moved and resized according to the values of its `auto-move` and `auto-size` attributes, and then the item is repositioned relative to the new control size and position.

Children

Contains one or more `<propertyPage>` elements.

radio

`<radio>` represents a radio button. The parent element must be a `<radioset>`. Although each individual radio button specifies a precise position relative to the coordinate system of the parent `<radioset>`, in practice the buttons are aligned in rows and/or columns by the dialog editor.

Attributes

The attributes for this element are described below:

name	Unique ID for this control.
value	The property value represented by this radio button. (The property name is given as an attribute of the parent <code><radioset></code> element.)
top	Top-most Y coordinate.
left	Left-most X coordinate.
width	Width of the control.
height	Height of the control.
caption	(optional) A static text string to be displayed in the button. If no caption is provided, then <code>Browse</code> is used.
accesskey	(optional) A character to be used as the keyboard accelerator for this button. For example, if <code>accesskey="x"</code> , then pressing <code>alt+x</code> will set focus to the button, and invoke the dialog box. The <code>accesskey</code> character must appear in the caption of the button, otherwise, it is ignored. The character is drawn underlined.
tooltip	(optional) A static text string to be displayed as the tool tip mouse over help for this control. If no tooltip is specified, then no mouse over help is displayed.

Children

None.

radioset

`<radioset>` represents a set of radio buttons.

Individual buttons are represented by `<radio>` child elements. The coordinate system of child radio buttons is assumed to be relative to the client area of the parent `<radioset>`.

Attributes

The attributes for this element are described below:

name	Unique ID for this control.
property	The internal name of the associated item property. Currently, this must be a text-valued property.
top	Top-most Y coordinate.
left	Left-most X coordinate.
width	Width of the control.

- height** Height of the control.
- text-align** (optional) Text alignment: `left` or `right`. By default, `left` alignment is assumed.
- rows** (optional) The individual radio buttons were positioned into rows and columns by the dialog editor, and this is the number of rows. If `rows` is not specified, then it can be determined from columns and the total number of child `<radio>` buttons. If neither `rows` nor `columns` is specified, then the layout of individual buttons within the `<radioset>` is unknown or arbitrary.
- columns** (optional) The individual radio buttons were positioned into rows and columns by the dialog editor, and this is the number of columns. If `columns` is not specified, it can be determined from rows and the total number of child `<radio>` buttons. If neither `rows` nor `columns` is specified, the layout of individual buttons within the `<radioset>` is unknown or arbitrary.
- h-align** (optional) Default horizontal alignment of child controls within the control group: `left` or `right`. Useful when the actual rendered size of a child control differs from the size specified in the layout. By default, `left` alignment is assumed.
- v-align** (optional) Default vertical alignment of child controls within the control group: `top`, `middle`, or `bottom`. Useful when the actual rendered size of a child control differs from the size specified in the layout. By default, `top` alignment is assumed.
- border** (optional) Border style: `none`, `solid` or `etched`. By default, `solid` is assumed.
- tabindex** (optional) The tab order of this control in the dialog page.

Children

Two or more `<radio>` elements.

runCommandButton

`<runCommandButton>` represents a button that attempts to execute the system command specified by a given text-valued property.

When the button is clicked, the value of the property is interpreted as a system command, and is executed.

If the value does not represent a valid system command for the current client platform, an error will occur. No attempt is made to validate the command before attempting to execute it.

If the value of the property is the empty string, the button should be disabled. If the client platform does not support execution of system commands, the button should be disabled.

Attributes

The attributes for this element are described below:

- name** Unique ID for this control.
- property** The internal name of the associated item property. Currently, this must be a text-valued property.
- top** Top-most Y coordinate.
- left** Left-most X coordinate.
- width** Width of the control.
- height** Height of the control.
- caption** (optional) A static text string to be displayed in the button. If no caption is provided, then `Browse` is used.

tabindex (optional) The tab order of this control in the dialog page.

tooltip (optional) A static text string to be displayed as the tool tip mouse over help for this control. If no tooltip is specified, then no mouse over help is displayed.

static

`<static>` represents a static text control.

Attributes

The attributes for this element are described below:

name Unique ID for this control.

property The internal name of the associated item property. Currently, this must be a text-valued property.

top Top-most Y coordinate.

left Left-most X coordinate.

width Width of the control.

height Height of the control.

caption (optional) A static text string to be displayed in the button. If no caption is provided, then `Browse` is used.

text-align (optional) Text alignment: `left` or `right`. By default, `left` alignment is assumed.

tooltip (optional) A static text string to be displayed as the tool tip mouse over help for this control. If no tooltip is specified, then no mouse over help is displayed.

Name	Description
<code>name</code>	Unique ID for this control.
<code>property</code>	The internal name of the associated item property. The caption and property elements are mutually exclusive.
<code>top</code>	Topmost Y coordinate.
<code>left</code>	Leftmost X coordinate.
<code>width</code>	Width of the control.
<code>height</code>	Height of the control.
<code>caption</code>	A static text string to be displayed in the control. The caption and property elements are mutually exclusive; one or the other, but not both, must be specified for any given static control.
<code>text-align</code>	(optional) Text alignment: <code>left</code> or <code>right</code> . By default, <code>left</code> alignment is assumed.
<code>tooltip</code>	(optional) A static text string to be displayed as the “tool tip” rollover help for this control. If no tooltip is spec

Children

None.

taskDependencies

The `<taskDependencies>` control represents a custom control used to display task dependencies for the **Task Properties** dialog box.

The bounding box information for this custom control represents the entire area allocated for the various control components required. The client application is responsible for laying out individual components within the bounding box as it sees fit. Any associated `<label>` or `<controlGroup>` is not included and must be specified separately.

Individual controls within this custom control may have their own tab order, access keys, and tool tips. This is currently part of the inherent implementation of the control and cannot be customized.

Attributes

The attributes for this element are described below:

name	Unique ID for this control.
top	Top-most Y coordinate.
left	Left-most X coordinate.
width	Width of the control.
height	Height of the control.
tabindex	(optional) The tab order of this control in the dialog page.
tooltip	(optional) A static text string to be displayed as the tool tip mouse over help for this control. If no tooltip is specified, then no mouse over help is displayed.

Children

None.

toBeReviewed

`<toBeReviewed>` represents a custom control used to display the file to be reviewed in the **Approval** tab of the **Task Properties** dialog.

The bounding box information for this custom control represents the entire area allocated for the various control components required. The client application is responsible for laying out individual components within the bounding box as it sees fit. Any associated `<label>` or `<controlGroup>` is not included and must be specified separately.

Individual controls within this custom control may have their own tab order, access keys, and tool tips. This is currently part of the inherent implementation of the control and cannot be customized.

Attributes

The attributes for this element are described below:

name	Unique ID for this control.
top	Top-most Y coordinate.
left	Left-most X coordinate.
width	Width of the control.

- height** Height of the control.
- tabindex** (optional) The tab order of this control in the dialog page.
- tooltip** (optional) A static text string to be displayed as the tool tip mouse over help for this control. If no tooltip is specified, then no mouse over help is displayed.

Children

None.

userList

The `<userList>` control represents a custom control used to display a list of users/groups and lets you edit the list when appropriate. This control must be the only control on a tab.

The bounding box information for this custom control represents the entire area allocated for the various control components required. The client application is responsible for laying out individual components within the bounding box as it sees fit. Any associated `<label>` or `<controlGroup>` is not included and must be specified separately.

Individual controls within this custom control may have their own tab order, access keys, and tool tips. This is currently part of the inherent implementation of the control and cannot be customized.

Attributes

The attributes for this element are described below:

- name** Unique ID for this control.
- property** The internal name of the associated item property. Currently, this must be a text-valued property.
- lengthProperty** The name of the associated item property whose value is the length of the corresponding `IDARRAY`. This must be an `INT32` property.
- top** Top-most Y coordinate.
- left** Left-most X coordinate.
- width** Width of the control.
- height** Height of the control.
- tabindex** (optional) The tab order of this control in the dialog page.
- tooltip** (optional) A static text string to be displayed as the tool tip mouse over help for this control. If no tooltip is specified, then no mouse over help is displayed.

Children

None.

workRecords

The `<workRecords>` element represents a custom control used to display work records for the **Task Properties** dialog box, and lets you edit them when appropriate.

The bounding box information for this custom control represents the entire area allocated for the various control components required. The client application is responsible for laying out individual components

within the bounding box as it sees fit. Any associated `<label>` or `<controlGroup>` is not included and must be specified separately.

Individual controls within this custom control may have their own tab order, access keys, and tool tips. This is currently part of the inherent implementation of the control and cannot be customized.

Attributes

The attributes for this element are described below:

- name** Unique ID for this control.
- top** Top-most Y coordinate.
- left** Left-most X coordinate.
- width** Width of the control.
- height** Height of the control.
- tabindex** (optional) The tab order of this control in the dialog page.
- tooltip** (optional) A static text string to be displayed as the tool tip mouse over help for this control. If no tooltip is specified, then no mouse over help is displayed.

Children

None.

Index

A

- approvalTasks 22
- attachments 22
- attributes
 - complex control 15
 - non-property control 14
 - property control 11

B

- browseFileButton 23
- browseFolderButton 24

C

- checkbox 24
- color 20
- complex control
 - attributes 15
- control
 - non-property 17
 - property 17
- controlGroup 25
- controls 9

D

- dateTime 26
- drawing controls 9
- droplist 26

E

- edit 27
- eolSettings 27

F

- form
 - create 8
 - design 6
 - import 8
 - open 8
 - properties 20
 - save 9

I

- itemHistory 28
- itemLabels 29
- itemLinks 29
- itemReferences 30

L

- label 31

- launch 8
- listbox 31

N

- non-property control
 - attributes 14

O

- overview 5

P

- pathSettings 32
- preparing a form for the StarTeam Cross-Platform Client 21
- product support 5
- property 32
- property control
 - attributes 11
- property types 10
- propertyDialog 33
- propertyList 33
- propertySheet 34

R

- radio 35
- radioset 35
- runCommandButton 36

S

- StarFlow Extensions 6
- static 37
- SupportLine 5

T

- tab order 19
- tabs 20
- taskDependencies 38
- toBeReviewed 38

U

- user interface 7
- userList 39

W

- workRecords 39

X

- XML Tags 22

