



## Tutorial 9: Sending Email Messages

---

### CONTENTS

Creating a project  
Identifying Your SMTP  
Email Server  
Creating the Email  
Message  
Setting Email Properties  
Deploying the process  
Testing the process

In this tutorial, you will learn how to send email notifications and updates from a BPEL process.

Prerequisites:

- Micro Focus Verastream Process Design Studio
- Micro Focus Verastream Process Server, installed and running
- Internet browser
- Some familiarity with XML Schema, WSDL, XPath, BPEL, and Web service standards

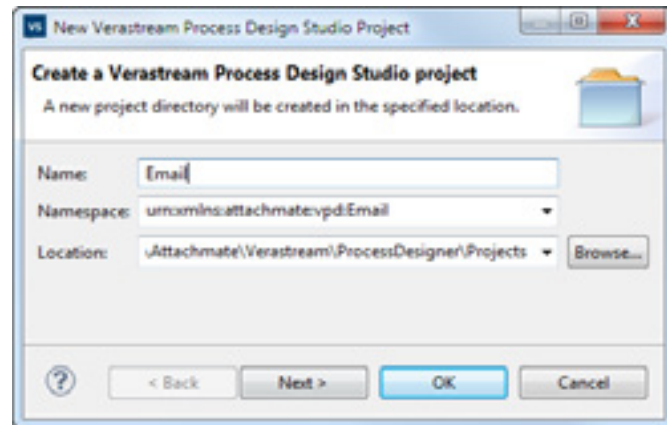
Let's get started.

## Creating the project

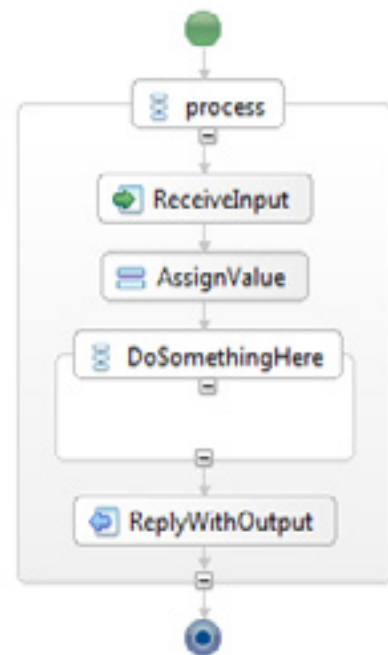
You've already created, deployed and run other processes. This simple email project will use those same skills.

To create the Email project:

1. From the File menu, select **New Project**.
2. Name the new project **Email**, then click **OK**.



3. Within the DoSomethingHere template drag the AssignValue activity outside the DoSomethingHere scope.



We want to leave the AssignValue as part of the process.

4. As you've done before, delete the DoSomethingHere template in the BPEL process diagram.

## Identifying Your SMTP Email Server

1. The first step is to identify your SMTP email server in the Process Server's email.properties file. Open Micro Focus/Verastream/ProcessServer/conf/email.properties.
2. In the email.properties file, enter the name and port of your SMTP server. The default port is 25. These properties are required. There are other properties that can be used for authentication.

```
#  
#Mon Jul 29 10:35:29 PDT 2013  
email.server=  
email.username=  
email.server.port=  
email.from=  
email.recipient=  
email.password=
```

3. Save the file. Return to the Design Studio and your email project.

*To support email notifications, you must identify your SMTP email server in the Process Server email.properties file. This information is available from your system administrator.*

*The email.properties file is created the first time you install Process Designer.*

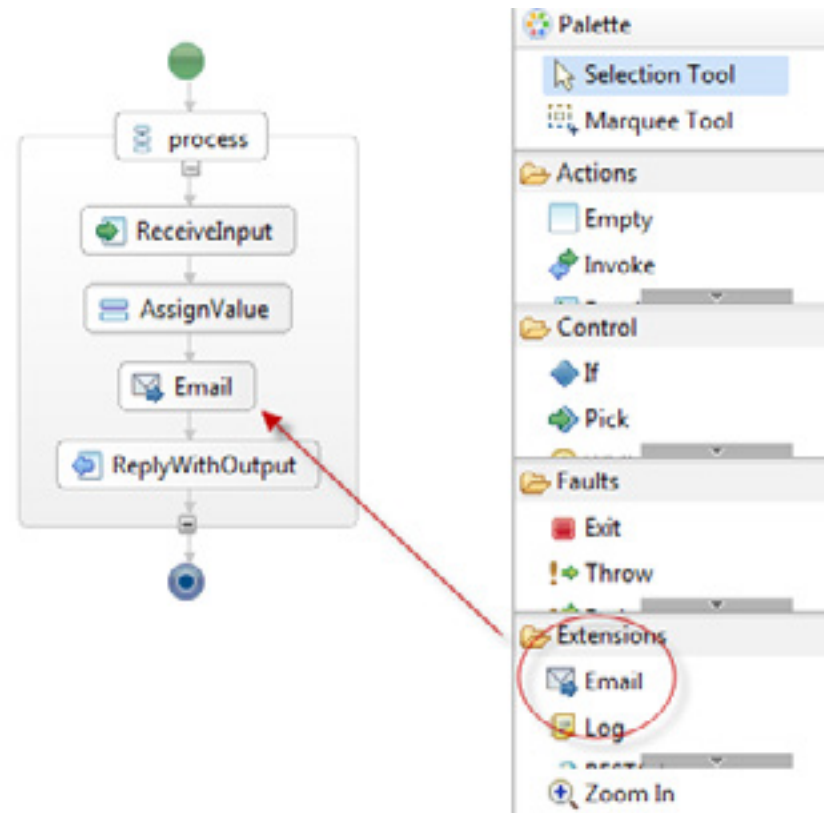
*Email properties set in the properties panel of the Design Studio override properties set in the email.properties file, with the exception of the SMTP server and other authentication properties.*

*Other properties, such as the Subject and Body of the email message are configured in the Properties panel of the Design Studio.*

## Creating the Email Message

Locate the **Email** activity in the Extensions section of the Palette.

1. Select it using your mouse. When you click on the activity the cursor becomes a selection tool.
2. In the BPEL graphical editor, click between ReceiveInput and the ReplyWithOutput to add the Email activity.



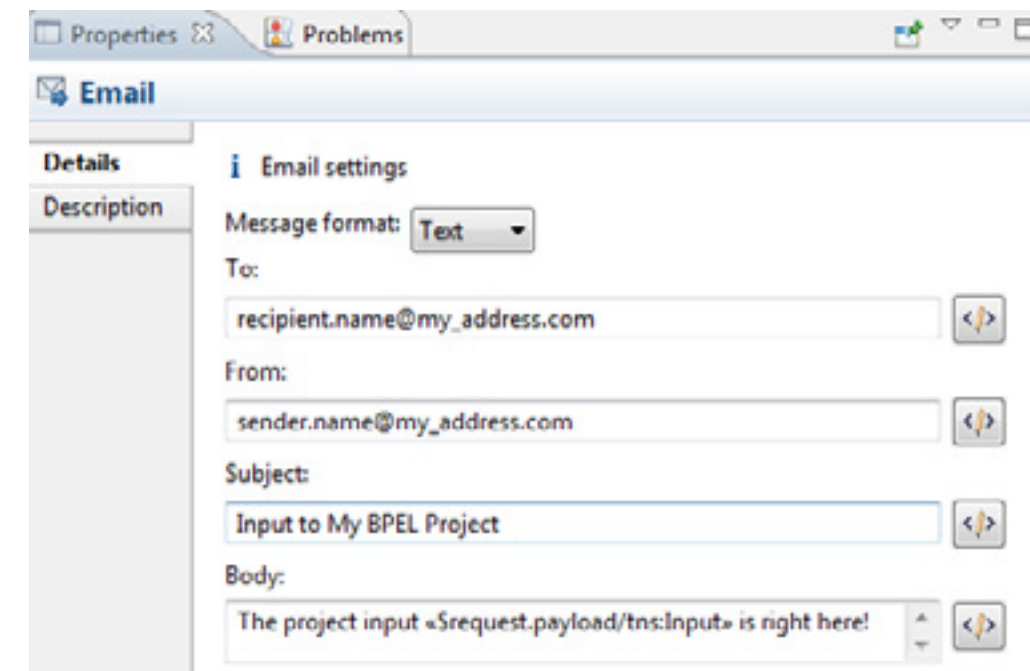
3. Select the Email activity in the BPEL graphical editor.
4. On the Description tab of the Properties view, replace Email with whatever name you want to use. (This tutorial will continue to refer to it as simply **Email**.)
5. Return to the Details tab of the Properties view.

## Setting Email Properties

1. With the Email activity selected, open the Properties panel, and then open the **Details** tab.
2. Enter the email addresses in the To and From fields. In this tutorial we used **recipient.name@my\_address.com** and **sender.name@my\_address.com**.
3. Enter the subject of the email in the Subject field.
4. In the Body field, enter the email message you want to show up. To insert the input in the message, click the icon to open the Expression Editor.

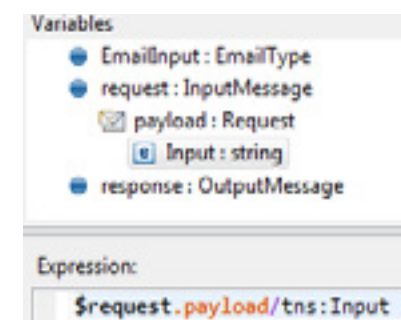
*It is possible to enter multiple email addresses. Separate each one with a comma.*

*Any value set on one of these properties overrides the value set previously.*



5. In the Expression Editor, in the Variables panel, open the request:InputMessage and double-click payload:Request:string. This inserts the input payload into the body of your email message.

*These properties can be set globally in the email.properties file in the Process Server*



*The Expression Editor, when dismissed, will place the expression either at the location of the cursor or replace selected text.*

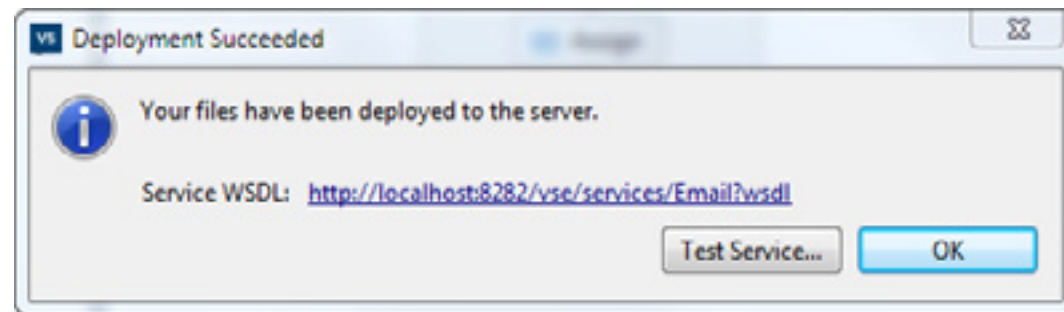
## Deploying the process

Your project is complete. The next step is to deploy the project to the Process Server and test it. These steps are the same steps you walked through in the first Hello World tutorial.

To deploy the BPEL project to the process server:

1. From the File menu, select **Deploy to Process Server....**
2. Enter the name, username and password for the server. The defaults are:  
name: **localhost**    username: **admin**    password: **secret**

*Always make note of the URL to the deployed project. This is how you access your BPEL process.*



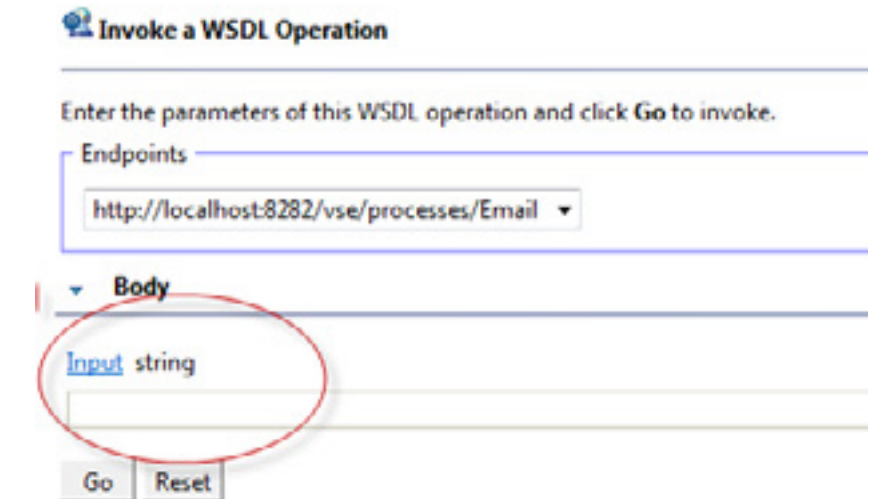
3. Click **Test Service** to open the Web Services Explorer in your default Web browser.

## Testing the process

*Remember to select SOAP11BINDING from the left panel of the Web Services Explorer before entering an input to your email message.*

To test your deployment from inside the Process Design Studio:

1. The Web Services Explorer is a tool that you can use to test your process.
2. Enter something in the field below the string. This is the input to your email message.
3. Click **Go**. The process response displays in the Status field.



4. To verify the process check the email address you entered as the recipient for the correct email message.