

Business Rule Manager

Business Rule Manager enables IT teams to discover hidden business logic that drives application behavior. By capturing these business rules, analysts and managers can ensure these systems operate as expected or as governed by regulation or industry. Development teams can also extend the value of proven business rules by reusing them within a web or services-driven architecture.

Business Challenge

The applications that run your business have been substantially customized to support your unique requirements. This specialized 'business logic' controls the behavior of your organization and sets you apart from your competitors. So these rules embedded in your applications are critical business assets that must be understood, managed and reused.

The challenge, however, is that business rules are often buried across millions of lines of code. No current documentation exists to help you understand these systems. On top of this, the rules themselves are frequently modified and duplicated as change requests come in. This leads to:

- **Inability to adapt:** When business users want to adapt processes or add new offerings they need to change the logic of applications, but limited insight into your business rules hinders this change.
- **Poor governance:** Internal audits and government regulations demand that you have control over the behavior of your company, which requires you to understand your business rules.
- **Need to modernize:** Your business logic is a valuable asset that has been refined to support your corporate strategies. You should ensure that this logic can be reused where possible and extended to support a flexible API-driven or service-oriented approach.

Product Overview

Business Rule Manager accelerates the discovery, documentation, and organization of business rules hidden deep within enterprise applications. Unlike lightweight business rule scanning technologies, Business Rule Manager offers patented automatic and analyst-centric paths to locate logic.

Once discovered, the module provides a variety of documentation capabilities for users to associate business-centric intelligence with rules. The collected information is stored in an XML standards-based repository, ensuring that the collected data can be readily accessed and repurposed.

Business Rule Manager is a module within the market-leading Enterprise Analyzer platform.

Key Benefits

Business Rule Manager enables organizations to regain control over how their application portfolio behaves. Key advantages for IT organizations include:

- **Regain management control:** Insight into business rules ensures that managers have control over operational behavior and can prove regulatory compliance. This also improves change request development and eases communication between business and technical users, cutting turnaround and rework.
- **Accelerate development activities:** Development team members can quickly

"Micro Focus® is an established player and has conducted many successful modernization projects. We couldn't afford to lose nearly 40 years of business intelligence and really wanted to reuse as much of the COBOL code as we could. We feel we have future-proofed SBA's core business systems with the full support of Micro Focus."

KEN M'BALE

Chief Technology Officer
Select Computing




understand where and how to make required changes to their applications to respond to business needs. This knowledge means that change requests can be executed faster, cutting up to 45% of the time required to complete a business requirement.

- **Encourage reuse:** Business logic is frequently shared by multiple processes. So, it is important that best-in-class logic is reused where possible. By uncovering and reusing existing rules, teams can respond more quickly and have less code to maintain going forward.
- **Enable modernization projects:** By uncovering and organizing existing business rules, you can ensure that your modernized applications retain the business logic that you depend on. This avoids disruptions to day-to-day operations and preserves what makes your business unique.
- **Accelerate implementation of microservices and other modern architectures:** You can create significant value by extending business processes to connect with other systems. For instance, you may wish to make order management available to partners. By locating business logic in your system, you can more readily join its inputs and outputs to external applications.

- Business context views enable users to focus rule searches on a particular process, geography, or other user defined filter, targeting the scope of analysis.
- Query-based rule discovery techniques locate logic within code 50% faster than alternatives.
- Powerful analytics enable users to manually navigate their code to quickly uncover business rules.
- Document and organize application logic, providing concise insight for business and development users.
- Workflow enables subject matter experts to validate the quality of discovered rules.

Contact us at:
www.microfocus.com

Like what you read? Share it.

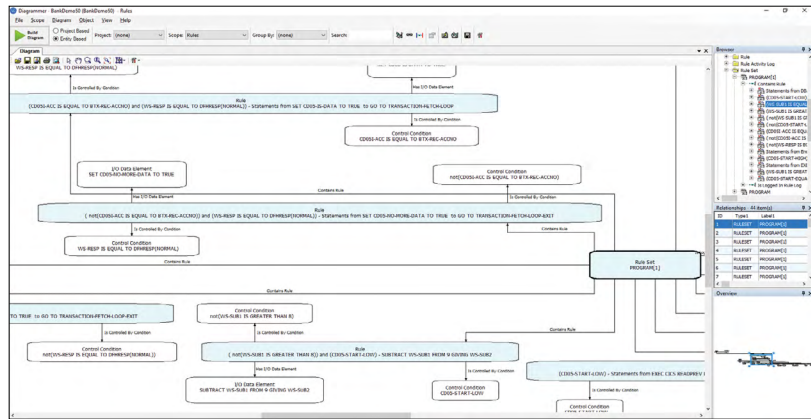


Figure 2. Create diagrams to visualize business rules, control conditions and IO.

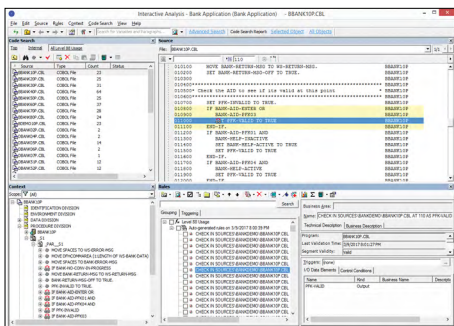


Figure 1. Identifying and capturing business rules

Feature Overview

- Automatic creation of business rule templates that covers the entire program code. This allows a quick ramp up of business rule extraction initiatives.
- Accelerate the discovery of business rules by up to 50% versus manual approaches.

- Documentation fields enable analysts to describe the function of business logic, ensuring knowledge capture and transfer between teams.
- Organization tools enable analysts to construct chains of rules and to arrange them based on useful hierarchies, further enhancing knowledge transfer.
- An integrated glossary connects technical terms, for instance on variable names, with business terms. This makes query results and business rules more meaningful to analysts and managers and enhances cross functional communication.
- Reuse application logic to extend the value of these critical business assets.
- An enterprise-class repository enables large development teams to access and enrich one 'source of truth' about business rules in the application portfolio, improving collaboration and communication across global teams.

- Business rules can be exported from the XML-based repository for integration into business rules engines and requirements management tools, ensuring that logic can be preserved and reused.
- Changes in the application are synchronized with associated rules so that the linkage between logic and its underlying source code is kept current.

System Requirements

- To enable Business Rule Manager, Enterprise Analyzer Analyst Client is required as a pre-requisite.
- Please see the Enterprise Analyzer Data Sheet on www.microfocus.com or contact Micro Focus for further details.