

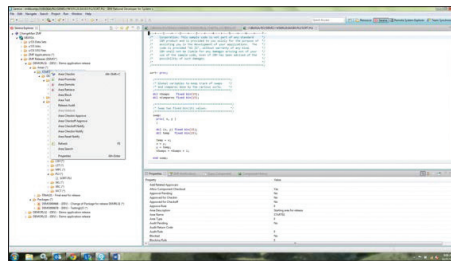
ChangeMan ZMF: Enterprise Release Option (ERO)

The increasing complexity of IT environments has placed new demands on Enterprise Software Change Management (SCM) systems, as software change must now be managed across geographies, multiple concurrent releases, technologies, methodologies, and platforms. Consistency yields efficiency, yet very few organizations have established consistent SCM processes in each of their disparate computing environments, and fewer still have achieved an integrated enterprise infrastructure that gives developers, managers, quality assurance teams, and auditors the flexibility and control they need.

Product Highlights

Micro Focus gives organizations an advantage with the most thoroughly integrated multi-platform SCM solutions available. Furthermore, Micro Focus has developed the Enterprise Release Option (ERO) for Micro Focus® ZMF to extend its software change management solution to support organizations with multiple releases in motion simultaneously. For release-centric organizations, ERO represents a quantum leap in automation, productivity, auditability, and quality assurance.

The ERO Option for ChangeMan ZMF simplifies complexity in release-centric environments and delivers dramatic productivity improvements. It automates communication and equips release managers with tools for monitoring activity and component movement. For IT organizations driven by strategic objectives that result in several releases being active simultaneously, ERO aligns development practices with business objectives.



ERO is an elegant solution for release-centric development environments that simplifies the process of supporting multiple release versions. ERO is an optional module that extends Micro Focus ChangeMan ZMF to streamline the release management process, and supports many packages from many applications in a series of dynamic and dependent releases, complete with audit capability. ERO allows all changes in multiple packages, and across multiple applications, to be managed at the enterprise level. ERO supports both traditional and modern application development environments by providing support for ISPF, Windows, and Eclipse clients.

ChangeMan ZMF Options

- Dump Analyzer (DA)
- DB2
- Enterprise Release Option (ERO)
- IMS
- InfoMan
- Load balancer Options (LBO)
- Merge and Reconcile (M+R)
- ZMF Client Pack

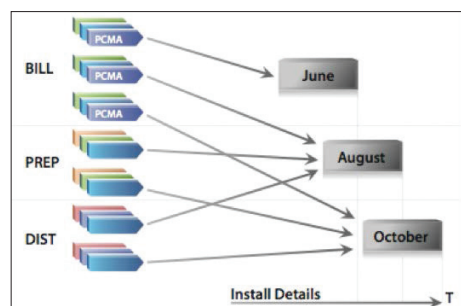


Micro Focus
UK Headquarters
United Kingdom
+44 (0) 1635 565200

U.S. Headquarters
Rockville, Maryland
301 838 5000
877 772 4450

Additional contact information and office locations:
www.microfocus.com

In complex environments, releases may comprise hundreds of change packages. The same programs may be changed in each release, and multiple releases might be simultaneous works in progress. A change anywhere in the release schedule can have an impact on a great number of releases or release management teams.



Automatically track dependencies. Having multiple releases in motion can create complex dependencies between components and releases, and this can lead to rework, regression, and lost productivity. ERO automatically tracks dependencies and opens communication between release teams.

ERO makes it possible to establish and automate a consistent release management process. Organizations can manage releases as they move from development, testing, and finally into production. ERO provides a development path in each release that progressively consolidates application package components into areas until they reside in a single set of area libraries.

Benefits

- Provides simple, consistent, and flexible release management
- Eliminates manual intervention
- Protects against overlays and minimizes rework
- Ensures that correct component version deploys into production every time
- Improves audit and compliance
- Simplifies maintenance and upgrades
- Automates communication between release management teams
- Integrates with client pack to provide support for Windows and Eclipse clients

Related Micro Focus Products

- Release Control
- Deployment Automation
- ChangeMan SSM
- Comparex
- Dimensions z/OS
- StarTool DA
- StartTool FDM
- StarTool IOO