

ValueEdge™ Strategy

Strategic planning in an Agile world has shifted from “doing things right” to “doing the right things.” ValueEdge™ Strategy helps you connect business strategy with Agile delivery to prioritize investments that maximize value delivered.

Product Highlights

Portfolio planning has changed given the rise of agile, it's more important than ever for organizations to quickly react and adapt to changes and opportunities. Limited resources, burgeoning demand, shortened deadlines and the rapid speed of technology advancements puts the focus on the role of strategic planning in prioritizing the right work for agile teams.

ValueEdge Strategy provides the features and tools necessary for business strategy to drive agile prioritization. It's a modern, lightweight strategic portfolio management tool that provides visibility and insights into the strategic alignment of investment and execution. Clear communication of the business organization and strategy can transform strategic alignment which helps eliminate silos, increase collaboration, and drive value-based investment prioritization.

Key Benefits

- Ready to use, out-of-the-box Strategic Portfolio Management (SPM)
- Visibility into all investments and ongoing execution
- Smarter investment resourcing
- Strategy driven agile prioritization
- Demand mapped to Strategy
- Understand strategic benefits and business capabilities for in-flight and proposed investments
- Stay in sync—from ideation to execution
- SAFe Lean Portfolio Management is implemented out-of-the-box

Key Features

Visibility and Insights

To successfully communicate business strategy and goals, you need to find the common

thread that unites agile and business teams to define how products contribute to your different business units. Once connections have been identified and the value streams have been mapped, creating the hierarchical portfolio structure in ValueEdge Strategy exposes the business architecture and clearly communicates strategy through nested portfolios and inherited strategic themes.

The nested portfolio structure in ValueEdge Strategy allows users to monitor portfolio performance from the highest level or drilled down into each portfolio to track and expose value streams and epics by value, risk, strategic themes, guardrails and more. Strategic Portfolio dashboards provide insight into the strategic alignment of contributing product portfolios and metrics being impacted like revenue, value, and investment forecast, while Product Portfolio dashboards expose epic data required to evaluate initiatives, track business

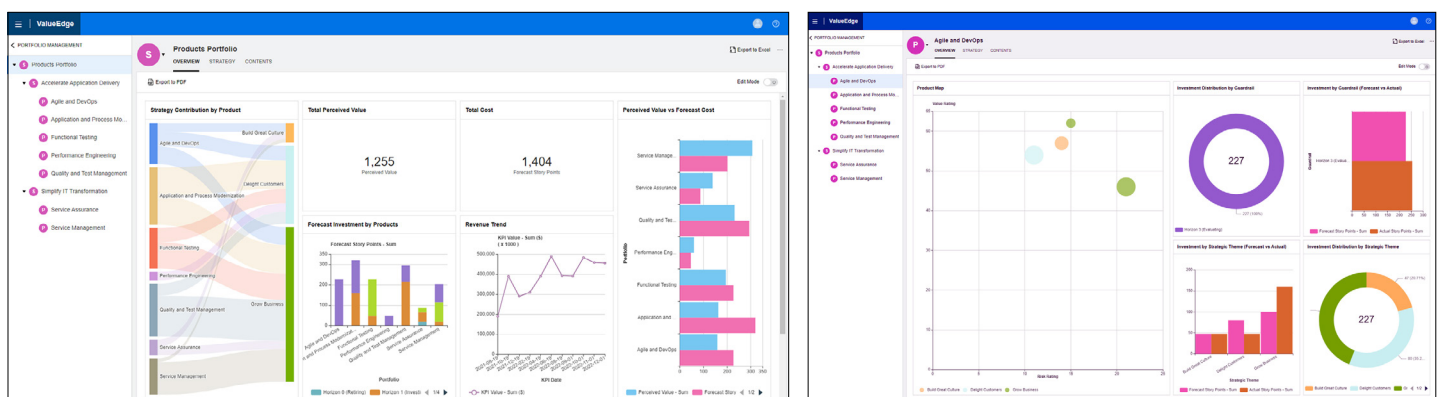


Figure 1. Gain valuable insights into Strategic Portfolios (left) and Product Portfolios (right) to prioritize initiatives that maximize business impact.

goals and KPIs, and prioritize agile team's work. Dashboards are customizable, users can add their own graphs and charts using any of the data points available in ValueEdge Strategy.

Strategic Alignment

STRATEGY VIEW AND MAP

To execute strategy driven agile prioritization, portfolio and product managers need to understand how their product and initiatives contribute to business success and impact business goals. The nested structure of the portfolios clearly communicates organizational structure and allows portfolios to inherit strategic

themes and business goals from parent portfolios. With the Strategy Map, users can visualize and track strategic alignment of all portfolios contributing to strategic themes and easily identify strategic themes that do not align with any business goals or KPIs in a portfolio. Users can monitor and track the progress and status of their portfolio's strategic themes and business goals, forecast KPI trends, and easily identify contributing initiatives. In depth insights into the portfolio's strategic alignment provides information needed to make strategy focused decisions that align with business objectives.

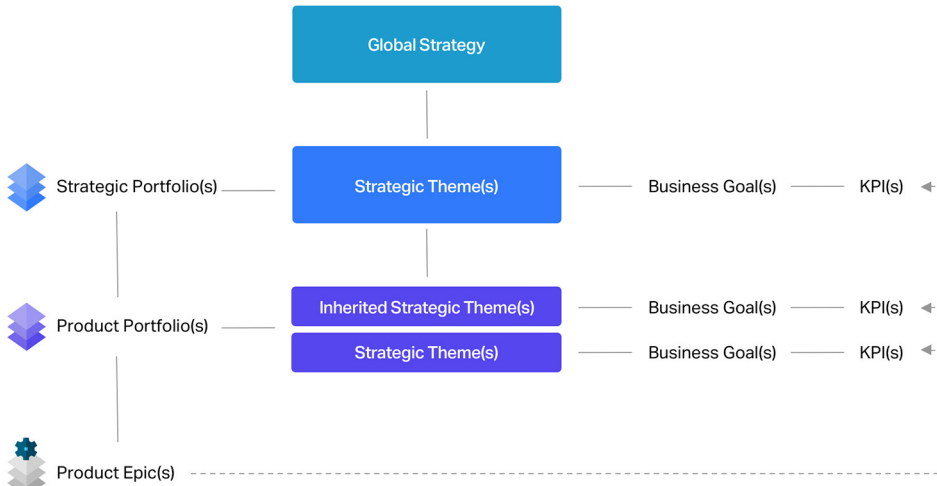


Figure 2. A look at how strategic and product portfolios, strategic themes, business goals and KPIs, and Epics are connected

Epic Management

EPIC VIEWS

Epics are where business meets Agile. Through epics we can see the strategic alignment of planned, approved, and executed initiatives, their associated risk and value, and their impact

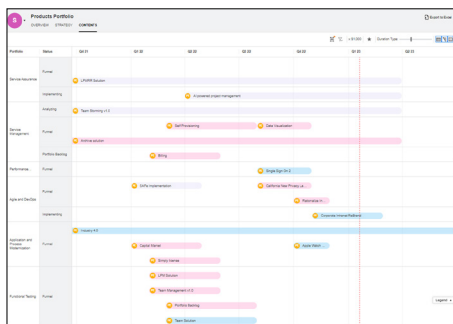


Figure 3. Roadmap view, one of four views available, used to review, compare, validate, and prioritize Epics in a portfolio



on KPIs and business goals. Select from one of the four different view options available to review all epics in the selected portfolio to monitor the status, progress, story points, and actual effort to better compare, validate, and prioritize initiatives or pivot to take advantage of new opportunities. The Product Map chart illustrates strategic theme, and estimated effort to help identify initiatives that could deliver the most value. Informed decision-making is key to strategic planning in an agile world. ValueEdge Strategy exposes epic data required to evaluate initiatives, track impact on business goals and KPIs, and prioritize agile team's work.

Ideate & Govern

EPIC DETAILS AND WORKFLOW

Epics are investment vehicles; they represent significant initiatives that capture the

Connect with Us
[OpenText CEO Mark Barrenechea's blog](#)

more substantial investments in a portfolio. Collecting and maintaining impactful and important information through planning and execution is crucial. ValueEdge Strategy's out-of-the-box SAFe approved framework includes templates, forms, guardrails, and workflows ensuring data continuity and investment alignment from ideation through planning and execution. The epic form and template include weighted fields and values used in compare/contrast calculations that help portfolio managers prioritize the perceived value and risk associated with epics. The workflow ensures consistent approvals through planning and execution, seamlessly passing epics on to Agile teams for execution. Providing valuable information back to the top line of the business is an integral part of SPM, ValueEdge Strategy ensures data continuity and alignment from ideation and planning to execution and release.

ValueEdge Agile Integration

The seamless integration between ValueEdge Strategy and ValueEdge Agile provides the connection between portfolio planning and agile execution. The bidirectional flow of information ensures downstream agile data feeds back to strategy module. Backlog items are created in the Agile module from approval within the workflow and updates to an epic, like user stories, status, and effort map back to Strategy ensuring portfolio managers have up-to-date data to when analyzing and planning portfolio activities. ValueEdge Agile integrates with other DevOps tools used to manage agile projects.

Learn more at
www.microfocus.com/products/valueedge-strategy
www.microfocus.com/opentext