

# LoadRunner Developer

If you are looking to better align with Agile and DevOps methodologies, then starting performance testing earlier in the software development cycle is critical. LoadRunner Developer delivers shift-left performance testing embedded throughout the development lifecycle.

## Product Highlights

In the age of CI/CD pipelines, everyone is responsible for quality. This means anyone who can test should test. Your teams are required to shift-left performance testing and get the developers invested in performance engineering earlier. This will provide the early feedback you need to deliver applications faster, with less risk and higher quality. Your developers need the right tools, the ability to work on performance testing in their IDE, execute tests quickly, gain initial feedback, and add these assets to CI pipeline.

Providing the right tool for the job is where OpenText™ LoadRunner Developer can help. It's a modern, lightweight tool built for developers to shift-left performance testing. Script, model scenarios, run tests, and quickly analyze the results without leaving the familiar developer ecosystem, leveraging the seamless integration with any IDE and CI

tool. Natively run scripts and reuse assets in all OpenText™ LoadRunner family solutions for end-to-end testing, leveraging a connected ecosystem that delivers smarter insights and tighter team collaboration.

## Key Features

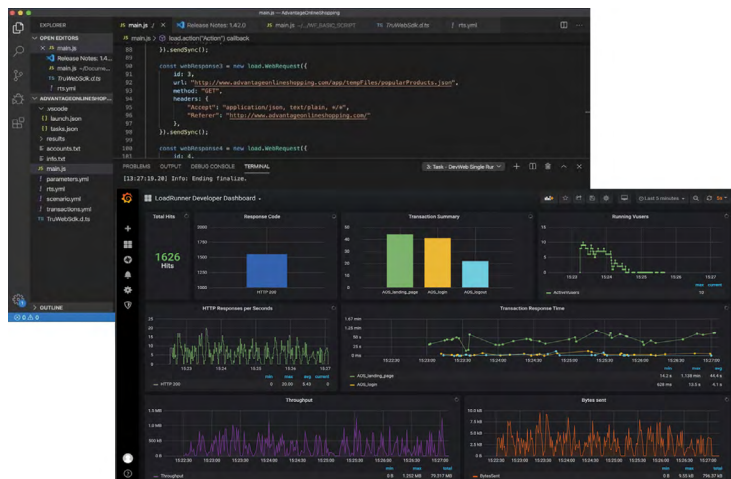
### Support for "Shift-Left"

No longer is application performance solely owned by QA; to be successful in the world of CI/CD, you need a solution that allows multiple personas to take part in the performance testing process earlier, especially one created for developers to embrace shift-left practices. To streamline shift-left adoption LoadRunner Developer was designed with a developer mindset. It enables software development teams to script in JavaScript, reuse existing code, automate execution and pass/fail decisions for CI use, making it part of developers' day-to-day tasks.

## Key Benefits

- Leverage developer friendly capabilities
- Seamlessly integrate with any IDE and CI tools
- Free local execution with up to 50 virtual users
- Foster collaboration between Center of Excellence (CoE) and developers
- Natively run scripts and reuse assets in all LoadRunner family solutions
- Scales directly from any IDE using LoadRunner Cloud and LoadRunner Enterprise

**Figure 1.** Script and execute load tests as part of a continuous testing process



## Seamless Integration

Developers want to stay in their preferred IDE for scripting and testing which not only increases their efficiency, but also allows performance testing to be incorporated more naturally into their software development lifecycle. Executing tests when they decide to and having the ability to execute immediately when they want to is critical. Regardless of IDE, platform and CI tools, LoadRunner Developer allows your developers to incorporate performance earlier in the development cycle, without leaving their IDE or having to learn additional tools.

LoadRunner Developer delivers this and more. It allows developers to keep using their own environments to create scripts and execute load tests within the existing ecosystem and it integrates with any IDE (IntelliJ, Visual Studio, Atom.io, Visual Studio Code, e.g.) or any CI (Jenkins, Bamboo, Azure DevOps, e.g.). Your developers can execute a test with rules applied, view the results and determine at which point the application failed to meet minimum performance levels. Your testing team can analyze the test results which can be provided as raw data with all measurements in an SQLite DB file format or stream the measurements to Influx DB and use Grafana to create your own dashboards based on that data. Additionally, LoadRunner Developer supports all the common operating systems (Windows, Linux and MacOS).

## Easy to Use

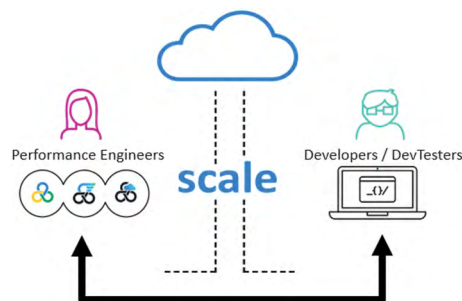
Adopting new tools can be challenging, but LoadRunner Developer has made it easy. It is simple to understand, easy to deploy and easy to use. Ideal for web and API testing, LoadRunner Developer provides an intuitive SDK in JavaScript which makes adoption and learning simple. There is no license required to use LoadRunner Developer and it offers the possibility to scale up to 50 Users leveraging local resources, supporting quick execution as you shift-left performance testing.

## Increased Collaboration

Collaboration is a key to the success of shift-left performance testing and overcoming obstacles inherent in the adoption of Agile and DevOps methodologies. To help evaluate the performance there is a common link, DevWeb. DevWeb is a lightweight and scalable LoadRunner protocol, and the engine behind

LoadRunner Developer. By using LoadRunner Developer, your developers can easily create assets using a scripting language they are familiar with and share these assets with your performance engineers who utilize DevWeb. Performance engineers can run an end-to-end test under different conditions and then share specific feedback regarding the identified issues or necessary improvements in the application under test (AUT) directly with the developer, who can then take the appropriate action. DevWeb and LoadRunner Developer allow performance engineers to reuse assets created by developers, thus not only saving time for performance engineers, but also bridging the gap between Performance Center of Excellence and Research and Development with seamless collaboration.

This collaborative shared approach can generate significant gains. This is the true benefit of using LoadRunner Developer in conjunction with the other LoadRunner solutions. Together with the LoadRunner family, LoadRunner Developer speeds up test executions by creating and sharing assets using the same technology. This helps your team understand how everything works together versus evaluating isolated results and it scales within your existing tools, saving you time with proficient testing.



**Figure 2. Built for Collaboration**

Create and execute tests using the same technology and share assets between teams

## Performance Engineering with the LoadRunner Family

High performing teams adopt a proactive, continuous performance engineering approach that includes four key attributes: expansion of performance testing to new roles, tight integration into the CI/CD process, end-to-end performance analysis, and continuous improvement. Combined these elements ensure that teams

Connect with Us



can engineer performance earlier and throughout the lifecycle.

The OpenText LoadRunner Family is an integrated set of enterprise-grade performance engineering solutions that work independently or in a combined fashion. With any solution you can confidently test complex load, stress, and performance scenarios across legacy, website, and mobile applications—while benefitting from shared capabilities and common technology. Ensuring that tools are right sized for the different users while exploiting test reuse and managing or delivering shared infrastructure helps you develop a performance engineering ecosystem for success. The LoadRunner family includes:

- **LoadRunner Developer**—shift-left performance testing embedded throughout the development lifecycle
- **OpenText™ LoadRunner Professional**—versatile and comprehensive performance testing for co-located teams
- **OpenText™ LoadRunner Enterprise**—collaborative performance testing platform for globally distributed teams
- **OpenText™ LoadRunner Cloud**—cloud-based performance testing for extreme scale and flexibility

## Learn More

Learn more about LoadRunner Developer and the LoadRunner family at [microfocus.com/performance-engineering](https://microfocus.com/performance-engineering).

[www.opentext.com](https://www.opentext.com)